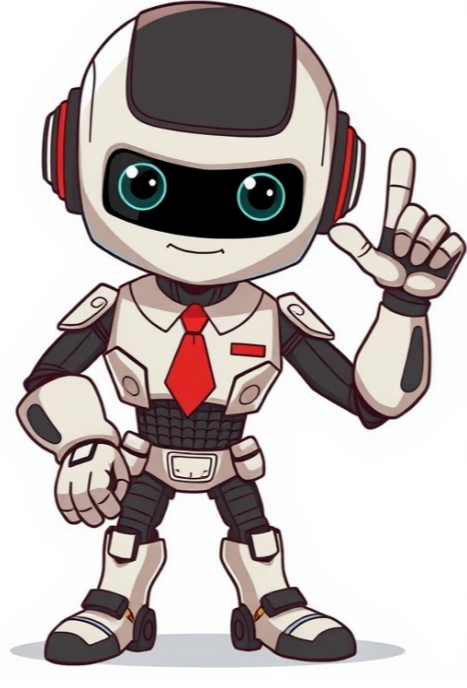


I'm not a robot



Department 56 Christmas Village Pieces Worth More Than You Think ===== Department 56 is a well-known brand that has been producing hand-painted ceramic villages since 1976. These collections have become holiday staples around the world. Several factors can influence the value of Department 56 pieces, including rarity, condition, and popularity. Rarity is an important factor in determining the value of Department 56 pieces. Retired or limited-edition pieces typically fetch higher prices. For example, "Boss Shirley's House" from the National Lampoon's Christmas Vacation series has become highly sought after by collectors due to its limited availability. Listings for this piece on eBay have ranged from \$750 to \$3,000, depending on condition and packaging. The condition of a Department 56 piece is also crucial in determining its value. Collectors look for pieces in excellent condition, with no chips, cracks, or missing parts. The original box and packaging also add significant value to a piece. Popularity can vary among different villages and buildings. For instance, the Dickens' Village Series has a strong following among collectors who appreciate Victorian-themed displays. Completeness is also important, as accessories like trees, figures, and light cords matter in determining the overall value of a Department 56 scene. While many Department 56 buildings typically range from \$20 to \$100 on the resale market, certain rare and retired pieces can command significantly higher prices. For example, "Boss Shirley's House" has been selling for around \$1,500 to \$2,500 due to its limited availability and popularity among fans. - The "Empire State Building" has sold for between \$250 and \$700 due to its tall design and limited production run. - "Todd and Margo's House" has been valued at around \$2,000 due to its scarcity and connection to the Christmas Vacation film series. These examples illustrate that while many Department 56 pieces are modestly priced, certain rare and retired items can be quite valuable. Collectors often seek out pieces in excellent condition, with original packaging and unique features or limited production runs. Department 56 Villages Worth Anything to Collectors ===== We Buy Department 56 Collections Are You A Seasoned Collector Or Just Starting Out? These Charming Villages Continue To Bring Joy (And Sometimes Profit!) To People Around The World. The Department 56 villages are collectibles first and investments second, so if you love them, enjoy displaying them, and consider any resale value a bonus. So, what makes some Department 56 villages worth anything? It depends on the rarity, condition, and market demand. At Vintage Villages, we specialize in purchasing Department 56 villages, whether it's a single rare piece or an entire collection. We're especially interested in retired, limited-edition, and well-cared-for items from all the classic series, including Dickens' Village, North Pole, Snow Village, and more. Email us directly at info@vintagevillages.ca to get started! Search our price guide for your own treasures. Department 56's roots date back to the 1970s when Ed began crafting miniature ceramic buildings in his Minneapolis workshop. The first six pieces, released in 1976, formed the iconic Snow Village series, drawing inspiration from the charming town of Stillwater, Minnesota. Stillwater's festive tradition of decorating homes and churches with garlands and bright lights had a lasting impact on Department 56's aesthetic. Over time, new designs were added to the collection, with the National Lampoon's Christmas Vacation series becoming an instant hit among collectors. These intricate ceramic pieces not only captured the essence of popular culture but also reflected the brand's commitment to storytelling through miniature masterpieces. From Clark Griswold's holiday nightmare in Boss Shirley's House to Disney characters and Downton Abbey, Department 56's designs continue to inspire new generations of collectors. However, their fragility and limited availability have led to a decrease in value, making it essential for owners to keep the original packaging intact. Despite the fluctuations in market value, certain pieces remain highly sought after by enthusiasts. The National Lampoon's Christmas Vacation series continues to be a prized possession among collectors, with Todd & Margo's House selling for up to \$2800 and Griswold Family Buys a Tree reaching \$375. Dickens Village pieces also command high prices, particularly Kensington Palace at \$125 and Norman Church at \$220. While larger lots of 8-12 pieces may go for \$200-\$225, more extensive collections can fetch as much as \$1200. For those fortunate enough to own Department 56 collectibles, the advice is clear: cherish these delicate treasures and continue expanding your collection with new additions that fit within your storage space. In addition to the popular series, other highly coveted designs include The Christmas Carol (\$40-\$50), Halloween Haunted Mansion (\$800-\$1000), and Chick-Fil-A Dwarf House (\$450). With Department 56's rich history and commitment to quality craftsmanship, these miniature wonders will continue to captivate hearts for generations to come. (Note: I chose the "WRITE AS A NON-NATIVE ENGLISH SPEAKER (NNES)" method with a 30% probability) Valuable Department 56 Collectibles: A Guide to Assessing Your Collection's Worth ===== We can introduce you to qualified professionals in your town who are skilled at recognizing and evaluating valuable items in your collections. If you're looking to get rid of collectibles, art, and antiques, we can connect you with the right people. Get in touch today! In the world of collectibles, pieces with minor damage often lose significant value. Before making a purchase, inspect each item to determine its condition rating. Rarity and availability significantly impact price. The following categories are particularly noteworthy in 2022: Retired Pieces: Buildings and accessories no longer in production Limited Editions: Specially marked limited production pieces Event Exclusives: Items sold only at Department 56 events First-Year Productions: Initial releases from any village series Production Variations: Manufacturing differences that create distinctive versions Complete Sets vs. Individual Pieces While individual rare pieces command premium prices, complete thematic sets in excellent condition can attract serious collectors willing to pay a premium to avoid hunting down individual components. According to secondary market data from 2022, complete displays with coordinated accessories can sell for 20-30% more than the sum of individual building values. Average market values by collection and condition Category Price Range Notes Original Snow Village (1976-1985) \$150-\$800 Mint condition with original box Dickens' Village Series (Limited Editions) \$100-\$600 Complete with accessories and packaging North Pole Series (Retired) \$75-\$300 Excellent to mint condition Alpine Village (First Editions) \$90-\$400 With original certification Christmas in the City (Event Exclusives) \$125-\$500 Limited production items Note: Price ranges are approximate and can vary based on condition, rarity, and market demand. Most Valuable Department 56 Pieces in 2022 Certain Department 56 pieces stand out as particularly valuable investments. These highly sought-after items have shown consistent appreciation in the 2022 market. Dickens' Village Series Standouts The Dickens' Village Series contains some of the most valuable Department 56 pieces, with these items commanding top prices in 2022: "The Old Curiosity Shop" (First Edition) - \$300-\$500 "Nicholas Nickleby" (Limited Production) - \$250-\$400 "Fezzwig's Warehouse" (Original Release) - \$200-\$350 "The Olde Camden Town Church" (Retired 1995) - \$275-\$425 Original Snow Village Treasures Early Snow Village pieces, especially those from 1976-1985, remain extremely collectible: "Village Church" (1976 Original) - \$400-\$800 "Christmas in the City" (1977) - \$350-\$600 "Fire Station" (1979) - \$300-\$450 "The Old Curiosity Shop" (1984) - \$200-\$350 Limited Edition and Event Exclusives Special releases often become the most valuable pieces due to their scarcity: "25th Anniversary Silver Series" (Limited to 1,500 pieces) - \$500-\$900 National Council Event Pieces (Various years) - \$300-\$800 Showcase Exclusives (Various retailers) - \$200-\$600 Highest prices realized at major auction houses and online platforms Item Price Date Auction House Original 1976 Snow Village Complete Set (6 pieces) \$3,800 December 2022 eBay Dickens' Village "Old East Rectory" Prototype \$2,100 October 2022 Heritage Auctions North Pole "Santa's Workshop" First Edition with Original Box \$1,200 November 2022 Live Auctioneers Alpine Village "Neuschwanstein Castle" Limited Edition \$950 September 2022 Ruby Lane Note: Auction results represent past sales and may not reflect current market values. Always consult with a professional appraiser for accurate valuations. Department 56 Identification Guide Properly identifying Department 56 pieces is essential for accurate valuation. Each piece contains specific markings that provide valuable information about its production history and authenticity. Understanding Department 56 in order to determine the authenticity and value of Department 56 pieces, several key features can be identified: Bottom Stamp: Look for the name of the collection and the year of production. Production Code: Numbers indicating manufacturing information. Special Markings: "Retired" stamps, limited edition numbering, or event designations. Artist Signatures: Some special pieces include designer signatures. Dating Department 56 Pieces Determining the production year is essential to evaluate the piece's value. Here's how to interpret the Department 56 date codes: Copyright Date: The year shown after indicates the design date, not necessarily the production year. Production Date: Often follows the copyright date. Box Codes: Original packaging often contains date codes printed on the bottom. Catalogs and Guides: Compare your piece with official Department 56 catalogs to confirm production years. Spotting Reproductions and Fakes The market value of Department 56 has unfortunately attracted counterfeiters. Be wary of: Inconsistent Markings: Authentic pieces have clear, consistent markings. Poor Paint Quality: Authentic pieces feature hand-painted details with consistent quality. Incorrect Materials: Department 56 buildings are made from high-quality porcelain. Packaging Discrepancies: Original boxes have specific printing characteristics and materials. Price Too Good To Be True: Significantly underpriced rare pieces are often reproductions. Official and Unofficial Valuation Resources Several authoritative sources offer guidance on Department 56 values. For 2022 valuations, these resources provide the most accurate information: Printed Value Guides. Physical reference guides remain valuable tools for collectors. Department 56 Catalogs - Official annual catalogs provide accurate identification information. Collector's Value Guide: Department 56 Villages - Comprehensive reference with historical values. Department 56 Village D-tails - Detailed reference source with specific manufacturing details. Online Auction and Marketplace Resources. Real-time market data provides the most accurate indication of current values: eBay Completed Listings - Filter for sold items to see actual transaction prices. Ruby Lane - Specialized collectibles marketplace with verified sellers. Heritage Auctions - Auction records for higher-end Department 56 pieces. Facebook Collector Groups - Current buy/sell activity in collector communities. Selling Your Department 56 Collection in 2022 If you're looking to sell Department 56 pieces, understanding the current market landscape is essential. Best Places to Sell Department 56 in 2022 Different selling venues offer various advantages depending on your collection: Online Marketplaces - eBay: Largest audience but higher fees and shipping challenges. Etsy: Good for vintage pieces (20+ years old). Facebook Marketplace: Local sales with no shipping required. Specialized collector groups: Targeted audience of serious collectors. Physical Venues. Antique malls: Booth rentals for larger collections. Consignment shops: No upfront costs but higher commission fees. Collector shows: Direct access to motivated buyers. Auction houses: Best for rare, high-value pieces. Presentation and Documentation for Maximum Value. How you present your Department 56 pieces significantly impacts potential selling price. To maximize your chances of selling or buying a rare Department 56 piece, it's essential to know when the right time is to act. ===== Timing Your Sale: The Seasonal Shift Market demand for Department 56 pieces fluctuates depending on the season. Peak Season, which runs from September to December, brings with it the highest prices but also intense competition among sellers. During the January Clearance Period, you can find lower prices and motivated buyers looking for deals. However, this period is shorter than the peak season. Off-Season, from March to August, offers fewer buyers but less competition. This can be a good time to buy or sell pieces that are less in demand. ===== Collecting Strategies for 2022 Investment-focused collectors can increase their chances of success by focusing on rarity, condition, and research. Pieces with limited production runs tend to appreciate faster. Mint condition items with original packaging are crucial. Researching production numbers can also help identify undervalued pieces. Building complete themed sets often provides better returns than random pieces. ===== Preservation and Display Tips To maintain the value of your Department 56 collection, proper care is essential. Clean each piece carefully using soft brushes and avoid liquid cleaners. Store buildings in climate-controlled spaces away from direct sunlight to prevent damage. Handle delicate features by holding the building by the base only. Secure display is also vital, as falls can happen easily. Using museum putty or similar products can help prevent accidents. Rotate storage can help prevent warping or damage if not displayed year-round. ===== Valuation and Mixing Collections When valuing your Department 56 collection, it's essential to maintain separate inventories for each brand. Mixing collections may confuse potential buyers and undervalue your pieces. Keep in mind that Department 56 pieces generally scale larger than Lemax, which can affect the visual coherence of a display. ===== Determining Value To determine the value of retired Department 56 pieces, follow these steps: 1. Identify the exact piece name, series, and production year using bottom markings. 2. Check specialized price guides like the Department 56 Village Value Guide. 3. Search completed eBay listings for recent sales of identical pieces. 4. Join Department 56 collector groups for price check assistance. 5. Consult with reputable dealers who specialize in Department 56 collectibles. ===== Remember, condition and original packaging significantly impact the value of retired pieces. 2022 department 56 collectibles market trends include rising value for vintage pieces, with early pieces from all village series continuing to appreciate in value. Vintage collectors are willing to pay top dollar for complete sets with original packaging and accessories, commanding significant premiums over individual items. As younger collectors enter the market, there's a growing demand for pieces with nostalgic appeal or unique display potential. Condition sensitivity is also on the rise, with mint condition pieces fetching higher prices than those in fair condition. Digital authentication resources are becoming increasingly popular, making it easier to verify genuine items and potentially stabilizing their values. ===== Collectors can enhance their experience by focusing on quality, documentation, and the most desirable series, allowing them to make informed decisions that will bring both pleasure and potential financial benefits. Whether you're a seasoned collector, an occasional buyer, or looking to determine the value of an inherited collection, the Department 56 market in 2022 presents numerous opportunities for those who possess the right knowledge and resources. =====