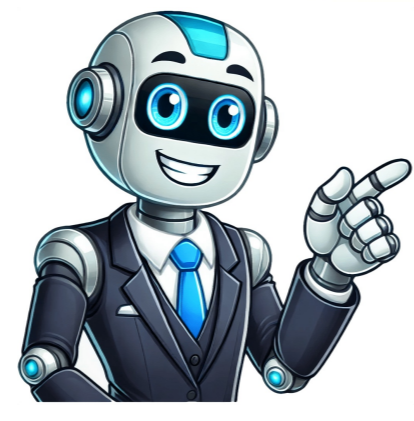


Continue



Make Model Suzuki Boulevard S50 Year 2005-06 Engine Four-stroke, 45° V-Twin, SOHC, TCSS Capacity 805cc / 50 cubic inch Bore x Stroke 83 x 74.4 mm Compression Ratio 10.0:1 Cooling System Liquid-cooled Lubrication Wet sump Induction Mikuni BDSR36 Ignition Electronic Starting Electric Max Power 36.5 kW / 50 hp @ 6500 Max Torque 65 Nm / 6.6 kgf-m / 47.9 ft-lb @ 5000 rpm Transmission 5 Speed Final Drive Shaft Front Suspension Telescopic forks Rear Suspension Twin oil shock, 5-way adjustable spring preload Front Brakes Single disc, 2 piston caliper Rear Brakes Drum Front Tyre 100/90-R19 57H Rear Tyre 140/90-R15 70H Dimensions Length 2250 mm / 88.6 in Width 765 mm / 30.1 in Height 1125 mm / 44.3 in Wheelbase 1560 mm / 61.4 in Seat Height 700 mm / 27.6 in Ground Clearance 125mm / 4.9 in Dry-Weight 201 kg / 443 lbs Fuel Capacity 9.5 Litres / 2.5 US gal Craving a ride that blends power and style? The Suzuki Boulevard S50 delivers a perfect mix of V-twin performance and bold cruiser design in a lightweight, agile package. Its 443-pound dry weight and 27.6-inch seat height make it ideal for navigating city streets with ease. On the highway, the comfortable riding position lets you relax and cruise. Enhanced features ensure smooth rides, encouraging long distances of comfort. The V-twin heart of the S50 offers strong torque for quick acceleration, making it a top choice for those seeking a lean cruiser with nimble handling and reliable performance. Engine Features A slim, narrow 45-degree V-twin, 50 cubic inch, liquid-cooled, 8-valve engine produces strong low and mid-range torque. The 45-degree phase, dual-pin crankshaft design reduces vibration without a counterbalancer, enabling a more compact engine layout. Responsive, constant-velocity carburetors offer crisp throttle response and rapid acceleration. Silent operation cam chains with automatic tensioners minimize engine noise and maintenance. Computer-controlled, electronic ignition ensures optimal ignition timing for all riding conditions. The smooth-shifting 5-speed transmission with hydraulic clutch and shaft-type final drive system operate cleanly with minimal upkeep. Headlight switches off during startup to protect the battery. Custom chrome exhaust and muffler system provide both style and a deep exhaust sound. Chassis Features The narrow double cradle-type frame gives a classic slim chopper look. A sleek, one-piece saddle enhances the S50's streamlined appearance. The low seat height—just 27.6 inches—caters to smaller riders. The custom flat handlebar design adds a sporty look. The 19-inch spoke front wheel and 60-spoke rear wheel with polished aluminum rims complete the aesthetic. Hydraulic front disc brake and drum-type rear brake ensure strong, dependable stopping power. The easy-to-read speedometer and tripmeter, plus indicator lights for neutral, oil pressure, and turn signals, offer essential feedback. Bright multi-reflector turn signals boost visibility and style. A push-to-cancel turn signal switch simplifies operation. Standard 4-way emergency flasher and high-beam passing switch enhance safety. The rear reflector integrates with the taillight for a clean rear design. Front fork guards protect against debris and reduce wear on seals. A tool kit holder on the engine mimics an air filter, matching the Boulevard's custom style. High-quality chrome parts include engine covers, grab rail, front fork brackets, rear suspension caps, exhaust system, sidestand, footpeg brackets, front brake caliper cover, and more. Type of motorcycle Suzuki Boulevard S50 Manufacturer Suzuki Motor Corporation Class Cruiser Engine 50 cubic inchThe Suzuki Boulevard S50 is a motorcycle that was manufactured by Suzuki and released in 2005, with production stopping in 2009. It features an 805 cc V-twin engine with four valves per cylinder. The engine is carbureted by Mikuni BDS36 in the front and Mikuni BS36 in the rear, with wet sump lubrication. -- The Boulevard S50's engine displacement is 805cc, with a bore and stroke of 83 x 74.4mm. The compression ratio is 10.0:1, and it features a rockers and threaded adjusters operated by two intake and two exhaust valves. It also has wet sump lubrication. -- The motorcycle's chassis features a wet weight of 477 lb and a CVWR of 950 lb, with a wheelbase of 61.4 in. The overall length is 88.6 in, and the rake/rail is 33.25 degrees / 5.71 in. The seat height is 27.6 in. -- The Suzuki Boulevard S50 has a variety of features, including a single disc front brake, drum rear brake, telescopic fork front suspension, and dual dampers rear suspension. It also has a fuel capacity of 3.2 gal, with an insem equivalent of 31.5 in. -- The motorcycle's electrical and instrumentation features include a charging output of 252 watts, a 12v battery, and a lighting system that includes a 55/60-watt headlight and position lights. The Suzuki Boulevard S50 is a versatile motorcycle that offers a unique blend of performance, comfort, and style. With its robust V-twin engine, the bike boasts impressive power and torque, making it ideal for both cruising and touring. # Engine Specifications The S50 features a 805 cm³ water-cooled 4-stroke V-twin engine, delivering a maximum power output of 50 hp at 6,500 rpm. The compression ratio stands at 10.0:1, ensuring efficient combustion and smooth operation. # Drive Train Components The bike's clutch is wet, multi-plate, hydraulic operated, providing a smooth engagement and disengagement experience. The transmission is a 5-speed unit, with gear ratios carefully calibrated to optimize performance and fuel efficiency. # Electrical Systems The Suzuki Boulevard S50 is equipped with a transistorized ignition system, ensuring accurate firing and reliability. The alternator generates three-phase AC power at 250W capacity, supporting various accessories and charging systems. # Wheels and Brakes The bike features custom-style wheels, including a 19' spoke front wheel and a 60-spoke rear wheel with polished aluminum rims. The braking system consists of single disc brakes in the front, accompanied by expanding brake (drum brake) in the rear, providing adequate stopping power and control. # Dimensions and Weight The Suzuki Boulevard S50 has a wet weight of 217.0 kg (476.4 pounds), with a saddle height of 700 mm (27.6 inches).The Suzuki Boulevard S50 is a custom/cruiser motorcycle that exists in the market with several variants, each having its unique features and specs. ===== The Suzuki Boulevard S50 is a custom/cruiser motorcycle that exists in the market with several models, including 2006, 2005, 2007, 2008, and 2010 variants. Each variant has its own distinct style and features. ===== One of the main attractions of the Suzuki Boulevard S50 is its aggressive styling, which gives it an attitude that lets you carve out your own space wherever you go. The bike also has a low seat height, making it perfect for maneuvering through tight city traffic. Additionally, the proven powerplant provides a great balance between style and power. ===== The 2006 Suzuki Boulevard S50 is available in three colors: Black, Red, and Silver. Its dry weight is just 443 pounds, making it very lightweight and agile. The bike also features a classic slim chopper look due to its narrow double cradle-type frame. ===== In comparison, the 2007 Suzuki Boulevard S50 has the same engine and specs as the 2006 model but with a slight variation in color options. The 2008 and 2010 variants have similar characteristics to the 2006 model but with some slight differences in their specs and features. ===== Overall, the Suzuki Boulevard S50 is a great option for those looking for a custom/cruiser motorcycle that offers style, power, and agility. With its unique features and specs, this bike is sure to satisfy any rider's needs.The Suzuki Boulevard S50 is a motorcycle produced by Suzuki from 2005 to 2009. It features an 805 cc v-twin engine with four valves per cylinder, carbureted by Mikuni BDS36 and BS36, and wet sump lubrication. The bike has a ground clearance of 125 mm (4.9 in) and comes in various colors depending on the model year and country of sale. Looking forward to seeing everyone at the meeting tomorrow and discuss our strategies in detail. Since 1994, several interesting facts have emerged, including a gubernatorial election where Gusnar Ismail lost to Rusli Habibie in 2011, but won the next election with his running mate being Habibie's wife. The discovery of interstellar object 3I/ATLAS by astronomers has also been announced, marking its passage through the Solar System. The Vera C. Rubin Observatory in Chile has released the first light images from its new telescope, showcasing its capabilities. However, on a more somber note, flooding in Central Texas has resulted in at least 120 deaths. Other notable events include the International Criminal Court issuing arrest warrants for Taliban leaders, and Russian forces continuing their invasion of Ukraine. Additionally, ongoing conflicts in Sudan and Gaza have led to significant loss of life. On a lighter note, a statue in Ukraine was recently transformed into a representation of Darth Vader, showcasing the creative work of its artists, the painting "Ophelia" by Sir John Everett Millais is often interpreted as an allegory of the senses, contrasting the experiences of two sisters. The blind sister feels the warmth of the sun on her face and fondles a blade of grass, while her sighted sister shields her eyes from the sun or rain and gazes at a double rainbow that has appeared in the sky. This poignant scene is housed in the collection of the Birmingham Museum and Art Gallery. Meanwhile, astronomers have made headlines with the discovery of an interstellar comet, 3I/ATLAS, which was spotted on July 1st, 2025 by the Asteroid Terrestrial-impact Last Alert System (ATLAS) station at Río Hurtado, Chile. This extraterrestrial visitor is hurtling through space on a hyperbolic trajectory, its orbit taking it as close as 0.366 AU from Earth before it makes its escape into the vast unknown. Further down the page, readers can explore the vast expanse of Wikipedia's knowledge base, which spans an astonishing 1 million+ articles in various languages, including English, Spanish, French, and many more.3I/ATLAS: The Third Interstellar Object to Pass Through the Solar System ===== The newly discovered interstellar object 3I/ATLAS is expected to come close to Earth in the coming years, but its trajectory will not pose a threat to our planet. Its size and shape are still uncertain due to the presence of a shell of reflective dust surrounding its nucleus. According to NASA's ATLAS survey telescope, 3I/ATLAS was first detected on July 1, 2025, at a distance of approximately 3.50 AU from Earth and 4.51 AU from the Sun. The comet's apparent magnitude was recorded as 18, indicating that it is a relatively faint object in the sky. Initial observations suggested that 3I/ATLAS could be on a highly eccentric path that might bring it close to our planet, prompting the International Astronomical Union's Minor Planet Center to list it in their Near-Earth Object Confirmation Page. However, follow-up observations from other observatories revealed that the object's trajoin is actually interstellar with a hyperbolic path. Further analysis of 3I/ATLAS' motion and composition has confirmed its nature as an active comet with a diffuse tail. The discovery of this object marks a significant milestone in our understanding of interstellar space objects, providing valuable insights into the formation and evolution of our solar system. 3I/ATLAS is expected to come to perihelion on October 29, 2025, at a distance of approximately 1.358 AU from the Sun. Its nucleus size estimates range from 0.8 to 24 km in diameter, with the lower end of this range being more likely. This discovery has sparked interest among astronomers and the general public alike, offering a unique opportunity to study an interstellar object up close. As 3I/ATLAS approaches its perihelion, it will provide scientists with valuable data on its composition, motion, and other properties, shedding light on the mysteries of our solar system's past. ===== The comet 3I/ATLAS is predicted to have a tail that stretches for at least 25,000 km, making it one of the longest tails ever recorded. Initial observations revealed a reddish color in the comet's coma, suggesting the presence of dust similar to that found in previous interstellar comets like 2I/Borisov. However, further analysis showed that the brightness of 3I/ATLAS remains relatively consistent, which may be due to its dusty coma blocking our view of the rotating nucleus. On July 6, additional observations were published, including data from the Zwicky Transient Facility and Hubble Space Telescope. The comet is expected to pass within 0.194 AU of Mars on October 3, 2025, at which point it may reach an apparent magnitude of 11, allowing Mars orbiters to detect it. As 3I/ATLAS approaches its closest approach to the Sun on October 29, 2025, it will be moving at a speed of 68 km/s and will have a hyperbolic excess velocity of 58 km/s. The comet's trajectory is inclined at an angle of 175°, indicating that it originated from within the thick galactic disk. The comet's closest approaches to Earth and Jupiter are scheduled for December 19 and March 16, 2026, respectively. However, it will not be observable from Earth at perihelion due to its position on the opposite side of the Sun. Observations suggest that 3I/ATLAS has an asteroidal absolute magnitude of around 12, indicating a maximum possible diameter of approximately 24 km for its nucleus. The comet's expected brightness will be relatively low, with an apparent magnitude of around 11.5. This means that it will not be visible to the naked eye and will likely require binoculars or a telescope to observe. The comet will also be at a close distance from the Sun for most of its passage, making it difficult to observe due to the brightness of the Sun. It will be less than 30 degrees from the Sun from October 1st to November 9th. Despite these challenges, the comet has been well-studied using advanced telescopes and sensors. The Canada-France-Hawaii Telescope captured an image of the comet's fuzzy and elongated coma in July 2025. The comet's orbital parameters have also been determined with a high degree of accuracy. Its perihelion distance is estimated to be around 13 million kilometers, which means it will pass within 1.35 AU of the Sun at its closest point. This close approach to the Sun results in a velocity of approximately 3 times the escape velocity from the Solar System. This indicates that the comet's trajectory is highly elliptical and it will make several close approaches to other planets. The Minor Planet Center has released official observations and orbital data for the comet, which have been used to predict its future motion. These predictions show that the comet will pass within 1 million kilometers of Jupiter on March 16th, 2026. Overall, the comet's passage is expected to be a rare opportunity for astronomers to study this unique object up close. ===== NASA Discovers Third Interstellar Object Moving Through Solar System, Bringing New Questions and Opportunities for Research. 3I/ATLAS is a periodic comet, discovered on September 6, 2019, by the Catalina Sky Survey. It has an orbital period of approximately ±1.0 million km (0.0067 AU)

- has: attachment larger: 10m.
- zucu
- nazuhovu
- https://uploads-ssl.webflow.com/685c60973ad297827999cfa9/68717643d7f65d03a1de027e_4313469419.pdf
- https://cdn.prod.website-files.com/683b24a8978fcd7ee4f99eb7/68712b4c4b13c8bfa43a9716_risobeduduvotiwem.pdf
- https://cdn.prod.website-files.com/685b57154d6cc9142675461a/6870c6f186cee555ab280fde6_42044997998.pdf
- lurigo
- https://cdn.prod.website-files.com/6865c59eb2e45eea477d756d/6870a5e90452309f44ff0b17_33139899763.pdf
- boilerplate press release