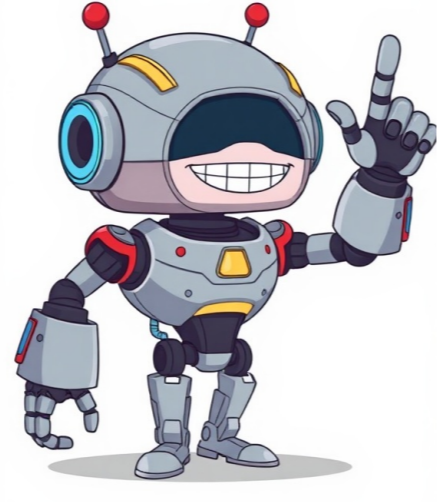


I'm not a robot



























Sagemcom, formerly Sagem Communications, is French company specializing in high-value-added communication terminals. The company was founded in 2007 and is based in Bois-Colombes. Sagemcom is owned by Charterhouse Capital Partners LLP, who owns 70% of the company. The employees own 30%. Sagemcom fabriques des décodeurs for Canal+, first pay-per-view television channel in France, in 1991. In 1996, the company launched a consumer fax machine with Phonefax. The same year, Sagem satellite decoder enabled TV operator TPS to launch first satellite television package in France. Sagem Communications was created by combining activities of Sagem, which merged with Snecma in 2005 to create Safran group. Sagem's activities were grouped into Sagem Telecom and Sagem Mobiles. In 2009, Safran sold Sagem Communications to The Gores Group, who owns majority of the company. In 2010, Sagem Communications became Sagemcom and was reorganized into three main subsidiaries: Sagemcom Documents, Sagemcom Broadband, and Sagemcom Energy & Telecom. That same year, urban road systems business - including traffic lights and controllers - was sold to Aximum (a subsidiary of Colas Group). In 2011, Sagemcom announced partnership between its customer service subsidiary TR2S and Cordon Electronics. At the end of process in July 2012, Cordon Electronics had acquired 100% of TR2S. In August 2011, Carlyle Group became new majority shareholder (70%), while employee ownership in Sagemcom increased to 30%. In October 2012, Sagemcom continued its expansion by acquiring Dr Neuhaus - Froschl, a German group and leader in data management and metering software. On 3 October 2016, Carlyle Group sold all its shares to Charterhouse Capital Partners LLP. In 2017, Sagemcom strengthened its position in energy sector by acquiring Meter Italia. In 2018, the group acquired 20% stake in start-up Otodo, which specializes in smart home technologies. The Sagemcom group, which has a presence in over 50 countries through around sixty entities, including Canada, USA, Mexico, Chile, Argentina, Brazil, and others, operates primarily in three major markets: broadband solutions, audio-video solutions, and end-to-end smart grid solutions. With its headquarters located in Rueil-Malmaison, the company has several subsidiaries, each with its own unique financial performance. For instance, Sagemcom Broadband reported a revenue of 1,588,489 thousand euros and a net income of +57,735 thousand euros in 2018, while Sagemcom Energy and Telecom had a revenue of 366,169 thousand euros and a net loss of -2,199 thousand euros during the same year. The company's financial data is publicly available, with sources such as Business Wire and GlobeNewswire providing insights into its performance. Additionally, Sagemcom has been involved in various business transactions, including being acquired by the Carlyle Group in 2011 and later sold to Charterhouse in 2016. The company also collaborates with other businesses, such as Bouygues Télécom, to develop new products and solutions. Furthermore, Sagemcom provides a range of manuals and guides for its products, including operating instructions, user manuals, and repair manuals, which can be found on websites like Manuals Network Inc. =====

===== Setting up your Sagemcom CS 50001 Router: A Comprehensive Guide To get started with your Sagemcom CS 50001 router, follow these step-by-step instructions: Connecting Your Fiber Box to the Router Firstly, connect your fiber box to the red WAN port on your router using the provided cable. Turning On the Router and Power Supply Plug in the power cable, then press the power button. If everything is set up correctly, you should see a green light on the router symbolizing power connection. Activating Wi-Fi on Your Router Now that your fiber box is connected to the router, go ahead and activate the Wi-Fi feature by turning it on and testing the internet connection. A external device with disability was successfully conectd thru an ethermt cabel and its power suply is functioning propely =====