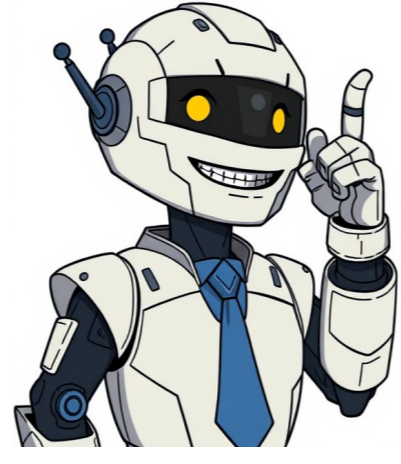


I'm not a robot























The CYCLEPEDIA Honda Rebel online service manual provides comprehensive coverage for the 1985 - 2016 Honda CMX250 Rebel 250 motorcycles. With detailed instructions, color photos, and wiring diagrams, subscribers can access the necessary information to perform routine maintenance and repairs. The manual includes a periodic maintenance chart, covering essential tasks every 4,000 miles, such as air filter replacement, spark plug change, valve clearance inspection, and idle speed adjustment. Tech support is also included, offering assistance with troubleshooting and repair guidance. Additionally, the CYCLEPEDIA Honda Rebel online service manual features full-color photographs and wiring diagrams for specific components, including engine oil, spark plugs, compression check, air filter servicing, tires, brake bleeding, and valve clearance. The manual covers various models of the Honda Rebel, including the 2009 model. A subscription to the CYCLEPEDIA Honda Rebel online service manual provides instant access to detailed information on the following topics: periodic maintenance, clutch cable adjustment, throttle free play, engine idle speed, drive chain adjustment, rear brake switch adjustment, and more. The manual also includes specifications, torque settings, VIN, and engine number locations. The CYCLEPEDIA Honda Rebel online service manual includes comprehensive coverage of external components, such as side covers, seats, fuel tank, shift lever, brake pedal, front fender, rear turn signals, rear fender, and exhaust system. It also provides detailed information on the fuel system, engine, transmission, final drive, front brake, rear brake, wheels, suspension, electrical system, wiring diagrams, and troubleshooting guidance. With a subscription to the CYCLEPEDIA Honda Rebel online service manual, users can access professional tech support, including websites and links to high-quality Rebel 250 resources. The manual also includes an online service log with reminders and a few words about the importance of regular maintenance for optimal motorcycle performance. The Honda Rebel 250 maintenance schedule is divided into two parts: Scheduled maintenance and The "inspection checklist" of places to look for wear, noisy operation, etc. Maintenance Procedures: I: Inspect and clean, adjust, lubricate, or replace, if necessary R: Replace L: Lubricate C: Clean Notes: At higher odometer readings, repeat the service at the interval shown below. Follow the earlier of time-based or distance-based intervals. For example, change the engine oil every 4000 miles/6400 km or 6 months, whichever comes earlier. Every Inspection checklist - Inspect all itemsIIIEngine Oil (Pro Honda GN4 10W-30)RRRRRR6 months Engine Oil Strainer ScreenCCAir CleanerRRMore often if riding in rain or dustValve ClearancesIIICrankcase Breather (if fitted)CCCCMore often if riding in rain / or riding hardSpark Plugs (NGK CR6HSA)Gap: 0.6-0.7 mm / 0.024-0.028 inIRIRI Engine Idle SpeedTarget: 1400 rpm +/- 100Adjust with carburettor screw if accessible.IIIIIEvaporative Emission Control System (if fitted)IBrake Fluid (Honda DOT 4)IIRIR2 years: ReplaceBrake Shoes/Pads WearIIIIIClutch SystemIIIIIIWheels/TiresIIIIII Honda Rebel 250 maintenance schedule Inspection checklist Fuel Lines - Check conditionThrottle - Check smooth operation and free play. LubricateCarburetor Choke - Check functionBrake System - Make sure it worksBrake Light Switch - Ensure brake lights come onHeadlight Aim - Check, adjustSide Stand - Check smooth operation, lubricateSuspension - Check for smooth operation and no leaksNuts, Bolts, Fasteners - Inspect for tightnessSteering Head Bearings - Inspect for smooth operationHonda Rebel 250 standard inspection checklistThe maintenance procedure for slack adjustment on the motorcycle chain should be done in a few steps. First, place the transmission in Neutral and stop the engine. Then, put the motorcycle on the side stand on a level surface. Loosen the rear axle nut and the adjusting nuts on both sides. Turn both adjusting nuts an equal number of turns to get the correct slack. The Honda Rebel 250CMX250C: A Comprehensive Guide to Maintenance and Repair ===== The Honda Rebel 250CMX250C has been a popular model since its release in 1985, known for its classic cruiser styling, affordability, and solid engineering. As with any vehicle, regular maintenance and repairs are necessary to keep it running smoothly. Fortunately, the Motor Bookstore offers a comprehensive DIY motorcycle manual specifically designed for this model, making it easier than ever to perform tasks ranging from small to large. Specifications and Features The Honda Rebel 250CMX250C is equipped with a range of features, including: \* Classic cruiser styling \* Peppy engine performance \* Affordable price point \* Legendary solid engineering The Importance of Maintenance Even the finest machines require regular maintenance to ensure they run at their best. This manual provides detailed instructions and specifications for a wide range of tasks, from routine maintenance to more extensive repairs. What Makes this Manual Stand Out? \* Written by a Honda-trained mechanic \* Focuses specifically on the CMX250C/Rebel 250 models \* Logical and straightforward organization \* Includes color wiring diagrams and exploded views \* 286 pages of detailed rebuild/repair information What to Expect from this Manual This manual offers a wealth of information, including: \* Detailed service and repair procedures \* Clear illustrations and photos for enhanced understanding \* Specifications section with torque specifications \* Quality paper construction Conclusion The Honda CMX250C/Rebel 250 is a reliable and enjoyable ride. With the Motor Bookstore's comprehensive manual, you'll have the knowledge and confidence to tackle any maintenance or repair task that comes your way.