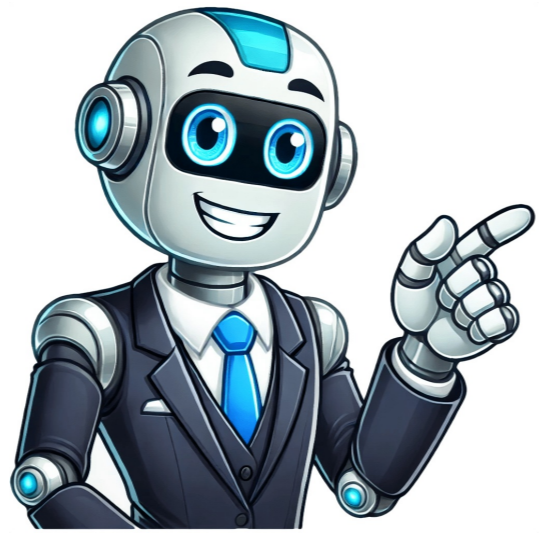


Continue



Rayban face shape guide

If you're a fan of stylish sunglasses, then you know about Ray-Ban. This iconic brand has been on the fashion scene for almost a century, and its frames have become legendary for their timeless style and quality craftsmanship. With two distinct designs—the classic Aviator and the modern Clubmaster—Ray-Ban offers something for every face shape. To help you find the perfect pair of sunglasses, we will provide a comprehensive guide on choosing Ray-Ban frames for your face shape. Aviator sunglasses have been all over since the 1930s, making them one of the oldest and most iconic frame styles. This classic design works best on oval and rectangular face shapes, as the wide lenses can provide plenty of coverage. This style also looks great on round faces, but those with a diamond-shaped face should avoid aviators, as they tend to accentuate the cheeks. The Ray-Ban Clubmaster sunglasses are characterised by a thick upper rim and thinner lower rim, imparting a sense of intellectual chic reminiscent of the 1950s and 1960s. This style is greatly suited for oval faces, as it helps to accentuate the cheekbones and jawline. It can also work on rectangular faces, but those with round or diamond-shaped faces should look elsewhere, as the frame shape can make a face appear wider than it is. When choosing Ray-Ban frames, it's important to ensure they are the correct size and shape for your face. The key is to select a pair of sunglasses that will complement your face shape, not detract from it. It's important to note that certain frame shapes tend to look better on certain face shapes, and the wrong pair can make you appear older or wider than you are. To ensure you select a flattering style for your particular face shape, consider the following: Oval faces: Aviator frames and Clubmaster frames work well on oval faces, as they can provide plenty of coverage. Rectangular faces: Aviators and Wayfarers look great on rectangular faces as they add width and balance. Round faces: Look for angular frames such as the Clubmasters or Wayfarers; these will help to make your face appear longer and leaner. Diamond faces: Aviators look great on diamond-shaped faces, as they can provide plenty of coverage while also accentuating the cheekbones. Regardless of your face shape, finding a pair of sunglasses you feel comfortable in is important. Ray-Ban frames come in various sizes, shapes, and colours, so you're sure to find a pair that makes you look and feel your best. With their timeless style and iconic designs, you can be confident that your Ray-Ban sunglasses will remain in style for years. Ray-Ban aviator sunglasses are more than just sunglasses; they have become a timeless icon. From their first incarnation as protective eyewear for pilots to their current status as a fashion must-have, Aviator frames have transcended time and trends to remain relevant for nearly a century. They evoke an air of cool confidence that will never go out of style and can be seen in celebrities, trendsetters, and ordinary people. With various sizes, shapes, and colours, you're sure to find a pair that fits your face shape and lifestyle perfectly. Whether you are a fan of classic gold or silver aviators or something more modern, such as rose gold frames with gradient lenses, you can be sure that your Ray-Ban Aviators will remain iconic and stylish for years. Whether you're looking for a pair of sunglasses to add a touch of style to your everyday look or are searching for the perfect accessory for a special occasion, Ray-Ban has a perfect pair for you. Their iconic designs will turn heads and make any outfit look more sophisticated and polished. From the classic Aviators and Clubmasters to the more modern updates such as coloured mirrored lenses and bold frame shapes, Ray-Ban sunglasses have something for everyone. So don't feel limited by trends; with Ray-Ban, you can create a look that is true all your own. With their timeless designs and unmatched quality, you can be confident that your Ray-Ban sunglasses will remain in style for years. No matter the season or occasion, Ray-Ban sunglasses will elevate any look. Celebrities and trendsetters have beloved these iconic eyewear pieces for nearly a century, and will continue to impact fashion for years. Whether you're searching for classic aviators or something more modern, opt for Ray-Ban for stylish and timeless eyewear that you'll love for years. With various styles, shapes and colours available, Ray-Ban has something for everyone! So why not add a touch of style to your wardrobe today? Invest in a pair of Ray-Ban sunglasses and never look back. Finding the right sunglasses for your face shape is no easy task. With so many different styles of frames, it can be daunting to shop for a pair of designer sunglasses online - however, we are here to help. Ray-Bans are one of the most iconic sunglasses brands around: recognised globally, their collection includes Wayfarers, Aviators and Clubmasters - but which pair is right for you? Use our guide to find the right Ray-Bans for your face shape...RoundYour Face Is | Roughly the same in width as it is in height; round faces have no sharply-defined jawlines or pointed chins, with a soft, feminine look to them.Celebrity Face Shape Twin | Jennifer Lawrence, Cameron Diaz, Emma Stone and Ginnifer Goodwin all have round faces.Your Ray-Bans Are | The Ray-Ban Wayfarer; perfect for elongating round faces. The geometric shape of the frames adds angles and lines to the softness of your shape.Your Face Is | Hailed as the perfect face shape, oval faces are slightly narrower than they are wide. With no jutting-out cheekbones or jawlines - just beautiful subtle contours.Celebrity Face Shape Twin | Eva Mendes, Beyonce, Gisele and Jessica Alba are a few of the lucky ladies blessed with an oval face shape.Your Ray-Bans Are | Any and all! Those with an oval face can get away with almost every pair of sunglasses. Play around with colours, finishes and sizes when choosing your Ray-Bans.Your Face Is | With an angular bone structure, a square face is extremely striking. Think of a wider jawline - the same width as the hairline, too.Celebrity Face Shape Twin | Keira Knightley, Olivia Wilde and Rachel McAdams all rock a defined jawline and square face shape.Your Ray-Bans Are | Ray-Bans with a curved shape are ideal for those with a square face. Frames with rounder lenses, such as Aviators, do a great job of balancing out jawlines.Your Face Is | Wider across the cheeks with a narrower chin, a heart shaped face traditionally has a widow's peak hairline and defined jawline.Celebrity Face Shape Twin | Kourtney Kardashian, Reese Witherspoon, Miranda Kerr and Madonna are your heart-shaped-face-sisters.Your Ray-Bans Are | Choose light-coloured lenses with thin frames - think pale Aviators - or those which are semi-rimless, like the Clubmaster design.FashionThe diffusion line of the enigmatic fashion figure Paul Smith, here's everything you need to know about PS Paul Smith and the man behind it. 4 years agoBy Sarah Atkinson Do you know which style of sunglasses suits you best? Buying new ones can be a hit or miss, but with our guide to sunglasses for every face shape, you'll find the perfect pair with confidence. With a plethora of shapes, shades and sizes to choose from we've put together our definitive guide to choosing the right sunglasses for your face shape to make your next sunglasses purchase your savviest yet. Defining Your Face Shape The first thing you need to do is DEFINE your FACE SHAPE, so here goes... Round - the width and length of your face is roughly the same (like Emma Stone) Square - strong jawline and broad forehead (like Jennifer Aniston) Oval - balanced face shape with a chin slightly narrower than your forehead (Julia Roberts) Inverted Triangle - your forehead will be significantly wider than your chin (like Reece Witherspoon) Rectangle - your cheek bones, forehead and jaw will be in-line and your face is longer than it is wide (like Meryl Streep) Opposites Are Attractive The key thing to remember is to choose the opposite style of frame to your face shape. So for example, if you have a square face you are better choosing sunglasses with a more rounded style of frame as this will soften and complement your features. On the other hand, if you have a round face shape then a more angular frame will work best for you as it will offer some definition and balance. The exception to this rule is for those of you with a heart shaped face - you actually need to mimic your face-shape with your frames. The Key Styles Here's a round-up of the most common glasses styles and who can wear them... Wayfarers - the classic Rayban style, Wayfarers have been a staple sunglasses style for decades. This style will work for you if you have a ROUND face shape. Round - another classic sunglasses shape, from big bug glasses to the smaller-styles, round glasses tend to come in a wide variety of sizes. They will work best for you if you have more angular features so those with a SQUARE face shape will look great in these. If you have a RECTANGLE face shape a more oval style will work for you with wider arms that break up the length of the face. Do remember to keep your proportions in balance too; the larger the face, the larger the sunglasses should be. Aviators - from the days of Top Gun to now, Aviators will never go out of fashion and will work beautifully for you if you have an INVERTED TRIANGLE face shape as they follow a similar shape. Be aware of the weight of your frames with this style. If you're petite/have delicate features then avoid heavier frames as these will over-power your face. Cats Eyes - add an instant touch of Hollywood glamour with the timeless Cats Eye style of sunglasses. The upward angle of this style works beautifully to balance a ROUND face shape and if you opt for a frame that has a softer curve (rather than anything to angular) then they will also work well to add width to a RECTANGLE face shape. If you have an OVAL face shape then you can wear whatever you like, so mix it up and have some fun! Your only considerations are the size and weight of your glasses to ensure they harmonise with your features. A Final Word On Colour Whatever your face shape, do think about the COLOUR you choose for your sunglasses and use your colour palette to guide you. As your glasses are worn on your face it is vital they're in a shade that perfectly complements your colour characteristics. Find out more about our colour and style services. For one-to-one colour and style advice get in touch with your local Colour Me Beautiful consultant here. Additional topicsRay-Ban has been one of the leading glasses brands for decades, with a loyal and ever-growing fanbase. What started out with purely functional intentions evolved into a huge success story, and nowadays the cult label offers a massive variety of prescription glasses and sunglasses. Many Ray-Ban designs have been adopted by other labels, but the famous Ray-Ban logo on the lens or temples means the originals will always stand out. A small but illustrious group make up the most popular models: Aviator, Wayfarer, Clubmaster and a few others are regarded as timeless classics on the sunglasses scene. Let's take a look at what makes each model special, and find out which one is best suited to you. Guide: face shapeHow to find the right size Ray-Ban sunglassesEvery face is different, and that also goes for size. Narrow faces require a smaller frame than wider faces to ensure an optimal fit. Taking this into account, Ray-Ban offers some of its models in three different sizes: Small, Standard and Large. For most people, the Standard model is fine. When you buy Ray-Ban sunglasses for the first time, you can easily determine the right size for you with a bank card. The card is roughly as wide as the standard lens-size. Hold the width of the card next to your nose.A If the end of the card's shorter side covers the outer corner of your eye, go for the Standard size.B If the end of the card extends beyond your eye, choose the Small size.C If the end of the card doesn't reach the outer corner of your eye, go for the Large model.If you already have a pair of sunglasses, you can consult the measurements on the inner side of the temples. They'll look something like this: 50-19-140.The first number gives the width of the lenses in millimetres.The second number gives the width of the bridge in millimetres.The third number gives the length of the temples in millimetres.You can also figure out the size of your glasses yourself. To learn how, click here: Glasses sizeAviator, Wayfarer and Co. - which Ray-Ban model suits you best? Choosing the best pair of Ray-Bans that suits your face shape can be a difficult task. With various styles, frames, and lenses available in Ray-Bee's collections, it can be an overwhelming process to find the perfect one for you. You'll want to consider your face shape and size in order to get a pair that perfectly complements your style. How to Measure Your Face Shape Measuring your face shape is an important step to consider when selecting the perfect pair of Ray-Ban sunglasses. Knowing your face shape will help you choose the ideal fit and style for your face. Here are some tips on measuring the shape of your face and which frames would suit it best. First, take a few pictures. Take pictures of both the front and sides of your face in natural light with little to no makeup. It's important that you can clearly see your forehead, jawline, cheeks, and chin when taking these photos. Next, measure the width and length of each major facial feature separately using a ruler or measuring tape: forehead, jawline, cheeks (across the widest part), and chin (at its widest point). Looking at these measurements in combination can help you determine which of the basic face shapes yours falls into: oval, round, square, or heart/triangle shaped. For example, if you have a square-shaped face, notable features include fullness at each corner of the jawline with equal length measurements for all areas surrounding it-forehead to chin measurement being slightly longer Than width across cheekbones or between temples near eyes. A deeper brow line showcases a square profile but it should be balanced so avoid sunglasses with too much coloring around that area as this might exaggerate already prominent features. Similar sunglass styles with an equally wide lens opening suit this facial structure best such as aviators or navigators as well as angularly cut styles like ladies' cat eye frames to further enhance natural bone structure instead of detracting from it. Tips for Choosing the Right Ray-Bans Source: allure.com Shopping for sunglasses isn't as simple as just choosing a pair that looks good. Different styles of frames work better with certain face shapes and features. And when it comes to Ray-Bans, the brand's timeless and classic silhouettes can be tricky to decipher—the Aviator is a flap-top frame, while the Wayfarer is a straight frame. So, it's important to choose the right pair of Ray-Bans to ensure you'll love wearing them, no matter what style you select. Here are some tips: Choose frames that contrast your face shape; square frames for round faces and round frames for square faces Go for bigger frames if you have a rounder face; it will help offset the curves Avoid angular or boxy glasses if you have delicate or softer facial features, as they can make your face look smaller than it really is Opt for plastic rather than metal if you want to create more dimension Look for angular frames with distinctive temple pieces or color accents if you want something bolder Consider lenses that fade from dark at the top to light at the bottom, or from light at the sides blending into darkness in the center - these add contours that will flatter any face shape Different Ray-Ban Styles Source: gearpatrol.com Ray-Ban sunglasses are iconic and with so many styles to choose from, it's important to find the ones that best suit your face shape. Whether you want a classic aviator style or something more modern, choosing the right pair of Ray-Bans can help you look your best. To make sure you find the perfect fit, here's a brief guide to some of the different Ray-Ban styles and how they fit different face shapes: Square: Rectangular frames like wayfarers work well for square-shaped faces since they soften angular features. The Aviators are also especially flattering for those with strong facial features. Round: Squared corner frames will give rounded faces a better definition. The Wayfarer is always a popular choice but Variants and Clubmaster also look great on rounder faces. Oval: Almost any frame shape looks good on oval-shaped faces since their bone structure is naturally balanced and well-proportioned. Aviator or Erika pilot shapes are especially suited to this face shape. Heart: To balance out heart-shaped faces, pick larger frames that extend past your jawline like Clubmasters or half-frame styles such as Caravan or Rb4068. Avoid sunglasses with too much detailing at the top as they can draw attention away from other parts of your face and make it appear overly pointy. Diamond: Rimless frames like Erika will help draw attention upward which highlights the cheekbones and helps create balance in diamond-shaped faces. Slightly rectangular frames are also the most flattering for this beautiful face shape How to Choose the Right Lens Color Source: fashionbeans.com When selecting a pair of Ray-Bans, one of the most important considerations is the lens color. Although stylish trends can vary greatly from season to season, the right lens color will still remain timeless classic. Lens colors vary by style and can be chosen according to your preference or to match your particular face shape. Grey lenses are ideal for those with round or square faces as they will not draw attention to the face shape and can make you look more balanced. It also allows for good visibility in different lighting conditions and has been a classic color option since the brand's inception in 1937. Brown lenses are great for those with oval faces as they help to refine features, making them appear more angular. The most common type is a warm brown shade called "Havana," which pairs nicely with warm-toned skin tones. Green lenses are traditionally associated with aviator styles, but can also be found in other designs now as well. They provide a classic look that flatters all face shapes but especially accentuates angular features like those seen on people with oval faces. Additionally, green lenses create better depth perception than grey and brown lenses and provide minimal distortion of colors; this allows you to better see true colors rather than distorted hues that may occur with other shades. Conclusion When it comes to choosing the right sunglasses, there are many factors to consider. Your face shape, size, and personal style are all important when selecting your perfect pair. With so many different frames and styles of Ray-Bans, you're sure to find the perfect ones for you. Whether it's a classic aviator or wayfarer look, the sky's the limit when it comes to finding your ideal set of sunglasses with Ray-Bans.

Which ray bans for my face shape. Ray ban face shape guide usa. How to fit ray bans to your face. Face shape guide. Rayban face shape guide not working. Rayban for square face.