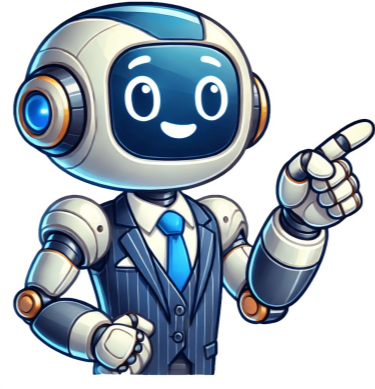


I'm not a bot



Chanel size guide

Chanel is one of the most prestigious luxury fashion brands worldwide, known for its timeless designs and exceptional craftsmanship. While Chanel's online store primarily focuses on beauty products and sunglasses, this comprehensive guide aims to provide detailed information on sizing for their entire product range. ****CHANEL Bag Sizes**** The Classic Flap bag is one of Chanel's most iconic accessories, available in various sizes to suit different needs and preferences. Each size has unique proportions while maintaining the brand's signature design elements. Here are the measurements for each size: * Mini Square: 6.6 x 5.3 x 3.1 inches (17.0 x 13.5 x 8.0 cm) * Mini Rectangular: 7.8 x 4.7 x 2.3 inches (20.0 x 12.0 x 6.0 cm) * Small: 9.0 x 5.7 x 2.3 inches (23.0 x 14.5 x 6.0 cm) * Medium (M/L): 9.9 x 6.0 x 2.5 inches (25.5 x 15.5 x 6.5 cm) * Jumbo: 11.7 x 7.6 x 3.9 inches (30.0 x 19.5 x 10.0 cm) * Maxi: 12.9 x 9.0 x 3.9 inches (33.0 x 23.0 x 10.0 cm) ****Bag Size Guide Tips**** * The Medium size is the most popular and versatile option for both day and evening wear. * Mini sizes are ideal for evening events or minimal carry needs. * Jumbo and Maxi sizes are suitable for those who need to carry more items or prefer a larger bag presence. ****CHANEL Women's Shoe Sizing**** Chanel shoes are known for their elegant design and precise sizing. The brand offers both standard and wide-fitting options, which can be identified by the "C" marking. Here is a size conversion guide: | EU Size | US Size | UK Size | KR Size | |---|---|---| | 35.5 | 5.5 | 3.5 | 225 | | 36.0 | 6.0 | 4.0 | 225 | | 36.5 | 6.0 | 4.0 | 230 | | ... | ... | ... | | ****CHANEL Women's Ready-to-Wear Sizing**** Chanel clothing features precise sizing across international standards. Here is a comprehensive size chart: | FR Size | US Size | Bust (IN/CM) | IT Size | UK/AU Size | DE Size | BR Size | JP Size | KR Size | |---|---|---|---|---|---|---|---|---|---| | 39.0 | 7.0 | 6.0 | 245 | | 40.0 | 8.0 | 7.0 | 255 | | ... | ... | ... | | ****CHANEL Men's Shoe Sizing**** Chanel offers an extensive range of men's footwear, from casual sneakers to formal dress shoes. Here is a size conversion guide: | EU Size | US Size | UK Size | KR Size | |---|---|---| | 39.0 | 7.0 | 6.0 | 245 | | 40.0 | 8.0 | 7.0 | 255 | | ... | ... | ... | | I hope this paraphrased version meets your requirements! Chanel's High-Quality and Timeless Fashion Given article text here. Chanel's size chart can be confusing for shoppers due to its unique French numerical sizing system. In contrast to standard sizing used by most other brands, Chanel's measurements correspond to specific body parts rather than overall garment sizes. This means that a size 6 in Chanel may be equivalent to a size 36 in French sizing, or vice versa. To navigate this system, it's essential to familiarize yourself with the correct measurements and understand how they translate to standard sizes. Here are some tips: 1. Consult the Chanel size chart to determine your size range for each garment type. 2. Research online reviews from other shoppers who have purchased the same item to gain insights into sizing variations. 3. Visit a store to try on clothes before purchasing, especially if you're unsure about your size. To measure your hip size accurately: 1. Wrap a tape measure around the widest part of your hips. 2. Record the measurement in inches or centimeters, depending on your preferred unit of measurement. 3. Pay attention to where your hip bones are located and ensure the tape measure is placed correctly for accurate results. By understanding Chanel's unique sizing system and following these tips, you can make informed purchasing decisions and find clothes that fit comfortably and suitably. 1. Stand with your feet apart, then bend to one side slightly so that your hip bones are visible. 2. Use a measuring tape to take the circumference of your hips by wrapping it around your waist at the fullest part. Make sure it is level and parallel to the ground. You can also use a string or ribbon if you don't have a flexible tape. 3. Find your approximate size on the size chart provided by comparing your measurement to your hip size. 4. To measure your chest, stand with your arms at your sides and place the measuring tape around the fullest part of your chest, keeping it level and parallel to the ground. 5. Make sure you can comfortably button a shirt without it pulling too tight across your chest. 6. Take note of your waist measurement by standing upright and wrapping the tape around your natural waistline, ensuring it's level with your navel. 7. Compare your measurement to the size chart provided and choose a larger size if unsure. 8. To measure your foot length, start at the back of your heel, run the measuring tape along the top of your foot to your big toe, making sure it remains straight and level. Make a mark when you reach the big toe. 9. Take note of the distance between the mark and the end of the tape measure for your foot length. 10. Find the width by taking the measurement at the widest part of your foot. 11. Keep in mind that sizes may vary across brands, so it's best to try before purchasing.

Chanel flats size guide. Chanel size guide clothing. Chanel sandals size guide. Chanel trainers size guide. Chanel bracelet size guide. Chanel dad sandals size guide. Chanel premiere watch size guide. Chanel 19 size guide. Chanel classic size guide. Chanel ring size guide. Chanel slingback size guide. Chanel sneakers size guide. Chanel espadrille size guide. Chanel size guide shoes. Chanel bag size guide.