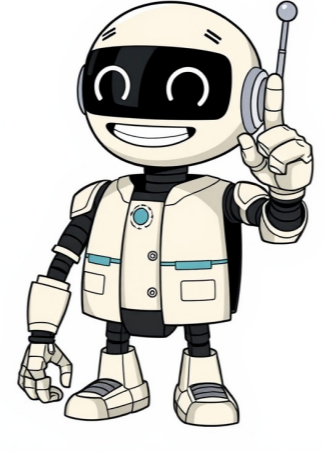


Click to verify

































Citra Emulator Offers Seamless Compatibility and Advanced Features ===== The Citra emulator is designed to run most commercial games at full speed, provided the necessary hardware requirements are met. It boasts an extensive compatibility list, which can be found on their website. ===== For users seeking the latest news and updates, they can visit the official Citra website. Before embarking on the project, it's recommended to peruse the FAQ section for a smoother experience. Additionally, those in need of assistance can refer to the guiding document on asking for help. ===== Citra operates under two primary release channels: Nightly and Canary. The Nightly build is based on the master branch and features already reviewed and tested elements. In contrast, the Canary build draws from the same source but includes experimental features still in development. Users can install these builds using the provided installer or access specific versions/standalone releases through the Nightly and Canary repositories. ===== Android builds of Citra are available for download on the Google Play Store, while a Flatpak version is accessible via Flathub. The build process details are outlined in the Flathub repository, with most development taking place on GitHub. The central repository is also hosted on GitHub, where users can engage in discussions and contribute to the project. ===== For those interested in contributing to the user interface translation or financial support, Citra offers a range of options. Transifex serves as the centralized platform for translation work, with periodic upstreaming of translations. Patreon patrons help sustain the project, while donations of games, hardware, and used consoles are also accepted. ===== Citra is licensed under the GPLv2 (or any later version), as outlined in the LICENSE.txt file. This open-source emulator boasts capabilities such as running commercial games at 100% speed, improved graphics, and dual-screen display options. Furthermore, users can utilize keyboard controls or map external gamepads for an immersive gaming experience. ===== Citra excels in its ability to transform Nintendo 3DS games, offering a cinematic experience rivaling handheld consoles. Games like Pokémon Sun and Moon, or The Legend of Zelda: A Link Between Worlds, showcase the emulator's prowess. With Citra, users can indulge in their favorite handheld titles on desktop machines, making it an ideal choice for readers seeking to support Windows or explore open-source volunteer projects. The Citra emulator for PC lets you play Nintendo 3DS games on Windows, Linux, macOS, and even Android. It emulates the 3DS hardware so you can legally run your game backups with smoother performance and better visuals. If you're ready to revive your 3DS collection on your desktop, this step-by-step guide will walk you through it all. If you're exploring more options, check out all-in-one emulators that can run games across multiple platforms. Component minimum requirements: OS: Windows 10/11 (64-bit), macOS, or Linux; CPU: Intel/AMD with strong single-core performance; GPU: OpenGL 3.3 compatible; RAM: 4 GB (8 GB recommended); Storage: SSD preferred for faster load times. Visit the official site: if the main site is unavailable, use GitHub or Archive.org mirrors. Choose the installer for your OS (Windows, Linux, macOS). Run the .exe installer, pick the Nightly build for stability or select the Canary build for experimental features. Open Citra from your desktop or start menu; you'll see a clean UI with options to load games, edit settings, and manage logs. You'll need shared\_font.bin, config\_savegame, and other system files; extract them from your own 3DS using godmode9 and copy them to c:\users\{appdata\roaming\citra\sysdata}. Use godmode9 to back up your 3DS cartridges to .3ds or .cia formats in Citra. Go to File > Load File for individual games or File > Add Game Directory to point to your whole collection. Go to Emulation > Configure to adjust resolution, scaling, and CPU clock speed; select your hardware renderer (OpenGL or software), enable v-sync, and texture filtering for smoother visuals. Go to Emulation > Configure > Controls to remap keys for gamepad, keyboard, or mouse; test your controller input to verify mapping. Citra supports local wireless emulation for some multiplayer games. Join a Citra room or create your own; not all titles are supported, so check compatibility beforehand. Always check the Citra compatibility list to see how well a game runs. Citra supports both native in-game saves and emulator save states; expect occasional glitches, especially in 3D-heavy titles. The Citra Emulator is a popular choice for playing Nintendo 3DS games on PC, Android, and other platforms. To use Citra legally, you need to own the original game copies and extract the system files and games yourself. # Game Compatibility and Builds Citra supports most 3DS titles, including Pokémon Ultra Sun/Moon and The Legend of Zelda: A Link Between Worlds. However, it's essential to check the Citra Compatibility List to confirm game support. When it comes to builds, Nightly builds are more stable, while Canary builds offer newer features but may cause bugs. # System Requirements To set up the Citra emulator on your PC or Android device, you'll need a 64-bit processor, at least 4GB of RAM, and an OpenGL 4.3+/Vulkan-compatible graphics card. For Android users, you'll need an Android 8.0+ device with a Snapdragon 845+/Exynos 9810+ CPU. # Installation The installation process is relatively simple, with instructions available on the Citra website. For PC users, download the .exe file and run it to install. On macOS or Linux, drag the Citra application to the Applications folder. Android users can get the APK from citra-emu.net or Google Play Store. # Game Management To play games, you'll need to dump your legally owned 3DS games to .3ds/.cia files using homebrew tools. Then, load the game in Citra by going to File > Load File and selecting your game. Configure controls by mapping keyboard/gamepad inputs under Emulation > Configure > Controls. # Graphics Settings Adjust graphics settings to enhance visual quality, including resolution, v-sync, and shaders. You can also use save states to save progress anywhere and rewind gameplay. Customization: Tailor controls and graphics with cheats. Cross-Platform Saves: Sync progress between devices. CONS Hardware Demands: Needs a powerful PC/phone for smooth performance. Legal Risks: Misuse of ROMs can lead to piracy issues. Minor Bugs: Some games may have audio/visual glitches. Yes, but you must dump games from your own 3DS. Downloading ROMs you don't own is illegal. Yes! Enable Emulation > Configure > Web Service to access multiplayer. Update graphics drivers, lower resolution, or close background apps. Check Citra's Compatibility List for game-specific fixes. PC: Download the latest build from the website. Android: Update via the Play Store or APK. Yes! Citra supports Xbox, PlayStation, and Switch Pro controllers. Conclusion Citra Emulator revitalizes the Nintendo 3DS library with modern enhancements, offering a nostalgic yet fresh experience. Always ensure you comply with legal guidelines when using emulators. Join Citra's Discord or GitHub for support and updates. With customizable settings, Citra permits users to optimize performance based on their device's capabilities.