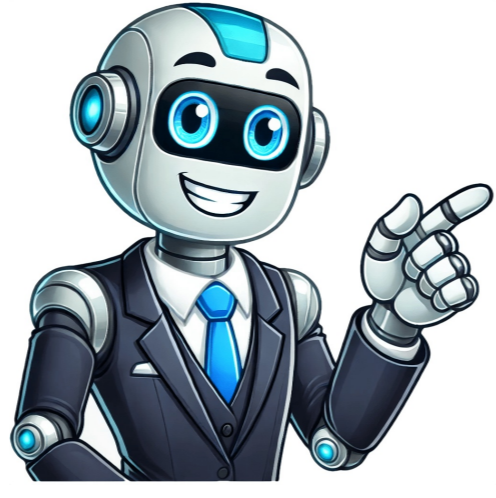


I'm human





The Strength tarot card in love is often misunderstood as a straightforward reflection of one's emotional prowess, but its nuances and subtleties are multifaceted. When appearing in a reading, the card signals patience, compassion, and self-awareness - urging you to tame your emotions rather than using brute force. Rather than predicting outcomes, it encourages introspection, helping you understand your capacity for emotional regulation. The card's symbolism is rooted in balance, where one harnesses inner courage while maintaining kindness. This often translates to handling relationship challenges with compassion, rather than aggression. The lion, representing primal emotions, teaches us to gently tame our feelings, coexisting with our instincts. The woman aspect of the Strength card represents calmness and control, emphasizing that love thrives when led by compassion and understanding. Her infinity halo symbolizes limitless strength within, urging you to tap into patience and courage to address issues in your relationship or reminding you that vulnerability is a powerful force. As a guiding force, the Strength card encourages breathing through chaos, offering words of encouragement and amplifying inner radiance. It's also a gentle nudge to address unresolved conflict with kindness, promoting growth and transformation even in challenging times. For those in relationships, it whispers: "Patience creates growth," while singles are reminded that true strength lies in staying open to love despite past heartbreaks. This card is not a fortune-teller but a trusted guide, helping you delve into your heart for insights and understanding, offering comfort as you navigate love's complexities. The strength card in tarot readings can sometimes indicate challenges in love, such as feeling emotionally drained or struggling with insecurity. However, these reversals are not necessarily bad omens, but rather opportunities for growth and self-reflection. The card encourages you to acknowledge your fears and take control of the situation, rather than trying to control others or situations. You have the inner strength and courage to face challenges and nurture connections. The Strength card reminds you that you are braver, stronger, and loved more than you believe, and that with its guidance, you can find patience, compassion, and forgiveness.

Meaning of the world tarot card in love and relationships. Strength love tarot. Strength tarot card meaning love. Strength tarot meaning in love. Tarot card meanings relationships. Strength tarot card meaning relationship.