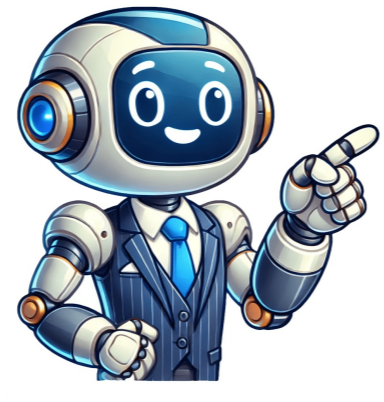


Click to prove  
you're human













## Asos shirt size guide

ASOS Sizing Guide: Breaking Down the Confusion for a Perfect Fit What's your ASOS size? This question has long been a source of frustration, especially for women who have traditionally been expected to conform to a skinny beauty standard. However, with the help of this comprehensive guide, all women and men can find their perfect fit. Despite the existence of a size 6 pair of jeans with an estimated waistband difference of 6 inches, sizing remains a challenge. This has led to online shopping becoming increasingly difficult, with customers returning an estimated 40% of bought clothes due to sizing issues. The economic impact on retailers is substantial, while customers are left feeling unsatisfied and unlikely to return. To ensure accurate women's jean sizing, ASOS recommends measuring around the natural waistline and from the top of the inside leg at the crotch to the ankle bone. Interestingly, a size 8 dress in 1958 was equivalent to a size 16 today. Sizing varies across countries and is particularly important for plus-size women who previously faced limited options. While some retailers have made strides in accommodating diverse sizes, confusion remains due to differing sizing terms used by manufacturers. The ASOS Curve size guide offers helpful measuring tips, including: \* Measuring around the fullest part \* Measuring around the natural waistline \* Measuring 20cm from the natural waistline For jackets and shirts, the fit is determined by chest size and neck size. For example, a chest size of XXXS corresponds to a neck size of 30-32 inches. In conclusion, understanding ASOS sizing is crucial for finding a perfect fit. With this guide, women and men can navigate the complexities of sizing and enjoy a more satisfying shopping experience. Shopping Tips for Men's Fashion: \* For men, sizes are determined by chest, waist, and hip measurements. \* There are different sizes for pregnancy wear, which requires adjustments around the bust, waist, and hips. \* Plus-size clothing also has its own size chart, but it's best to measure your body first. How to Measure Your Body: \* Take your measurements at the fullest part of your bust (chest), natural waistline, and largest part of your hips (hips). \* For petite women, clothes are cut shorter from neck to waist and should be fitted perfectly to flatter their figure. \* To get a perfect fit for petites, take body measurements as follows: chest (fullest part of bust), waist (natural waistline), and hips (largest part). ASOS Size Guide: \* Petite sizes are available up to 5'4" and under. \* Curvy sizes are available with larger bust, waist, and hip measurements. Importance of Accurate Body Measurements: \* Having accurate body measurements is crucial for selecting the right garment size. \* Men's and women's clothing sizes can vary between retailers, so it's best to measure your body before shopping. Overall, the text provides a guide on how to take accurate body measurements and what to look out for when shopping for clothes. It also highlights the importance of considering body shape and size when selecting garments. ASOS size chart guide aims to solve sizing issues for women and men, but still poses challenges due to varying sizes across brands. The guide provides measuring tips to ensure a perfect fit, yet different manufacturers use unique sizing terms, making it difficult to understand exact sizes. We reviewed ASOS size chart guide and other brands' sizing charts to help customers find their perfect fit. However, online shopping remains challenging due to sizing issues, with an estimated 40% of returned clothes being due to poor fitting. This leads to extra costs for retailers and unsatisfied customers. ASOS Curve size guide offers measuring tips, including measuring around the natural waistline and from the top of the inside leg. The brand's sizing also varies across countries, making it essential to have conversion charts for each country. To ensure a perfect fit, women can use ASOS Curve size guide's measuring tips. For example, to measure chest size, place the measuring tape around the fullest part of the bust, while to measure neck size, wrap the tape around the base of the neck. This will help customers choose the correct size and avoid returns. According to historical data, women's sizes have changed over time, with a size 8 dress being a size 16 in 1958. Today, ASOS Curve size guide offers plus-size options, making it easier for women to find clothing that fits their body. However, it's still essential to understand the sizing terms used by different manufacturers and brands. Some retailers use numerical sizes (10), letters (W), or general sizing (2XL). To navigate these differences, customers can refer to ASOS Curve size guide's measuring tips and conversion charts for each country. By doing so, they can find their perfect fit and avoid returns, making online shopping a more enjoyable experience. \*\*Men's Waistcoats\*\* \* XL42-44106-11117.545.5XXL46-48116-121XXL44-46111-11618.547.5 \* Size charts for chest, waist, and hips in inches: \* Chest: 32-36 inches (standard sizes) \* Waist: 26-30 inches (short), 28-34 inches (regular), 36-40 inches (long) \* Hip: 26-30 inches (short), 28-34 inches (regular), 36-40 inches (long) \*\*General Size Charts\*\* \* Chest, waist, and hips in cm: \* Bust, waist, hips in inches: \* Short: 32-62.5 inches (27.2-48.8 cm) \* Regular: 63.5-72.9 inches (16.1-18.6 cm) \* Long: 73.4-81.3 inches (18.7-20.7 cm) \*\*Online Shopping Tips\*\* \* For pregnant women, clothing size remains the same as regular sizes but with adjustments around the bust, waist, and hips. \* Maternity clothing is available in plus sizes but may vary between retailers. \* Shoe sizes are determined by foot length, not just width or size. \*\*Measuring Your Feet\*\* \* To measure your feet, follow these steps: 1. Find a flexible ruler or tape measure. 2. Stand up straight with your weight evenly distributed on both feet. 3. Place the ruler or tape measure along the longest distance between the heel and the tip of your longest toe. 4. Take note of the measurement in inches or centimeters. \*\*Petite Size Guide\*\* \* Petite clothing is designed for women 5'4" (162.56 cm) and under. \* To get a perfect petite fit, measure: 1. Chest: around the fullest part of the bust 2. Waist: around the natural waistline 3. Hips: with heels together, around the largest part of the hips Note that this is not an exhaustive list of size charts or measurement guides, and individual retailers may have different sizing options and measurements. Body Measurement Guide for Accurate Clothing Size: Understanding Men's and Women's Measurements Measuring your body accurately is crucial to select the right garment size. Men's and women's measurements differ significantly; men's include chest, neck, arm, and waist, while women's include bust, waist, and hips. Is size a design issue or data-driven? Imagine having a universal chart that caters to every brand, allowing designers to create clothes without bias towards specific sizes. If we're honest about our body measurements, online shopping could become a breeze for everyone. Just imagine browsing through your phone in the comfort of your own home, finding a dress that fits perfectly without worrying about it being too small or too large. Sizing is a solvable problem, yet it persists. The introduction of ASOS sizing chart aims to address some of these challenges. Share any questions you have with us in the comments section. England is known for its unique blend of style and comfort, where people prioritize practicality over trends. They dress according to the season, rather than following fleeting fashion. A crisp white shirt and a well-fitted blazer are wardrobe staples. Leather jackets are also popular, thanks to the chilly weather. For men, formal wear reigns supreme unless attending a casual event. Getting ready in the morning requires attention to detail, with perfect fit, style, and look being essential. The measurements of these elements are crucial, making it necessary to take precise measurements, such as shoulder, collar, chest/bust, waist, arms/sleeves, and pocket position. Sizing varies greatly across countries and brands, with even the US and UK adhering to different standards. However, in this article, we'll provide you with a comprehensive guide on how to measure your UK shirt size using simple illustrations and charts. \*\*Weather in England\*\* In England, the weather is notoriously unpredictable, so it's essential to dress accordingly. Women often prefer wearing stylish tops and shirts paired with skinny jeans for a chic look. Checking the forecast before heading out is crucial, as sudden rain showers can catch you off guard. \*\*UK Clothing Sizes\*\* To navigate UK clothing sizes, here are some key points: \* In the UK, medium-sized tops have a 19" (48 cm) width and 27" (68.5 cm) length. \* Large tops have a 20" (50.5 cm) width and 28" (71 cm) length. \*\*Unisex Clothing\*\* Unisex clothing in the UK refers to items suitable for both men and women, with sizes ranging from Small (18" W, 26" L) to Extra-Large (20.75" W, 29" L). \*\*Men's Clothing Sizes\*\* Interestingly, men's clothing sizes in the UK are similar to those in the US, including neck, collar, sleeve length, sport coat, jacket sizing, chest size, and waist size. \*\*Women's Shirt Size Guide\*\* Here is a comprehensive guide to women's shirt sizes in the UK: | UK Size | Bust (inches/cm) | Waist (inches/cm) | Hips (inches/cm) | | --- | --- | --- | --- | | 18/44 | 110.5/28.3" | 36/91.4" | 46/116.8" | | ... | ... | ... | ... | | \*\*International Size Conversions\*\* To convert UK sizes to other international sizes, here's a rough guide: \* XS: 0-4 (US), 36-40 (EU) \* S: 6-8 (US), 42-44 (EU) \* M: 10-12 (US), 46-48 (EU) \*\*Dressing in the UK\*\* To dress like a local in the UK, focus on smart yet casual attire. Women often wear dresses as a national costume or for leisure activities. To find your size, consider taking horizontal and vertical torso measurements, as well as sleeve length.

Asos shirt guide. Asos men's shirt size guide. Do asos sizes run small. Asos guide size. Is asos true to size. Size guide asos app. Are asos sizes big or small. Asos t shirt size guide.