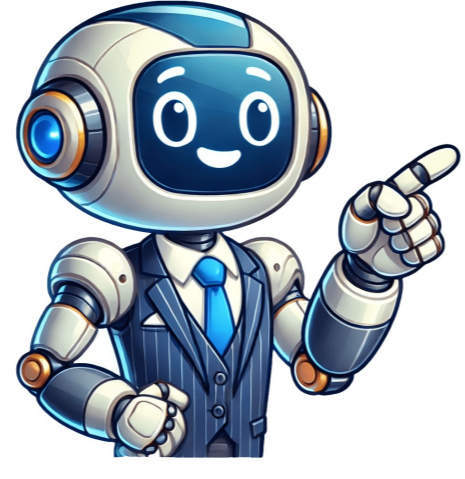


[Click Here](#)































National Parks Maps Guide to Washington D.C. This guide serves as a map for visitors to navigate the National Mall area in Washington D.C., showing its historical landmarks and layout. The mall is surrounded by Independence Avenue to the south, Third Street to the east, 14th Street to the west, and Constitution Avenue to the north. The green areas on the maps are parks maintained by the National Park Service. Parking is limited, with primary garages near the streets surrounding the Mall. Public transportation like Metro Stations are convenient options during peak traffic times. The map shows the Washington Monument, White House, Lincoln Memorial, and Tidal Basin among other attractions. The National Mall is not only a great place to visit museums and landmarks but also a popular spot for picnics and outdoor events. It has been used as a site for protests and rallies by Americans and visitors from around the world. The unique blend of architecture and natural beauty celebrates America's history and democracy. Some notable buildings include the U.S. Capitol Building, which is one of the most recognizable historic structures in Washington D.C., located at the opposite end of the National Mall from the Washington Monument. Union Station is another significant landmark that houses a shopping mall, world-class exhibitions, and international cultural events. Getting around the area can be challenging, especially during rush hour, but learning the Metro system or taking a sightseeing tour can help. For driving directions, follow the Capital Beltway/I-495 South to Washington, then take George Washington Memorial Pkwy and I-395 North to reach the National Mall. National Mall Map: A Comprehensive Guide to Washington D.C.'s Iconic Landmark The National Mall is an iconic destination in the heart of Washington D.C., offering a wealth of attractions, landmarks, and activities for visitors. With its rich history and cultural significance, it's essential to have a reliable map to navigate this vast area. Our printable map of the National Mall provides a detailed illustration of the park, including its various sections, monuments, and points of interest. This beautifully illustrated map features 22 colored illustrations of landmark buildings and memorials that everyone should visit and enjoy. From the iconic Washington Monument to the World War II Memorial, our map helps you plan your itinerary and make the most of your visit to the National Mall. You can also find information on public transportation, food options, restrooms, and other essential services throughout the park. For students, this simple National Mall map activity introduces the layout and function of the famous park in Washington D.C., providing a valuable learning resource for those looking to explore its history and significance. In addition to our printable map, we've curated a list of the best 10 maps of Washington D.C. that you can print out or save on your smartphone for easy reference throughout your visit. Whether you're interested in history, culture, or simply exploring new sights and sounds, the National Mall has something for everyone. So why wait? Download our printable map today and start planning your unforgettable adventure! Printable templates offer numerous benefits for daily life and work, including increased productivity, improved organization, and enhanced professionalism. These templates can be particularly helpful for tasks that require repetitive formatting, such as creating invoices or reports. Additionally, they can aid in staying organized by providing a structured format for information, which is especially useful for tasks like creating schedules or budgets. Printable templates can also help create professional-looking documents and materials, even for those without extensive design experience. This makes them an ideal choice for small businesses or individuals looking to establish a professional image. Furthermore, printable templates are often free or low-cost, making them a budget-friendly option for both individuals and businesses. These versatile tools have various applications across different fields, including business, education, personal organization, and creative projects. For instance, they can be used to create business cards, brochures, invoices, reports, lesson plans, worksheets, schedules, to-do lists, budgets, art, crafts, and more. To maximize the potential of printable templates, it is essential to choose a template that suits your needs, customize it to fit your individual requirements, use high-quality images, proofread and edit carefully, and make the most of their customizable features. By understanding the benefits and applications of printable templates, you can streamline your workflow, boost productivity, and achieve your goals more effectively. As an added resource, this page provides 13 free National Mall maps for viewing or downloading, along with external affiliate links that help support the site's costs and maintain its ad-free status. These links are easily identifiable due to their shaded backgrounds. Download your free National Mall map, featuring interactive maps, lodging options, and more to plan your visit! Another resource for navigating the DC area is Destination DC, the official tourism bureau for Washington. You can request visitor information by clicking here. The National Mall Map is essential for exploring the historic center of Washington, D.C. The National Mall is a landscaped park in downtown Washington, covering 1.9 miles from the Capitol to the Lincoln Memorial. It features iconic monuments, memorials, and Smithsonian museums, attracting around 24 million visitors each year. This symbolic front yard hosts historical events and celebrations, making it a must-visit destination. To make the most of your trip, plan your day with the help of this map, which provides information on walking trails, water fountains, and restrooms. A typical visit to see major monuments takes 3-5 hours, while exploring all Smithsonian museums can take several days. The National Mall stretches approximately 2 miles from the Capitol Building to the Lincoln Memorial, with a full loop covering about 4 miles. There are 11 Smithsonian museums located directly on the National Mall, making it a hub for art, culture, and history. To download a printable version of the map, right-click on one of the links below and save the file. The documents come in PDF format, requiring Adobe Acrobat Reader for viewing. Visiting the National Mall and its iconic landmarks is a must when exploring Washington D.C. Spend another day soaking up the sights on the west side, where you can find the Lincoln Memorial among other monuments. To make the most of your visit, I recommend basing your itinerary around the Washington Monument - it's a convenient hub for navigating the National Mall. The National Mall itself is vast and packed with attractions that could fill an entire week. Here are some key highlights to consider: While not exclusively located on the National Mall, many nearby spots are only a few blocks away. The U.S. Capitol Building, a stunning structure on the east side, is home to both the Senate and House of Representatives. Take a stroll around this impressive building, taking in its grandeur from multiple angles. Don't miss the reflective pool on the west side - it offers breathtaking views. One of the National Mall's lesser-known gems is the United States Botanic Garden, boasting over 28,000 square feet of lush gardens and plant life. Plus, admission is free (just check their website for hours). Native American history buffs will love the National Museum of the American Indian, located near the U.S. Capitol. This museum showcases an impressive collection of Native American artifacts and exhibits. For families or aviation enthusiasts, the Smithsonian National Air and Space Museum is a must-visit. The Dwight D. Eisenhower Memorial honors the 34th President with striking stone pillars and a metal tapestry. The Hirshhorn Museum, situated between the Air and Space Museum and the Smithsonian Castle, features an impressive collection of modern art. Lastly, don't miss the opportunity to visit the American History Museum, home to countless artifacts that bring America's past to life. The Smithsonian National Museum of American History is located at the monument, showcasing US heritage through cultural, scientific, military, and political collections. The original Star-Spangled Banner is a standout exhibit. The Smithsonian National Museum of Natural History, situated near the National Mall, features dinosaur exhibits and rare gems like the Hope Diamond. The Smithsonian Castle, between the Capitol and Washington Monument, hosts art exhibits and has a beautiful Enid A. Haupt garden for magnolia blooms. The newly opened Smithsonian Arts + Industries Building offers unique exhibitions and a large X-shaped layout worth exploring. The Freer/Sackler Gallery, located near the castle, features Asian and American works of art. The United States Holocaust Memorial Museum and the National Museum of African American History and Culture are also notable additions to the National Mall. The Washington Monument stands tall at 555 feet high, honoring George Washington. Visitors can enjoy its grounds day or night and take in views of the U.S. Capitol, Jefferson Memorial, White House, and Lincoln Memorial from the base. To the west lies the World War II Memorial, featuring a large fountain, pillars representing US states and territories, and arches. Constitution Gardens, located north of the Lincoln Memorial Reflecting Pool, offers a peaceful atmosphere with a pond, island, and greenery. Water reflects either the Lincoln Memorial or Washington Monument, depending on your perspective. Many gather around the Reflecting Pool during events at the Lincoln Memorial, such as MLK Jr's iconic I have a dream speech. The Floral Library, with over 90 flower beds, is close to the Washington Monument and makes for a great spot to snap a photo of a blooming garden. It's also a popular destination during DC's spring tulip bloom. The MLK Jr Memorial pays tribute to Martin Luther King, Jr., featuring his famous I have a dream speech quote. Out of the mountain of despair, a stone of hope. The Franklin Delano Roosevelt Memorial honors the 32nd President and is accessible around the clock. The Jefferson Memorial, situated on the south side of the Tidal Basin, overlooks the Washington Monument. The Korean War Veterans Memorial commemorates the bravery and valor of those who fought in the war. The National Park Service Stables, established in 2023, are home to beautiful horses seen in ceremonies around town. You can get up close to these amazing animals and watch the rangers take care of them. The District of Columbia War Memorial honors local heroes who died in World War I and those who served, standing out as a unique circular, domed temple on the National Mall. The Old Post Office Museum & Tower offers 360-degree views of DC for free. The Vietnam War Memorial honors victims with an inscribed wall featuring 58,318 names, often visited with flowers and respectful offerings. The Vietnam Womens Memorial serves as a powerful symbol of the women who fought in the war, depicting three women caring for a wounded soldier. Unveiled in 1993, it honors the nurses, aid workers, and others who served during the conflict. The Lincoln Memorial, situated at the west end of the National Mall, features massive columns, a large statue of President Abraham Lincoln, and stunning views of the Reflecting Pool. Just west of the memorial lies a staircase leading to the Potomac River, offering a view of the Arlington Memorial Bridge. The White House, the official residence of the US president, is located near the Washington Monument. While it requires tickets for entry, visitors can still admire its exterior from the north or south sides. When visiting the National Mall, spring and fall are the best times to avoid crowds while enjoying pleasant weather. In the spring, you can catch the peak bloom of cherry blossoms as the weather warms up. Fall foliage is stunning, with fewer crowds and milder temperatures than summer. Some recommended photography gear for capturing the monuments includes telephoto lenses for compressed shots and wide-angle lenses for grand vistas. For a quick snack, food trucks on the mall offer a variety of options. However, for a more authentic DC experience, try dining near Chinatown at places like Oyamel for Mexican cuisine, Rasika for upscale Indian fare, Immigrant Food for bowls and sandwiches, Old Ebbitt Grill for a touristy classic, or Teatism for tea and bento boxes. Their salty oat cookie is a popular option. If you don't want to leave the Mall, there are good cafes in both the National Museum of African American History and Culture and the National Museum of the American Indian. The National Mall is a big grassy area with many monuments and museums in Washington D.C. Its like America's front yard. The National Mall is 2 miles long and 0.3 miles wide. Pierre L'Enfant designed it. He wanted a grand avenue with trees and gardens. That's how the Mall got its name. You can bring your pet, but they must be on a leash. There are no charge to visit The National Mall is open all day and night.

Map of washington dc mall area. Washington dc capitol mall map. Washington dc mall walking tour map. Washington dc mall map attractions. Washington dc mall map printable. Washington dc shopping mall map. National mall washington dc walking map. Map of washington dc mall and museums. Washington dc national mall map pdf. Washington dc national mall map. Google maps washington dc mall. Parking national mall washington dc map. Washington dc mall map pdf. Map of national mall washington dc printable. Walking map of washington dc mall.