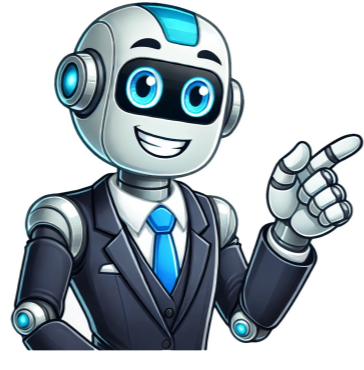


I'm not a bot



Lysaght purlins and girts user manual

Given text is a collection of product and technical documentation from Lysaght, an Australian steel manufacturing company. It includes various worksections, design guides, technical bulletins, case studies, and marketing materials for their products such as purlins, roofing, cladding, and facade panels. Lysaght Living Installation Guides and Resources ===== This comprehensive guide provides a list of installation guides, resources, and product information for Lysaght Living products in various regions across Australia. ### Installation Guides * Pitched Gable Hip and Dutch Installation Guide * Pitched Portal Frame Installation Guide * Skillion Attached with Receiver Channel Installation Guide * Skillion Installation Guide (QLD, NSW, ACT, VIC, TAS) * Lysaght Living Maintenance & Structural Performance Warranty * Patios, Carports and Verandahs Design Guide ### Regional Guides * LYSAGHT LIVING - NSW - Design Guide * LYSAGHT LIVING - SA - Design Guide * LYSAGHT LIVING - VIC TAS - Design Guide ### Brochures and Catalogues * Lysaght Living Hero Brochure * WEB * LYSAGHT LOKLIP End/Expansion Joint Solution for KLIP-LOK CLASSIC 700 * LYSAGHT LONGLINE 305 WA Cyclonic Areas Addendum * LYSAGHT MINI ORB WA Design and Installation Guide * LYSAGHT NCCB - NCC Compliance Bulletin - FACADES * LYSAGHT NCCB01 - NCC Compliance Bulletin - Roofing and Walling * LYSAGHT NCCB02 - NCC Compliance Bulletin - ZENITH Cladding range * LYSAGHT NCCB03 - NCC Compliance Bulletin - Heritage Range * LYSAGHT NCCB04 - NCC Compliance Bulletin - Rainwater Goods * LYSAGHT NCCB05 - NCC Compliance Bulletin - Bondek * LYSAGHT NCCB06 - NCC Compliance Bulletin - Purlins * LYSAGHT NCCB07 - NCC Compliance Bulletin - Fencing and Screening * LYSAGHT NCCB09 - NCC Compliance Bulletin - TOPSPAN Battens * LYSAGHT NOVALINE Fascia Cover Design & Installation Guide * LYSAGHT NOVALINE Fascia System Installation Guide * LYSAGHT Pop Up Penetration Diffuser Kit Installation Guide * LYSAGHT Pop Up Penetration Information Flyer * LYSAGHT Pop Up Penetration Installation Guide * LYSAGHT SLATSCREEN and LYSAGHT LOUVRESCREEN Installation Guide * LYSAGHT SPANDEK 2 Degree Roof Pitch Guide * LYSAGHT SPANDEK Design and Installation Guide * LYSAGHT SUPABRIDGE Design and Installation Manual * LYSAGHT SUPABRIDGE Design and Installation Manual - WA * LYSAGHT SUPAPURLINS & SUPACEES Design & Installation Guide * LYSAGHT SUPATHERMIC-11 Data Sheet * LYSAGHT TOPSPAN 40 TS40 MK 3 Product Data Sheet * LYSAGHT TOPSPAN Design and Installation Guide * LYSAGHT TOPSPAN Quick Selection Guide * LYSAGHT TRIM-KLIP Cyclonic Areas Addendum * LYSAGHT TRIM-KLIP Design and Installation Guide * LYSAGHT TRIMDEK Design and Installation Guide * LYSAGHT WEATHERLINE Design & Installation Guide * LYSAGHT ZENITH Range Product Category Brochure * LYSAGHT ZENITH Roofing and Walling Design & Installation Guide The list includes various brochures, manuals, and guides related to LYSAGHT products and services. The documents cover topics such as commercial walling solutions, condensation control, cyclonic area construction, fencing and screening, gutter overflow solutions, and purlins design and installation. Additionally, there are product advisory bulletins (PABs) that provide guidance on various aspects of LYSAGHT products, including wind classification, metal and timber compatibility, maximum roof lengths for drainage, fasteners, oil canning, flammability, and condensation management. Some of the brochures and guides are specific to certain regions in Australia, such as New South Wales, Queensland, Victoria, Tasmania, South Australia, and Western Australia. Other documents provide design and installation guidelines for various LYSAGHT products, including fences, gates, and roofing solutions. Overall, the list appears to be a comprehensive collection of resources related to LYSAGHT's commercial and residential products and services in the Australian market. LYSAGHT provides a range of technical guides and manuals for various roofing and wall installation products, including the Spacer Insert Guide for different regions in Australia, as well as design and installation instructions for structural products and purlins. Additionally, there are credit account applications available from The Roofing Centre and Lysaght.

[How to reinforce purlins.](#) [How to support a purlin.](#) [What are girts and purlins.](#) [Lysaght purlin installation guide.](#) [Lysaght purlins.](#) [Lysaght purlin catalogue pdf.](#) [Lysaght.](#)