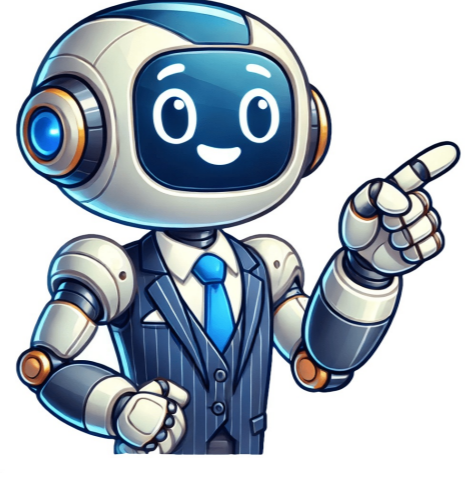


[Click Here](#)



LSU Tigers softball team, 2016

LSU Tigers softball team, 2015

LSU Tigers softball team, 2014

LSU Tigers softball team, 2013

LSU Tigers softball team, 2012

LSU Tigers softball team, 2011

LSU Tigers softball team, 2010

LSU Tigers softball team, 2009

LSU Tigers softball team, 2008

LSU Tigers softball team, 2007

LSU Tigers softball team, 2006

LSU Tigers softball team, 2005

LSU Tigers softball team, 2004

LSU Tigers softball team, 2003

LSU Tigers softball team, 2002

LSU Tigers softball team, 2001

LSU Tigers softball team, 2000

LSU Tigers softball team, 1999

LSU Tigers softball team, 1998

LSU Tigers softball team, 1997

LSU Tigers softball team, 1996

LSU Tigers softball team, 1995

LSU Tigers softball team, 1994

LSU Tigers softball team, 1993

LSU Tigers softball team, 1992

LSU Tigers softball team, 1991

LSU Tigers softball team, 1990

LSU Tigers softball team, 1989

LSU Tigers softball team, 1988

LSU Tigers softball team, 1987

LSU Tigers softball team, 1986

LSU Tigers softball team, 1985

LSU Tigers softball team, 1984

LSU Tigers softball team, 1983

LSU Tigers softball team, 1982

LSU Tigers softball team, 1981

LSU Tigers softball team, 1980

LSU Tigers softball team, 1979

LSU Tigers softball team, 1978

LSU Tigers softball team, 1977

LSU Tigers softball team, 1976

LSU Tigers softball team, 1975

LSU Tigers softball team, 1974

LSU Tigers softball team, 1973

LSU Tigers softball team, 1972

LSU Tigers softball team, 1971

LSU Tigers softball team, 1970

LSU Tigers softball team, 1969

LSU Tigers softball team, 1968

LSU Tigers softball team, 1967

LSU Tigers softball team, 1966

LSU Tigers softball team, 1965

LSU Tigers softball team, 1964

LSU Tigers softball team, 1963

LSU Tigers softball team, 1962

LSU Tigers softball team, 1961

LSU Tigers softball team, 1960

LSU Tigers softball team, 1959

LSU Tigers softball team, 1958

LSU Tigers softball team, 1957

LSU Tigers softball team, 1956

LSU Tigers softball team, 1955

LSU Tigers softball team, 1954

LSU Tigers softball team, 1953

LSU Tigers softball team, 1952

LSU Tigers softball team, 1951

LSU Tigers softball team, 1950

LSU Tigers softball team, 1949

LSU Tigers softball team, 1948

LSU Tigers softball team, 1947

LSU Tigers softball team, 1946

LSU Tigers softball team, 1945

LSU Tigers softball team, 1944

LSU Tigers softball team, 1943

LSU Tigers softball team, 1942

LSU Tigers softball team, 1941

LSU Tigers softball team, 1940

LSU Tigers softball team, 1939

LSU Tigers softball team, 1938

LSU Tigers softball team, 1937

LSU Tigers softball team, 1936

LSU Tigers softball team, 1935

LSU Tigers softball team, 1934

LSU Tigers softball team, 1933

LSU Tigers softball team, 1932

LSU Tigers softball team, 1931

LSU Tigers softball team, 1930

LSU Tigers softball team, 1929

LSU Tigers softball team, 1928

LSU Tigers softball team, 1927

LSU Tigers softball team, 1926

LSU Tigers softball team, 1925

LSU Tigers softball team, 1924

LSU Tigers softball team, 1923

LSU Tigers softball team, 1922

LSU Tigers softball team, 1921

LSU Tigers softball team, 1920

LSU Tigers softball team, 1919

LSU Tigers softball team, 1918

LSU Tigers softball team, 1917

LSU Tigers softball team, 1916

LSU Tigers softball team, 1915

LSU Tigers softball team, 1914

LSU Tigers softball team, 1913

LSU Tigers softball team, 1912

LSU Tigers softball team, 1911

LSU Tigers softball team, 1910

LSU Tigers softball team, 1909

LSU Tigers softball team, 1908

LSU Tigers softball team, 1907

LSU Tigers softball team, 1906

LSU Tigers softball team, 1905

LSU Tigers softball team, 1904

LSU Tigers softball team, 1903

LSU Tigers softball team, 1902

LSU Tigers softball team, 1901

LSU Tigers softball team, 1900

LSU Tigers softball team, 1899

LSU Tigers softball team, 1898

LSU Tigers softball team, 1897

LSU Tigers softball team, 1896

LSU Tigers softball team, 1895

LSU Tigers softball team, 1894

LSU Tigers softball team, 1893

LSU Tigers softball team, 1892

LSU Tigers softball team, 1891

LSU Tigers softball team, 1890

LSU Tigers softball team, 1889

LSU Tigers softball team, 1888

LSU Tigers softball team, 1887

LSU Tigers softball team, 1886

LSU Tigers softball team, 1885

LSU Tigers softball team, 1884

LSU Tigers softball team, 1883

LSU Tigers softball team, 1882

LSU Tigers softball team, 1881

LSU Tigers softball team, 1880

LSU Tigers softball team, 1879

LSU Tigers softball team, 1878

LSU Tigers softball team, 1877

LSU Tigers softball team, 1876

LSU Tigers softball team, 1875

LSU Tigers softball team, 1874

LSU Tigers softball team, 1873

LSU Tigers softball team, 1872

LSU Tigers softball team, 1871

LSU Tigers softball team, 1870

LSU Tigers softball team, 1869

LSU Tigers softball team, 1868

LSU Tigers softball team, 1867

LSU Tigers softball team, 1866

LSU Tigers softball team, 1865

LSU Tigers softball team, 1864

LSU Tigers softball team, 1863

LSU Tigers softball team, 1862

LSU Tigers softball team, 1861

LSU Tigers softball team, 1860

LSU Tigers softball team, 1859

LSU Tigers softball team, 1858

LSU Tigers softball team, 1857

LSU Tigers softball team, 1856

LSU Tigers softball team, 1855

LSU Tigers softball team, 1854

LSU Tigers softball team, 1853

LSU Tigers softball team, 1852

LSU Tigers softball team, 1851

LSU Tigers softball team, 1850

LSU Tigers softball team, 1849

LSU Tigers softball team, 1848

LSU Tigers softball team, 1847

LSU Tigers softball team, 1846

LSU Tigers softball team, 1845

LSU Tigers softball team, 1844

LSU Tigers softball team, 1843

LSU Tigers softball team, 1842

LSU Tigers softball team, 1841

LSU Tigers softball team, 1840

LSU Tigers softball team, 1839

LSU Tigers softball team, 1838

LSU Tigers softball team, 1837

LSU Tigers softball team, 1836

LSU Tigers softball team, 1835

LSU Tigers softball team, 1834

LSU Tigers softball team, 1833

LSU Tigers softball team, 1832

LSU Tigers softball team, 1831

LSU Tigers softball team, 1830

LSU Tigers softball team, 1829

LSU Tigers softball team, 1828

LSU Tigers softball team, 1827

LSU Tigers softball team, 1826

LSU Tigers softball team, 1825

LSU Tigers softball team, 1824

LSU Tigers softball team, 1823

LSU Tigers softball team, 1822

LSU Tigers softball team, 1821

LSU Tigers softball team, 1820

Do you require assistance with purchasing, selling, or accessing your tickets? Our ticket sales team is available to support you today!
The Tiger Classic Purple & Gold Challenge features a record of games played against Division I opponents only. Streaks include all games played. All times are in Eastern Standard Time.The top 10 teams are listed below, along with their RPI and ELO rankings:1. #15 Virginia Tech - RPI: 182. #12 South Carolina - RPI: 93. #16 Alabama - RPI: 194. #5 Florida - RPI: 45. #3 Arkansas - RPI: 6The schedule for the Tiger Classic and Purple & Gold Challenge is as follows:1. Charlotte (30-27) - RPI: 542. Central Arkansas (28-27) - RPI: 663. Northwestern (30-20-1) - RPI: 524. LSU Invitational (Penn State, Southern Miss, Nicholls)5. Judi Garman Classic (Cal State Fullerton, Notre Dame, Weber State)The Tiger Classic schedule includes:1. Louisiana (29-25) - RPI: 602. South Alabama (20-31) - RPI: 1643. Minnesota (20-30) - RPI: 1104. #12 South Carolina (44-17) - RPI: 95. #16 Alabama (40-23) - RPI: 19The Purple & Gold Challenge schedule includes:1. Northwestern (30-20-1) - RPI: 522. LSU Invitational (Penn State, Southern Miss, Nicholls)3. Judi Garman Classic (Cal State Fullerton, Notre Dame, Weber State)LSU softbal earned the No. 10 seed in the 2025 NCAA Tournament and the right to host a regional. The Tigers will open play against Southeastern Louisiana on Friday.The Baton Rouge regional is considered one of the most challenging in the field, featuring Nebraska, Big East Tournament champion UConn, and Southeastern Louisiana. Following a quarterfinal exit in the SEC Tournament, LSU will strive to extend its season from its home field against a familiar opponent. Earlier this season, Southeastern Louisiana came close to defeating LSU, but the Tigers managed to complete a comeback and secure a walk-off win 3-2 in Baton Rouge. Teri Edwards scored the winning run on a sacrifice fly in the bottom of the seventh inning, while Sydney Berzon's strong pitching earned her the win in a complete-game effort. After being knocked out of the conference tournament by reigning national champions Oklahoma with a 4-1 loss, LSU finished the season with a 41-14 record and fourth in RPI. The NCAA regionals are four-team, double-elimination tournaments, and if LSU wins every game, the regional will conclude in six games. However, if the field is competitive, it may take seven games to determine who advances. UConn and Nebraska will start the action at 2 p.m. CT on Friday, while LSU will begin its NCAA Tournament journey against Southeastern Louisiana at 4:30 p.m. CT. The winners of games 1 and 2 will meet at noon on Saturday. This year marks LSU's 26th appearance in the NCAA Tournament and its second consecutive tournament as a host, with a 65-31 record in the regional round under coach Beth Torina. The Tigers have made the College World Series four times, including three consecutive appearances from 2015-17, and won their three regional games in Baton Rouge last year to advance to the super regional against Stanford. LSU Tigers Softball Team History
LSU Tigers softball team represents Louisiana State University in NCAA Division I college softball. The team plays home games in Tiger Park and is currently coached by Beth Torina. LSU has won nine Western Division titles, five regular season SEC championships, and five SEC tournament championships.LSU Tigers have a long history of success in softball, with notable achievements including SEC Championships, NCAA Regionals appearances, and Women's College World Series wins. Notably, the team has been seeded as high as 9th nationally several times since 2005. The program boasts numerous award winners, such as Kristin Schmidt (Women's College World Series MVP) and Killian Roessner (NFCA Catcher of the Year). Other standout players include Ashlee Ducote (SEC Player of the Year), Britni Sneed (SEC Pitcher of the Year), and Rachele Fico (SEC Freshman of the Year). The team has also had its share of All-Americans, including Jodi Otten, Tara Ashbill, Trena Peel, LaDonia Hughes, Leslie Klein, Kirsten Shortridge, Brittany Mack, AJ Andrews, Savannah Jaquish, Bianca Bell, and Carley Hoover. With a total record of 1,363-499-1 (732) and 487-254-1 (657), the LSU Tigers are an accomplished softball program with a rich history.The LSU Tigers softball team has had several notable players, including Amanda Sanchez, who was named to the 1st Team as a 3B in 2019, and Shelbi Sunsiari, who was named to the 2nd Team as a UT/P in 2019. The team plays its home games at Tiger Park, which opened in 2009 and has a seating capacity of 1,289 people. The stadium also features an outfield berm, known as the Tiger Park Terrace, that can accommodate an additional 1,200 fans. Prior to 2009, the team played at the original Tiger Park, which was located on the campus of Louisiana State University and had a seating capacity of 1,000 people. The original stadium hosted several NCAA Regionals and the 2008 SEC softball tournament before being closed after the 2008 season. The team has had several head coaches, including Carol Smith, Cathy Compton, Glenn Moore, Yvette Girouard, and Beth Torina, who has been the head coach since 2012. The team has a strong record, with an overall record of 358-153 under Torina's leadership. The LSU Strength and Conditioning facility is also an important part of the team's training, featuring a 10,000-square foot weight room with state-of-the-art equipment. The facility includes 28 multi-purpose power stations, 36 selectorized machines, and 10 dumbbell stations, as well as a plyometric specific area and assorted speed and agility equipment. The team is part of the LSU Tigers athletic program, which uses the nickname "Lady Tigers" only in sports that have both men's and women's teams. However, since LSU only sponsors women's teams in gymnastics, soccer, softball, and volleyball, these teams are referred to as the "Tigers".The LSU Tigers softball team employs a similar strategy to achieve success. According to various sources, including lsupsports.net and ncaa.org, the team has had notable achievements, such as sweeping Arkansas with a 9-1 win and having players named MVP and All-Tournament Team. The team's strength and conditioning program is also highlighted, with resources available on lsupsports.net and biggerfasterstronger.com. In other news, an art piece featuring Kate Moss was showcased at the Alexander McQueen runway show, utilizing a 19th-century theater technique called Pepper's ghost to create an illusion of the model dancing in a white chiffon gown. This illusion has been subject to academic analysis and appeared in exhibitions of McQueen's designs. Additionally, various interesting facts are shared, including the story of Helen Kendall, a Canadian who received the Royal Red Cross for her service in World War I, and the first UK private toll road in a century, which operated for 14 weeks in 2014. Other notable mentions include Remedios Varo's sculpture Homo rodans, accompanied by a satirical anthropological manuscript, and Earl Ohlgren's injury during an NFL exhibition game. Wikipedia continues to grow with over 115,000 active editors and 7 million articles in English, thanks to the contributions of its users.Luvsannamsrain Oyun-Erdene, Mongolia's Prime Minister, steps down amid protests. The Netherlands holds an early election after its government collapses. Lee Jae-myung becomes South Korea's president. In cricket, Royal Challengers Bengaluru wins the Indian Premier League. Karol Nawrocki is elected Poland's president.Recent deaths include Edgar Lungu, Pierre Nora, David Cordier, Jonathan Joss, John Brenkus, and John Thrasher.The Book of Common Prayer becomes law in England, introducing a Protestant liturgy to the Church.American colonists, led by Abraham Whipple, attack and burn the British schooner Gaspee.Australian aviator Charles Kingsford Smith lands the Southern Cross in Brisbane, completing the first transpacific flight.The Kumanovo Agreement brings an end to the Kosovo War.Sarah Rapelje is born, and Filipino girl group BINI debuts with 44 awards from 83 nominations.In other news:
Lestes dryas, a species of damselfly, has been found in various parts of Eurasia and North America.Wikipedia is a free online encyclopedia written by volunteer editors and hosted by the Wikimedia Foundation, a non-profit organization that also hosts other volunteer projects. It features over 1 million articles in multiple languages, including Arabic, French, German, Italian, and many others.The website has several sections, including a central hub for editors with resources and links, a forum for discussions about Wikipedia itself, and a news section with sources of information about the broader Wikimedia movement.Wikipedia is available in over 300 languages, with some of the largest Wikipedias listed below. The main language edition is written in English, but many other languages are also supported.1549 (MDXLIX) was a year marked by turmoil in Europe, particularly in the Kingdom of England, where a series of rebellions took place.Kett's Rebellion breaks out in East Anglia and Oxfordshire against fences and enclosures put up by wealthy landowners. In July, General Miyoshi Nagayoshi attacks the Echugi Castle in Japan's Settsu Province, killing several generals and forcing Governor Hosokawa to flee.Thomas Cranmer delivers a crucial sermon at St Paul's Cathedral defending the use of The Book of Common Prayer.Francis Xavier arrives in Japan but is not allowed on shore for three weeks. Kett's rebels capture Norwich and defeat Royal Army leaders William Parr and Marquess of Northampton. England declares war with France. The Prayer Book Rebellion is quashed at Sampford Courtenay, while Kett's Rebellion ends at Dussindale. The Council of Trent is prorogued indefinitely, and the English Army abandons Haddington. Francis Xavier meets Shimazu Takahisa in Japan. Nicholas Wotton replaces Sir Thomas Smith as Secretary of State, and Edward Seymour is arrested on charges of ambition and malfeasance.Catherine of Habsburg marries Francesco III Gonzaga but dies shortly after. Charles V proclaims the Pragmatic Sanction, declaring the Seventeen Provinces inseparable.January 26 Jakob Ebert, German theologian January 26 Francesco Bassano the Younger, Italian painter February 3 Louis of Valois, French prince February 4 Eustache Du Caurroy, French composer February 15 Barmín X, Duke of Pomerania February 20 Francesco Maria II della Rovere, Duke of Urbino March 10 Francis Solanus, Spanish missionary and saint March 11 Hendrik Laurenzsoon Spiegel, Dutch writer April 5 Françoise d'Orlans-Longueville, French princess April 13 Count Juraj IV Zrinski of Croatia June 15 Elizabeth Knollys, English noblewoman July 2 Duchess Sabine of Wrttemberg July 5 Francesco Maria del Monte, Italian Catholic cardinal July 12 Edward Manners, 3rd Earl of Rutland July 20 Pierre de Larivey, Italian-born French dramatist July 30 Ferdinando I de' Medici, Grand Duke of Tuscany August 2 Mikołaj Krzysztof "the Orphan" Radziwiłł August 10 Catherine of Brandenburg-Kstirn September 1 Charles Philippe de Cro, Marquis d'Havr November 5 Philippe de Mornay, French writer November 30 Sir Henry Savile, English educator His list includes notable individuals who died in 1549. These include:
* Marek Sobieski, a Polish nobleman
* Ogawa Suketada, a Japanese warlord
* Pope Paul III, who served from 1534 to 1549Additionally, notable figures born this year include:
* Elia Levita, a German Yiddish writer
* Il Sodoma, an Italian painter
* Mingyi Swe, the Burmese viceroy of Toungoo
* Lorenzo Cybo, an Italian condottiero
* Thomas Seymour, 1st Baron Seymour of Sudley, an English politician and diplomat
* Veit Dietrich, a German theologian, writer, and reformer
* Andrew Boorde, an English traveler
* Matsudaira Hirotada, a Japanese daimyo
* Christine of Saxony, a German noblewoman
* Ralph Neville, 4th Earl of Westmorland, an English earl
* Mara de Toledo, Vicerine and regent of the Spanish Colony of Santo Domingo
* Luis Cncer, a Spanish Dominican priest, missionary, martyr, and servant of God
* Edmund Sheffield, 1st Baron Sheffield, an English baron
* Otto I, Duke of Brunswick-Harburg, Prince of Lneburg, and Baron of Harburg
* Anthony Denny, confidant of Henry VIII of England
* Benedetto Accolti the Younger, an Italian Catholic cardinal
* Marie d'Albret, Countess of Rethel, a French noblewoman
* Henry Somerset, 2nd Earl of Worcester, an English nobleman
* Robert Kett, an English rebel who was executed
* Marguerite de Navarre, queen of Henry II of NavarreNote: The exact dates of birth and death for some individuals are unknown.The 15th century spanned from 1401 to 1500, a time marked by significant technological, social, and cultural advancements in Europe. The period encompasses parts of the Late Middle Ages, the Early Renaissance, and the early modern era. Key events include the Ottoman conquest of Constantinople and the fall of the Byzantine Empire, which some historians consider the end of the Middle Ages. Other notable occurrences include the surrender of Granada by Muhammad XII to Ferdinand and Isabella, and Christopher Columbus's arrival in the Americas in 1492.Sources:Kett, Robert (c.14921549). Oxford Dictionary of National Biography.Akgunduz, Ahmed. Ozturk, Said (2011). Ottoman History. Misperceptions and Truths.Lincoln Cathedral, Leuther, Hans (1957). "Dietrich, Veit". Neue Deutsche Biographie. Berlin: De Gruyter. ISBN 9783432831111. Archived from the original on 2016-09-16. Retrieved 2016-09-16.{{cite book|url=http://www.encyclopedia-britannica.com/EBroot/60/q/qt/144769.html|title=Veit Dietrich|publisher=Encyclopedia Britannica|year=2016}}The late Middle Ages were marked by significant events that shaped the modern world. In Italy, key architectural developments and modern financial systems were established. The Hundred Years' War ended with a French victory over England, leading to power struggles for the English throne. This conflict led to the Wars of the Roses and ultimately the rise of the Tudor dynasty.The fall of Constantinople to Muslim Ottomans marked the end of the Byzantine Empire and had far-reaching consequences, including the migration of Greek scholars to Italy. Johannes Gutenberg's printing press innovation played a crucial role in the development of the Renaissance.The Western Schism within the Catholic Church led to divisions that contributed to the Protestant Reformation. The Christian Reconquista dissolved Islamic rule in Spain, while European traders sought new routes to India through the Bengal Sultanate and Ottoman Empire. This led to explorers like Christopher Columbus reaching the Americas.In Asia, the Timurid Empire collapsed, and the Afghan Pashtun Lodi dynasty took control of the Delhi Sultanate. The Ming dynasty reached its peak under the Yongle Emperor's rule. In Africa, Islam spread, leading to the decline of Christian kingdoms in Nubia. The Mali Empire teetered on collapse as the Songhai Empire rose to power.In the Americas, both the Aztec and Inca Empires reached their peak influence before European colonization began with Christopher Columbus' voyages.In 1402, Timur defeated Bayezid I, while the Sultanate of Malacca was founded by Parameswara, marking the beginning of a new era in the region. The same year, the Spanish Empire began to take shape with the settlement of the Canary Islands. Meanwhile, the Ottoman Interregnum, a civil war between the sons of Bayezid I, lasted from 1403 to 1413. The Yongle Emperor moved China's capital from Nanjing to Beijing in 1403, and the Regreg War, a civil war in Majapahit, took place from 1404 to 1406. In 1405, the Sultanate of Sulu was established by Sharif ul-Hshim, and Admiral Zheng He of China embarked on the Ming treasure voyages, sailing through the Indian Ocean to spread China's influence. The first voyage visited Java, Palembang, Malacca, Aru, Samudera, and Lamri, ending in 1407. The last recorded event in the Norse settlements of Greenland was a wedding in Hvalsey in 1408. The Battle of Grunwald in 1410 marked the downfall of the Teutonic Knights, while the last Welsh war of independence, led by Owain Glyndr, took place from 1410 to 1415. In 1414, Khizr Khan founded the Sayyid dynasty in Delhi, and Henry the Navigator led the conquest of Ceuta, marking the beginning of the Portuguese Empire. The Battle of Agincourt was fought between England and France in 1415, and Jan Hus was burned at the stake as a heretic. A large goodwill mission from Sulu visited China in 1417, and the Hussite Wars in Bohemia lasted from 1419 to 1433. Joan of Arc influenced the outcome of the Hundred Years' War, and the construction of the Chinese Forbidden City was completed in 1420. The Ife Empire collapsed in Sub-saharan Africa, and James I returned to Scotland after being held hostage since 1406. Deva Raya II succeeded his father as monarch of the Vijayanagara Empire in 1424, and the Catholic University of Leuven was founded by Pope Martin V in 1425. The reign of Itzcoatl began in Tenochtitlan in 1427, and Joan of Arc ended the Siege of Orlans in 1429, turning the tide of the Hundred Years' War. Queen Suhita succeeded her father as ruler of Majapahit, and Rajah Lontok and Dayang Kalangitan became co-regent rulers of Tondo in 1430. Pretrial investigations for Joan of Arc began on January 9, 1431.Major historical events took place across various regions in the mid-15th century. In Europe, Pope Eugene IV succeeded Martin V as the 207th pope on March 3rd. Notably, the trial of Joan of Arc began on March 26th and ended with her execution by burning at the stake on May 30th.The Teutonic Knights and vitrigaila formed an alliance against Poland in June. The Battle of Inverlochy saw Donald Balloch defeating Royalists in September, while a peace treaty between Portugal and Castille was signed on October 30th. Henry VI of England was crowned King of France on December 16th.In Asia, the Catholics and Utraquists defeated the Tabornites at the Battle of Lipany in 1434, ending the Hussite Wars. The Inca Empire was founded by Pachacuti around the same time. Eton College was established