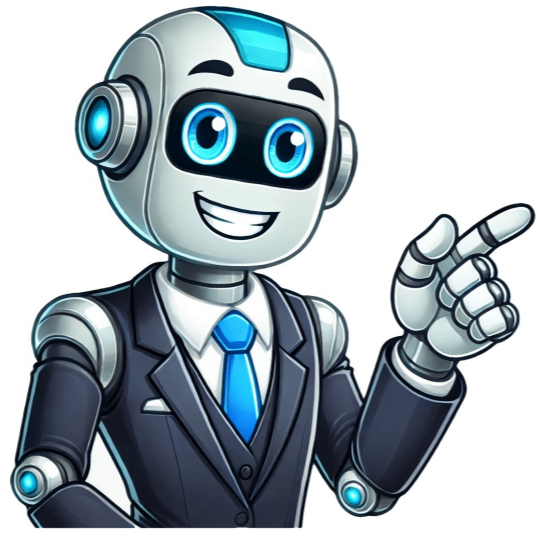


Click to verify















## Sorel boots size guide

To navigate through items, use your keyboard's up and down arrows. Confused about Sorel boots sizing? The truth is, the fit depends on the type and gender - it can be small or large. I've tried wearing different pairs and want to share my experience with you. So, let's get to the bottom of how Sorel Boots actually fit! Sorel boots generally run true to regular sneaker size but are slightly smaller than other renowned brands like Dr. Martens, Red Wing, Timberland, or Thursday. Some people find women's Sorel boots to be half a size small or large. On the contrary, popular items like Caribou and Tofino run half a size larger, while Conquest and Joan of Arctic come in 0.5 sizes smaller. To resolve this sizing issue, Sorel has developed a standard size chart with added half sizes, available on their official website. Here's Sorel's size catalog for men and women: And here's the size guide for toddlers, children, and youth: Looking for new men's boots that are both stylish and functional? We've rounded up some of our favorite waterproof options from Sorel, perfect for rain or shine. Don't miss out on these amazing deals - they won't last long! Sorel Madson Moc Toe Boot Now 50% off, features a suede upper, EVA midsole, and molded rubber outsole. Sorel Cheyenne Metro Hi Boot Combines sneaker and boot styles with microfleece lining and insulated feet for cold temperatures. Sorel Madson II Chukka Boot Offers everyday casual style with waterproof leather and suede upper. Sorel Mad Brick Six Boot Provides a rugged look while keeping rainy weather out, with a breathable mesh lining. Sorel Mac Hill Mid LTR Boot Combines sneaker and hiker styles with leather and suede, perfect for miles of comfort. To get the best fit from your Sorel boots, it's recommended to order in your most frequently worn shoe size. This ensures comfort during harsh winter weather conditions. For brands like Nike and Adidas, sticking with your true sneaker size is ideal, but for Red Wing or Timberland, ordering a half-size smaller may provide a better fit. Sorel boots are known for their affordability and ability to handle tough winters. When trying on boots, consider the length of your foot first using the provided sizing chart, which also helps determine standard UK and EU boot sizes. If you have wider feet, opt for an E or larger width size. Keep in mind that Sorel women's boots often run half-size small, so ordering up may be necessary if unsure. When buying Sorel boots, wear the same type of socks you'll be wearing with them most often to get an accurate fit. Try on the boots and walk around to ensure they feel comfortable and snug. If buying online, read the sizing information carefully and consider sizing up if unsure. Sorel boots are designed for cold weather, so they may feel looser than other boots due to thicker socks. However, if you're generally comfortable, that's all that matters. Sorel boots tend to run slightly small compared to other boot brands, but similar in size to sneaker brands. To determine your correct size, find your most common shoe size and order the same size for Sorel boots. If you typically wear Red Wing or Wolverine boots, consider sizing up by half a size. It's essential to ensure the boots don't feel too tight, as this can cause discomfort and even tingling in your feet or toes. Wear new boots indoors for a few hours before wearing them outdoors to check for any issues. Most Sorel boots have rubber uppers that won't stretch, but some with leather may stretch slightly over time. If you're unsure about the fit of your old favorite Sorel boots or need help purchasing a new pair, refer to Sorel's size chart below: Men's US EU UK Inches Centimeters \* Women's US EU UK Inches Centimeters The size charts provide a general guide for most Sorel boot types. Sorel boots are known for their roomy fits, but this can be a problem for people with wider feet or those who need more support. The company does not offer wide sizes, so customers who want to accommodate their larger feet may find it difficult to get a comfortable fit. However, Sorel's design allows for some flexibility around the calf area, which can help accommodate larger calves. Measuring the calf is an important step in determining whether a boot will fit comfortably. A standard measurement is around 14 inches for women and 16 inches for men, but this can vary depending on individual measurements. To get an accurate reading, it's best to use a non-elasticated string or shoelace to measure the circumference of the calf. When shopping for Sorel boots, customers have reported that they run large, about half a size larger than regular shoe sizes. This means that if you plan on wearing thick socks, it may not be necessary to order up a full size, but using the charts and trying on multiple sizes is still recommended. It's also worth noting that measuring your feet is an important step in getting a good fit. To do this, place a sheet of paper on a flat surface and use a ruler to draw a straight line along the edge. Then, have someone help you measure from the wall to the position of your longest toe, as marked by your heel. Overall, while Sorel boots may not be the best choice for people with very wide feet or those who need more support, they can still offer a comfortable and stylish option for many customers. How to Measure Your Feet for Sorel Boots To determine if your feet fit in Sorel boots, follow these steps: 1. Wear your thickest socks to ensure a more accurate measurement. 2. Stand on a flat surface with your weight evenly distributed on both feet. 3. Place a piece of paper on the floor and step onto it. 4. Mark the longest point where your foot touches the paper. If you can't pinch an inch above your toes or slide your finger behind your heel, your boots are too small. The pressure on the sides of your feet should be minimal. If there's noticeable pressure, consider using thinner socks or sizing up. When in doubt, measure your feet and consult a comprehensive size chart for your specific Sorel boot model. Slickdeals Coupons offers a wide range of products from top brands like Adidas, StubHub, and Kohl's. The site is frequently updated, ensuring that users can find the best deals whenever they're ready to shop. We provide trusted coupons that work every time, eliminating frustration caused by non-functional promo codes. Our team of deal experts thoroughly tests each code before it goes live, guaranteeing active and reliable discounts for online and in-store shopping. Shopping on Slickdeals Coupons is easy and free, with a user-friendly interface allowing users to quickly find working coupon codes. Users can browse their favorite stores or explore the top deals. The site's team of experts continually tests coupons daily to ensure a seamless experience every time you shop. We specialize in finding expert-verified codes and unbeatable deals for our users. With years of experience, our editors have developed a smooth user experience and provide valid promo codes. Make Slickdeals Coupons your go-to destination for all things deals, discounts, and savings. Bookmark us and come back before you shop to take advantage of the latest offers! Shop now and enjoy incredible discounts - men's shorts up to 85% off, women's pants up to 75% off, t-shirts and tanks up to 75% off, and gift cards from \$10.

[Sorel boots sizing reviews](#). [Sorel size chart](#). [Sorel toddler boots size guide](#). [Sorel boot size chart](#). [Sorel mac hill mid ltr wp](#). [Sorel boots women size guide](#). [Does sorel boots run big or small](#). [Sorel boots true to size](#). [Do sorel boots run true to size](#). [Do women's sorel boots run true to size](#).