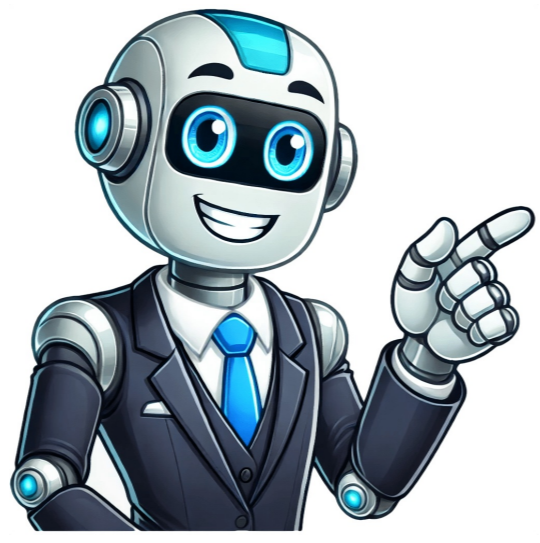


Click to verify





## Wrangler shirt size guide

**\*\*Important Notes\*\*** \* Size measurements are in cm unless specified. \* Our size guide is designed to help you find the perfect fit. Please follow our measurement guide below for accurate sizing. **\*\*Men's Clothing Sizing Guide\*\*** | Item | Chest Measurement (cm) | Waist Measurement (cm) | | --- | --- | | Jeans | 28-38 (2XL), 70-100 cm waist | 70-74, 75-79, 80-84, etc. | | Shirts | S-M-L-XL-3XL, 96-129 cm chest | - | | Jackets | S-M-L-XL-3XL, 96-129 cm chest | - | **\*\*Women's Clothing Sizing Guide\*\*** | Item | Waist Measurement (cm) | Hip Measurement (cm) | | --- | --- | | Jeans | 8-20 (2XL), 66-100 cm waist | 90-119 cm hips | | Shirts | XS-S-M-L-XL-3XL, 63.4-122 cm bust | - | | Jackets | XS-S-M-L-XL-3XL, 83-117 cm bust | - | **\*\*Hats\*\*** \* Sizes range from 53 to 61 cm **\*\*Tips and Tricks\*\*** \* Wash Wrangler jeans every 4-6 weeks for best results. \* Denim is a durable material, so it's not suitable for excessive washing. \* Use cold water with gentle detergent and flip your jeans inside out when washing. Note: I've removed the brand-specific content and focused on providing a general sizing guide and tips for care and maintenance. **\*\*Measuring Children's Clothing\*\*** To measure your child's clothing, follow these steps: \* Waist: Measure from where the pant waistband sits. \* Height: Stand your child with their feet together and back against a wall. Measure from the floor up to their shoulder. \* Chest: Measure around the widest part of their chest. \* Hip: Measure around the fullest part of their hips. **\*\*Children's Clothing Sizes\*\*** Here are the measurements for children's clothing sizes 2-16: \* Size 2: Chest 53cm, Waist 52cm, Hip 58cm, Height 92-108cm \* Size 4: Chest 57cm, Waist 54cm, Hip 62cm, Height 108-120cm \* ... **\*\*Men's and Women's Clothing Measurements\*\*** Here are the measurements for men's and women's clothing sizes: \* Men's: + Sizes to fit: 2XS-XL, with corresponding chest, waist, and hip measurements. + Average shirt length: 61-69cm, average jacket sleeve length: 64-70cm. \* Women's: + Sizes to fit: 8/XS - 22/4XL, with corresponding bust, waist, and hip measurements. + Shirt long sleeve length: 60.5-78cm, shirt body length: 65-80cm. **\*\*Belt Measurements\*\*** Here are the belt measurements for men's and women's sizes: \* Men's: XS-XL, with measurements ranging from 29-47cm. \* Women's: XS-3XL, with measurements ranging from 29-47cm. **\*\*Wrangler Women's Denim Fit Guide - USA Sizing & Approximate Aus Sizing\*\*** Note that there are two USA sizing schemes used (EG size) and that the last number in the size (e.g. 27) does not refer to leg length.

Wrangler length size chart. What size wranglers do i wear. Wrangler t shirt size chart. Is wrangler true to size. Wrangler shirt sizes. Wrangler denim shirt size guide. Wrangler shirt size chart. Are wrangler jeans true to size. Wrangler size chart men's.