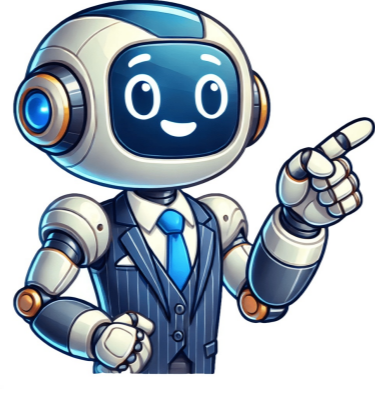


I'm human



How to use cm2 mtk

If you are looking for a reliable tool to flash stock ROM on MediaTek-powered devices, the CM2 MTK Module Tool is an excellent choice. This powerful tool offers various features, including unlocking FRP locks, screen locks, privacy locks, and repairing invalid IMEI issues. The CM2 MTK v1.58 tool, developed by Infinity Team, provides a comprehensive solution for flashing ROMs, unlocking devices, and performing system repairs. Its user-friendly interface makes it suitable for both novice and advanced users. With its robust features, the CM2 MTK v1.58 tool offers:

- * Bootloader Unlocking: Gain root access and perform system-level modifications
- * Screen Lock Removal: Remove screen locks without data loss
- * Device Information: Read detailed device information
- * Rooting Support: Effortlessly root your device with the built-in rooting feature
- * Security Repair: Repair security issues, including invalid IMEI

To download the latest version of CM2 MTK v1.58, visit the official links: [Click on Reset Privacy Lock](#), then connect your device in Flash Mode. Note that this requires an official CM2 box or dongle, which is not a cracked tool. The CM2 MTK v1.58 tool has been scanned for viruses using Kaspersky Antivirus and is safe to use. If prompted during extraction, enter the password 12345678. This essential tool helps manage MediaTek-powered devices by allowing you to flash firmware, unlock security features, or repair system issues. To avoid potential problems, follow the step-by-step guide provided and ensure that your device is properly connected. For more information on writing IMEI, Bluetooth, or WiFi/MAC addresses to Mediatek Android devices using Infinity Chinese Miracle II (CM2) MTK module, refer to our related post. To communicate with your device, ensure your PC is set up properly. Refer to our Forum and YouTube channel for guidance. Gather the necessary IMEIs for both devices and enable the IMEI write menu in Infinity CM2 MTK. This setting is disabled by default due to UK mode. Follow our guide to disable UK mode. Once you have enabled the IMEI write menu, select your phone's chipset and click Security. Under Security, find the Security / IMEI option. Choose the desired IMEI type (WiFi or Bluetooth) and tick the box. Copy only the first 14 digits of the 15-digit IMEI, as the tool will automatically calculate the last digit. Set this to CM2: Permanent and click Write Security. Wait for the process to complete and power off your device. Connect it to your PC via a USB cord and wait while the tool writes the IMEI. Power on your device and check the IMEI to confirm it has been successfully written. Note that we offer Free Support, but Private Support is recommended if you can't wait. This guide provides step-by-step instructions for backing up Mediatek Android devices using Infinity Chinese Miracle II / CM2 MTK module. To backup a Mediatek Android phone's firmware, use the Infinity Chinese Miracle 2 MTK module. Ensure you have sufficient storage space on your PC. Install the latest version of the CM2MTK tool to support newer chipsets. If you encounter an "Access denied" error during backup, refer to a guide. The tool was created by the Infinity Team and requires a hardware dongle and Mediatek VCOM drivers. Follow these steps: install CM2 MTK and supplementary files, launch the tool as Administrator, select your phone's CPU, and click Read Firmware. Power off your phone, connect it via USB, and navigate to save location. The backup process may take time. * LG X135 and X145 SPUnlock, Repair Security, Reset Settings, Forensic, UserLocks support added. * Only signed factory firmware is supported for flashing - no hold volume keys needed. * Supported secure phones can be found on the supportOther FlashLoaders package, with updated DRAM and INIT database. * New flash types are supported. * MT6573 and MT6575/MT6577 support has been fixed. * All MTK devices are divided into two categories - smartphones and bar phones (keypad phones). * Smartphones run Android and have touch screens, while bar phones are keypad phones with limited functionality. * To prepare for flashing, download MediaTek drivers and install them, as well as the latest CM2MTK setup version from the given link. * Always take a backup before flashing to avoid data loss. * Flashing keypad phones involves selecting FP:Auto in the first window, opening the flash tab, clicking bin to load file, and then proceeding with the flashing process. * Smartphones are flashed using SP:Auto in the first settings window, ticking Scatter on the left side, and then clicking Flash. * The Infinity CM2QLM Tool V1.58a is a setup file for flashing stock ROM on MediaTek chipset devices. * It helps with unlocking privacy and screen locks, removing FRP locks, and repairing invalid IMEI problems. * The tool also features user-friendly interface, fast and secure data transfer, baseband problem repair, phone code removal, and NVRAM file writing and reading. To reset various locks on your device using Infinity Box CM2 MTK tool: - Open Tool and select Service Tab/FRP Tab/User Data Tab as required. - Choose Format FS/FRP/Reset Privacy Lock in respective tabs. - Connect Device to Flash Mode & Click on Required Button. - Backup Important Data Before Flashing Device, Ensure Sufficient Charge. This tool is Easy to Use but Recommended for Experts who have Activated CM2 Box. Also Visit Official Firmware and MediaTek USB Driver Sites as Needed. Firstly, make sure your device is connected to flash mode and select "Format FS." Prioritize backing up crucial data before initiating the repair process since it may be lost during the procedure. Ensure that your device has sufficient battery life, as turning off during flashing could indicate a dead unit. The Infinity Box CM2 MTK module tool is user-friendly, but experts will find it more manageable. Virus scanning was performed using Kaspersky Antivirus before uploading the tool, so users need not worry about security concerns. For successful use of this tool, you must first activate your CM2 Box. Additionally, obtain a MediaTek USB driver if necessary and consult the official Firmware website for firmware requirements. You can also explore alternative tools such as the CM2 MT2, CM2 SPD, or CM2 SPD2 modules. This guide aims to walk through flashing Mediatek Android device firmware using Infinity Chinese Miracle II (CM2) MTK in either bin or scatter format. Users of recent Mediatek devices should use the CM2 MT2 tool instead. To flash a Mediatek Android device's firmware: 1. Launch the CM2 MTK module. 2. Select your device's chipset under Settings > CPU. 3. Navigate to the Flash tab and choose either bin or scatter format for your firmware, depending on its type. 4. If you selected bin format, click the Bin button; otherwise, select the Scatter option. 5. Open the appropriate file (bin or scatter) in the pop-up window. 6. Review the firmware details and adjust settings according to your needs. 7. Click Flash once all preparations are complete. When instructed to do so, power off the device while it's still powered on, then connect it to your PC via a USB cord for the flashing process to begin. Avoid interrupting the CM2 MTK as this could cause the device to malfunction or become unresponsive. To find out more, head over to our Forum and check it out. Once that's done, install the CM2 MTK module on your device. Ensure that your hardware dongle is in standby mode. It's a good idea to keep it connected to your PC while you're installing the module so you don't forget. Installing both MTK modules is the next step. Before proceeding, verify that your dongle is plugged into your PC's USB port and launch the Infinity CM2 MTK shortcut. Be patient as it may take some time to load. Now, navigate to Settings > CPU and select your phone's chipset from the dropdown menu. We have a guide on how to determine your phone's chipset if you're unsure. Once you've chosen your chipset, move on to the flash tab. Choose the format in which you want to flash (bin or scatter) by ticking the corresponding radio button. I'll be using scatter format for this example. Next, untick all the boxes under Settings, but feel free to tick any that you need. When you're finished, click on Scatter and a new window should pop up. Locate your firmware or ROM and select the scatter file from within it. Click on Open to begin the detection process. Once detected, click on Flash and wait for the phone to power off with its battery still inside. Connect it back to the PC via USB, and you should see detection start flashing. Please ensure that you don't interrupt this process as it's crucial for a successful flash. That's how you use the Chinese Miracle 2 or CM2 MTK module to flash a Mediatek Android phone. We have a scheduled reply system in place for free support, but if you're unable to wait, consider upgrading to private support.

Cm2mtk not opening. Cm2 use. How to use cm2 memory tool. How to use cm2 mt2. Cm2 mtk setup.