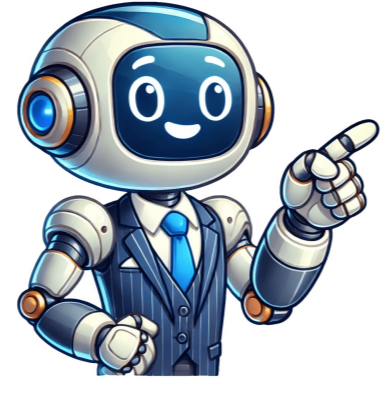


Continue



The cost of installing new sod can vary depending on several factors, including the size of the lawn, soil condition, and type of grass. On average, the cost ranges from \$1 to \$2 per square foot or between \$1,000 and \$3,000 for a 1,500-square-foot lawn. For existing yards, resodding costs around \$1.50 to \$4.00 per square foot. Additionally, labor costs can range from \$0.50 to \$1.00 per square foot, depending on the size of the lawn and any necessary preparation work. To give you a better idea, here are some estimated costs for sod installation based on lawn size: - 500 sq ft: \$500-\$1,000 - 1,000 sq ft: \$1,000-\$2,000 - 1,500 sq ft: \$1,500-\$3,000 - 2,000 sq ft: \$2,000-\$4,000 It's worth noting that these costs do not include the removal of old grass, which can add an additional \$0.50 to \$2.00 per square foot. Some general guidelines for sod installation costs are: * Average cost: \$1 to \$2 per square foot * Minimum cost: \$500 * Maximum cost: \$6,000 * National average cost: \$2,000 It's also worth considering the following factors that can affect sod installation costs: * Yard size and accessibility * Soil condition * Grass type and quality * Labor and prep work required * Permits (which may be necessary for large-scale projects) The price of new sod can vary depending on the type, grade, and availability. On average, it ranges from \$0.30 to \$0.80 per square foot. I hope this paraphrased version helps! Sod labor costs range from \$35 to \$80 per hour, depending on location, yard condition, landscaping complexity, and prep work required. Old grass removal costs \$0.50 to \$2.00 per square foot, including hauling and disposal. Land leveling costs \$0.40 to \$2.00 per square foot for drainage issues or reshaping landscaping. Rototilling prices range from \$50 to \$100 minimum, with additional fees for heavy-duty work or equipment rental. Soil testing costs \$10 to \$50 to determine nutrient needs. Topsoil adds \$10 to \$50 per cubic yard to support new grass. Weather conditions can increase labor fees by 10% to 15%. Installing a pallet of sod costs \$400 to \$1,000 on average, covering 400 to 500 square feet without old grass removal. A single pallet takes 4 to 5 hours to install, including site prep and cleanup. The cost to install a sprinkler system averages \$1,800 to \$5,200, plus \$1 to \$4 per square foot for sod installation. Resodding a yard costs \$1.50 to \$4.00 per square foot, including old sod removal, prep work, and new sod installation. Additional services like topsoil addition, grading, weed spraying, and fertilizing increase overall costs. DIY sod installation can save up to 50% of professional costs but requires more prep work. The DIY cost includes \$250 to \$850 for tools and supplies, plus \$0.30 to \$0.80 per square foot for new sod grass. The cost of tools for laying sod can range from \$150 to \$200, excluding labor costs. When it comes to maintaining new sod grass, several factors come into play. It's best to install sod in the spring or fall, at least 1 to 2 months before the first freeze, as extreme heat in summer can cause some types of new grass to die off quickly. Sod installation professionals can be found through various means. New sod takes around 10 to 14 days to sprout shallow roots and 4 to 6 weeks for the roots to stabilize. To encourage growth, it's essential not to walk on or cut the grass in the first 14 days. After 10 to 14 days, you can start walking on your lawn, and after 4 to 6 weeks, you can begin mowing, edging, and fertilizing. Watering is crucial, with 1 to 2 times daily for the first week and every other day for another 2 weeks, depending on the climate. When hiring a sod installation company, it's vital to compare estimates from different companies, check online reviews, and ask about licenses, insurance, and contracts. Never pay in full upfront, and ensure the sod-removal method complies with local regulations. Sod is a convenient option for homeowners who want a vibrant and even lawn immediately, as it's more reliable than seed and requires lower water care. However, there are pros and cons to both sod and seed, and convenience often comes at a cost. Before making a decision, consider factors such as the type of new grass that grows well in your area, the quality of the sod, and any additional costs for preparation, equipment rentals, and labor warranties. The higher the convenience, the greater the cost. This principle applies to sod installation, where a single roll can set homeowners back \$1,500 to \$3,000 on average. With prices ranging from \$0.80 to \$2 per square foot, delivered and installed, it's no wonder many opt for seeding the less visible areas to reduce expenses. Several factors influence the overall cost of a sod project: the type of sod chosen, climate and region, delivery costs, labor costs, and lawn size. For instance, Fescue is one of the more affordable options, while Bermuda is pricier. Zoysia and St. Augustine fall somewhere in between. Turf prices vary by species, location, nursery, and quantity purchased, so it's essential to consult with a local turf farm for an accurate estimate. Additionally, homeowners should consider factors such as climate, sod quality, and installation method to ensure the best possible results. How much is grass per square foot. Grass price per square meter. How much is sod per square. How much sod do i need for 1000 square feet. How much is grass per square metre. How much is sod per square foot.