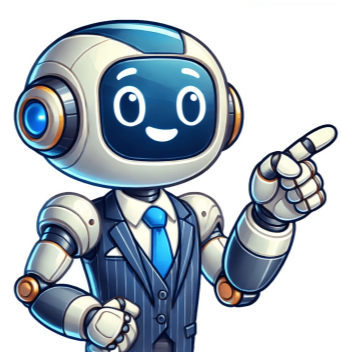


Continue



Vans sizing guide

****Introduction**** Vans are no longer just a favorite among skaters but have become a staple in many people's wardrobes. Their trainers are comfortable, timeless, and add an edgy touch to any outfit. ****Sizing Guide**** When it comes to buying Vans, sizing can be tricky. Vans generally run true to size, but some models may run big or small depending on the design. Here's a general guide: * For most Vans models, it's best to buy half a size down. * Models like Old Skool and Sk8-Hi tend to run big, so order half a size to one size down. * Models like Era and Authentic run true to size. ****Women's Sizing Guide**** To ensure you get the right size of Vans women's shoes, use our sizing chart. Measure your feet and match your UK shoe size to the corresponding EU size. | UK Size | EU Size | Foot Length (inches) | |---|---|---| | 2.5 | 34.5 | 8.5 | | 3 | 35 | 8.7 | | ... | ... | ... | | ****Men's Sizing Guide**** Use the same chart as above, but for men's sizes. | UK Size | EU Size | Foot Length (inches) | |---|---|---| | 6 | 39 | 9.8 | | 6.5 | 40 | 10 | | ... | ... | ... | | ****Children's Sizing Guide**** To find the right size for your child, use this chart: | Children's Size (UK) | EU Size | Foot Length (inches) | |---|---|---| | 1.5 | 17 | 3.9 | | 2 | 17.5 | 4.1 | | ... | ... | ... | | ****Conclusion**** With our sizing guides, you'll be able to find the perfect pair of Vans for yourself or your loved ones. Remember, it's always better to buy half a size down to ensure a comfortable fit. Vans shoe sizing is as follows: Although I purchased my regular size, the fit was tighter than usual. Overall, I don't recommend sizing up, but it might be good if you want a looser fit or are between sizes. You can use Vans.com's sizing tutorial to find the proper size. If you think your Vans fit snugly, I recommend using the size guide on Vans' website, which matches your foot measurements with a suitable shoe size. This resource will give you an accurate assessment of your foot size and corresponding shoe size. In my comparison of various shoes, including Vans Authentic and Slip-On models, I noticed that these brands often feature a snug design to ensure a secure fit. However, it's essential to note that most people prefer their normal sizing for Vans, although this may not result in a loose fit. Additionally, the toe box area on Vans Slip-On shoes is relatively shallow, contributing to a more secure fit. Nevertheless, I advise ordering your regular shoe size unless you desire a looser fit or require extra space near the toe box. To ensure an optimal fit, utilize the Vans sizing resource and take note of my detailed photos for different models and sizes. Furthermore, when comparing Sk8-Hi sizing to other popular shoes, I found that it tends to run slightly smaller than standard shoe sizes due to its snug design. The shallow toe box area on these shoes also contributes to a secure fit. Nonetheless, most individuals prefer their normal size for Vans Sk8-Hi, but be aware that this may not yield a loose fit. To guarantee the perfect fit, I recommend using the Vans sizing chart and consulting my extensive photos for various models and sizes. Vans UltraRange EXO Sizing Photos I took over 20 sizing photos for men's sizes of Vans UltraRange EXO shoes and can share them with you here. Click here to view the rest of my Vans Sk8-Hi sizing photos for women. You can expect the Vans UltraRange EXO to fit true to size. This shoe type is more modern than classic Vans and has a regular fit. In comparison, other types of athletic shoes may run smaller or larger. For example, here is my UltraRange EXO compared to Old Skool sizing: And here is my UltraRange EXO compared to Vans Slip-On sizing. In general, Vans sneakers have a standard width that isn't too wide or too narrow. However, there are some things to consider when it comes to width. Some styles of Vans offer wide sizes, but you need to check the "Wides" page on Vans.com to view all options. I found that modern types of Vans shoes like UltraRange EXO have a regular width, while classic Vans shoes like Authentic and Old Skool have a shallow toe box. When buying Vans, be aware that they run true to size in length, but can be narrower due to their snug design. It's best to order normal shoe sizing for a secure fit. However, some classic styles like the Old Skool have a more regular width near the ball of your foot. If you prefer a roomier toe box, consider sizing up or ordering wide sizing. Vans was designed as performance skate shoes with a snug fit, so don't expect them to be loose like normal shoe sizing.

Vans knu skool sizing guide. Vans размеры. Vans clothing sizing guide. Sizing vans. Do vans sizes run small. Vans shoe sizing guide. Vanson sizing guide. Are vans true to size. Vans slip on sizing guide. Do vans run small or true to size. Vans sizing guide reddit. Do vans fit true to size. Size guide vans. Vans kids sizing guide. Vans snowboard boots sizing guide.