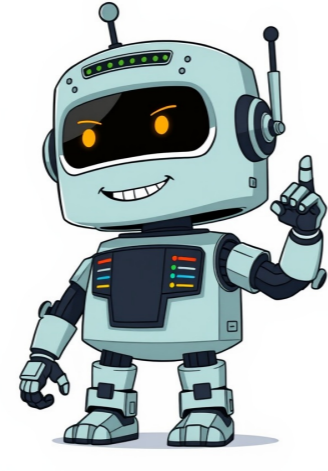


I'm not a bot





























The Brooks Brothers men's suits are measured using a size chart that combines the jacket measurement with a size category. The size categories include Short, Regular, Long, and Extra Long. These categories are based on height ranges: - \*\*Short\*\*: up to 5'9" or 175 cm - \*\*Regular\*\*: 5'10" to 6'0" or 178 cm to 183 cm - \*\*Long\*\*: 6'1" to 6'4" or 185 cm to 193 cm - \*\*Extra Long\*\*: 6'4" and up, or 193 cm and up For Men's Madison Suits, the size chart for waist measurement is as follows: - \*\*XS\*\*: 13-15/2 inches (33-34 cm) - \*\*S\*\*: 14-17/2 inches (36-37 cm) and 32-34 inches (81-86 cm) - \*\*M\*\*: 15-19/2 inches (38-39 cm), 30-32 inches (76-81 cm) Similarly, for Regent, Fitzgerald, Milano Suits, the waist measurement ranges from 13-15/2 to 18-19/2 inches (33-34 cm and 36-37 cm). Looking forward to see everyone at the meeting tomorrow and discuss our strategies. ===== Men's Performance Polos Original Fit Size Chart Measurement Unit: US (inch) | World (cm) | Both Polo Size ChestShoulderBack LengthSleeveXS32 - 34 inch81 - 86 cm161/4 inch41 cm25 inch64 cm8 inch20 cmS34 - 36 inch86 - 91 cm17 inch43 cm261/2 inch67 cm81/2 inch22 cmM38 - 40 inch97 - 102 cm18 inch46 cm273/4 inch70 cm9 inch23 cmXL46 - 48 inch117 - 122 cm20 inch51 cm303/4 inch78 cm91/2 inch24 cmXXL50 - 52 inch127 - 132 cm21 inch53 cm311/2 inch80 cm93/4 inch25 cm ===== Footwear Measurement Unit: US (inch) | World (cm) | Both USA Europe UK Japan7.5406.525.58417268.5427.526.5942827104392810.5449.528.51144102911.54510.529.51246113013481231 ===== Socks Measurement Unit: US (inch) | World (cm) | Both Sock Size US Shoe Size10.57.5 - 8.5 119 - 10 11.510.5 - 11.5 1212 - 13 1313.5 - 15 1415.5 - 16.5 ===== Underwear Boxers & Briefs Traditional Fit Size Chart Measurement Unit: US (inch) | World (cm) | Both Underwear Size Waists30 - 32 inch76 - 81 cmM34 - 36 inch86 - 91 cmL38 - 40 inch97 - 102 cmXL42 - 44 inch107 - 112 cmXXL46 - 48 inch117 - 122 cm ===== Hats Measurement Unit: US (inch) | World (cm) | Both Size Hat Size Head CircumferenceS63/4 - 67/8 inch17 - 17 cm211/2 inch55 cmM7 - 71/8 inch18 - 18 cm221/8 - 221/2 inch56 - 57 cmL71/4 - 73/8 inch18 - 19 cm23 - 233/8 inch58 - 59 cmXL71/2 - 75/8 inch19 - 19 cm233/4 - 24 inch60 - 61 cm ===== Gloves How to Find Your Glove size Open your dominant hand. With a tape measure, wrap around your hand over the knuckles. Where the tape measure overlaps at the starting point is the measurement for your glove size. ===== Belt Measurement Unit: US (inch) | World (cm) | Both Belt Size Waist LengthS32 - 34 inch81 - 86 cm40 inch102 cmM36 - 38 inch91 - 97 cm431/2 inch110 cmL40 - 42 inch102 - 107 cm461/2 inch118 cmXL44 inch112 cm493/4 inch126 cm To find the perfect fit, it's essential to consult the size charts provided by clothing retailers like Brooks Brothers, America's oldest clothing store, founded in 1818. The company is known for its classic style and high-quality products. For women, the shoe size chart includes American sizes 5.5 to 10, European sizes 35 to 40, English sizes 2.5 to 6, and Japanese sizes 21 to 26, with corresponding foot lengths ranging from 24.1 to 28.1 cm. On the other hand, men's shoe sizes range from American 7.5 to 13, European 40 to 46, English 7 to 12.5, and Japanese 25 to 31, with foot lengths between 25.5 and 30.5 cm. For outerwear, blazers, t-shirts, blouses, and sweaters, size charts vary by category and gender, with measurements including chest circumference, waist, and hip sizes. International sizes such as XS, S, M, L, XL, and XXL are also provided for comparison. The Brooks Brothers size guide helps customers choose the right fit by explaining different cuts like Regent, Madison, and Milano, ensuring a confident investment in stylish and comfortable pieces. =====