



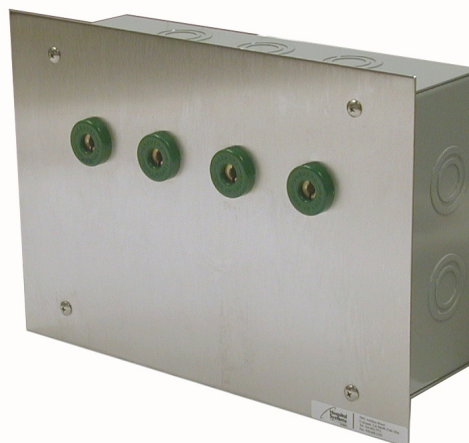
750 Garcia Ave, Pittsburg
CA 94565
+1.925.427.7800
HSIheadwalls.com

Patient Ground Module

Grounded Module

The Patient Ground Module is ideal to accommodate the grounding of fixed metal items around the electrically susceptible patient as well as the grounding of portable equipment in the same area.

Configurations	Part Number
2 Ground Jacks	358284
4 Ground Jacks	358184
6 Ground Jacks	358049
8 Ground Jacks	358081



Features/Specifications:

- Extra heavy duty ground jacks under NFPA Standard 99
- Ground bus constructed of forged copper with 24 taps for #14-6 and a main lug of 250MCM-#6 wire ranges
- Brushed stainless steel finish with welded screw studs
- Front can be removed for servicing without disturbing external ground wires

Options:

- 2-8 ground jacks standard, larger units can accommodate more