

B.

Berber Point 920

Berber Point 920 is an evolution. A product that has stood the test of time has now shed its skin to offer the commercial space an exploratory carpet experience. The new range delivers variety and creative flex without losing the robust, hard-working attribute that its reputation has been built upon.

Extended Specifications

Use Classification:	Heavy Commercial (EN 1307)
Construction:	Structured Needlepunch
Recycled Content:	Face Fibre - Blend of Stainproof Miracle Fibre & Stainproof Miracle Fibre Eco (Certain Colours)
Fibre Type:	Stainproof Miracle Fibre (Polypropylene)
Fibre Mass:	(ISO 8543)
Total Thickness:	± 7mm on ResinBac ± 7.5mm on NexBac (ISO 8543)
Total Mass:	± 1317g/m ² on ResinBac* ± 3877g/m ² on NexBac* (ISO 8543)
Standard Size - Broadloom:	4.2m**
Fire Classification:	2 (SANS 10177-4) on ResinBac 3 (SANS 10177-4) on NexBac (EN 13501) (ISO 9239) (ASTM E 648-08)



B.

Berber Point 920

Extended Specifications

Colour Fastness To: Light 7 (NF EN ISO 105-B02)
 Water 4-5 (ISO 105-E01)
 Rubbing (Dry) 4-5 (ISO 105-X12)
 Rubbing (Wet) 4-5 (ISO 105-X12)

Electrostatic Propensity: (EN 14041) / (ISO 6356)

Sound Absorption: (EN ISO 354)

Sound Insulation: (EN ISO 10140)

Thermal Resistance: (ISO 8302)

VOC Tested: (ASTM D5116)

Castor Chair Suitability: (NF EN 985)

Staircase Suitability: (EN 1963)/ (NF EN ISO 12951)

Warranty: 10 year

Guarantee: 5 year

* Weighted average.

** Also available in 25x100cm planks, 100x100cm tile & Shapes (Chevron left & Chevron right/Hexagon/Right-angle Triangle as per the diagram). Belgotex BERBER POINT 920 to be installed as follows 25x100cm = Herringbone, 100x100cm = Tessellated & Shapes = Belgotex fitting instructions. As these are custom offerings they are not standard, minimum production quantities apply. Please contact your nearest Belgotex representative for more information on this.

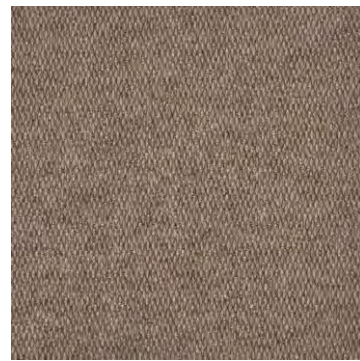


B.

Berber Point 920



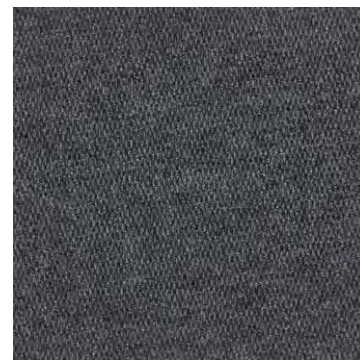
Beyond
L = 21.56 Y = 3.40



Resilience
L = 39.43 Y = 10.91



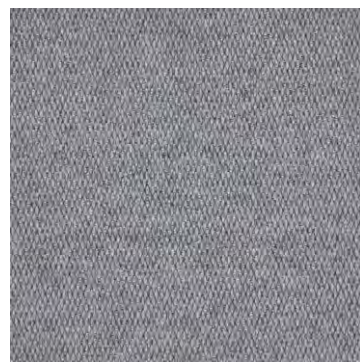
Founder
L = 25.46 Y = 4.57



Polish
L = 33.76 Y = 7.89



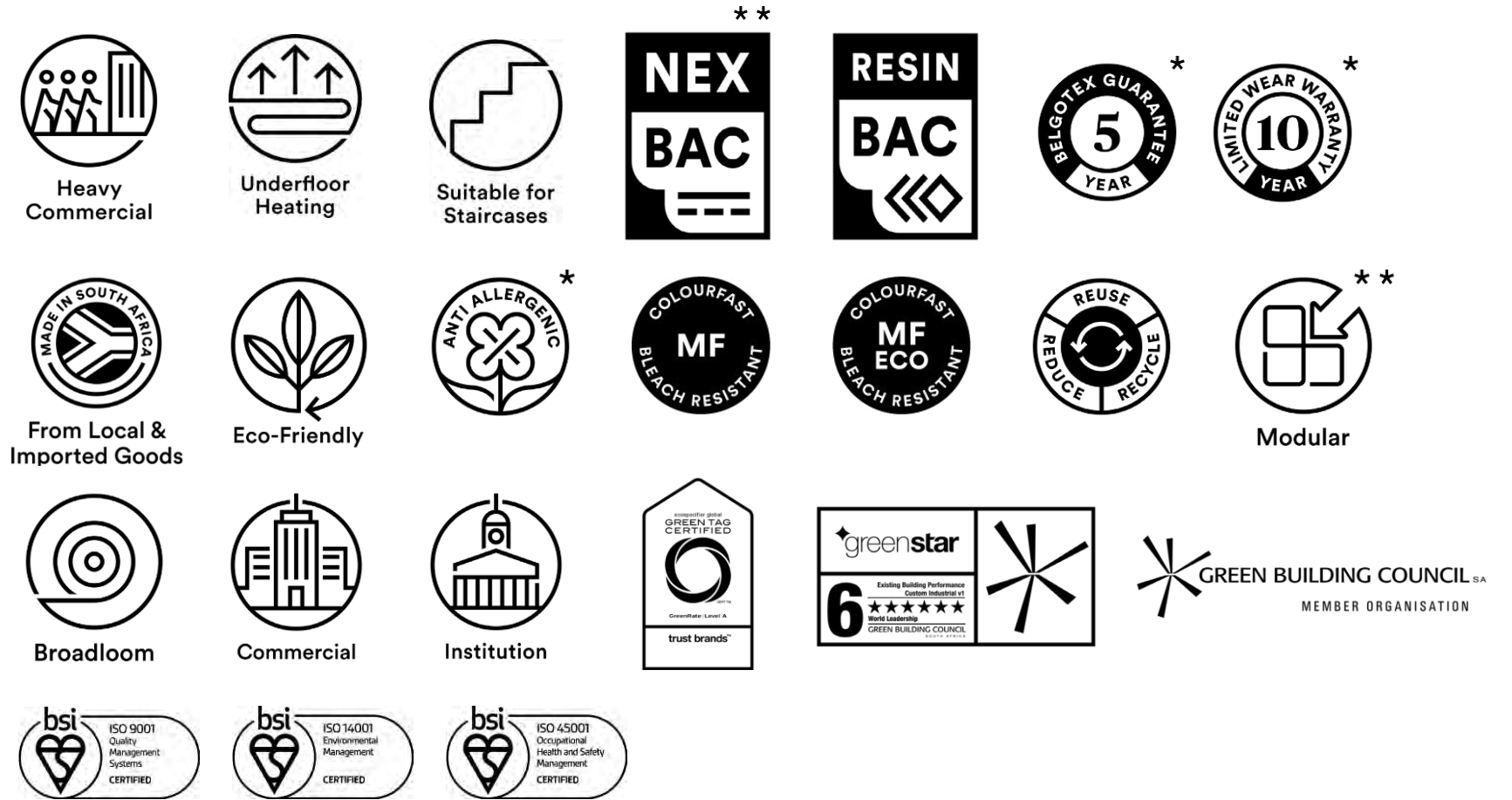
Redefine
L = 26.57 Y = 4.94



Scalable
L = 40.49 Y = 11.55



Tactic
L = 17.74 Y = 2.46



Bill of Quantities

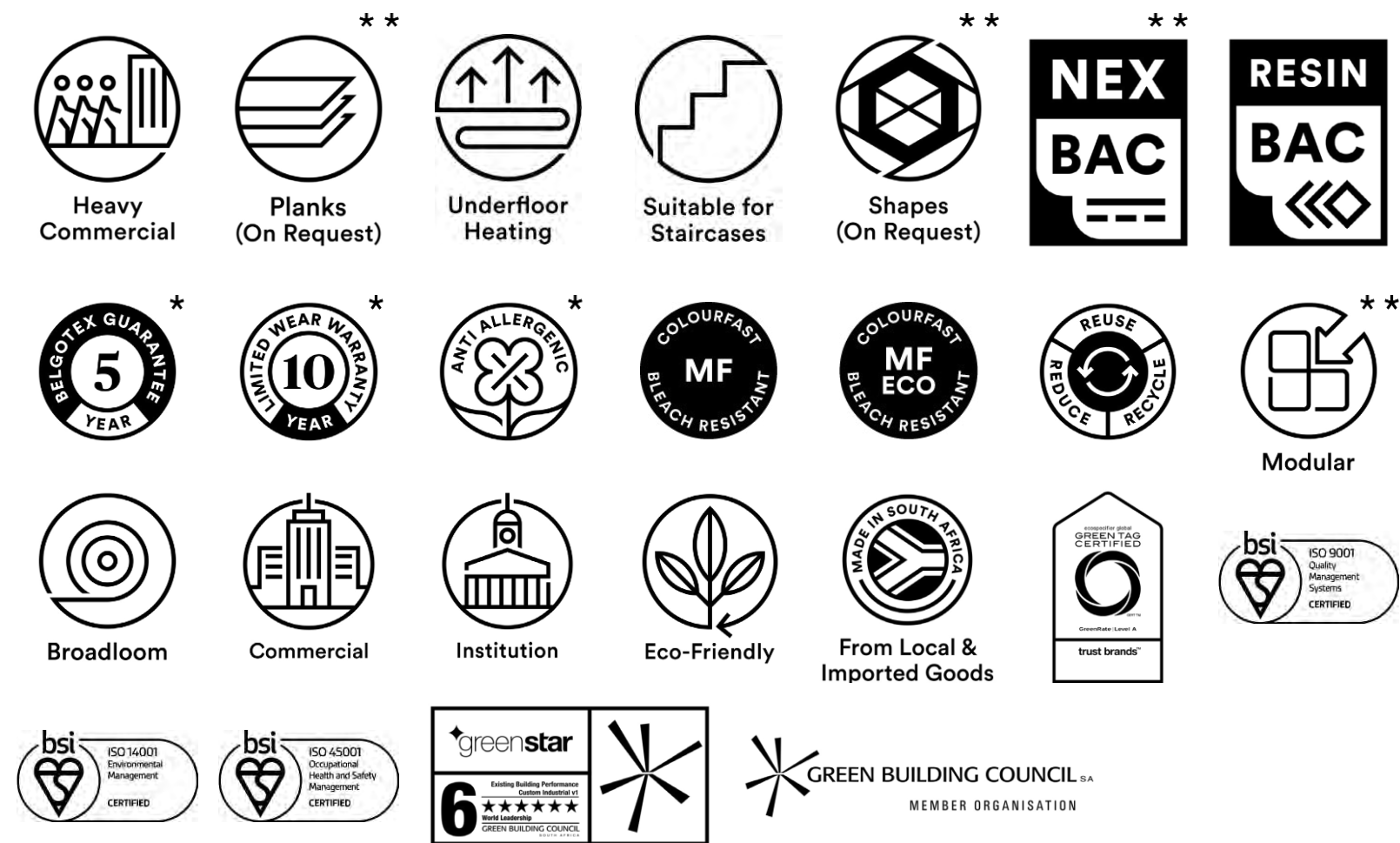
- Belgotex BERBER POINT 920 at 4.2m width ResinBac broadloom & BERBER POINT 920 at 50x50cm ResinBac/ NexBac tiles are manufactured from Stainproof Miracle Fibre (Polypropylene).
- This product is to be laid in accordance with SANS 10186 fitting code of practice.
- Belgotex BERBER POINT 920 ResinBac and NexBac tiles to be installed in tessellated format only.
- Belgotex recommends the use of carpet protector mats where castor wheels are used.
- 5 year guarantee and 10 year warranty.
- Made in South Africa.
- Green Tag A level certification.

*All product names and logos are trademarks of BELGOTEX FLOORCOVERINGS® (Pty) Ltd. © BELGOTEX FLOORCOVERINGS® (Pty) Ltd. All rights reserved. Warranty and guarantee to limitations and conditions. For details contact BELGOTEX FLOORCOVERINGS® (Pty) Ltd.

**BERBER POINT 920 is also available in MTO Shapes (ResinBac only), 25x100cm and 100x100cm tiles (NexBac only). As these are custom offerings, please contact your nearest Belgotex representative for more information on this.

B.

Berber Point 920



Bill of Quantities

- Belgotex BERBER POINT 920 at 4.2m width ResinBac broadloom & BERBER POINT 920 at 50x50cm ResinBac/ NexBac tiles are manufactured from Stainproof Miracle Fibre (Polypropylene).
- This product is to be laid in accordance with SANS 10186 fitting code of practice.
- Belgotex BERBER POINT 920 ResinBac and NexBac tiles to be installed in tessellated format only.
- Belgotex recommends the use of carpet protector mats where castor wheels are used.
- 5 year guarantee and 10 year warranty.
- Made in South Africa.
- Green Tag A level certification.

*All product names and logos are trademarks of BELGOTEX FLOORCOVERINGS® (Pty) Ltd. © BELGOTEX FLOORCOVERINGS® (Pty) Ltd. All rights reserved. Warranty and guarantee to limitations and conditions. For details contact BELGOTEX FLOORCOVERINGS® (Pty) Ltd.

**BERBER POINT 920 is also available in MTO Shapes (ResinBac only), 25x100cm and 100x100cm tiles (NexBac only). As these are custom offerings, please contact your nearest Belgotex representative for more information on this.