

B.

Grid

This durable tufted tile is designed to fit into any modern work environment with its grid-like pattern overlaid on grey tones creating an energy within the space. Available in 50x50cm tiles, it's ideal in high traffic spaces.

Extended Specifications

Use Classification:	Heavy Commercial – 33 (EN 1307)
Construction:	Tufted Pattern Colour Placement Loop Pile
Recycled Content:	Yarn – Stainproof SDX Eco - Certain Colours
Yarn Type:	Stainproof SDX (Solution Dyed Nylon-6)
Yarn Mass:	± 450 g/m ² (±15) ± 13.27 oz/yd ² (±0.44)
Pile Height:	± 3 mm (±0.5) ± 0.12 in (±0.02)
Total Thickness:	± 6 mm (±0.5) ± 0.24 in (±0.02)
Total Mass:	± 4145 g/m ² ** (±5%) ± 122.25 oz/yd ² ** (±5%)
Tile Size:	50x50 (cm) 19.69x19.69 (in)
Backing Type:	NexBac
Machine Gauge:	1/10"
Stitch Rate:	50 stitches/10cm 12.7 stitches/in



B.

Grid

Extended Specifications

Fire Classification:	2 (SANS 10177-4) Bfl-s1 (EN 13501) Class 1 (ASTM E 648-08)
Colour Fastness to: light	> 6 (AATCC 16/ISO 105 B02)
Rubbing (change of colour):	4-5 (AATCC 165/ISO 105 X 12)
Rubbing (staining):	4-5 (AATCC 165/ISO 105 X 12)
Electrostatic Propensity:	≤ 2 kV (ISO 6356 – CE Market)
Static Control:	Permanent
Sound Absorption:	αw 0.15 (EN ISO 354)
Sound Insulation:	Δ Lw 21 dB (ISO 717-2)
Thermal Resistance:	0.0649 m ² .K/W (ISO 8302)
Surface Pile Density:	0.104 g/cm ³
Dimensional Stability:	Pass (NF EN 986)
VOC Tested:	Pass (GBCSA/GBCA)
Castor Chair Suitability:	A: Intense Use (NF EN 985)
Warranty:	15 years (Linked to a Maintenance Plan)
Guarantee:	5 years

** Weighted Average



B.



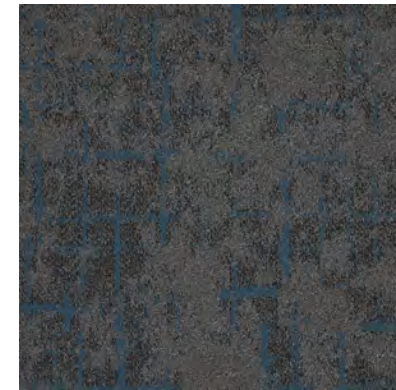
Cloud Break
L = 36.57 Y = 9.31



Dryland
L = 42.54 Y = 12.86



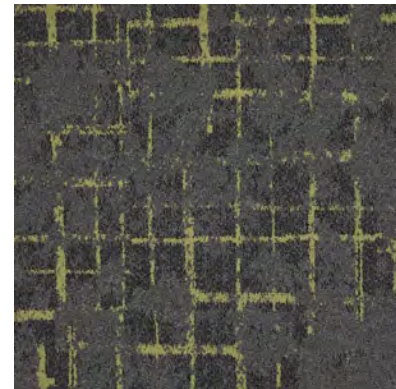
Headland
L = 36.57 Y = 9.31



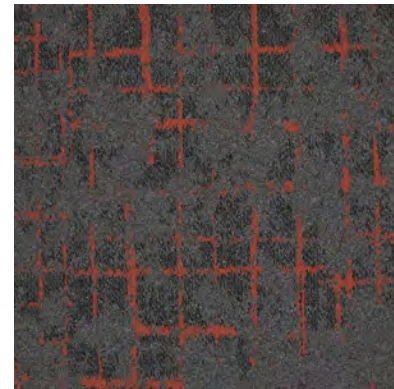
Horizon
L = 27.20 Y = 5.17



Rocky Edge
L = 31.54 Y = 6.88



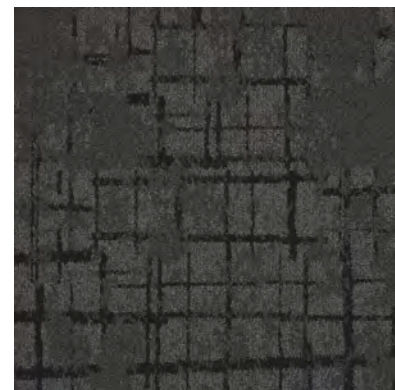
Sunrise
L = 28.53 Y = 5.66



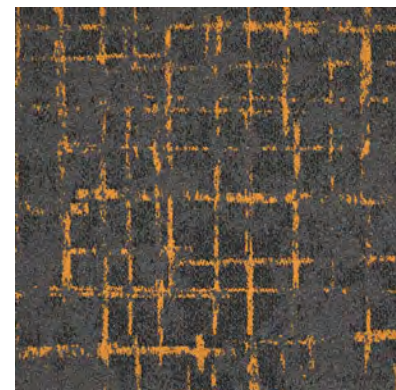
Sunset
L = 26.48 Y = 4.91



Thunder
L = 25.00 Y = 4.42



Twilight
L = 21.83 Y = 3.47

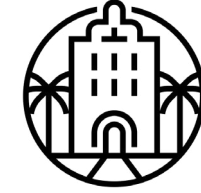


Vesper
L = 27.78 Y = 5.38

Grid



Heavy Commercial



Hospitality



Institution



Commercial



BELGOTEX GUARANTEE
5 YEAR



LIMITED WEAR WARRANTY
15 YEAR



COLOURFAST
SDX BLEACH RESISTANT

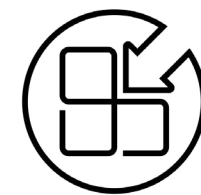


COLOURFAST
SDX ECO BLEACH RESISTANT

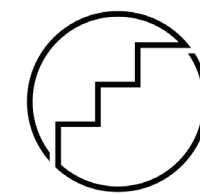
(Linked to a Maintenance Plan)



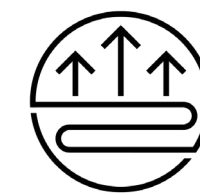
NEX
BAC



Modular



Suitable for Staircases



Underfloor Heating



ANTI ALLERGENIC



Eco-Friendly



REUSE
REDUCE
RECYCLE



MADE IN SOUTH AFRICA
From Local & Imported Goods



GREEN TAG CERTIFIED
trust brands



Bill of Quantities

- Belgotex GRID 50x50cm heavy commercial ±6mm NexBac tiles are manufactured from Stainproof SDX and Stainproof SDX Eco.
- This product is to be laid in accordance with the SANS 10186 fitting code of practice.
- Belgotex GRID tiles to be installed in the following directions: Ashlar, Random Ashlar, Brick, Monolithic, Colour Mix and Tessellated.
- Belgotex recommends the use of carpet protector mats where castor wheels are used.
- 5 year guarantee and 15 year warranty (Linked to a Maintenance Plan).
- Made in South Africa.
- Green tag level A Gold rated certification.

*All product names and logos are trademarks of BELGOTEX FLOORCOVERINGS® (Pty) Ltd. © BELGOTEX FLOORCOVERINGS® (Pty) Ltd. All rights reserved. Warranty and guarantee to limitations and conditions. For details contact BELGOTEX FLOORCOVERINGS® (Pty) Ltd.

***Belgotex GRID to be installed in the following directions: Ashlar, Herringbone. Please contact your nearest Belgotex representative for more information.