

The Local Expression: Grafica - Crates.



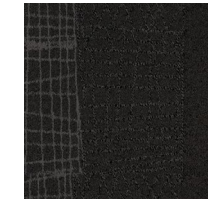
The Local Expression: Grafica - Crates | Mixed

BILL OF QUANTITIES:

- Belgotex Crates, Blocks and Skew Lines 50cm x 50cm NexBac tiles are manufactured from Stainproof SDX Eco (Solution Dyed Nylon).
- This product is to be laid in accordance with the SANS 10186 code of practice.
- Belgotex Crates, Blocks and Skew Lines can be installed in the following directions: tessellated, random, monolithic, brick and ashlar.
- Belgotex recommends the use of carpet protector mats where castor wheels are used.

Product Information

A stack-style design inspired by our local make-shift, can-do culture. Crates embodies the iconic marketplace form in a pattern rooted in humility and hard work.



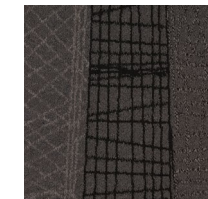
Heavy Load



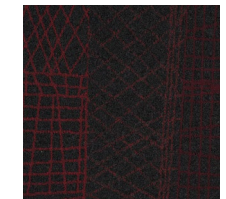
Light Load



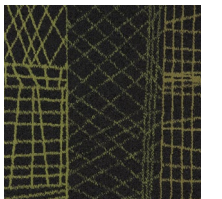
Make Hay



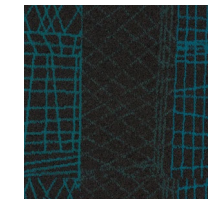
Pick Mix



Juice Box



Fresh Goods



Happy Stack



Hard Worn



Stack On

Extended Specifications

Use Classification	Heavy Commercial
Construction	Pattern Colour Placement
Product Description	Heavy Commercial SDN Tufted Loop Pile Bitumen Tile - SCP
Recycled Content	Pile Yarn (certain colours) Backing (NexBac Eco/EcoBac on request)
Yarn Type	Stainproof SDX (Solution Dyed Nylon)
Pile Height	± 3mm
Total Thickness	± 6mm
Total Mass	±3900g/m ² **
Standard Size	50cm x 50cm***

** Weighted average

*** Also available in 60cm x 60cm, 1m x 50cm, 1m x 1m NexBac tiles and 25cm x 100cm NexBac plank tiles. EcoBac is available on request for 50cm x 50cm and 1m x 1m tiles. As these sizes and backings are not standard, minimum production quantities apply.

