

B.

# Berber Point 650

Delivering on the world-renowned Berber Point reputation for durability and performance, Berber Point 650 is an amazingly versatile and cost-effective carpeting solution. The fibre technology used for Berber Point 650 is Belgotex’s Stainproof Miracle fibre (Polypropylene).

## Extended Specifications

Use Classification:	Medium/General Commercial (EN1307)
Construction:	Structured Needlepunch
Recycled Content:	Face Fibre - Blend of Stainproof Miracle Fibre & Stainproof Miracle Fibre Eco (Certain Colours)
Fibre Type:	Stainproof Miracle Fibre (Polypropylene)
Fibre Mass:	(ISO 8543)
Total Thickness:	± 6mm on ResinBac (ISO 8543)
Total Mass:	± 974g/m2 on ResinBac (ISO 8543)
Standard Size (Broadloom):	4.2m
Standard Size - Tile:	50×50cm***





B.

# Berber Point 650

## Extended Specifications

Fire Classification:	2 (SANS 10177-4) on ResinBac (EN 13501) (ISO 9239) (ASTM E 648-08)		
Colour Fastness To:	Light	7	(ISO 105-B02)
	Water	4-5	(ISO 105-E01)
	Rubbing (Dry)	4-5	(ISO 105-X12)
	Rubbing (Wet)	4-5	(ISO 105-X12)
Electrostatic Propensity:	(EN 14041) / (ISO 6356)		
Sound Absorption:	(EN ISO 354)		
Sound Insulation:	(EN ISO 10140)		
Thermal Resistance:	(ISO 8302)		
VOC Tested:	(ASTM D5116)		
Castor Chair Suitability:	(NF EN 985)		
Staircase Suitability:	(EN 1963) / (NF EN ISO 12951)		
Warranty:	15 year		
Guarantee:	5 year		

\*\* Weighted average.

\*\*\*Belgotex BERBER POINT 650 to be installed as follows: 50×50cm tiles in Tessellated. As these custom offerings are not standard, minimum production quantities apply. Please contact your nearest Belgotex representative for more information on this.





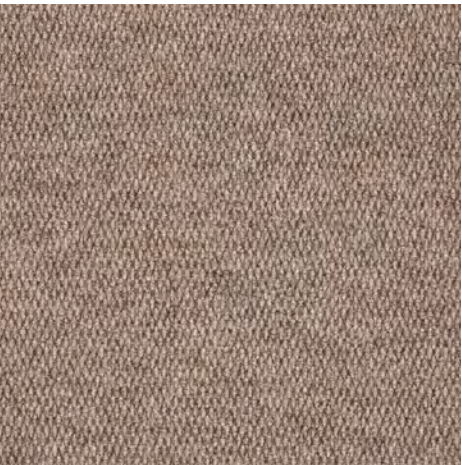
B.



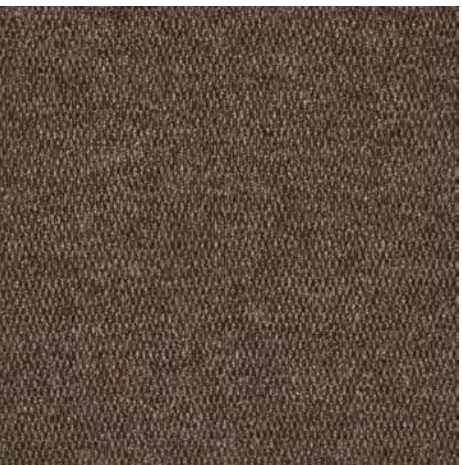
Blue Hull



Coral



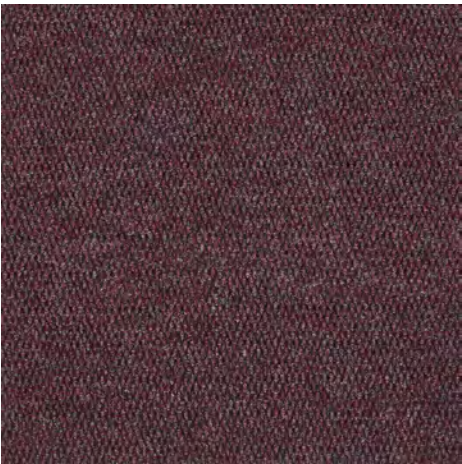
Crushed Shell



Galleon



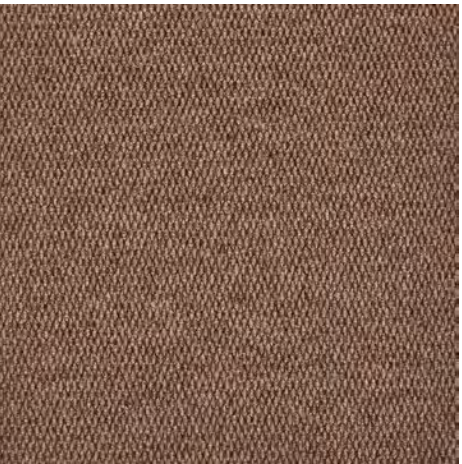
Kelp



Plankton



Rock

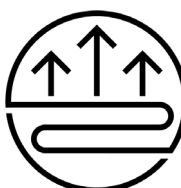


Wet Sand

# Berber Point 650



Suitable for Staircases



Underfloor Heating



Medium/General Commercial



From Local & Imported Goods



Broadloom



LIMITED WEAR WARRANTY 15 YEAR



BELGOTEX GUARANTEE 5 YEAR



ANTI ALLERGENIC



REUSE REDUCE RECYCLE



COLOURFAST MF BLEACH RESISTANT



COLOURFAST MF ECO BLEACH RESISTANT



bsi ISO 9001 Quality Management Systems CERTIFIED



bsi ISO 14001 Environmental Management CERTIFIED



bsi ISO 45001 Occupational Health and Safety Management CERTIFIED



Commercial



Institution



Modular



Eco-Friendly

## Bill of Quantities

- Belgotex BERBER POINT 650 at 4.2m wide  $\pm 6$ mm ResinBac medium/general commercial broadloom and tiles are manufactured from Stainproof Miracle Fibre (Polypropylene).
- This product is to be laid in accordance with the SANS 10186 fitting code of practice.
- Belgotex BERBER POINT 650 ResinBac tiles to be installed in tessellated format only.
- Belgotex recommends the use of carpet protector mats where castor wheels are used.
- 5 year guarantee and 15 year warranty.
- Made in South Africa.
- Green Tag level A Gold rated certification.

\*All product names and logos are trademarks of BELGOTEX FLOORCOVERINGS® (Pty) Ltd. © BELGOTEX FLOORCOVERINGS® (Pty) Ltd. All rights reserved. Warranty and guarantee to limitations and conditions. For details contact BELGOTEX FLOORCOVERINGS® (Pty) Ltd.