

B.



Berber Point 920

Commercial:
Broadloom
& Carpet Tile

Shape Shifting.

The world-renowned Berber Point has always been sought after for its durability and performance. Now, in a reconceived format, the new Berber Point 920 is the first Belgotex commercial range to offer geometric shapes.





Berber Point 920

Offering limitless combinations, this exciting update to the tried and trusted tough as nails floorcovering remains the benchmark in versatile, rugged and reliable flooring, which is why it is still the no.1 choice for architects.

Use Classification	Heavy Commercial
Construction	Structured Needle-punch
Product Description	Heavy Commercial Structured Needle-punch
Recycled Content	Face Fibre – Blend of Stainproof Miracle Fibre & Stainproof Miracle Fibre Eco (Certain Colours) Stainproof Miracle Fibre (Polypropylene)
Fibre Type	4.2m**
Standard Size - Broadloom	50x50cm**
Standard Size - Tile	ResinBac
Backing - Broadloom/Shapes	ResinBac and NexBac
Backing - Tile/Plank	± 7mm on ResinBac
Total Thickness	± 7.5mm on NexBac
Total Mass	± 1317g/m ² on ResinBac* ± 3877g/m ² on NexBac*
Fire Index	2 (SANS 10177-4) on ResinBac 3 (SANS 10177-4) on NexBac
Colour Fastness To:	
i) Light	7 (ISO 105-B02)
ii) Rubbing (Wet)	4-5 (ISO 105-X12)
iii) Rubbing (Dry)	4-5 (ISO 105-X12)
iv) Water	4-5 (ISO 105-E01)
Electrostatic Propensity	≤ 2 kV (DIN 66095 Part 4)
Static Control	Permanent
VOC Tested	Pass (GBCSA/GBCA)
Impact Sound Insulation (ResinBac)	21 dB (EN ISO 10140)

* Weighted average.

** Also available in 25x100cm planks, 100x100cm tile & Shapes (Chevron left & Chevron right/ Hexagon/Right-angle Triangle as per the diagram). Belgotex BERBER POINT 920 to be installed as follows 25x100cm = Herringbone, 100x100cm = Tessellated & Shapes = Belgotex fitting instructions. As these are custom offerings they are not standard, minimum production quantities apply. Please contact your nearest Belgotex representative for more information on this.

Bill of Quantities

- Belgotex BERBER POINT 920 at 4.2m width ResinBac broadloom & BERBER POINT 920 at 50x50cm ResinBac/NexBac tiles are manufactured from Stainproof Miracle Fibre (Polypropylene).
- This product is to be laid in accordance with the SANS 10186 fitting code of practice.
- Belgotex BERBER POINT 920 ResinBac and NexBac tiles to be installed in tessellated format only.
- Belgotex recommends the use of carpet protector mats where castor wheels are used.
- 5 year guarantee and 10 year warranty.
- Made in South Africa.
- Green Tag A level certification.

SABS
ISO 9001

SABS
ISO 14001

SABS
ISO 45001





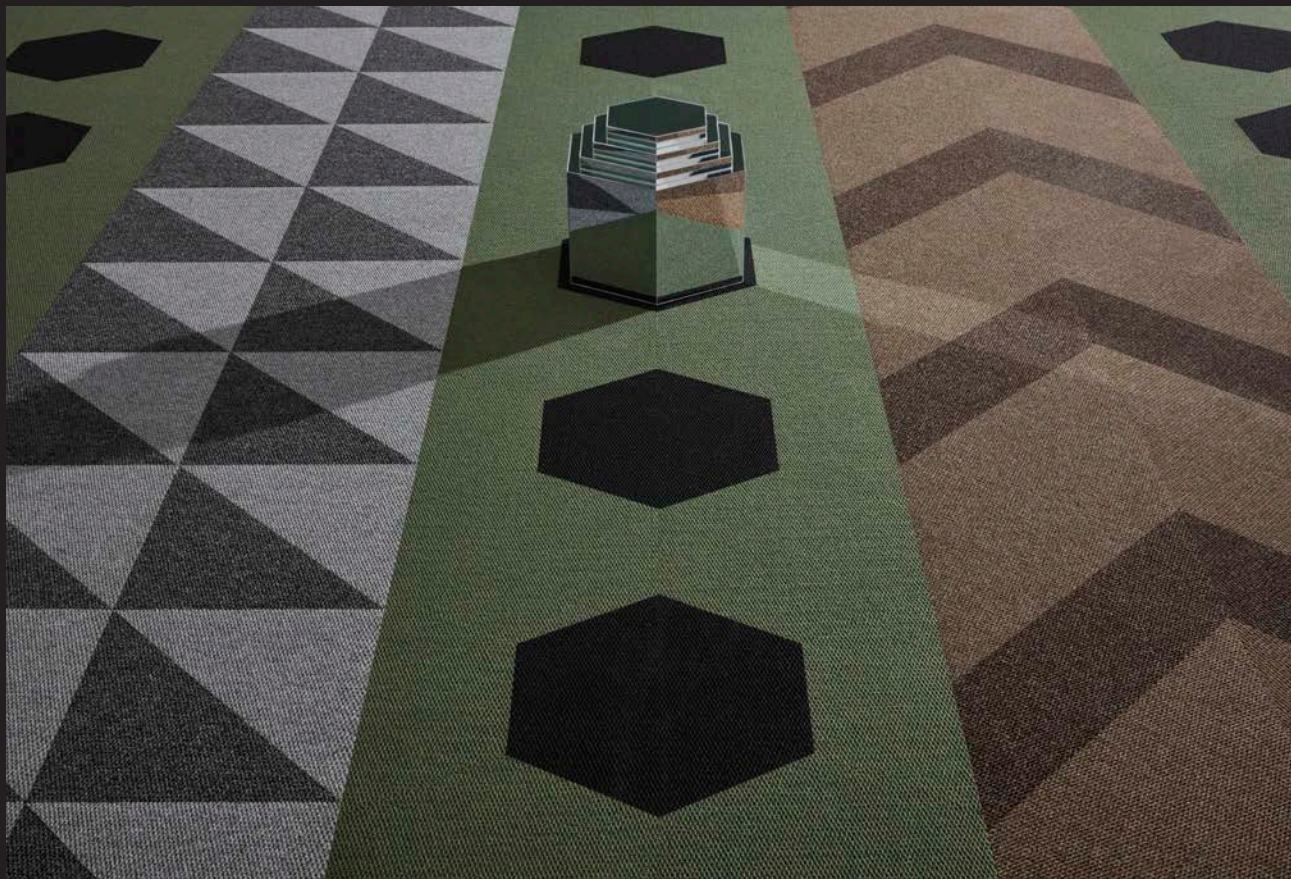
Range: Berber Point 920 | Calibrate and Founder

Beyond Conventional

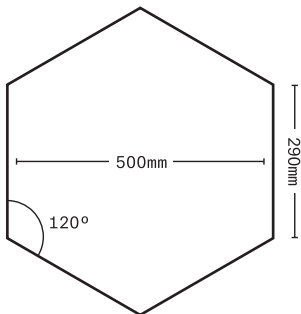
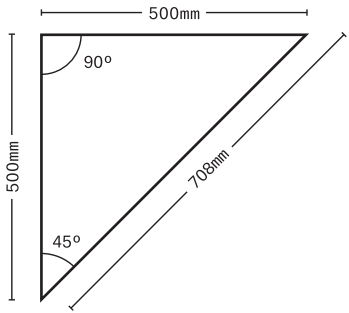
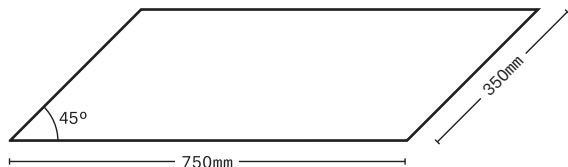

Berber Point 920 is an evolution. A product that has stood the test of time has now shed its skin to offer the commercial space an exploratory carpet experience. The new range delivers variety and creative flex without losing the robust, hard-working attribute that its reputation has been built upon.



**Versatile, rugged and reliable,
Berber Point 920 still remains
the NO.1 choice for architects.**



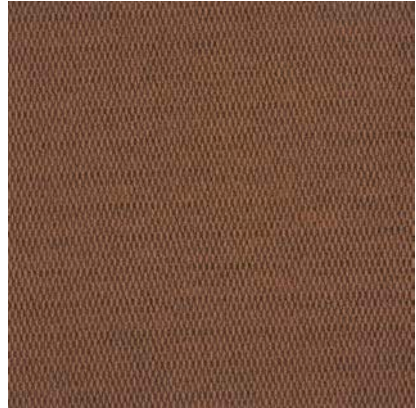
Versatility allows you to create visual displays that go beyond the conventional and defy the norm.

Heavy Commercial	Hexagon	Right Angle Triangle
<p>With inspiration gained from every shape, colour and turn, and drawing its creativity from the world, it is no wonder Berber Point 920 is the best choice for today's high-paced lifestyles.</p>	 <p>Standard Size - Tile 50x50cm*</p>	
Chevron - Left	Chevron - Right	
		

Please request an installation guidelines document for more information on Berber Point 920 Shapes.



Berber Point 920 Range.



Affinity | L = 29.15 Y = 5.90



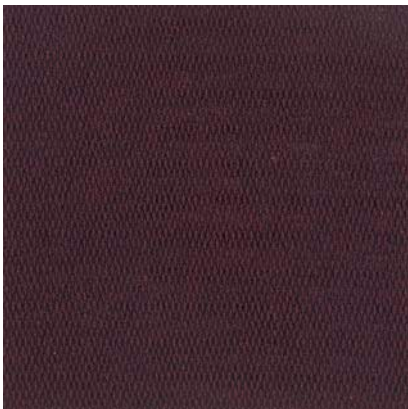
Beyond | L = 21.56 Y = 3.40



Calibrate | L = 32.70 Y = 7.40



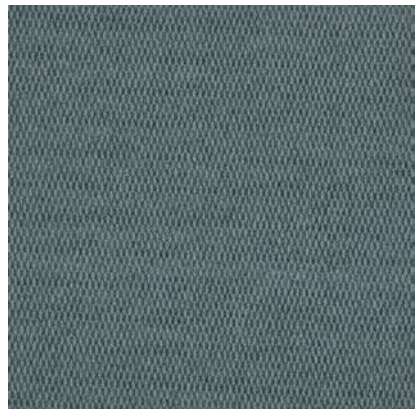
Core | L = 8.76 Y = 0.97



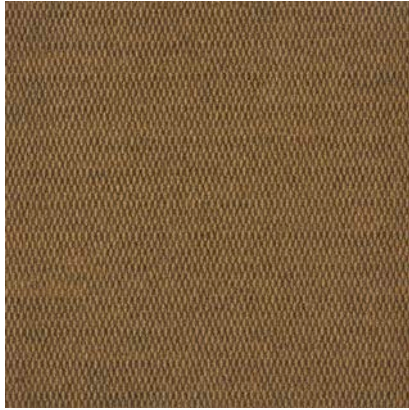
Elevate | L = 12.68 Y = 1.51



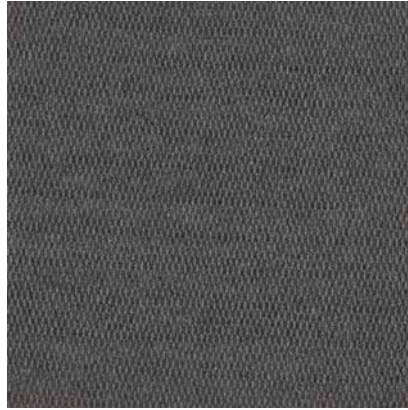
Founder | L = 25.46 Y = 4.57



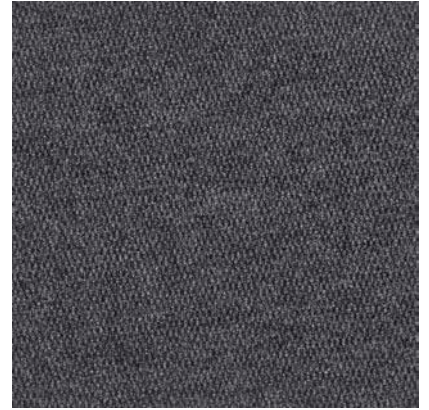
Legacy | L = 57.06 Y = 24.98



Channel | L = 30.95 Y = 6.63



Paradigm | L = 26.38 Y = 4.88



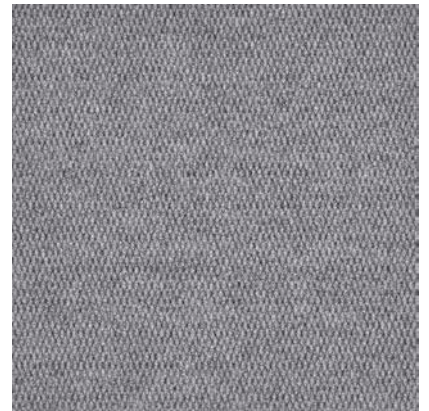
Polish | L = 33.76 Y = 7.89



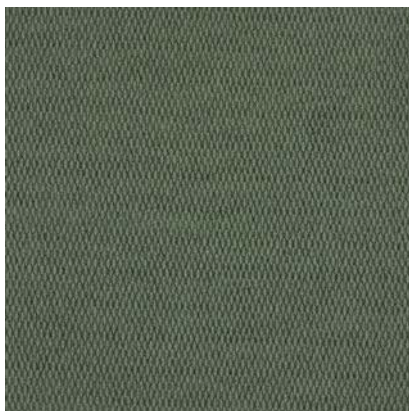
Redefine | L = 26.57 Y = 4.94



Resilience | L = 39.43 Y = 10.91



Scalable | L = 40.49 Y = 11.55



Sequester | L = 49.23 Y = 17.78



Sphere | L = 16.65 Y = 2.23



Tactic | L = 17.74 Y = 2.46

What is LRV?

Light Reflectance Value (LRV) is the total quantity of visible light reflected by a surface, e.g. floorings, ceilings, walls and furniture, at the wavelengths and directions when illuminated by a light source.

The LRV scale runs from 0, which is a perfectly absorbing surface that could be assumed to be totally black, up to 100, which is a perfectly reflective surface that could be considered to be the perfect white. Because of practical influences in any application, black is always greater than 0 and white never equals 100. Additional to colour, the structure and gloss of the product or surface are determining factors of LRV.

The LRV value is directly measured according to the British Standard 8493:2008 "Light Reflectance Value (LRV) of a surface".

The L*-value (colour depth) is sometimes used to calculate visual contrast, but should not be mixed up with the LRV as it is significantly higher. However, the L*-value can be used to calculate the LRV of a surface (also referred to as the "p-value" (rho), as a close approximation of the directly measured LRV according to BS 8493.

B.

Good to Know.

It is important to take into account that the installation of a floor covering with a high LRV (>15%) will require the implementation of a specifically adapted maintenance schedule in order to guarantee a satisfactory visual appearance for the product.

**Belgotex designs, manufactures
and delivers quality floors that
endure the speed of life.**

Made in Our Big Green Factory.



Belgotex was awarded 6 Stars in South Africa's first custom Green Star SA – Existing Building Performance (EBP) rating from the Green Building Council of South Africa (GBCSA). The certification recognises 'World Leadership' at our Pietermaritzburg-based factory for sustainability practices in all aspects of our plant and carpet manufacturing operations.

B.