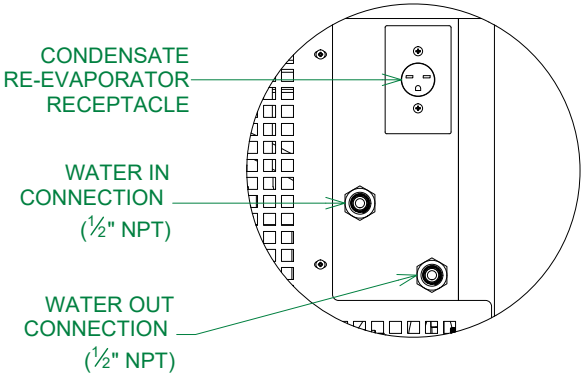


GENERAL NOTES:

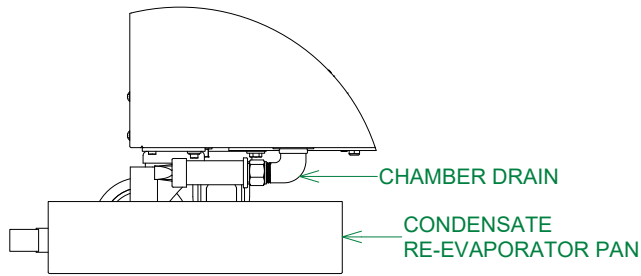
- 1. UNIT WEIGHT: 1010 lb (458 kg)
- 2. SHIPPING WEIGHT: 1597 lb (724.4 kg)
- 3. CRATED EXTERIOR DIMENSIONS: 86" WIDE X 89" TALL X 48" DEEP
- 4. HEAT REJECTION TO ATMOSPHERE:
  - PEAK HEAT REJECTION = 36,860 Btu/hr = 10.8 kWh
  - AVERAGE HEAT REJECTION = 19,500 Btu/hr = 5.7 kWh
- 5. AMBIENT OPERATING CONDITION:
  - TEMPERATURE = +64.5 °F TO +86 °F (+18 °C TO +30 °C)
  - RELATIVE HUMIDITY < 75%
- 6. (2) SHELVES INCLUDED - ADJUSTABLE BY ½" INCREMENTS

WATER REQUIREMENTS

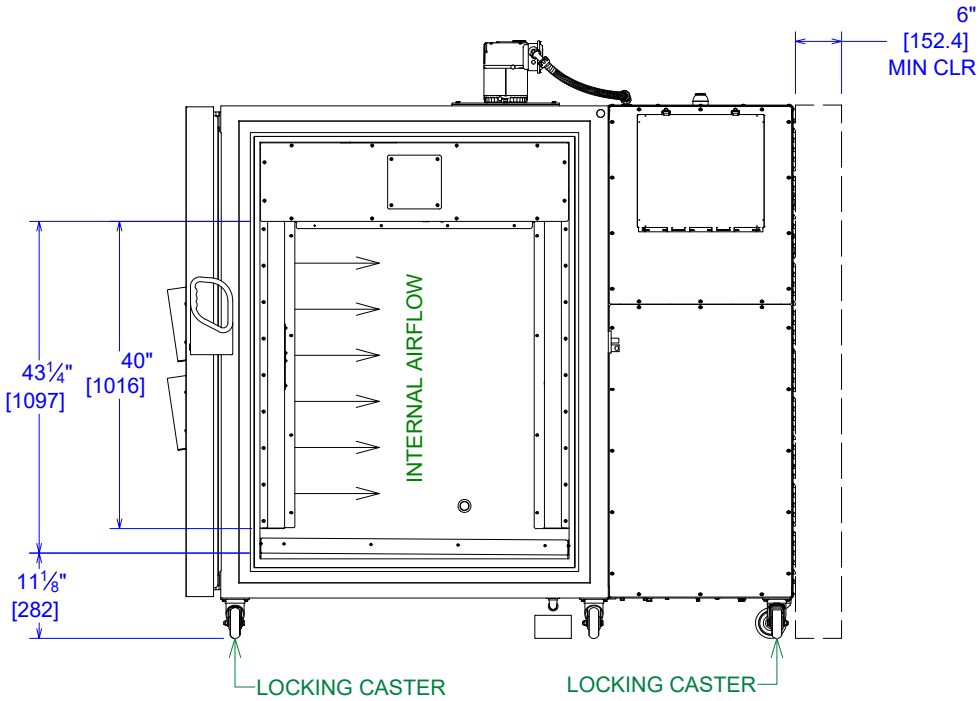
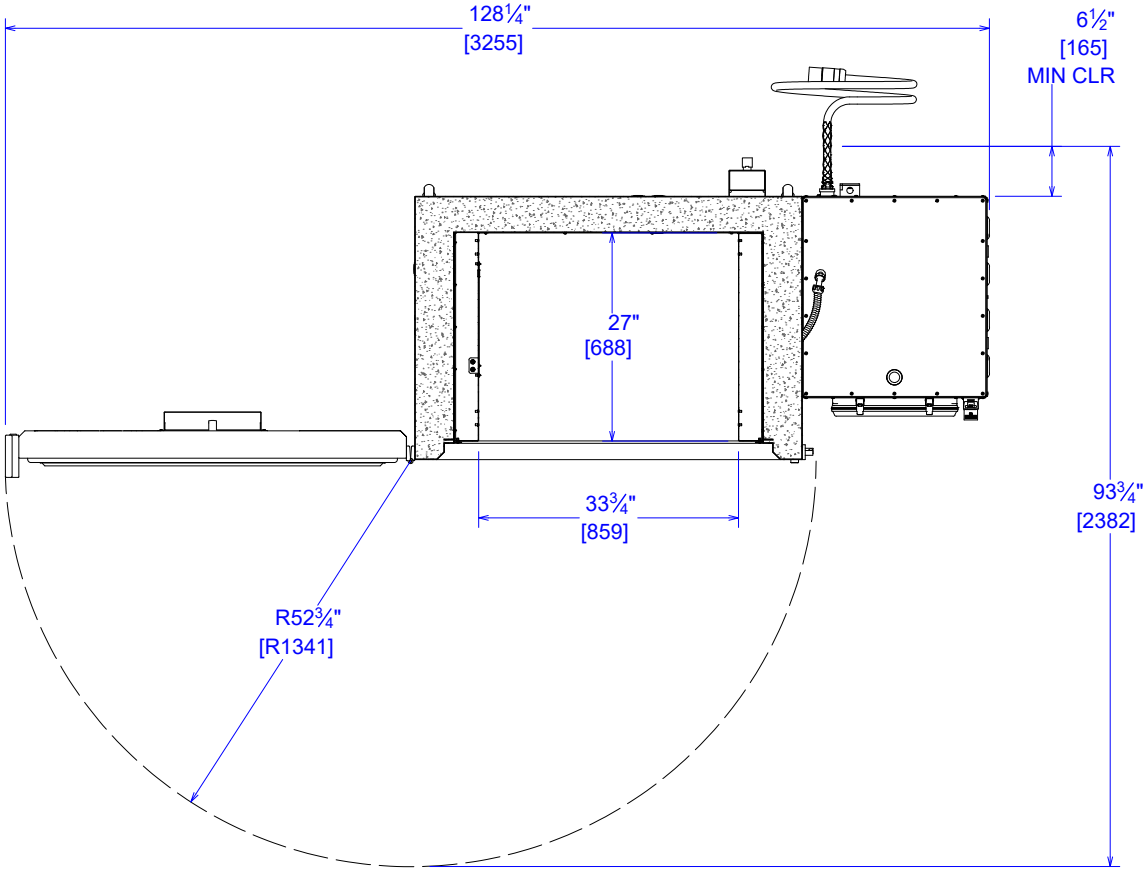
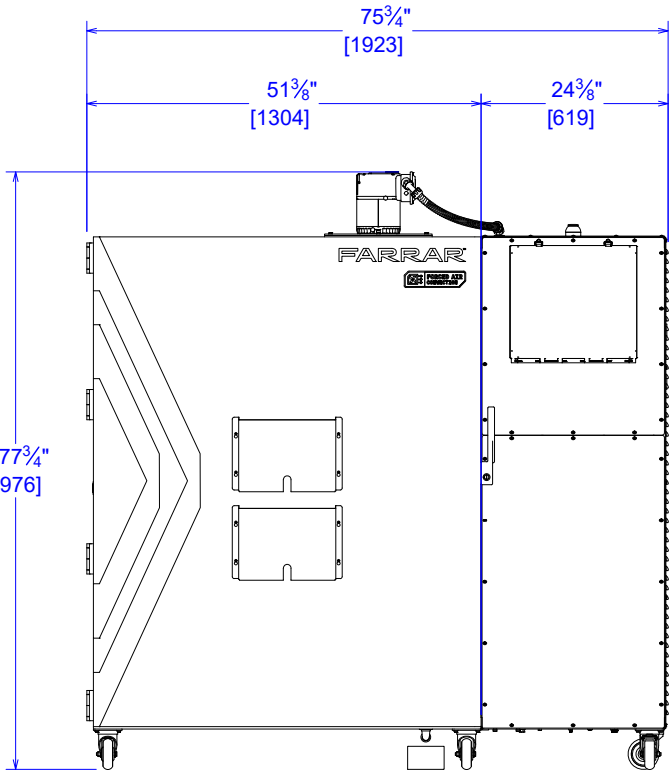
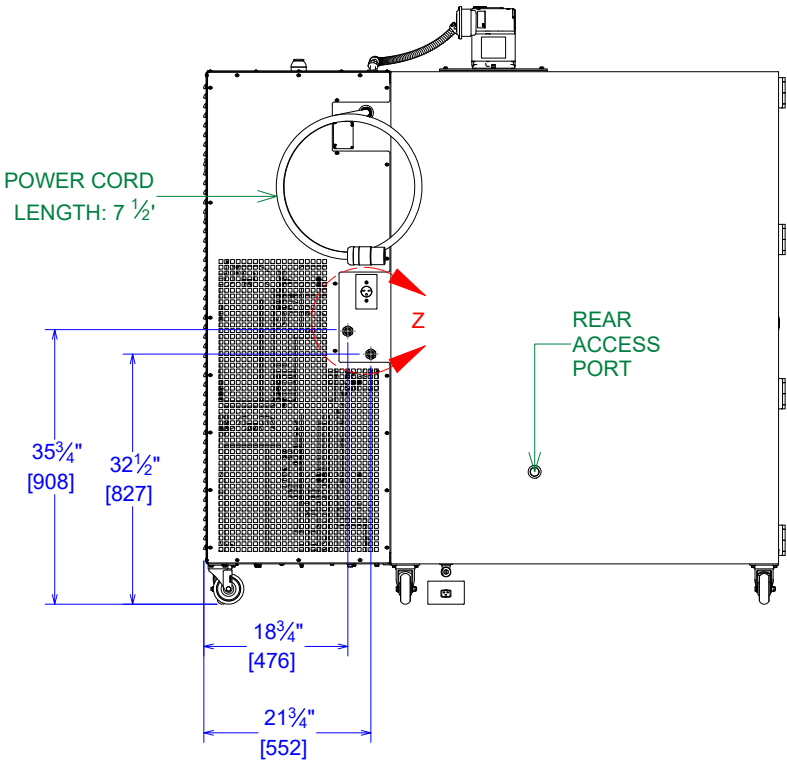
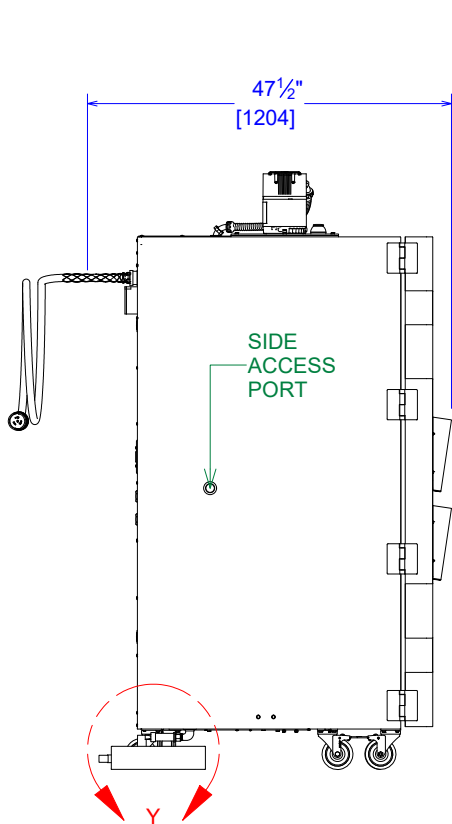
- 1. PRESSURE DIFFERENTIAL ≈ 20 psi (1.38 bar)
- 2. WATER TEMPERATURE ≤ (60 °F/16 °C)
  - WATER SUPPLY FLOW RATE = 6 gpm (22.7 LPM)
- 3. WATER CONNECTIONS ARE ½" FNPT
  - FOR 4105 UNITS, A ½" MNPT x M20 x 1.5
  - FEMALE ADAPTER IS PROVIDED
- 4. FLEXIBLE HIGH PRESSURE HOSE REQUIRED




DETAIL 1-Z  
RECEPTACLE DETAIL



DETAIL 1-Y  
DRAIN DETAIL



POWER REQUIREMENTS					TOLERANCES	THIS DOCUMENT CONTAINS PROPRIETARY INFORMATION AND SUCH IS NOT TO BE DISCLOSED TO OTHERS FOR ANY PURPOSE OR USED FOR MANUFACTURING PURPOSES WITHOUT THE WRITTEN PERMISSION OF TRANE TECHNOLOGIES.	SPECIFICATIONS, 4000, WATER-COOLED		
WATER-COOLED	ELECTRICAL REQUIREMENTS	BREAKER SIZE	PLUG SPEC	MATING RECEPTACLE SPEC			SIZE	DWG NO	
							B	SPEC SHEET, 4000, WC	
4102	208 VAC - 3 PHASE - 60 HZ 31 FLA: 3 WIRES + GND	40A	HUBBELL CS8365C LOCKING-50A 3P-250VAC 3P4W GND	HUBBELL - CS8369	.X ±.1 .XX ±.03 .XXX ±.015 .XXXX ±.0005 ANGLE ±1° FRACTIONAL ±1/16 DIMENSIONS ARE IN <b>INCHES</b> UNLESS OTHERWISE SPECIFIED	 30765 OH-7   MARIETTA, OH   45750   ph. 740.374.8300   fx. 740.374.8310	DRAWN BY B. IRWIN	DRAWN DATE 4/3/2023	
4105 (EUROPE)	400 VAC - 3 PHASE - 50HZ 24 FLA: 4 WIRES + GND	30A	IEC60309 6 HOUR PLUG, 4P 5W, 415VAC, 32A	30A 6 HOUR 4P 5W			APPROVED BY M. DONNELLY	APPROVAL DATE 4/3/2023	
							REFERENCE N/A	SCALE 1 / 25	SHEET 1 OF 1