

GENERAL NOTES:

1. THE INTERNAL FORCED AIR CIRCULATION SHOWN IS FOR SYSTEM "A" (CLOCKWISE). SYSTEM "B" (COUNTER CLOCKWISE) IS A MIRROR TO SYSTEM "A".
2. HEAT REJECTION TO ATMOSPHERE @ -80 °C:
MAXIMUM
= 28,000 Btu/hr (8.2 kW/hr) TO WATER
= 1800 Btu/hr (0.52 kW/hr) TO AMBIENT
MINIMUM
NORMAL OPERATION, 1 SYSTEM @ 75-80%
= 12,000 Btu/hr (3.5 kW/hr) TO WATER
> 900 Btu/hr (0.26 kW/hr) TO AMBIENT
AVERAGE - NORMAL OPERATION, 1-2 DOOR OPENING/hr, 1 SYSTEM DEFROST
= 14,000 Btu/hr (4.1 kW/hr) TO WATER
= 1,000 Btu/hr (0.29 kW/hr) TO AMBIENT
3. INCLUDES (2) FLOOR ANCHOR BRACKETS.
(TO BE INSTALLED BY CUSTOMER)

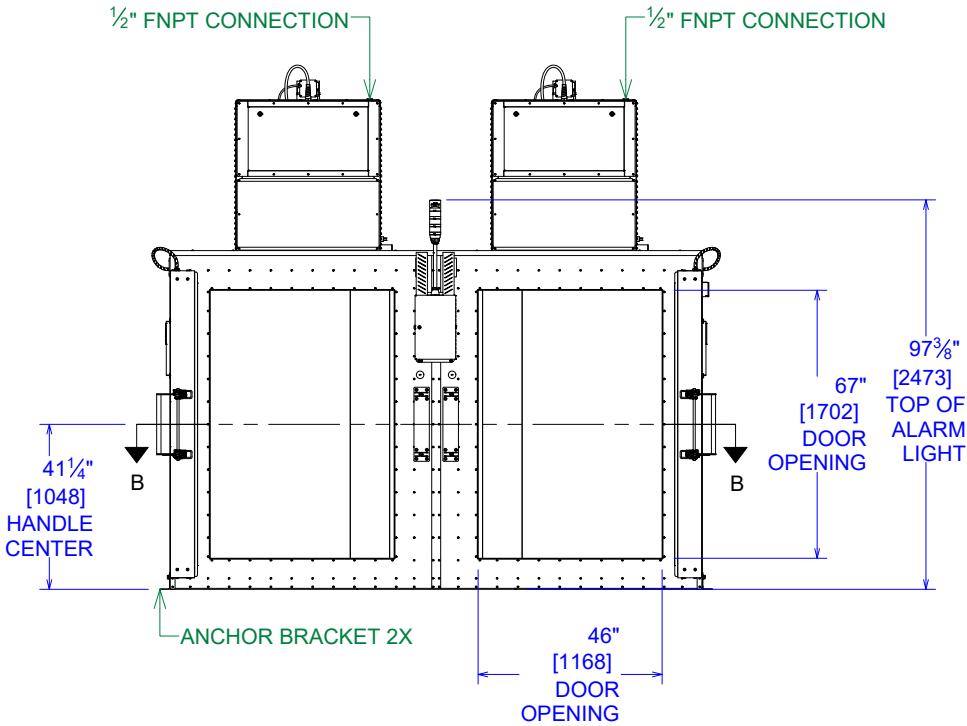
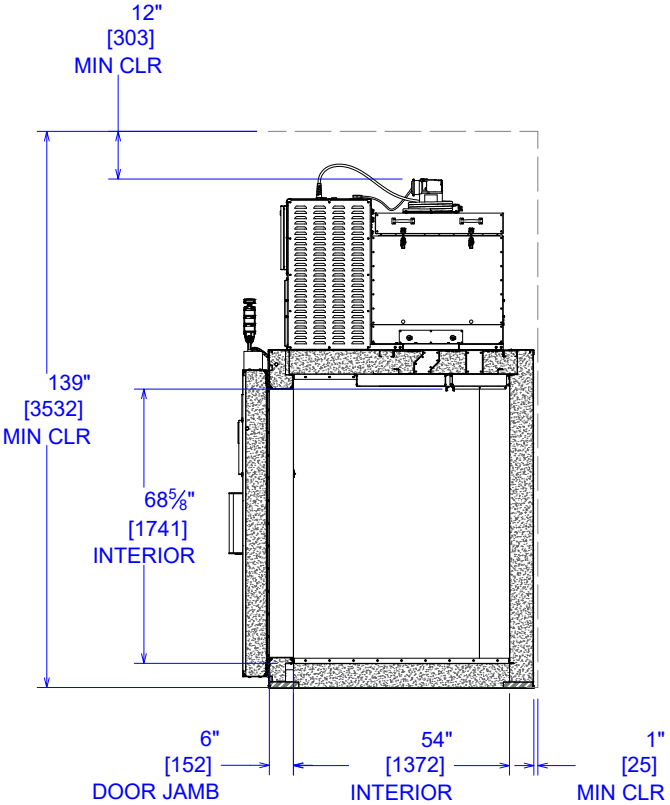
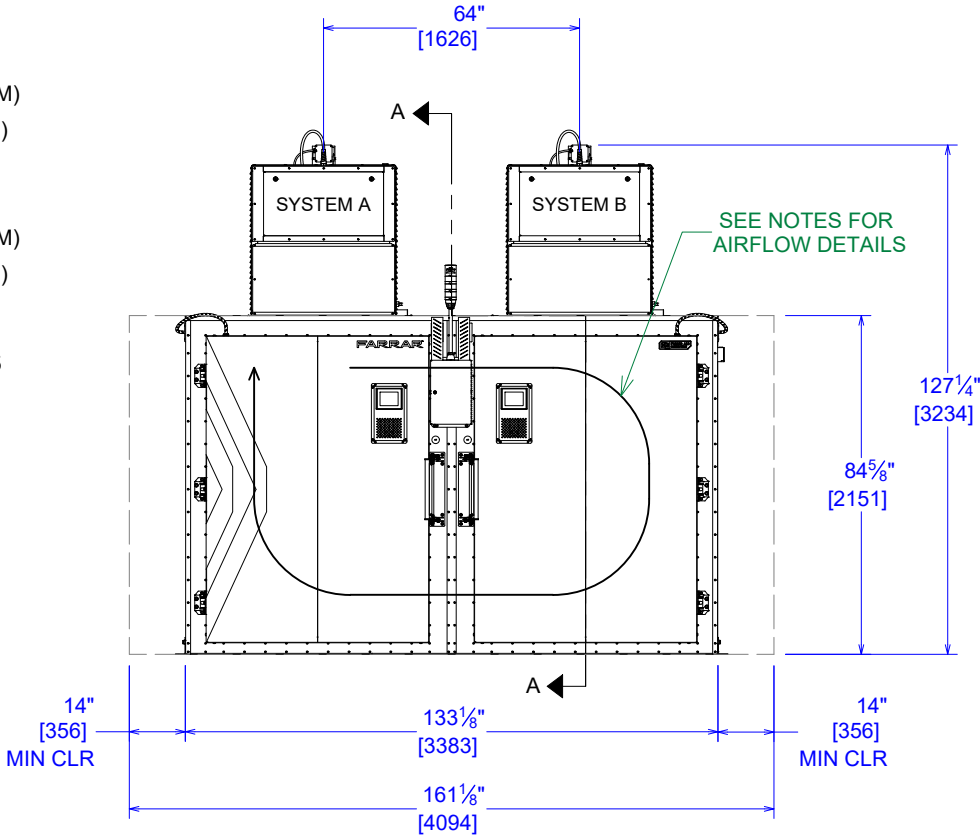
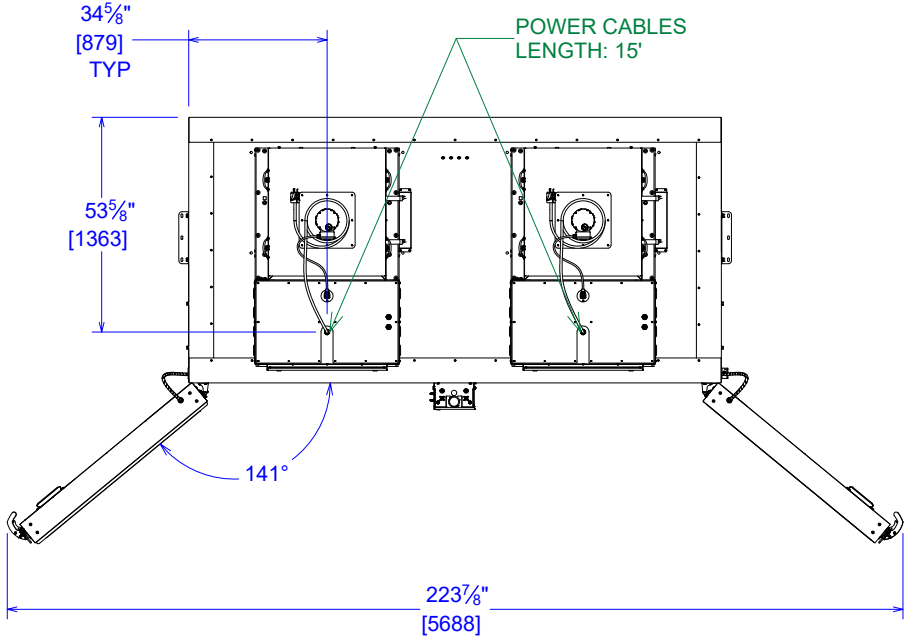
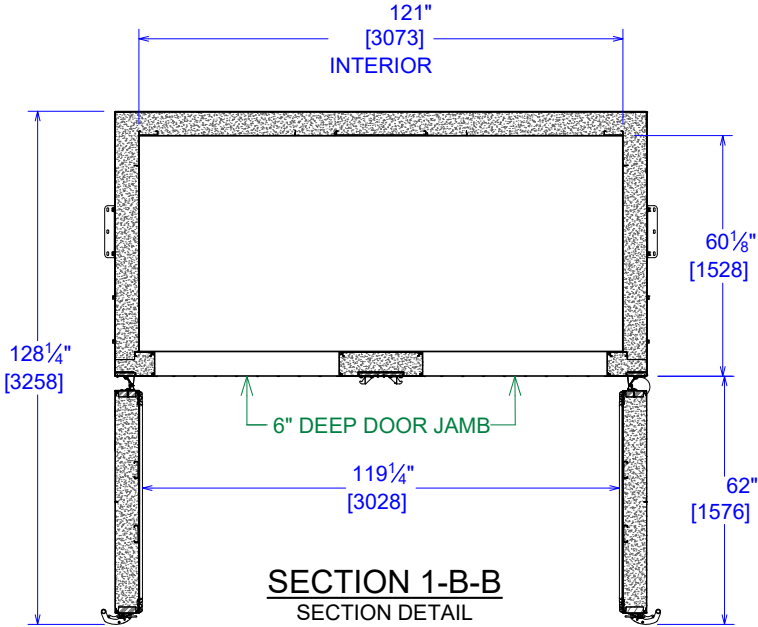
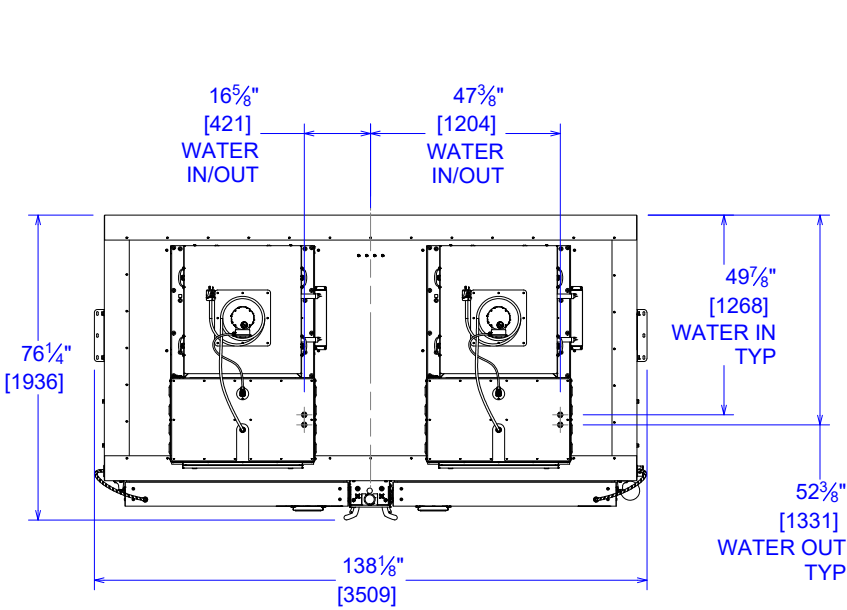
WATER REQUIREMENTS:

PRESSURE DIFFERENTIAL ≈ 20 psi (1.4 bar)

1. TOWER WATER*
WATER TEMPERATURE ≤ 30 °C
MAXIMUM FLOW RATE = 7.0 gpm (27 LPM)
AVERAGE FLOW RATE = 4.5 gpm (8 LPM)
2. CHILLED WATER*
WATER TEMPERATURE ≤ 10 °C
MAXIMUM FLOW RATE = 3.5 gpm (14 LPM)
AVERAGE FLOW RATE = 2.0 gpm (8 LPM)
3. WATER CONNECTIONS ARE ½" FNPT.
FOR ULCi UNITS, A ½" MNPT x M20 x 1.5 FEMALE ADAPTER IS PROVIDED.

MATERIAL HANDLING:

1. CART SYSTEM OPTION:
FEATURES (4) STAINLESS STEEL PRODUCT CARTS, (4) GUIDES, AND (2) FLOOR INSERTS. CARTS INCLUDE (6) SHELVES WITH SWIVEL-LOCKING CASTERS, FORK POCKETS AND CANE PIN FOR SECURING IN FREEZER.
2. DRAWER SYSTEM OPTION:
FEATURES (2) STAINLESS STEEL RACKING SYSTEMS WITH (24) SLIDING DRAWER PANS AND (6) TAILGATE-STYLE INNER DOORS EACH.



SECTION 1-A-A
LEFT SECTION DETAIL

| POWER REQUIREMENTS | | | | | TOLERANCES .x ±.1 .xx ±.03 .xxx ±.015 .xxxx ±.0005 ANGLE ±1° FRACTIONAL ±1/16 DIMENSIONS ARE IN INCHES UNLESS OTHERWISE SPECIFIED | THIS DOCUMENT CONTAINS PROPRIETARY INFORMATION AND SUCH IS NOT TO BE DISCLOSED TO OTHERS FOR ANY PURPOSE OR USED FOR MANUFACTURING PURPOSES WITHOUT THE WRITTEN PERMISSION OF TRANE TECHNOLOGIES. | SPECIFICATIONS, ULC-259, AIR-COOLED | | |
|--------------------------|--|--------------|---------------------------------|--|--|---|-------------------------------------|---------------------------|--------------|
| UNIT | ELECTRICAL REQUIREMENTS | BREAKER SIZE | PLUG SPEC | RECEPTACLE SPEC | | | SIZE | DWG NO | REV |
| ULC-259 (DOMESTIC) | 208 VAC - 1 PHASE - 60 Hz 24 FLA: 2 WIRES + GND | 30A | NEMA L6-30P, LOCKING PLUG | L6-30P FEMALE RECEPTACLE/CONNECTOR, 2 L, 1GND | | | B | ULC-259, AIR-COOLED | 1 |
| ULCi-259 (INTERNATIONAL) | 230 VAC - 1 PHASE - 50 Hz 24 FLA: 2 WIRES + GND | 32A | IEC 60309 6 HOUR PLUG, 2P 3W | IEC 60309- 6 HOUR RECEPTACLE/CONNECTOR, 2P 3W (1L, 1N, 1GND) | | | DRAWN BY B. IRWIN | DRAWN DATE 1/7/2023 | |
| | | | | | | | APPROVED BY M. DONNELLY | APPROVAL DATE 1/7/2023 | |
| | | | | | | | REFERENCE N/A | SCALE 1 / 48 | SHEET 1 OF 1 |