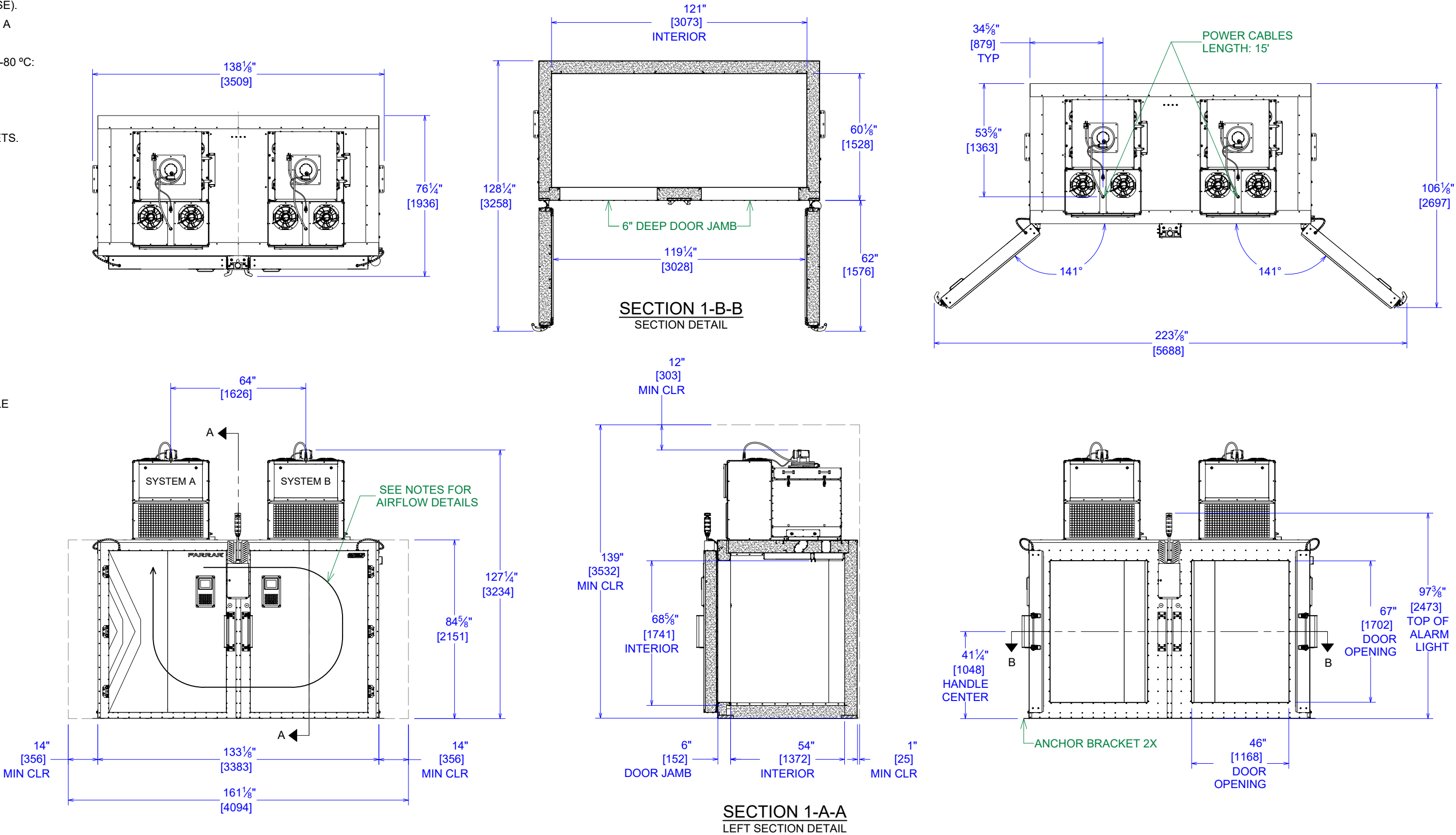


GENERAL NOTES:

1. THE INTERNAL FORCED AIR CIRCULATION SHOWN IS FOR SYSTEM "A" (CLOCKWISE). SYSTEM "B" (COUNTER CLOCKWISE) IS A MIRROR TO SYSTEM "A".
2. HEAT REJECTION TO ATMOSPHERE @ -80 °C:
MAXIMUM* = 28,000 Btu/hr (8.2 kW/hr)
MINIMUM = 12,000 Btu/hr (3.5 kW/hr)
AVERAGE = 14,000 Btu/hr (4.1 kW/hr)
3. INCLUDES (2) FLOOR ANCHOR BRACKETS. (TO BE INSTALLED BY CUSTOMER)

MATERIAL HANDLING:

1. CART SYSTEM OPTION:
FEATURES (4) STAINLESS STEEL PRODUCT CARTS, (4) GUIDES, AND (2) FLOOR INSERTS. CARTS INCLUDE (6) SHELVES WITH SWIVEL-LOCKING CASTERS, FORK POCKETS AND CANE PIN FOR SECURING IN FREEZER.
2. DRAWER SYSTEM OPTION:
FEATURES (2) STAINLESS STEEL RACKING SYSTEMS WITH (24) SLIDING DRAWER PANS AND (6) TAILGATE-STYLE INNER DOORS EACH.



POWER REQUIREMENTS					TOLERANCES .x ±.1 .xx ±.03 .xxx ±.015 .xxxx ±.0005 ANGLE ±1° FRACTIONAL ±1/16 DIMENSIONS ARE IN INCHES UNLESS OTHERWISE SPECIFIED	THIS DOCUMENT CONTAINS PROPRIETARY INFORMATION AND SUCH IS NOT TO BE DISCLOSED TO OTHERS FOR ANY PURPOSE OR USED FOR MANUFACTURING PURPOSES WITHOUT THE WRITTEN PERMISSION OF TRANE TECHNOLOGIES.	SPECIFICATIONS, ULC-259, AIR-COOLED			
UNIT	ELECTRICAL REQUIREMENTS	BREAKER SIZE	PLUG SPEC	RECEPTACLE SPEC			SIZE	DWG NO	REV	
ULC-259 (DOMESTIC)	208 VAC - 1 PHASE - 60 Hz 24 FLA: 2 WIRES + GND	30A	NEMA L6-30P, LOCKING PLUG	L6-30P FEMALE RECEPTACLE/CONNECTOR, 2 L, 1GND			B	ULC-259, AIR-COOLED	1	
ULCi-259 (INTERNATIONAL)	230 VAC - 1 PHASE - 50 Hz 24 FLA: 2 WIRES + GND	32A	IEC 60309 6 HOUR PLUG, 2P 3W	IEC 60309- 6 HOUR RECEPTACLE/CONNECTOR, 2P 3W (1L, 1N, 1GND)			<div><div>FARRAR™</div><div>TRANE TECHNOLOGIES™</div></div>		DRAWN BY B. IRWIN	DRAWN DATE 1/7/2023
							APPROVED BY M. DONNELLY		APPROVAL DATE 1/7/2023	
					30765 OH-7 MARIETTA, OH 45750 ph. 740.374.8300 fx. 740.374.8310		REFERENCE N/A	SCALE 1 / 48	SHEET 1 OF 1	