

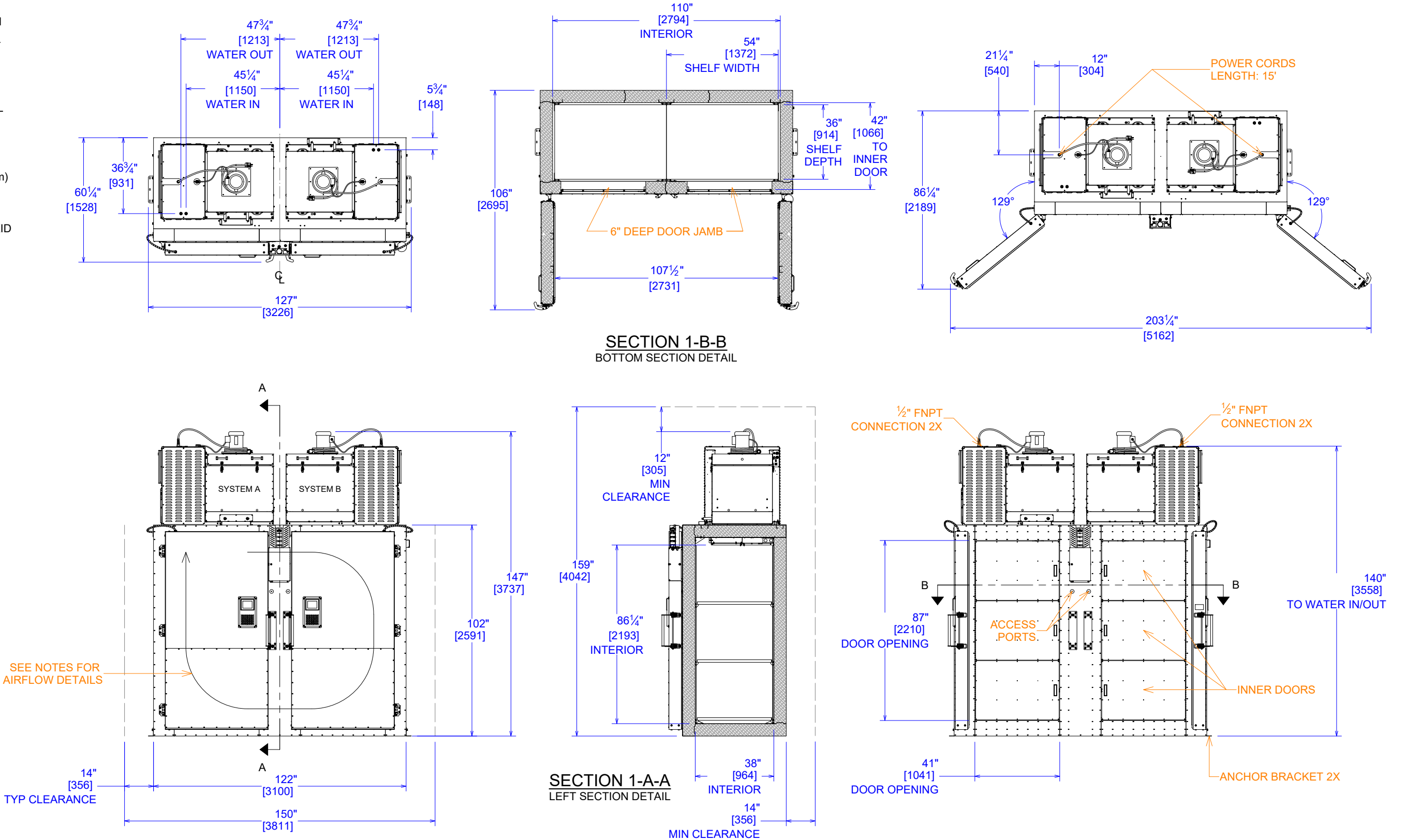
GENERAL NOTES

- 1. THE INTERNAL FORCED AIR CIRCULATION SHOWN IS FOR SYSTEM "A" (CLOCKWISE). SYSTEM "B" (COUNTER CLOCKWISE) IS A MIRROR TO SYSTEM "A".
- 2. STANDARD OPTION INCLUDES (6) ADJUSTABLE SOLID 304 STAINLESS STEEL SHELVES AND (6) INNER DOORS TO MINIMIZE AIR EXCHANGE WHEN INTERFACING WITH PRODUCT.
- 3. SHELVES ARE ADJUSTABLE BY 1" (25.4 mm)
- 4. OTHER OPTIONS INCLUDE MONITORING, WIDE RANGE TEMPERATURE, MODULAR CART SYSTEM, AND STAINLESS STEEL SKID OPTION FOR FORKLIFTS.
- 5. HEAT REJECTION TO WATER @ -80 °C:
MAXIMUM* = 28,000 Btu/hr (8.2 kW/hr)
MINIMUM = 12,000 Btu/hr (3.5 kW/hr)
AVERAGE = 14,000 Btu/hr (4.1 kW/hr)


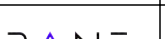
WATER REQUIREMENTS

PRESSURE DIFFERENTIAL ≈ 20 psi (1.4 bar)

- 1. TOWER WATER*
WATER TEMPERATURE ≤ 30 °C
MAXIMUM FLOW RATE = 7.0 gpm (27 LPM)
AVERAGE FLOW RATE = 4.5 gpm (8 LPM)
- 2. CHILLED WATER*
WATER TEMPERATURE ≤ 10 °C
MAXIMUM FLOW RATE = 3.5 gpm (14 LPM)
AVERAGE FLOW RATE = 2.0 gpm (8 LPM)
- 3. WATER CONNECTIONS ARE ½" FNPT.
FOR ULCi UNITS, A ½" MNPT x M20 x 1.5 FEMALE ADAPTER IS PROVIDED.



*TOTAL FOR BOTH REFRIGERATION SYSTEMS

POWER REQUIREMENTS					TOLERANCES .x ±.1 .xx ±.03 .xxx ±.015 .xxxx ±.0005 ANGLE ±1° FRACTIONAL ±1/16 DIMENSIONS ARE IN INCHES UNLESS OTHERWISE SPECIFIED	THIS DOCUMENT CONTAINS PROPRIETARY INFORMATION AND SUCH IS NOT TO BE DISCLOSED TO OTHERS FOR ANY PURPOSE OR USED FOR MANUFACTURING PURPOSES WITHOUT THE WRITTEN PERMISSION OF TRANE TECHNOLOGIES. <div><div></div><div></div></div>	SPECIFICATIONS, ULC, WATER-COOLED			
UNIT	ELECTRICAL REQUIREMNTS	BREAKER SIZE	PLUG SPEC	RECEPTACLE SPEC			SIZE	DWG NO	REV	
ULC (DOMESTIC)	230 VAC - 1 PHASE - 60 HZ 24 FLA: 2 WIRES + GND	30A	NEMA L6-30P, LOCKING PLUG	L6-30P FEMALE RECEPTACLE/CONNECTOR, 2 L, 1GND			B	ULC, WATER-COOLED	2	
ULCi (INTERNATIONAL)	230 VAC - 1 PHASE - 50HZ 24 FLA: 2 WIRES + GND	32A	IEC 60309 6 HOUR PLUG, 2P 3W	IEC 60309- 6 HOUR RECEPTACLE/CONNECTOR, 2P 3W (1L, 1N, 1GND)			DRAWN BY B. IRWIN DRAWN DATE 1/20/2022 APPROVED BY T. LYDICK APPROVAL DATE 1/20/2022			
					30765 OH-7 MARIETTA, OH 45750 ph. 740.374.8300 fx. 740.374.8310			REFERENCE N/A	SCALE 1/48	SHEET 1 OF 1