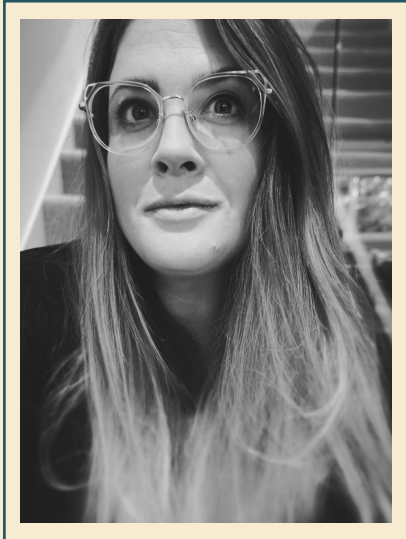


Ginni Lisk



Founder | Chief People Officer



At Further



- ▶▶ People & Culture consultancy products, services, delivery and client relationships.
- ▶▶ Internal People & Culture Operations.
- ▶▶ Further's marketing, content & overall brand presence.

Experience

Ginni is a commercially minded, experienced VP People who designs, implements and scales People & Culture roadmaps. Ginni uses design thinking to deliver prioritised People excellence and supports leaders to intentionally nurture fair & effective company culture.


Ginni's experience includes strategic People consultancy as a Partner at Unleashed, and fast-paced growth journeys at FinTech SaaS startup DueDil, supporting Forward Partners' early stage Venture Capital portfolio, and as VP People & People Strategy for international SaaS scaleup, ScreenCloud.

Ginni has a Masters in HR Management & Organisational Analysis, is a Mental Health First Aider and Associate Member of the CIPD.

In the world of People and HR, Ginni is an outlier. She has the unique ability to speak candidly and truthfully about complex people topics. Ginni has been a great sounding board for me in my journey building a people-first organisation and her insights have encouraged me to take big strides for the culture at Juno.

Ally Fekaiki : Founder & CEO | Juno

FURTHER ▶▶

- Cheese
 - Tattoos
 - A mid-century aesthetic
- 

- Hiccups
 - Marmite
 - Certified Assholes (As defined by [Bob Sutton](#))
- 