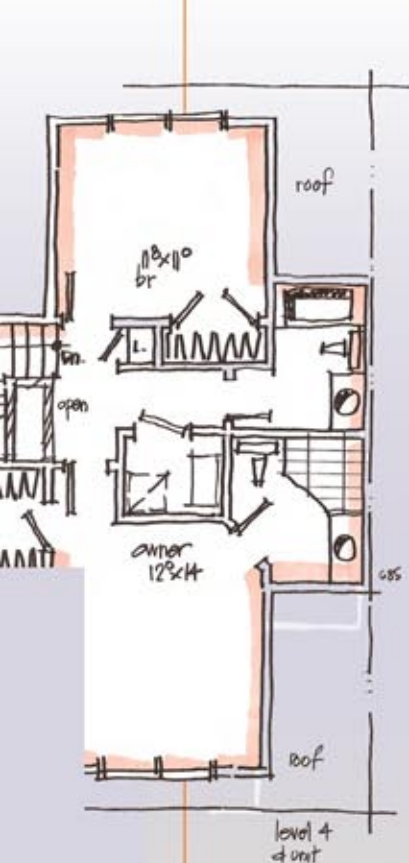
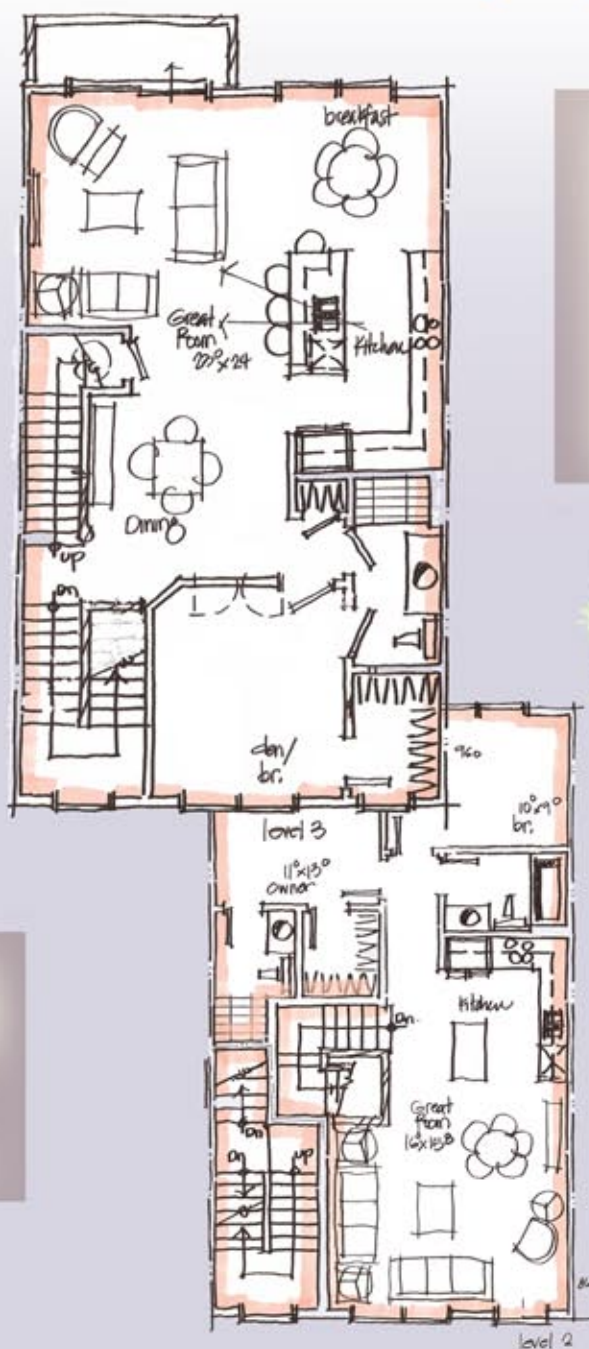


How about 1^{3/4} over 1^{3/4} ?



This solution enables us to create a 1212 sf 2br + den, 2 1/2 bath 1st level unit and a 1645 sf 3 br 3 bath upper level unit 3 1/2 story building.



In some cases the 2 over 2 is just more than you need - a small 1st level unit and too large a 2nd level unit. Maybe a rental or less than top flight location is calling for a slightly less expensive solution with a little more density (40' deep vs 50' deep).

