

the b asakusa

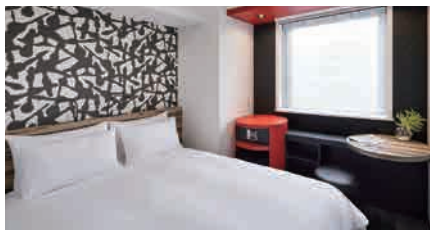
3-16-12 Nishiasakusa Taito-ku, Tokyo 111-0035 Japan
 Tel: +81-3-6284-7057 Fax: +81-3-6284-7059
 asakusa@theb-hotels.com

Access

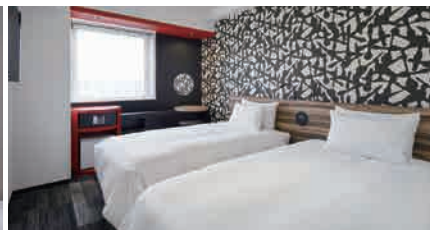
Tsukuba Express – Asakusa Station: Exit A2 – 1 minute walk
 Tokyo Metro Ginza Line – Tawaramachi Station: Exit 3 – 7 minute walk
 Tokyo Metro Ginza Line – Asakusa Station: Exit 3 – 9 minute walk
 Toei Subway Asakusa Line – Asakusa Station: Exit A4 – 9 minute walk
 Tokyo Station – 20 minutes by train
 Shinagawa station – 15 minutes by train

Guest Rooms

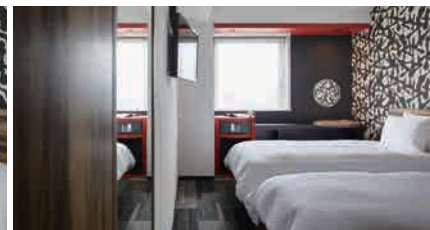
166 rooms
 Non Smoking only
 Smoking Area 1F
 Check-in: 15:00
 Check-out: 11:00



Double 17-18m² 80 rooms (3 – 12F)



Twin 21-32m² 86 rooms (2 – 12F)



"the b asakusa" is located on Kokusai Street, one of the main thoroughfares of Asakusa where many tourists both domestic and overseas mingle and meet. Located just a 1-minute walk from Tsukuba Express Asakusa Station, you'll also find the Tokyo Metro Ginza Line's Tawaramachi Station close by to connect you to stations throughout Tokyo. Popular sightseeing spots such as Kaminarimon, Hanayashiki Amusement Park, and Kappabashi Kitchen Town are all within walking distance.

Breakfast

the b lounge: 2F
 Opening hours: 6:30 – 10:00

Attractions

Senso-ji Temple, Kaminarimon Gate, Kappabashi Kitchen street,
 Nakamise Shopping Street, Tokyo Sky Tree, Ueno Onshi Koen, Ameyoko

Facilities

Free WiFi, Coffee Station (free), Net Station (free), Laundry Room,
 Ice Machine, Vending Machine, Parking Lot, Smoking Area (1F)