

# **FOLLOW-UP REPORT ON IMMUNIZATION WITH NIRSEVIMAB IN GALICIA**

**Dirección Xeral de Saúde Pública**

Data up to week 13, 2024 (31-03-2024)

Santiago de Compostela, 3 April 2024

## INDEX

1. NIRSEVIMAB.....	3
2. IMMUNIZATION COVERAGE .....	3
2.1. Immunization coverage in risk groups.....	3
2.2. Immunization coverage in catch-up group (born between 01-April and 24-September).....	4
2.3. Immunization coverage at birth (born from 25 September 2023).....	5
3. Evolution of the RSV epidemic wave.....	6
4. RSV hospitalization.....	7
4.1. Cohort of infants born between April and September.....	8
4.2. Infants less than 2 months .....	10
4.3. Infants less than 6 months .....	12
5. RSV HOSPITALIZATIONS IN CHILDREN ENTERING THEIR SECOND RSV SEASON AND ADULTS.....	14
5.1. Cohort of children born between April and March in their 2nd RSV season .....	15
5.2. Infants less than 2 years .....	17
5.3. Children 1 to 4 years old .....	19
5.4. Older than 60 years .....	21
6. ADVERSE REACTIONS TO NIRSEVIMAB.....	23

## 1. NIRSEVIMAB

Nirsevimab was approved in 2022 to prevent lower respiratory tract infection (LRTI) caused by respiratory syncytial virus (RSV) in newborns and infants during the first wave of RSV. It is a monoclonal antibody to be administered in a single dose and with instantaneous efficacy that does not present any serious adverse reaction, as indicated in the summary of product characteristics.

## 2. IMMUNIZATION COVERAGE

The 2023-24 immunization campaign in Galicia was structured around three immunization groups:

- 1. Risk:** born, with risk factors, between 1 October 2021 and 31 March 2023 (previously included in immunization with palivizumab)
- 2. Catch-up:** born between 1 April and 24 September 2023. They will receive a dose at the beginning of the season.
- 3. At birth:** born from September 25, 2023 to March 31, 2024. They will receive a dose after birth.

Table 1 includes number of immunized children per group.

Group	Nº immunized
Risk group	356
Catch-up	6,237
At birth	6,890
<b>Total</b>	<b>13,483</b>

Table 1. Number of immunized children per group up to 31-03-2024.

### 2.1. Immunization coverage in risk groups

Immunization coverage in risk groups is 100.0%.

## 2.2. Immunization coverage in catch-up group (born between 01-April and 24-September)

Month of birth	Eligible (n)	Cumulative coverage, n (%)		
		Up to 08-10-23	Up to 15-10-23	Up to 22-10-23
April	1,218	849 (69.7)	934 (76.7)	949 (77.9)
May	1,258	838 (66.6)	945 (75.1)	963 (76.6)
June	1,306	884 (67.7)	997 (76.3)	1,019 (78.0)
July	1,351	94 (7.0)	1,035 (76.6)	1,069 (79.1)
August	1,237	40 (3.2)	992 (80.2)	1,026 (82.9)
September	984	119 (12.1)	767 (77.9)	798 (81.1)
<b>Total</b>	<b>7,354</b>	<b>2,824 (38.4)</b>	<b>5,670 (77.1)</b>	<b>5,824 (79.2)</b>

Table 2. Immunization coverage in catch-up (born between 1 April and 24 September 2023) up to 31-03-2024, by month of birth and by week of campaign from 25-09-2023.

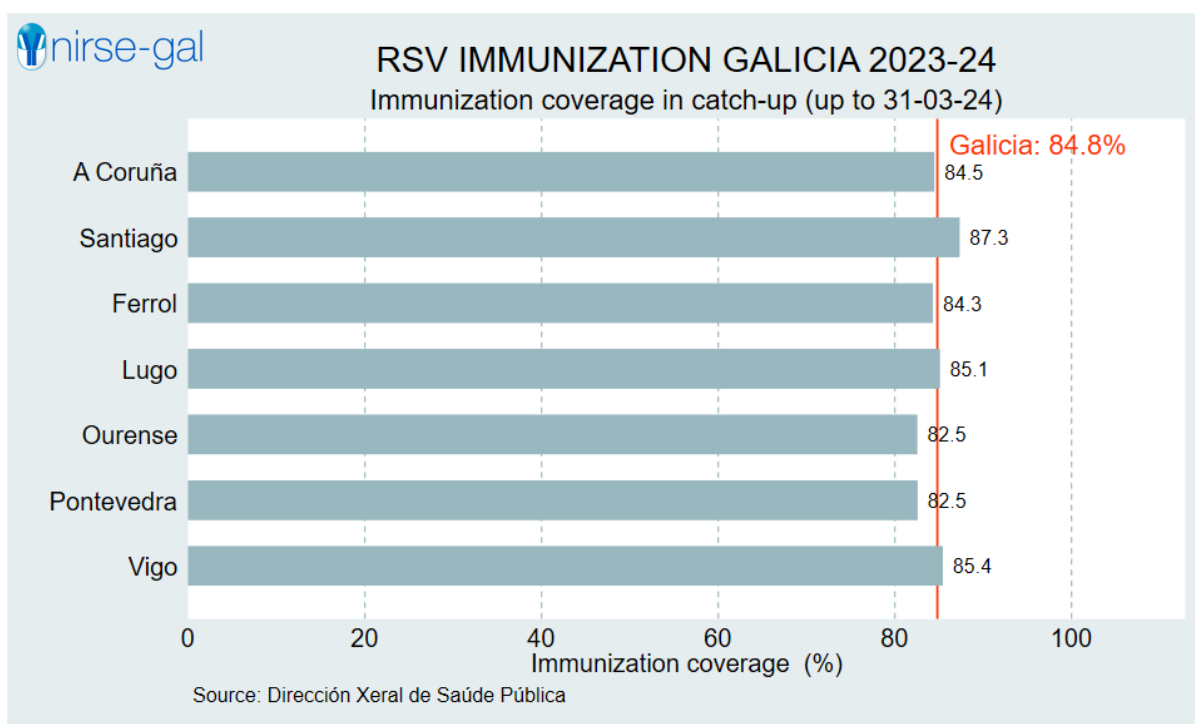


Figure 1. Immunization coverage in catch-up (born between 1 April and 24 September 2023), cumulative up to 31-03-2024, in Galicia by Health Area.

## 2.3. Immunization coverage at birth (born from 25 September 2023)

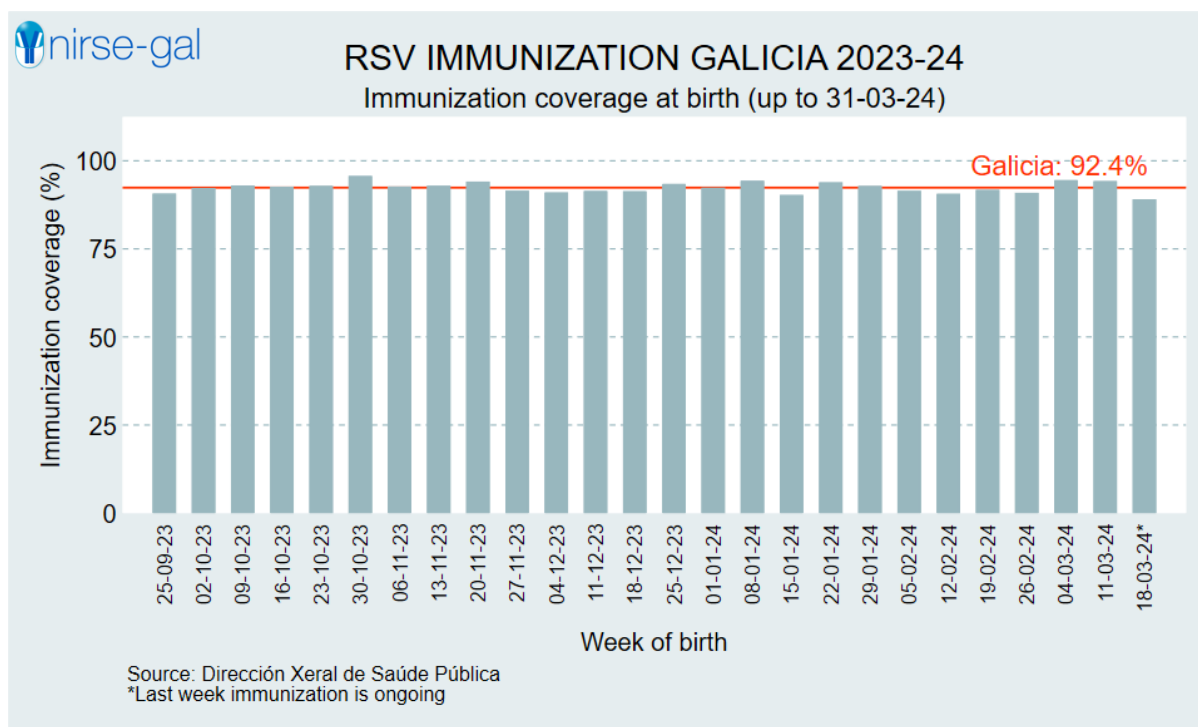


Figure 2. Immunization coverage at birth (born from 25 September 2023), by week of birth. All births up to 24-03-2024 and all immunizations up to 31-03-2024.

Month of birth	No. of births	Cumulative coverage	
		Number	Percentage
September-23	291	263	90.4
October-23	1,370	1,272	92.8
November-23	1,235	1,157	93.7
December-23	1,195	1,094	91.5
January-24	1,180	1,091	92.5
February-24	1,066	982	92.1
March-24	941	864	91.8
<b>Total</b>	<b>7,278</b>	<b>6,723</b>	<b>92.4</b>

Table 3. Immunization coverage at birth (born after 25 de September 2023), by month of birth. All births up to 24-03-2024 and all immunizations up to 31-03-2024.

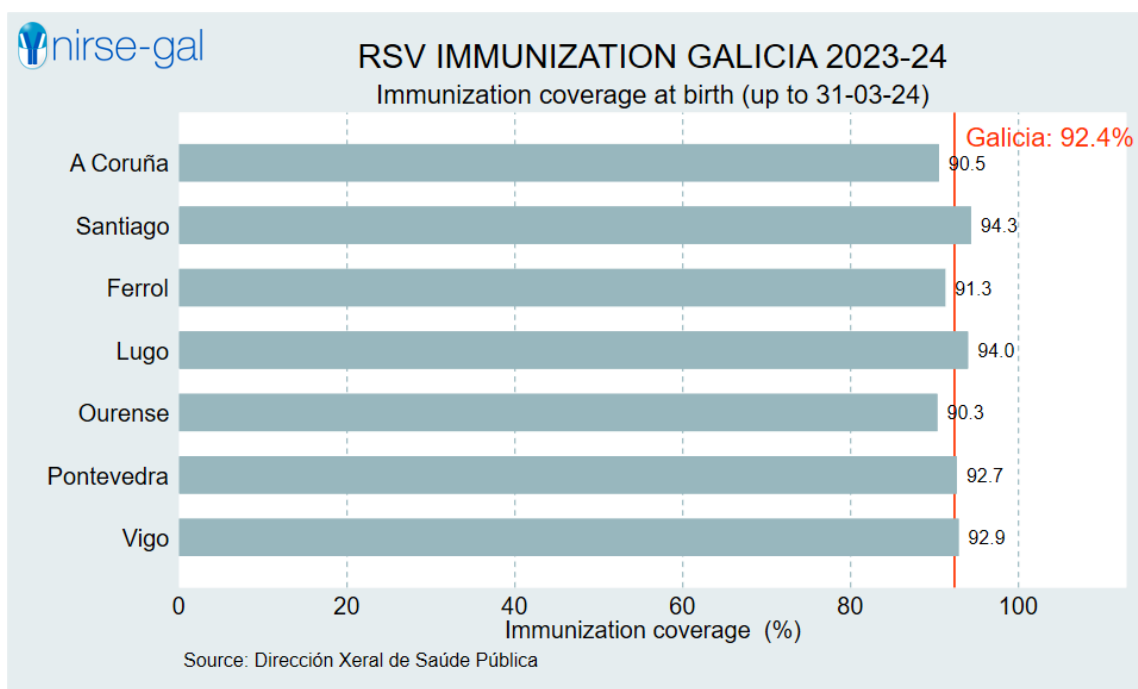


Figure 3. Immunization coverage at birth (births from 25-09-2023), in Galicia by Health Area. All births up to 24-03-2024 and all immunizations up to 31-03-2024.

### 3. Evolution of the RSV epidemic wave

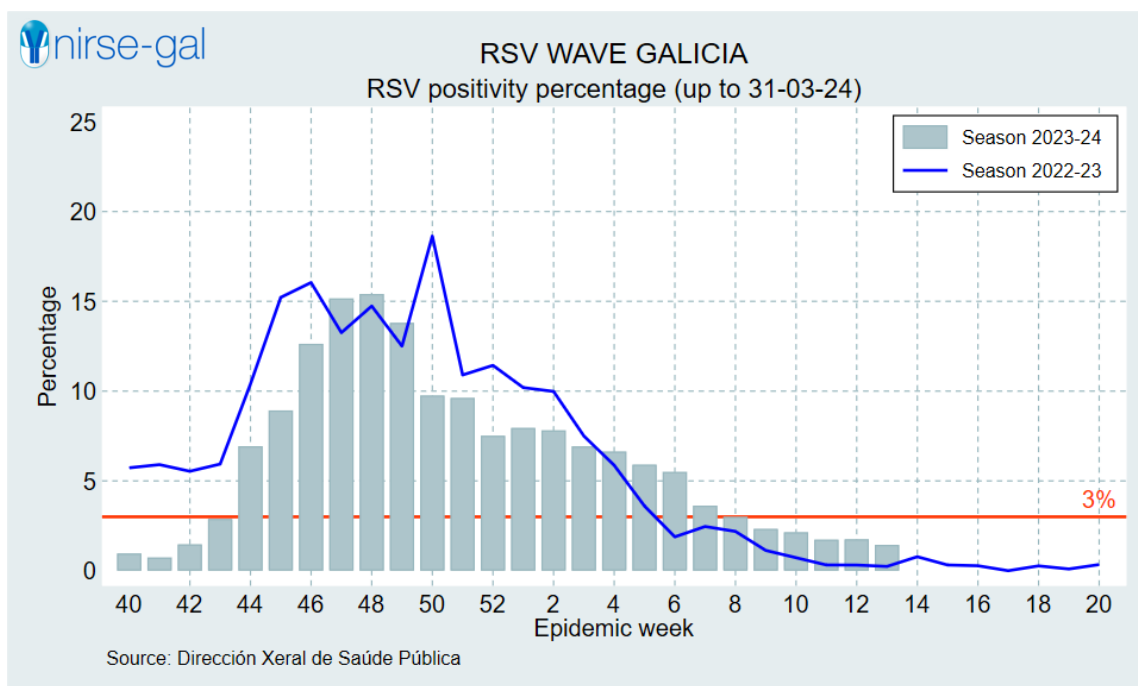


Figure 4. Total population positivity percentage (RSV) in Galicia, in seasons 2022-23 and 2023-24 up to 31-03-2024.

Virus circulation is measured by positivity percentage to all samples sent to the microbiology laboratories of the Galician Health Service. This percentage is estimated by dividing all positive samples between all negative samples. Following the Galician Epidemiology Bulletin vol XXIII number 6 (<https://www.sergas.es/Saude-publica/Documents/7294/BEG%20XXXII-6.pdf>) a percentage of 3% is considered a threshold for the epidemic wave in season 2023-24.

#### 4. RSV hospitalization

The objective of this section is to compare the number and rates of hospitalizations in the current RSV season 2023-2024 with those of previous seasons since 2017, excluding those affected by COVID-19, namely 2020-2021 and 2021-2022 in figures, and also the 2022-23 season in tables.

As the 2023-2024 season is dynamic (new children are born, and those born reach weeks and months of life), three observation groups are used to make this comparison:

- 1. Cohort of births between April and September:** For current season 2023-24, it includes catch-up (children born between April 1 and September 24, 2023); for the comparison with previous seasons, data was collected from children born between April 1 and September 30 of the start of season year.
- 2. Infants under 2 months of age:** For the current season, this group is dynamic and will begin with a high proportion of catch-up children; as weeks go by, the percentage of infants immunized at birth will increase, until reaching 100% on 25 November.
- 3. Infants under 6 months of age:** Also for this group, at the beginning of the wave the majority of infants come from the catch-up group.

#### 4.1. Cohort of infants born between April and September

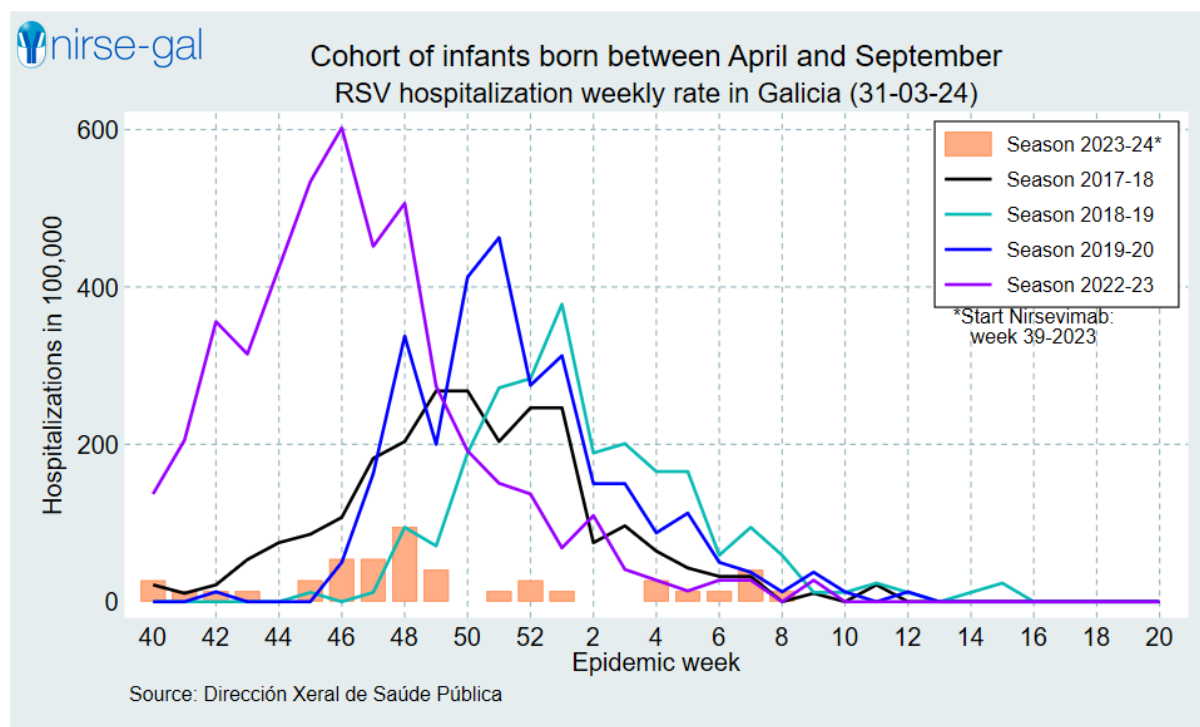


Figure 5. Weekly RSV hospitalization rate in Galicia, by season, up to 31-03-2024. Cohort of infants born between April and September.

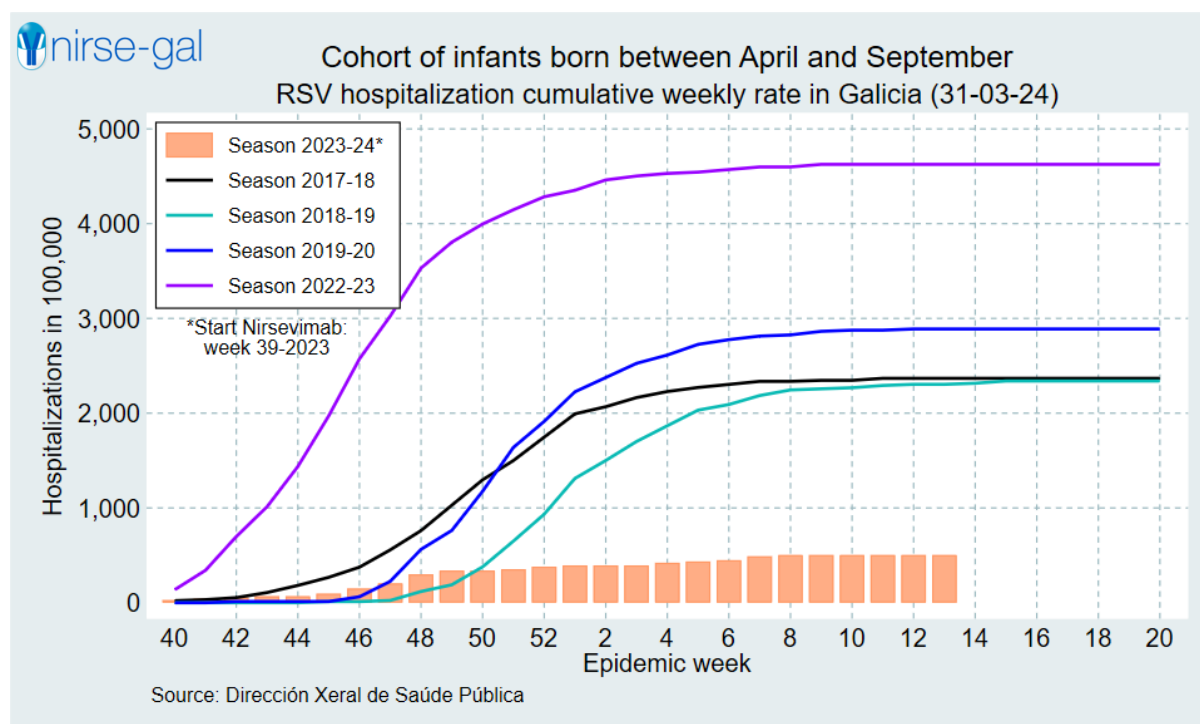


Figure 6. Cumulative weekly RSV hospitalization rate in Galicia, by season, up to 31-03-2024. Cohort of infants born between April and September.



Week	Season 2023-24		Median (range) previous seasons	
	Number	Rate	Number	Rate
40	2	27.2	0 (0 - 2)	0.0 (0.0 - 21.4)
41	1	13.6	0 (0 - 1)	0.0 (0.0 - 10.7)
42	1	13.6	1 (0 - 2)	12.5 (0.0 - 21.4)
43	1	13.6	0 (0 - 5)	0.0 (0.0 - 53.6)
44	0	0.0	0 (0 - 7)	0.0 (0.0 - 75.0)
45	2	27.2	1 (0 - 8)	11.8 (0.0 - 85.7)
46	4	54.4	4 (0 - 10)	50.0 (0.0 - 107.1)
47	4	54.4	13 (1 - 17)	162.6 (11.8 - 182.1)
48	7	95.2	19 (8 - 27)	203.6 (94.5 - 337.6)
49	3	40.8	16 (6 - 25)	200.1 (70.9 - 267.9)
50	0	0.0	25 (16 - 33)	267.9 (189.1 - 412.7)
51	1	13.6	23 (19 - 37)	271.8 (203.6 - 462.7)
52	2	27.2	23 (22 - 24)	275.1 (246.4 - 283.6)
1	1	13.6	25 (23 - 32)	312.6 (246.4 - 378.1)
2	0	0.0	12 (7 - 16)	150.1 (75.0 - 189.1)
3	0	0.0	12 (9 - 17)	150.1 (96.4 - 200.9)
4	2	27.2	7 (6 - 14)	87.5 (64.3 - 165.4)
5	1	13.6	9 (4 - 14)	112.5 (42.9 - 165.4)
6	1	13.6	4 (3 - 5)	50.0 (32.1 - 59.1)
7	3	40.8	3 (3 - 8)	37.5 (32.1 - 94.5)
8	1	13.6	1 (0 - 5)	12.5 (0.0 - 59.1)
9	0	0.0	1 (1 - 3)	11.8 (10.7 - 37.5)
10	0	0.0	1 (0 - 1)	11.8 (0.0 - 12.5)
11	0	0.0	2 (0 - 2)	21.4 (0.0 - 23.6)
12	0	0.0	1 (0 - 1)	11.8 (0.0 - 12.5)
13	0	0.0	0 (0 - 0)	0.0 (0.0 - 0.0)
14	-	-	0 (0 - 1)	0.0 (0.0 - 11.8)
15	-	-	0 (0 - 2)	0.0 (0.0 - 23.6)

Table 4. Weekly RSV hospitalization rate, per 100,000, for season 2023-24 in Galicia, up to 31-03-2024, and median (range) for seasons 2017-18, 2018-19 and 2019-20. Cohort of infants born between April and September.

## 4.2. Infants less than 2 months

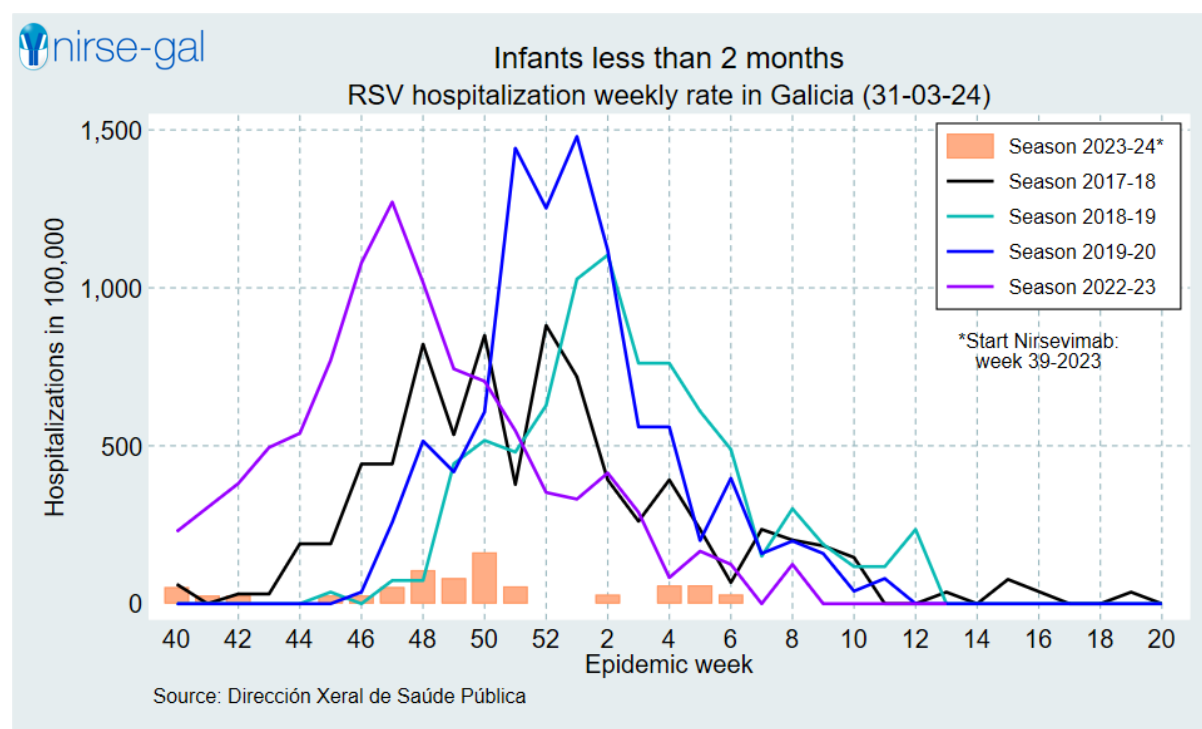


Figure 7. Weekly RSV hospitalization rate in Galicia, by season, up to 31-03-2024. Infants less than 2 months.

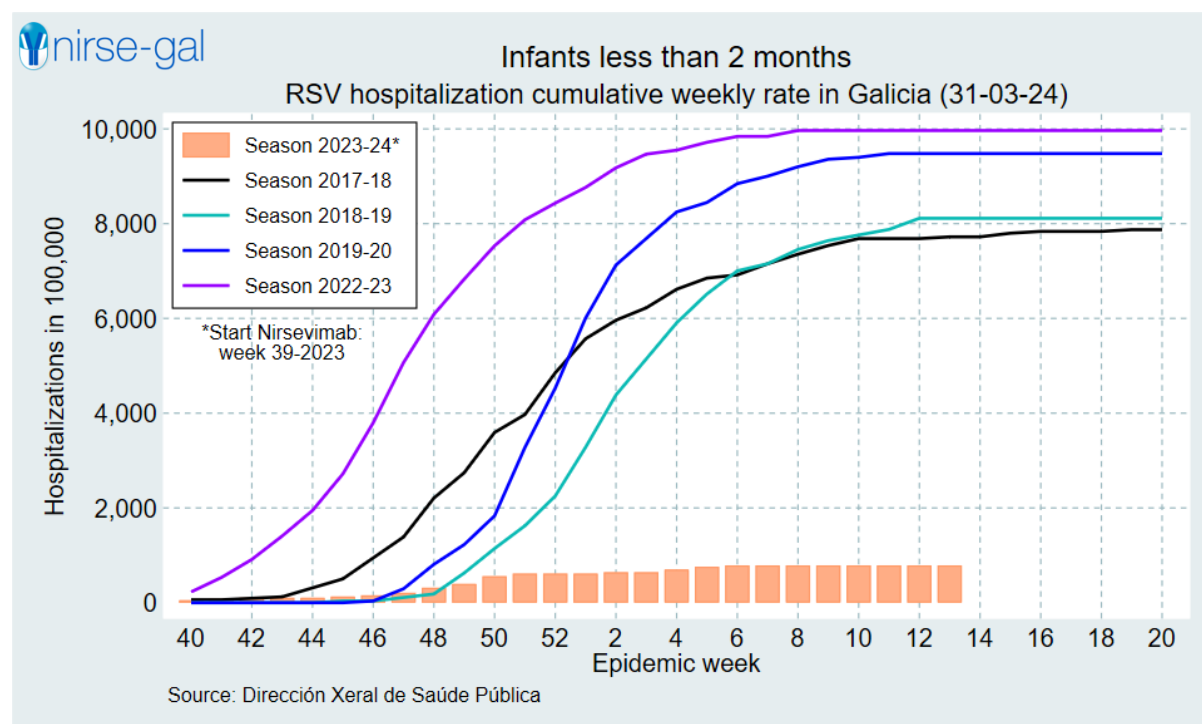


Figure 8. Cumulative weekly RSV hospitalization rate in Galicia, by season, up to 31-03-2024. Infants less than 2 months.

Week	Season 2023-24		Median (range) previous seasons	
	Number	Rate	Number	Rate
40	2	52.4	0 (0 - 2)	0.0 (0.0 - 61.8)
41	1	25.9	0 (0 - 0)	0.0 (0.0 - 0.0)
42	1	26.0	0 (0 - 1)	0.0 (0.0 - 30.9)
43	0	0.0	0 (0 - 1)	0.0 (0.0 - 30.9)
44	0	0.0	0 (0 - 6)	0.0 (0.0 - 189.6)
45	1	26.0	1 (0 - 6)	36.8 (0.0 - 189.6)
46	1	26.0	1 (0 - 14)	36.8 (0.0 - 442.3)
47	2	52.8	7 (2 - 14)	257.4 (73.5 - 442.3)
48	4	106.6	14 (2 - 26)	514.9 (73.5 - 821.5)
49	3	81.1	12 (11 - 17)	443.1 (417.5 - 534.9)
50	6	162.4	16 (14 - 27)	607.2 (517.0 - 849.6)
51	2	55.0	13 (12 - 38)	480.1 (377.6 - 1,442.1)
52	0	0.0	28 (17 - 33)	881.1 (627.8 - 1,252.4)
1	0	0.0	27 (22 - 37)	1,027.8 (718.5 - 1,479.4)
2	1	28.7	28 (12 - 29)	1,103.9 (391.9 - 1,119.6)
3	0	0.0	14 (8 - 20)	559.8 (261.3 - 761.3)
4	2	58.0	14 (12 - 20)	559.8 (391.9 - 761.3)
5	2	58.5	7 (5 - 16)	235.2 (199.9 - 609.1)
6	1	29.0	10 (2 - 13)	397.0 (67.2 - 488.7)
7	0	0.0	4 (4 - 7)	158.8 (150.4 - 235.2)
8	0	0.0	6 (5 - 8)	201.6 (198.5 - 300.8)
9	0	0.0	5 (4 - 5)	183.2 (158.8 - 188.0)
10	0	0.0	3 (1 - 4)	117.5 (39.8 - 146.6)
11	0	0.0	2 (0 - 3)	79.7 (0.0 - 117.5)
12	0	0.0	0 (0 - 6)	0.0 (0.0 - 235.0)
13	0	0.0	0 (0 - 1)	0.0 (0.0 - 36.6)
14	-	-	0 (0 - 0)	0.0 (0.0 - 0.0)
15	-	-	0 (0 - 2)	0.0 (0.0 - 77.0)

Table 5. Weekly RSV hospitalization rate, per 100,000, for season 2023-24 in Galicia, up to 31-03-2024, and median (range) for seasons 2017-18, 2018-19 and 2019-20. Infants less than 2 months.

### 4.3. Infants less than 6 months

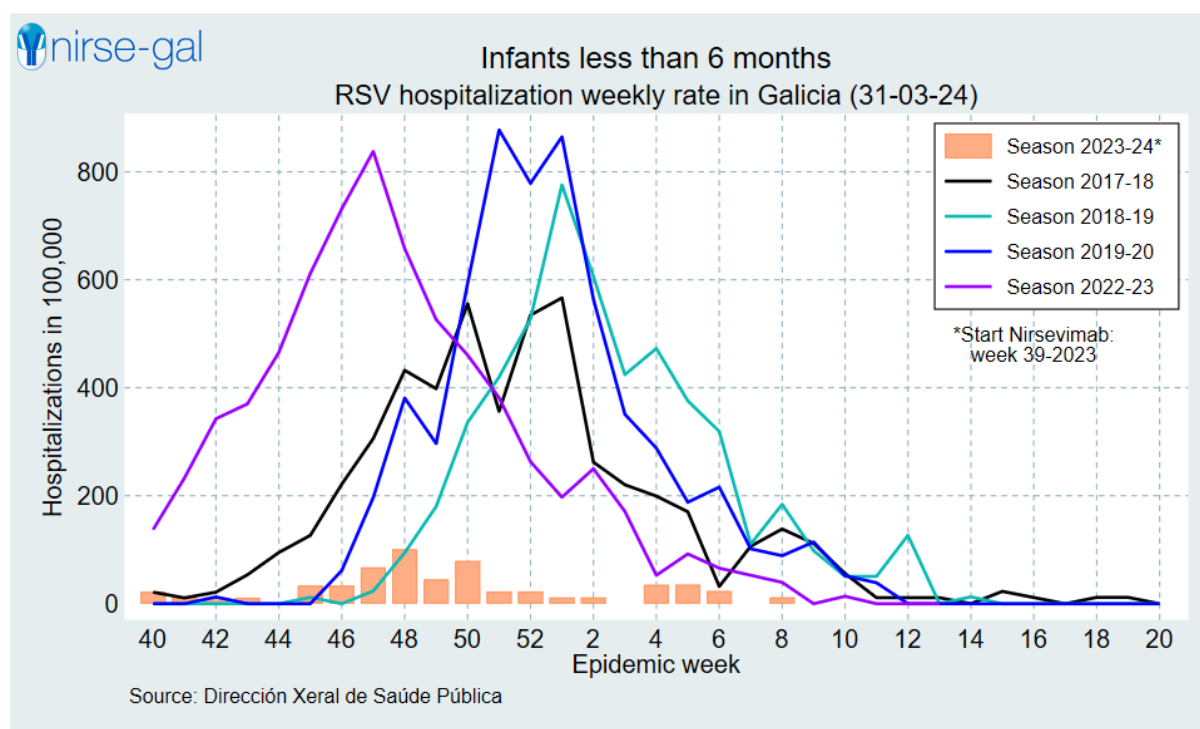


Figure 9. Weekly RSV hospitalization rate in Galicia, by season, up to 31-03-2024. Infants less than 6 months.

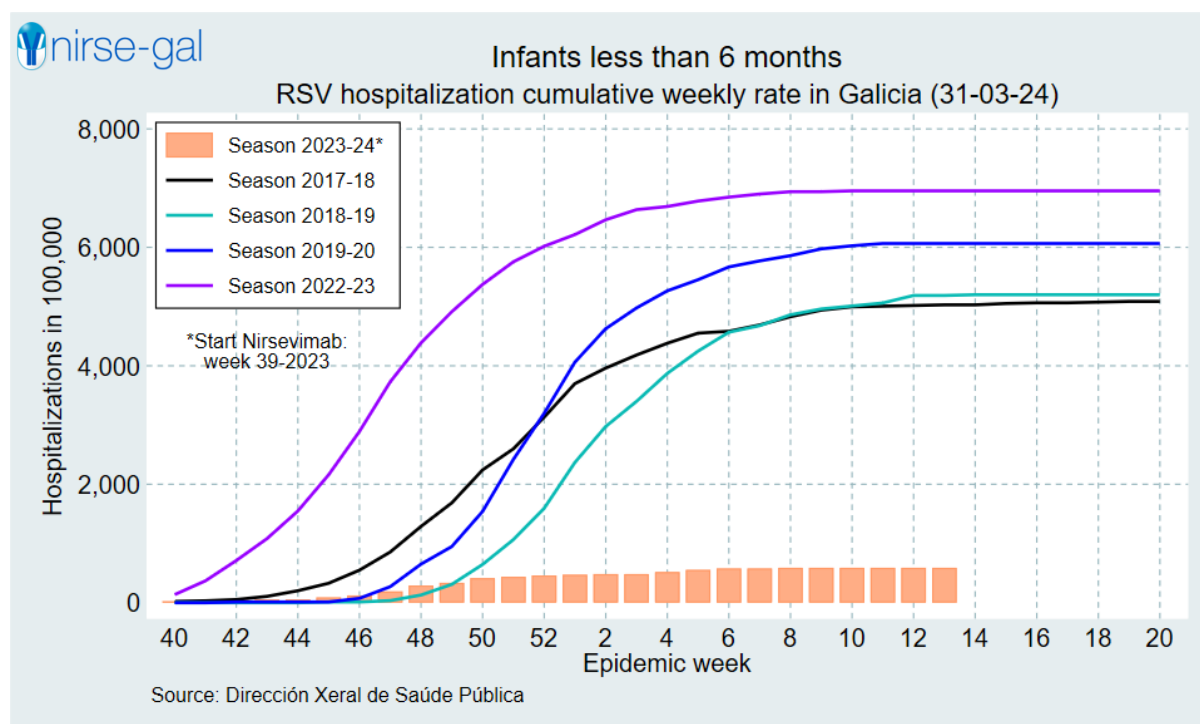


Figure 10. Cumulative weekly RSV hospitalization rate in Galicia, by season, up to 31-03-2024. Infants less than 6 months.

Week	Season 2023-24		Median (range) previous seasons	
	Number	Rate	Number	Rate
40	2	22.3	0 (0 - 2)	0.0 (0.0 - 21.4)
41	1	11.1	0 (0 - 1)	0.0 (0.0 - 10.7)
42	1	11.2	1 (0 - 2)	12.5 (0.0 - 21.4)
43	1	11.2	0 (0 - 5)	0.0 (0.0 - 53.6)
44	0	0.0	0 (0 - 9)	0.0 (0.0 - 94.9)
45	3	33.6	1 (0 - 12)	11.8 (0.0 - 126.5)
46	3	33.6	5 (0 - 21)	61.4 (0.0 - 221.4)
47	6	67.3	16 (2 - 29)	196.6 (23.6 - 305.8)
48	9	100.9	31 (8 - 41)	380.9 (94.4 - 432.3)
49	4	45.0	24 (15 - 38)	296.7 (179.9 - 398.2)
50	7	79.2	48 (28 - 53)	555.4 (335.9 - 593.3)
51	2	22.8	35 (34 - 71)	419.8 (356.3 - 877.6)
52	2	22.8	51 (44 - 63)	534.5 (527.8 - 778.7)
1	1	11.5	64 (54 - 69)	775.9 (566.6 - 864.8)
2	1	11.6	45 (25 - 50)	564.0 (262.3 - 606.1)
3	0	0.0	28 (21 - 35)	350.9 (220.3 - 424.3)
4	3	35.1	23 (19 - 39)	288.3 (199.3 - 472.8)
5	3	35.2	16 (15 - 31)	188.0 (170.4 - 375.8)
6	2	23.5	17 (3 - 26)	216.0 (31.9 - 319.1)
7	0	0.0	9 (8 - 10)	106.5 (101.6 - 110.5)
8	1	11.7	13 (7 - 15)	138.4 (88.9 - 184.1)
9	0	0.0	9 (8 - 10)	111.7 (98.2 - 114.3)
10	0	0.0	4 (4 - 5)	51.7 (50.6 - 55.8)
11	0	0.0	3 (1 - 4)	38.8 (11.2 - 50.6)
12	0	0.0	1 (0 - 10)	11.2 (0.0 - 126.6)
13	0	0.0	0 (0 - 1)	0.0 (0.0 - 11.2)
14	-	-	0 (0 - 1)	0.0 (0.0 - 12.7)
15	-	-	0 (0 - 2)	0.0 (0.0 - 22.9)

Table 6. Weekly RSV hospitalization rate, per 100,000, for season 2023-24 in Galicia, up to 31-03-2024, and median (range) for seasons 2017-18, 2018-19 and 2019-20. Infants less than 6 months.

## 5. RSV HOSPITALIZATIONS IN CHILDREN ENTERING THEIR SECOND RSV SEASON AND ADULTS

The objective of this section is to compare the number and rates of hospitalizations in the current RSV season 2023-2024 with those of previous seasons since 2017, excluding those affected by COVID-19, namely 2020-2021 and 2021-2022 in figures, and also the 2022-23 season in tables.

Data from 2023-24 season includes hospitalizations with RSV positive sample. Data from previous season were obtained from Minimum Basic Data Set (MBDS) hospital registries which includes ICD-10 codes for RSV in any diagnostic position.

Three observation groups are used to make this comparison:

- 1. Cohort of children born between April and March in their 2nd RSV season:** for 2023-24 are children born between 1 April 2022 and 31 March 2023. Same criteria was applied to the previous seasons cohort.
- 2. Infants less than 2 years:** Children between 0 and 23 months at the start of hospitalization.
- 3. Children 1 to 4 years old:** Children between 1 and 4 years at the start of hospitalization.
- 4. Older than 60 years:** older than 60 years at the start of hospitalization.

Children of groups 1 and 3 have NOT been immunized with Nirsevimab in 2023-2024 (except for children included in the risk group).

## 5.1. Cohort of children born between April and March in their 2nd RSV season

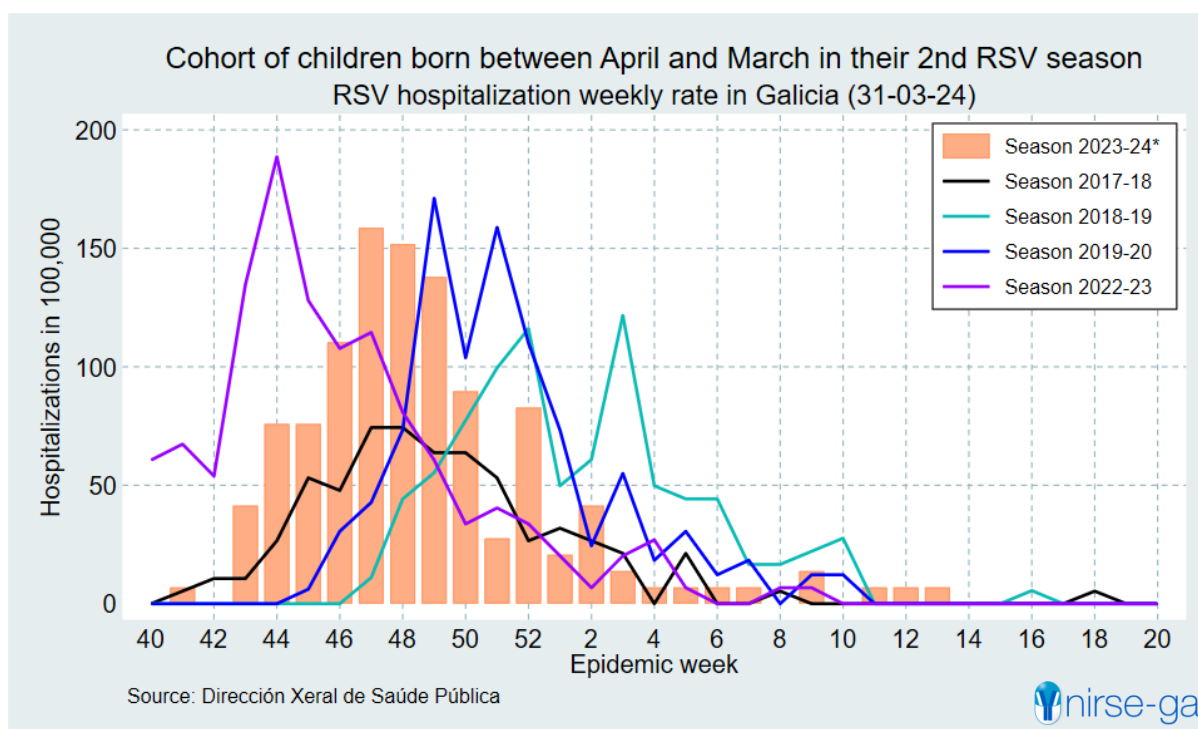


Figure 11. Weekly RSV hospitalization rate in Galicia, by season, up to 31-03-2024. Cohort of children born between April and March in their 2nd RSV season.

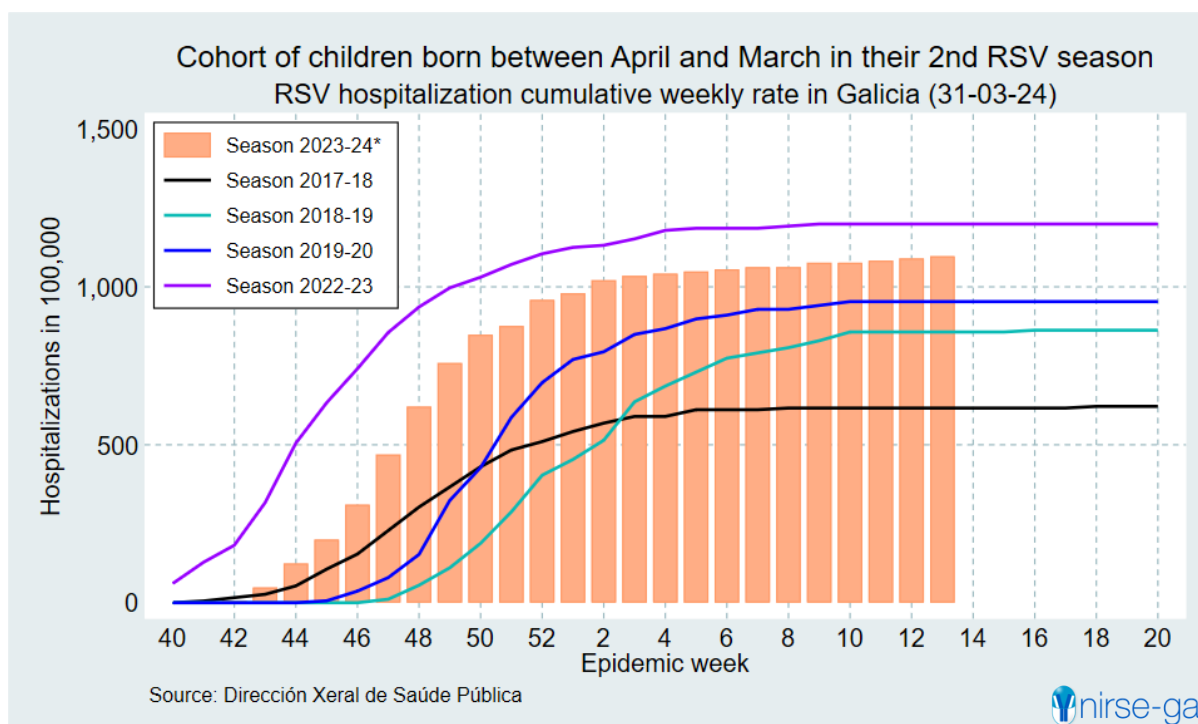


Figure 12. Cumulative weekly RSV hospitalization rate in Galicia, by season, up to, 31-03-2024. Cohort of children born between April and March in their 2nd RSV season.

Week	Season 2023-24		Median (range) previous seasons	
	Number	Rate	Number	Rate
40	0	0.0	0 (0 - 0)	0.0 (0.0 - 0.0)
41	1	6.9	0 (0 - 1)	0.0 (0.0 - 5.3)
42	0	0.0	0 (0 - 2)	0.0 (0.0 - 10.6)
43	6	41.4	0 (0 - 2)	0.0 (0.0 - 10.6)
44	11	75.9	0 (0 - 5)	0.0 (0.0 - 26.6)
45	11	75.9	1 (0 - 10)	6.1 (0.0 - 53.1)
46	16	110.4	5 (0 - 9)	30.6 (0.0 - 47.8)
47	23	158.7	7 (2 - 14)	42.8 (11.1 - 74.4)
48	22	151.8	12 (8 - 14)	73.3 (44.2 - 74.4)
49	20	138.0	12 (10 - 28)	63.7 (55.3 - 171.1)
50	13	89.7	14 (12 - 17)	77.4 (63.7 - 103.9)
51	4	27.6	18 (10 - 26)	99.5 (53.1 - 158.9)
52	12	82.8	18 (5 - 21)	110.0 (26.6 - 116.1)
1	3	20.7	9 (6 - 12)	49.8 (31.9 - 73.3)
2	6	41.4	5 (4 - 11)	26.6 (24.4 - 60.8)
3	2	13.8	9 (4 - 22)	55.0 (21.2 - 121.7)
4	1	6.9	3 (0 - 9)	18.3 (0.0 - 49.8)
5	1	6.9	5 (4 - 8)	30.6 (21.2 - 44.2)
6	1	6.9	2 (0 - 8)	12.2 (0.0 - 44.2)
7	1	6.9	3 (0 - 3)	16.6 (0.0 - 18.3)
8	0	0.0	1 (0 - 3)	5.3 (0.0 - 16.6)
9	2	13.8	2 (0 - 4)	12.2 (0.0 - 22.1)
10	0	0.0	2 (0 - 5)	12.2 (0.0 - 27.6)
11	1	6.9	0 (0 - 0)	0.0 (0.0 - 0.0)
12	1	6.9	0 (0 - 0)	0.0 (0.0 - 0.0)
13	1	6.9	0 (0 - 0)	0.0 (0.0 - 0.0)
14	-	-	0 (0 - 0)	0.0 (0.0 - 0.0)
15	-	-	0 (0 - 0)	0.0 (0.0 - 0.0)

Table 7. Weekly RSV hospitalization rate, per 100,000, for season 2023-24 in Galicia, up to 31-03-2024, and median (range) for seasons 2017-18, 2018-19 and 2019-20. Cohort of children born between April and March in their 2nd RSV season.



## 5.2. Infants less than 2 years

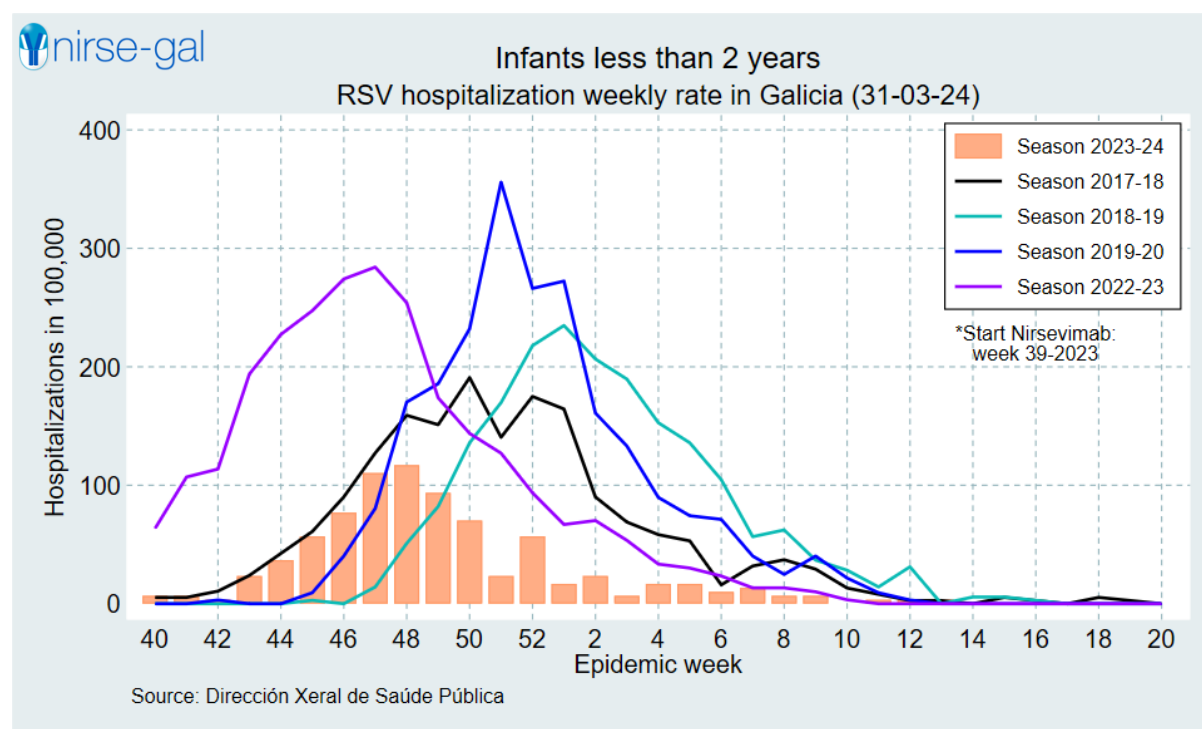


Figure 13. Weekly RSV hospitalization rate in Galicia, by season, up to 31-03-2024. Infants less than 2 years.

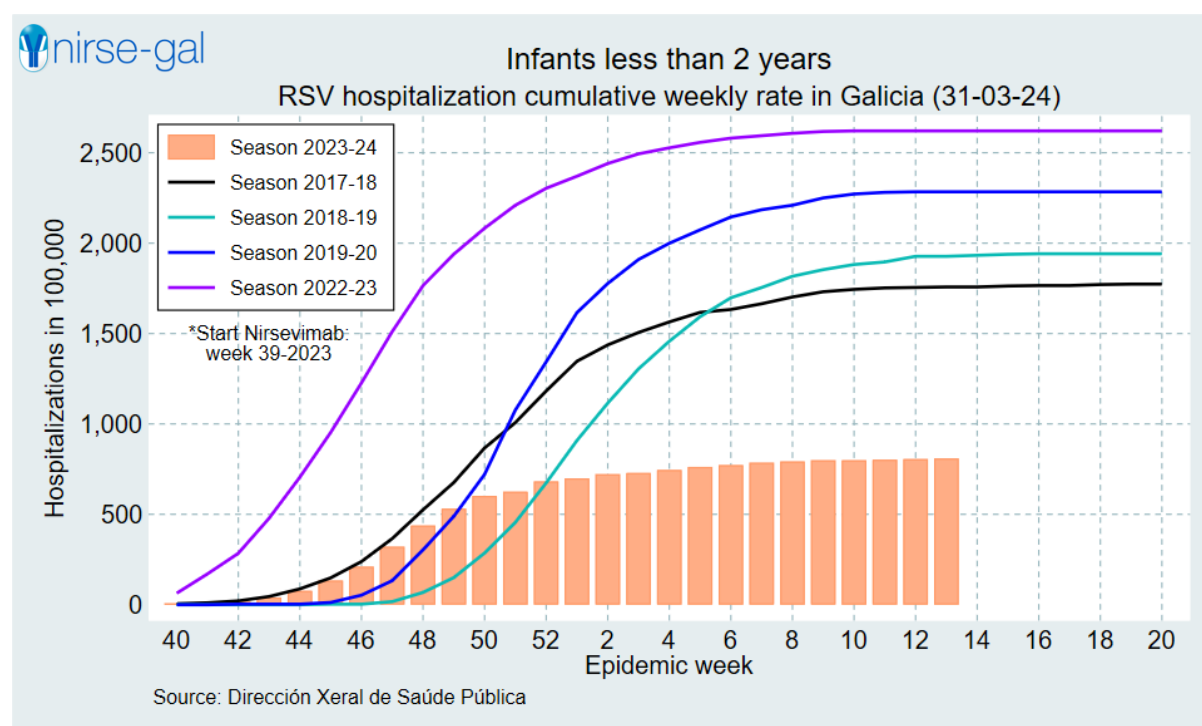


Figure 14. Cumulative weekly RSV hospitalization rate in Galicia, by season, up to, 31-03-2024. Infants less than 2 years.

Week	Season 2023-24		Median (range) previous seasons	
	Number	Rate	Number	Rate
40	2	6.7	0 (0 - 2)	0.0 (0.0 - 5.3)
41	2	6.7	0 (0 - 2)	0.0 (0.0 - 5.3)
42	1	3.3	1 (0 - 4)	3.1 (0.0 - 10.6)
43	7	23.4	0 (0 - 9)	0.0 (0.0 - 23.9)
44	11	36.8	0 (0 - 16)	0.0 (0.0 - 42.4)
45	17	56.8	3 (1 - 23)	9.3 (2.8 - 61.0)
46	23	76.9	13 (0 - 34)	40.2 (0.0 - 90.1)
47	33	110.3	26 (5 - 48)	80.5 (14.1 - 127.3)
48	35	117.0	55 (18 - 60)	159.1 (50.9 - 170.2)
49	28	93.6	57 (29 - 60)	151.1 (82.1 - 185.7)
50	21	70.2	72 (48 - 75)	190.9 (135.8 - 232.1)
51	7	23.4	60 (53 - 115)	169.8 (140.5 - 355.9)
52	17	56.8	77 (66 - 86)	217.9 (175.0 - 266.2)
1	5	16.7	83 (62 - 88)	234.9 (164.4 - 272.4)
2	7	23.4	52 (34 - 73)	160.9 (90.1 - 206.6)
3	2	6.7	43 (26 - 67)	133.1 (68.9 - 189.6)
4	5	16.7	29 (22 - 54)	89.8 (58.3 - 152.8)
5	5	16.7	24 (20 - 48)	74.3 (53.0 - 135.8)
6	3	10.0	23 (6 - 37)	71.2 (15.9 - 104.7)
7	4	13.4	13 (12 - 20)	40.2 (31.8 - 56.6)
8	2	6.7	14 (8 - 22)	37.1 (24.8 - 62.3)
9	2	6.7	13 (11 - 13)	36.8 (29.2 - 40.2)
10	0	0.0	7 (5 - 10)	21.7 (13.3 - 28.3)
11	1	3.3	3 (3 - 5)	9.3 (8.0 - 14.1)
12	1	3.3	1 (1 - 11)	3.1 (2.7 - 31.1)
13	1	3.3	0 (0 - 1)	0.0 (0.0 - 2.7)
14	-	-	0 (0 - 2)	0.0 (0.0 - 5.7)
15	-	-	2 (0 - 2)	5.3 (0.0 - 5.7)

Table 8. Weekly RSV hospitalization rate, per 100,000, for season 2023-24 in Galicia, up to 31-03-2024, and median (range) for seasons 2017-18, 2018-19 and 2019-20. Infants less than 2 years.

### 5.3. Children 1 to 4 years old

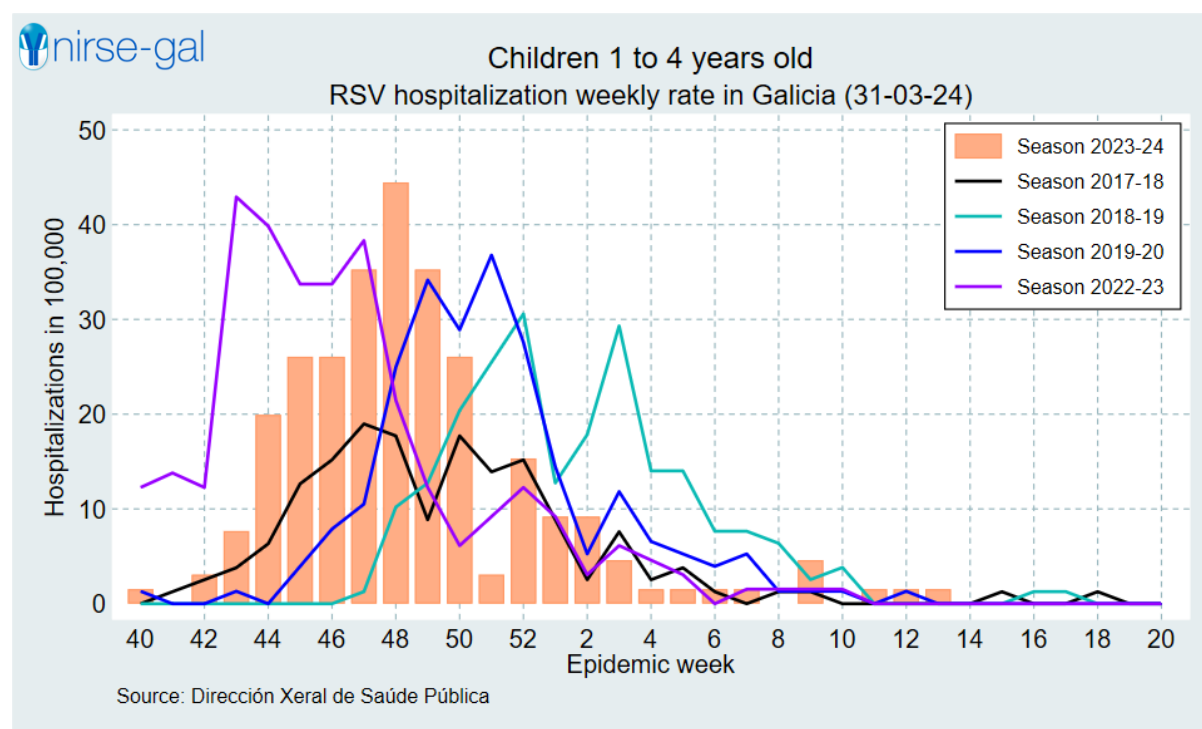


Figure 15. Weekly RSV hospitalization rate in Galicia, by season, up to 31-03-2024. Children 1 to 4 years old.

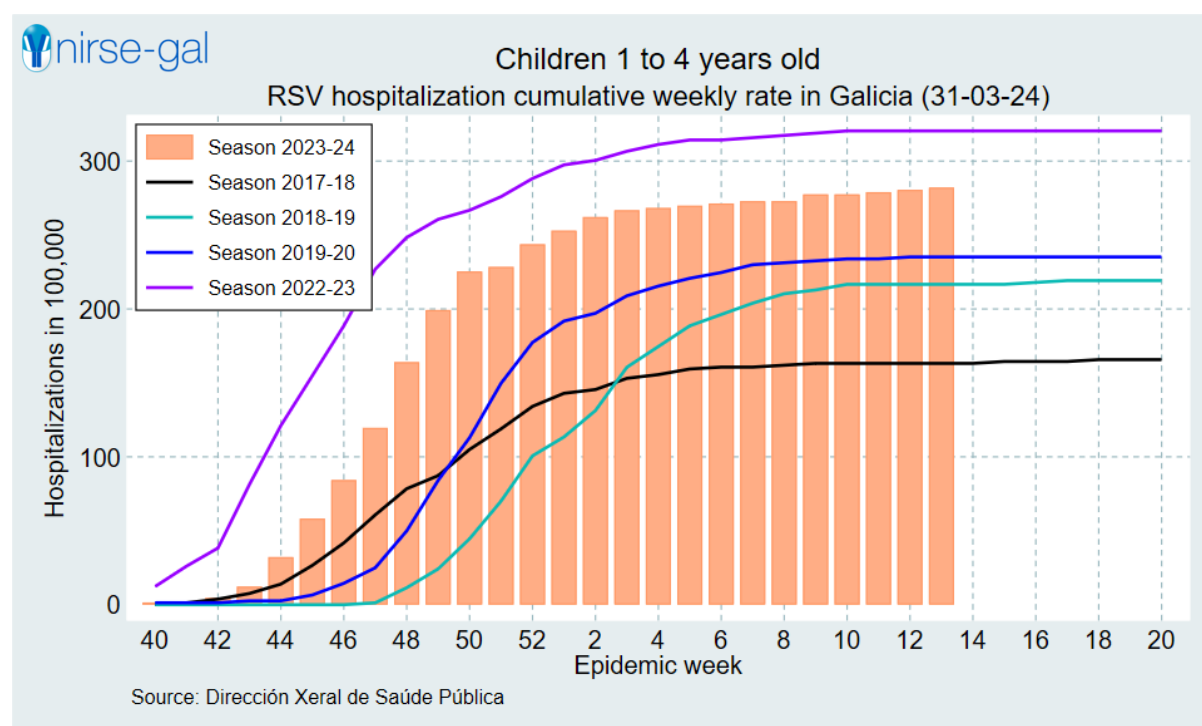


Figure 16. Cumulative weekly RSV hospitalization rate in Galicia, by season, up to, 31-03-2024. Children 1 to 4 years old.

Week	Season 2023-24		Median (range) previous seasons	
	Number	Rate	Number	Rate
40	1	1.5	0 (0 - 1)	0.0 (0.0 - 1.3)
41	0	0.0	0 (0 - 1)	0.0 (0.0 - 1.3)
42	2	3.1	0 (0 - 2)	0.0 (0.0 - 2.5)
43	5	7.7	1 (0 - 3)	1.3 (0.0 - 3.8)
44	13	19.9	0 (0 - 5)	0.0 (0.0 - 6.3)
45	17	26.1	3 (0 - 10)	3.9 (0.0 - 12.7)
46	17	26.1	6 (0 - 12)	7.9 (0.0 - 15.2)
47	23	35.3	8 (1 - 15)	10.5 (1.3 - 19.0)
48	29	44.5	14 (8 - 19)	17.7 (10.2 - 25.0)
49	23	35.3	10 (7 - 26)	12.7 (8.9 - 34.2)
50	17	26.1	16 (14 - 22)	20.4 (17.7 - 28.9)
51	2	3.1	20 (11 - 28)	25.5 (13.9 - 36.8)
52	10	15.3	21 (12 - 24)	27.6 (15.2 - 30.6)
1	6	9.2	10 (7 - 11)	12.7 (8.9 - 14.5)
2	6	9.2	4 (2 - 14)	5.3 (2.5 - 17.8)
3	3	4.6	9 (6 - 23)	11.8 (7.6 - 29.3)
4	1	1.5	5 (2 - 11)	6.6 (2.5 - 14.0)
5	1	1.5	4 (3 - 11)	5.3 (3.8 - 14.0)
6	1	1.5	3 (1 - 6)	3.9 (1.3 - 7.6)
7	1	1.5	4 (0 - 6)	5.3 (0.0 - 7.6)
8	0	0.0	1 (1 - 5)	1.3 (1.3 - 6.4)
9	3	4.6	1 (1 - 2)	1.3 (1.3 - 2.5)
10	0	0.0	1 (0 - 3)	1.3 (0.0 - 3.8)
11	1	1.5	0 (0 - 0)	0.0 (0.0 - 0.0)
12	1	1.5	0 (0 - 1)	0.0 (0.0 - 1.3)
13	1	1.5	0 (0 - 0)	0.0 (0.0 - 0.0)
14	-	-	0 (0 - 0)	0.0 (0.0 - 0.0)
15	-	-	0 (0 - 1)	0.0 (0.0 - 1.3)

Table 9. Weekly RSV hospitalization rate, per 100,000, for season 2023-24 in Galicia, up to 31-03-2024, and median (range) for seasons 2017-18, 2018-19 and 2019-20. Children 1 to 4 years old.

## 5.4. Older than 60 years

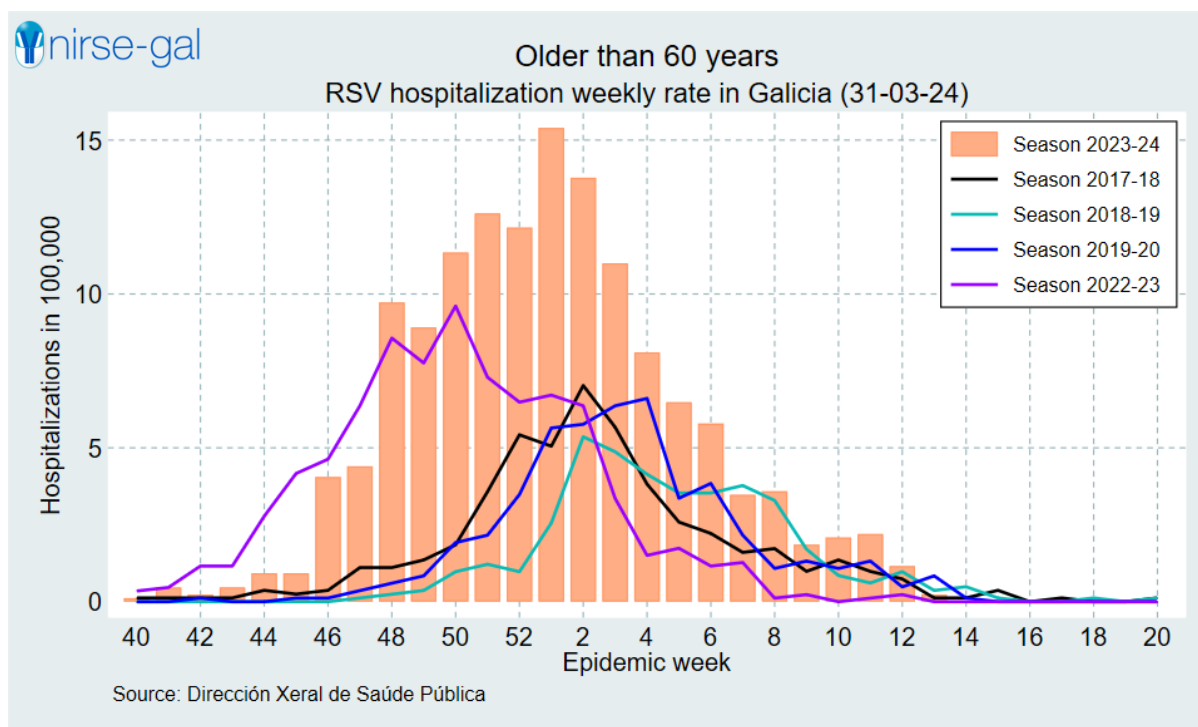


Figure 17. Weekly RSV hospitalization rate in Galicia, by season, up to 31-03-2024. Older than 60 years.

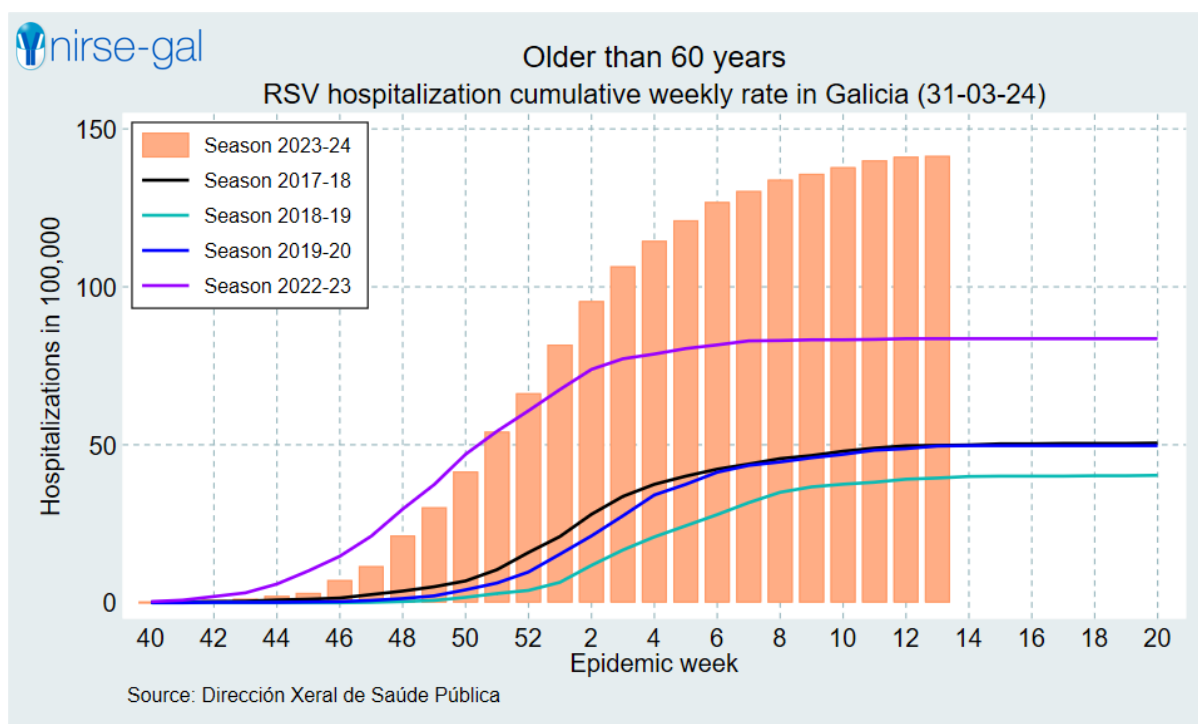


Figure 18. Cumulative weekly RSV hospitalization rate in Galicia, by season, up to, 31-03-2024. Older than 60 years.

Week	Season 2023-24		Median (range) previous seasons	
	Number	Rate	Number	Rate
40	1	0.1	0 (0 - 1)	0.0 (0.0 - 0.1)
41	4	0.5	0 (0 - 1)	0.0 (0.0 - 0.1)
42	2	0.2	1 (0 - 1)	0.1 (0.0 - 0.1)
43	4	0.5	0 (0 - 1)	0.0 (0.0 - 0.1)
44	8	0.9	0 (0 - 3)	0.0 (0.0 - 0.4)
45	8	0.9	1 (0 - 2)	0.1 (0.0 - 0.2)
46	35	4.1	1 (0 - 3)	0.1 (0.0 - 0.4)
47	38	4.4	3 (1 - 9)	0.4 (0.1 - 1.1)
48	84	9.7	5 (2 - 9)	0.6 (0.2 - 1.1)
49	77	8.9	7 (3 - 11)	0.8 (0.4 - 1.4)
50	98	11.3	15 (8 - 16)	1.8 (1.0 - 1.9)
51	109	12.6	18 (10 - 29)	2.2 (1.2 - 3.6)
52	105	12.2	29 (8 - 44)	3.5 (1.0 - 5.4)
1	133	15.4	41 (21 - 47)	5.1 (2.6 - 5.6)
2	119	13.8	48 (44 - 57)	5.8 (5.4 - 7.0)
3	95	11.0	46 (40 - 53)	5.7 (4.9 - 6.4)
4	70	8.1	34 (31 - 55)	4.1 (3.8 - 6.6)
5	56	6.5	28 (21 - 29)	3.4 (2.6 - 3.5)
6	50	5.8	29 (18 - 32)	3.5 (2.2 - 3.8)
7	30	3.5	18 (13 - 31)	2.2 (1.6 - 3.8)
8	31	3.6	14 (9 - 27)	1.7 (1.1 - 3.3)
9	16	1.9	11 (8 - 14)	1.3 (1.0 - 1.7)
10	18	2.1	9 (7 - 11)	1.1 (0.9 - 1.4)
11	19	2.2	8 (5 - 11)	1.0 (0.6 - 1.3)
12	10	1.2	6 (4 - 8)	0.7 (0.5 - 1.0)
13	2	0.2	3 (1 - 7)	0.4 (0.1 - 0.8)
14	-	-	1 (1 - 4)	0.1 (0.1 - 0.5)
15	-	-	1 (0 - 3)	0.1 (0.0 - 0.4)

Table 10. Weekly RSV hospitalization rate, per 100,000, for season 2023-24 in Galicia, up to 31-03-2024, and median (range) for seasons 2017-18, 2018-19 and 2019-20. Older than 60 years.

## 6. ADVERSE REACTIONS TO NIRSEVIMAB

Nirsevimab is a monoclonal antibody administered to a large number of people as part of a population immunization campaign. In terms of pharmacovigilance, it resembles vaccines, as any adverse event temporally associated with its administration must be reported, without suspicion that this product may have caused the event. This is because there could be coincidental medical issues at the same time.

Up until week 6 of this year 2024, 5 suspicions of adverse events have been reported in Galicia through [Notifica RAM](#) (yellow card), 4 reported by healthcare professionals and one by a user. Regarding severity, 3 of them were considered serious, but this information does not allow establishing causality between the occurrence of the event and the medication's administration, as the AEMPS (Spanish Medicine Agency) currently published this information without evaluating causality.

However, to ensure the safety of this product, the Directorate General of Public Health conducted a second review of possible adverse reactions to nirsevimab. All episodes coded by primary care, which could be considered an adverse reaction to the drug in the 4 months following nirsevimab administration, were extracted. All these healthcare attentions were manually reviewed to establish if there was indeed an association with nirsevimab. Table 11 describes these reviews, confirming that currently in Galicia, healthcare professionals did not coded any adverse reactions related to the administration of nirsevimab.

Episode Coding	Immunization Group	Sex		Related to nirsevimab	
		Male	Female	YES	NO
Adverse reaction to vaccination (A87.01)	Catch-up	4	1	0	5
Adverse effect of correct dose medication (A85)	At birth	1	0	0	1
	Catch-up	3	3	0	6
	Risk	1	0	0	1
Medication intoxication/poisoning/overdose (A84)	At birth	0	1	0	1
	Catch-up	2	1	0	3
<b>Total</b>		<b>11</b>	<b>6</b>	<b>0</b>	<b>17</b>

Table 11. Episodes coded in primary care suspicious of possible adverse reactions among individuals immunized with nirsevimab in Galicia classified after the review of medical history, up to week 8 of the year 2024.