

Network as a Service

Globally connected. Secure access. Rest assured.

Case study - Yakult



**Global
Powerful
Flexible
Secure
Simple.**



A healthy, simple and secure network with SASE SD-WAN: prevention is better than cure.



Client
Yakult

Industry
Foodsector

Supplied
CATO SASE SD-WAN and internet lines for the European head office and all sales offices (OPCOs) in Europe. Including 24/7 Managed Detection and Response (MDR) for control over network security.

Results
Better overview and stress-free network.

Within Yakult, all choices are based on the principles of Dr Shirota, Yakult's spiritual and founding father. This means striving to work towards a healthy society, where the basic premise is that prevention is better than cure. And this also applies to the technical choices Yakult makes.

"Yakult Europe selected CATO SASE SD-WAN because this can prevent problems occurring at multiple levels. And, what's more, Yakult's guiding principle is that prevention is better than cure."

We talked to Maaike Vergouw, Information Systems Manager at Yakult Europe B.V. in Almere. We discuss Yakult Europe's decision in favour of CATO SASE SD-WAN, with internet lines, monitoring and the Managed Detection and Response (MDR) service, implemented and managed by IPknowledge, Amsterdam. Project manager Robert Jan van der Horst was responsible for the successful migration project.

Goal 1: Security

IT security is important at many levels. The network layer is perhaps the most complex part, where it's difficult to get and maintain control over matters. The zero-trust security principle is therefore a key starting point. This is designed to prevent gaps appearing unnoticed in the security layer for which there is no known patch. Because we have to assume that, soon or later, hackers will find these

vulnerabilities. *"The 'never trust, always verify' principle appealed to us. After talks with IPknowledge, we realised that a completely new network architecture was the best choice to prepare our organisation for the future. This turned out to be easier than we thought."*

Each time a connection is established, it must be verified. SD-WAN provides a logical divide in the overlay network, but Yakult wanted to go a step further. They wanted to include protection against undesirable network traffic and zero-day vulnerabilities, which requires very advanced network security. Such security must be up to date at all times and it also requires a great deal of processing power. *"We soon realised that you can best do this in a cloud environment, and then purchase it as a service. This means we no longer need operational network*

management: the firewall is in the SASE cloud and is always up to date. We only have a small team and we wanted to improve our IT security, without creating extra work and additional concerns."

Goal 2: Simplicity

There were two main reasons to simplify the international network. First of all, the simpler a network is, the more secure it is. There is a better overview and more control, so if something goes wrong, it is noticed and resolved quickly. A simpler network also means that IT can grow more easily to meet changing business needs and new demands posed by the outside world.



CASE STUDY



Conditions for selecting CATO SASE SD-WAN

What conditions should a total solution for a healthy international network meet? Maaiké gives a clear answer to this question:

"The network is the backbone of your organisation. It must be secure and available at all times, it should be fast and flexible, and be able to adapt to the changing needs of the organisation and the security challenges posed by the world. Besides, more and more applications are migrating to the cloud, which is an important aspect for people working from home. Employees must be able to work quickly, reliably and securely wherever they are, even when on a business trip to Japan."

"Network Service Engineer Marco Kroes had an important role to play in convincing our IT department to take this route. Together with our IT department, he designed the migration project down to the last detail and prepared for a smooth transition to the CATO network."

IPknowledge Partnership

Besides choosing the solution, selecting a reliable partner is an equally important part of the selection process. When making a decision, you look ahead. You want a solution for the coming years, and IPknowledge fits in well with

our IT organisation. Our people got on well together in the preliminary stages, which gave us confidence for the future. A solid foundation for pleasant long-term collaboration was formed by the well-planned implementation and commitment shown by both parties.

"Initially, our IT people were a little sceptical about a cloud network. However, during the preliminary survey, it transpired that all existing requirements, as well as new requests and future requirements could be met for the factory in Almere, the offices throughout Europe, as well as those working from home. Everything connects in a single Yakult CATO Network."

"IPknowledge's technical people were very good at explaining and demonstrating how things work with CATO. Those with initial reservations were quickly won over

when they saw the advantages of SASE SD-WAN: it is easy to manage, gives complete insight into network traffic and is secure. In the classical setup, challenges such as local internet breakouts are really simple to manage within CATO. The various Yakult sales offices in Europe can now have their own language settings and preferences. The user-friendly CATO portal means it is very easy to make adjustments per user group," Maaiké explains.

"IPknowledge has the right people in place to support us, not just during the migration project, but also with the day-to-day network management."



A healthy, simple and secure network with SASE SD-WAN: prevention is better than cure.



Client
Yakult

Industry
Foodsector

Supplied
CATO SASE SD-WAN and internet lines for the European head office and all sales offices (OPCOs) in Europe. Including 24/7 Managed Detection and Response (MDR) for control over network security.

Results
Better overview and stress-free network.

Migration project

"The whole project was completed within 20 weeks, from kick-off to the formal handover. IPknowledge has a very structured project approach. Everything had been thought of in advance, so the migration went very smoothly," explains Robert Jan van der Horst, the project manager responsible for the successful migration project. He arranged brief weekly online updates with the team to discuss progress, any fine-tuning required and the priorities. *"All parties involved worked well together online. It was a well-executed project. With the right people and the right approach, we were able to remotely migrate a complex international network, including our manufacturing location and Azure Cloud. Everybody was very happy with the switch."*

Additional services

Part of the partnership with IPknowledge includes network registration and monitoring. Network and performance data is collected centrally through the IPknowledge Collector; this is the only equipment installed in the internal network. This collector sends summary data and updates to the IPknowledge cloud. The dashboards provide an end-to-end overview. If there's a problem, IPknowledge can quickly identify the cause and take appropriate remedial action.

Yakult Europe B.V. also receives a monthly report with suggestions for improvement. This means that potential problems can be dealt with swiftly and transparently and even before any users have noticed. In addition, Yakult uses the CATO Managed Detection and Response Service.

"What I really appreciate in our collaboration with CATO is their proactive approach. It turns out that everything what we wanted is actually feasible. No unnecessary bureaucracy, and we get the help we need when we need it."

This is an additional layer which can even detect and deal with zero-day attacks or detect unusual activity in the network and take immediate action 24/7, in accordance with the contractual agreements.

Yakult Europe B.V. now uses CATO Networks SASE SD-WAN, which has made the firewalls and VPN concentrators redundant. Older MPLS connections in the Netherlands, Germany, Italy and England have now been replaced with high-speed internet lines, supplied by IPknowledge. All Yakult locations are connected to the internet with double, redundant lines.

Results

A stress-free network environment with a calming influence is how Maaïke experiences the new situation. She sums this up in the following ten results:

1. Secure and stable network performance.
2. Complete overview of traffic on the Yakult European network.
3. Simplified infrastructure and contract management for the internet lines – IPknowledge is a 'one-stop shop'



CASE STUDY



4. Easy to use for employees because they can always log in securely via CATO Networks and have a fast connection, even when working from home.
5. No more unexpected management costs for firewalls, security patches or VPNs. Everything we need is included in the monthly service fee.
6. Full flexibility. The set-up and country-specific preferences are much easier to configure than in the previous MPLS system. We can easily make adjustments via the CATO portal.
7. The Yakult European Network has preventative and proactive security. For example, zero-day attacks are blocked because the AI technology used can detect unusual network behaviour.
8. CATO Networks MDR (Managed Detection and Response), which has similar functionality to a 24/7 SOC (Security Operations Center).
9. Colleagues travelling to Asia can still use all the European applications at the normal speeds, thanks to the CATO backbone. "You can get on the CATO highway from anywhere in the world."
10. Our IT people now have much more time to deal with the needs of the business and so can play a more significant role for the Yakult Europe organisation.

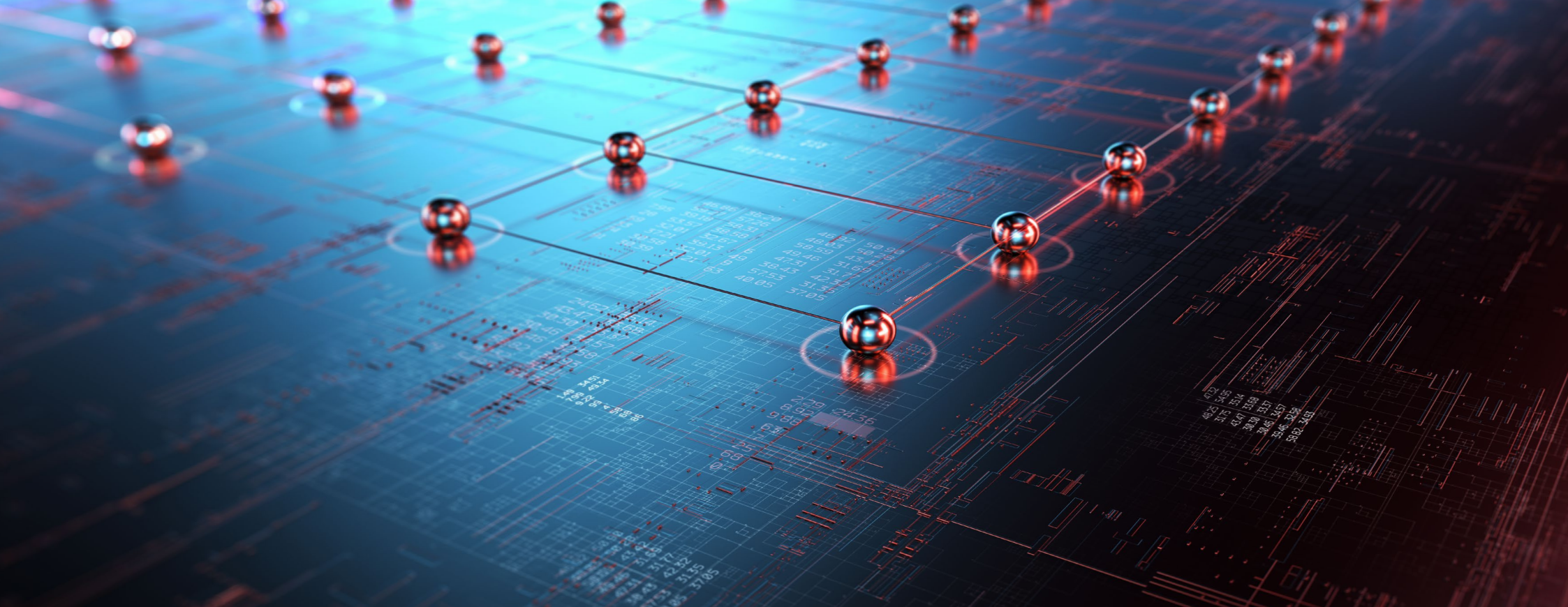
About Yakult Europe B.V.

Yakult Honsha was founded in 1955 and is now a global company best known for its little bottles of Yakult. Yakult Europe first made Yakult in 1994 and continues to be the main production location for Yakult products in Europe. Science lies at the heart of Yakult. Dr Shirota was a pioneer in the field of microbiology and in 1955 he founded the Yakult

Central Institute, which continues to undertake cutting-edge research. Together with Yakult Honsha European Research, work is on-going to enhance our knowledge of gut health and the idea that a healthy gut leads to a long life.

Read all about it on
www.yakulteurope.com

IPknowledge connects people in organisations, around the world and with every application. We provide cloud-native connectivity, security and monitoring services which are powerful, flexible and simple. Our Network-as-a-Service approach means that our clients benefit from secure digital performance around the world, and they no longer have to maintain and support network equipment themselves.



IPknowledge B.V.

H.J.E. Wenckebachweg 123
1096 AM Amsterdam
The Netherlands

T +31 88 08 82 600

F +31 84 74 76 049

administratie@ipknowledge.net

IPknowledge.net