

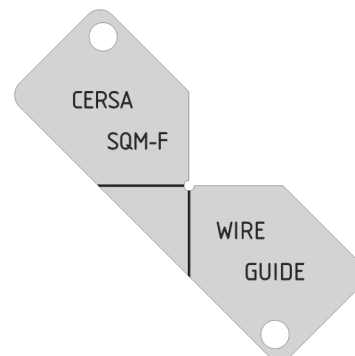
WIRE GUIDING TOOL (for SQM-F device)

SPECIFICATIONS

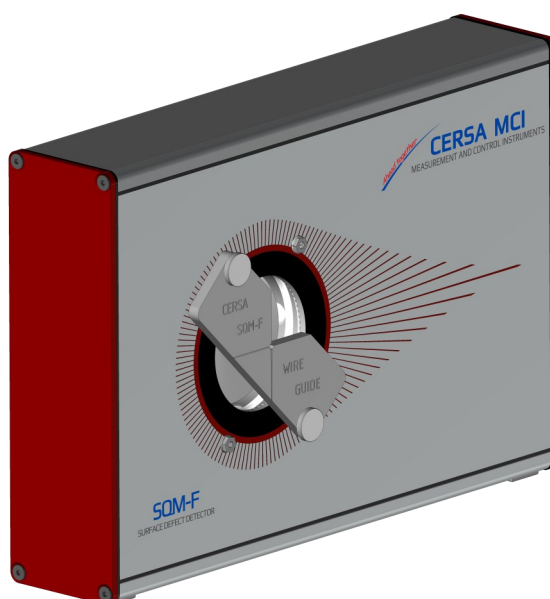
Specially designed for SQM-F device. It helps the fine wire/cable/tube to be perfectly centered into the hole of the SQM-F.

This accessory is provided by default with each SQM-F device.
2 pieces : one on each side of the SQM-F

Nota : must be removed before starting up the production!



PRODUCT	GUIDING TOOL
General data	
External dimensions	L = 112 mm ; l = 38 mm
Weight	Around 60 g



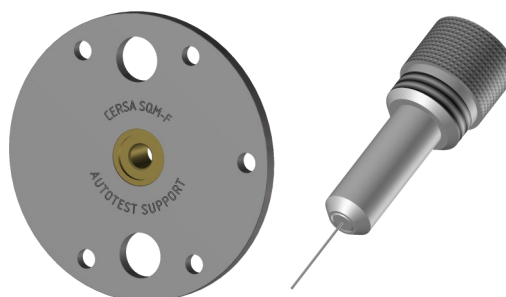
AUTOTEST TOOL (for SQM-F device)

SPECIFICATIONS

Specially designed for SQM-F device. Allows to periodically perform a self-test of the correct operation of the SQM-F.

This accessory is provided by default with each SQM-F device.
2 pieces: 1 disk and 1 high-quality surface rod.

Nota : fragile tool; handle with care!



PRODUCT	AUTOTEST TOOL
General data	
External dimensions	Ø 120 mm
Weight	Around 260 g

