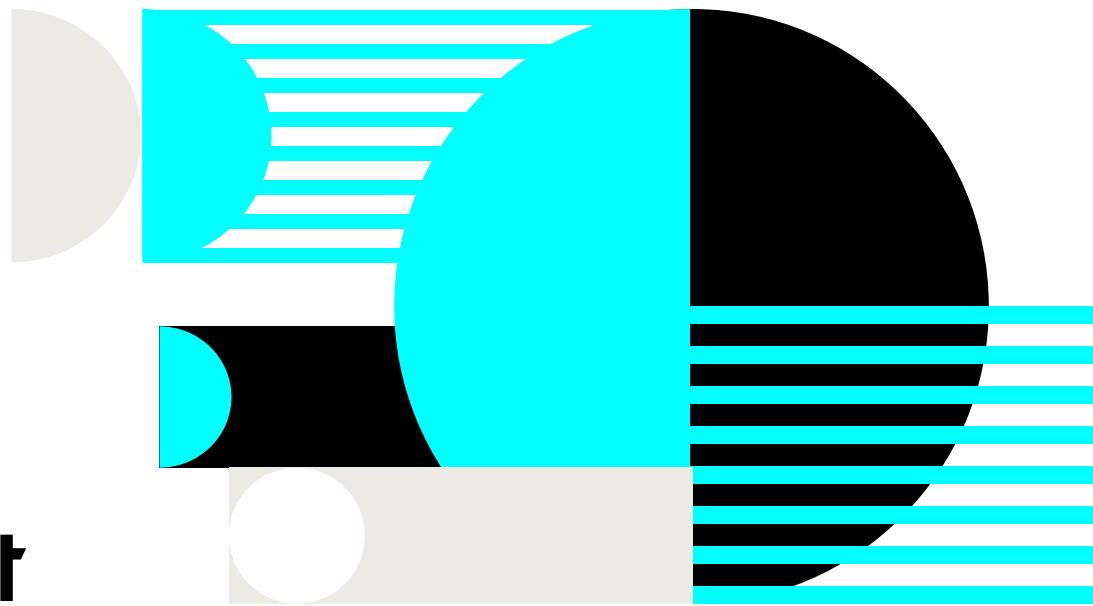


# Upgrade your HEOR and Demonstrate Value by Leveraging Linked Data

---

December 2023

**datavant**

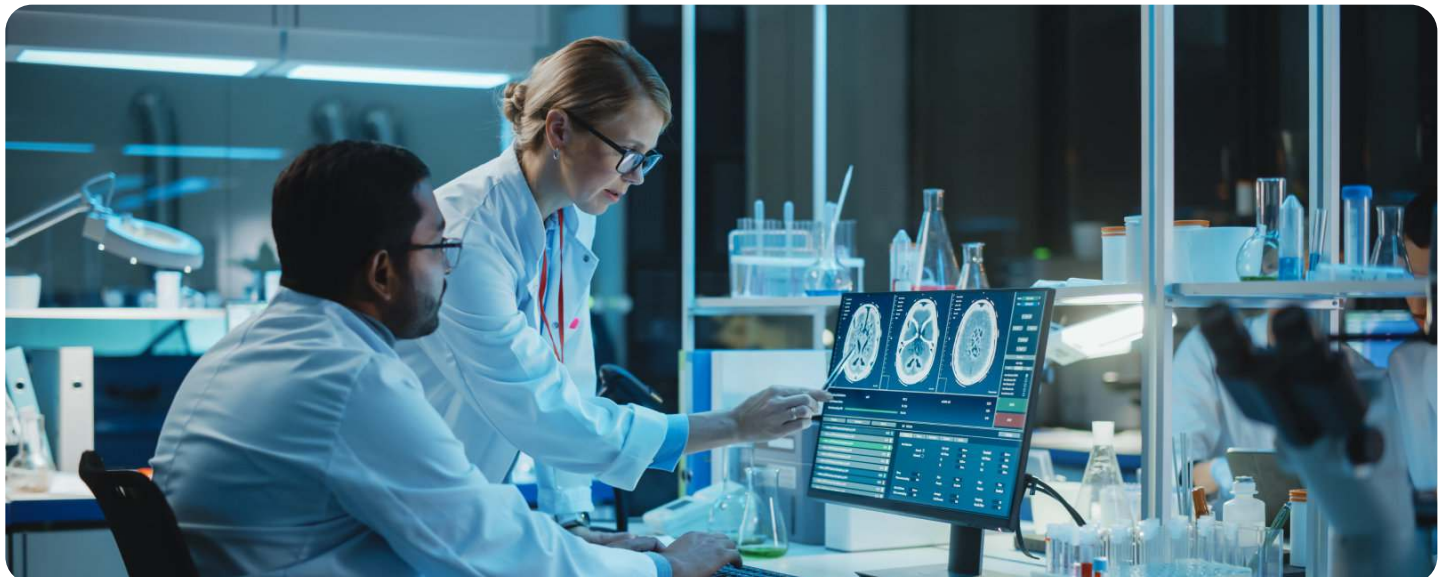
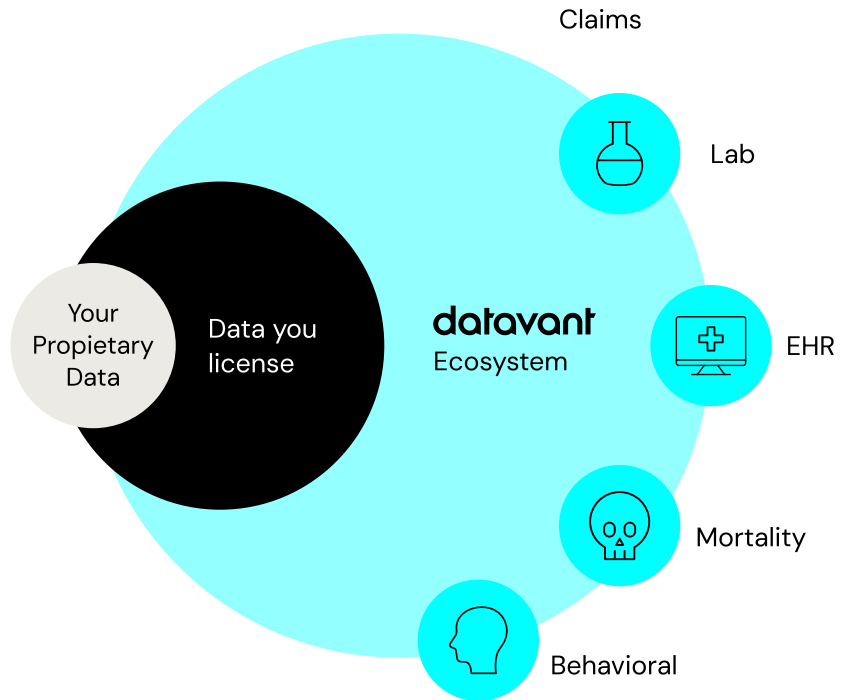


As the healthcare industry moves towards a value-based care model, life sciences companies need to utilize real-world evidence to justify the cost and improve understanding of the effectiveness of their therapeutics and medical devices. Take your health economics outcomes research (HEOR) to the next level by linking your siloed real-world datasets.

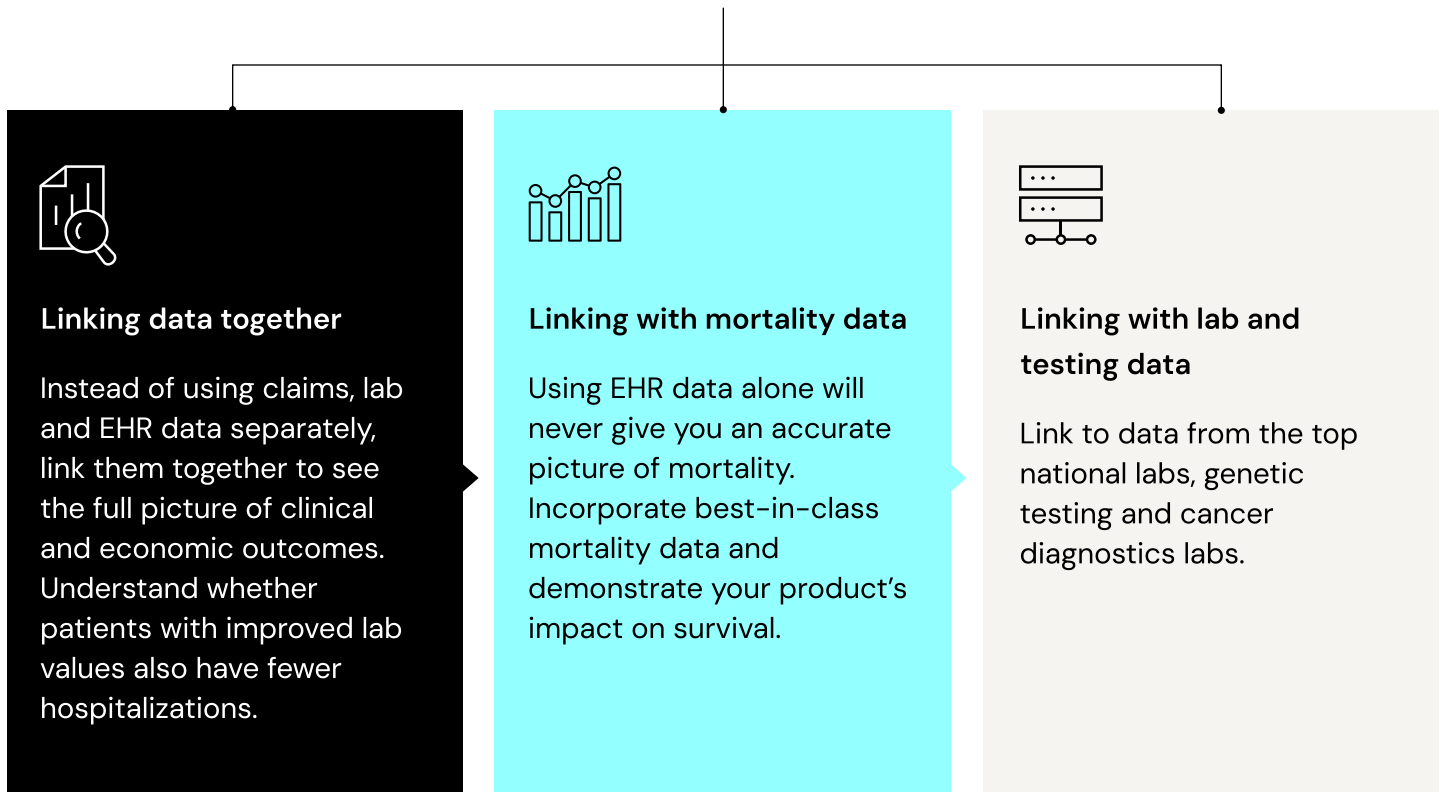
### Move beyond data siloes

By linking real-world data to your proprietary data you can create a longitudinal view of the patient journey. This will allow you to conduct more effective HEOR and better understand the efficacy and value of your products.

**Datavant's ecosystem** of more than 350 organizations includes leading claims, lab, EHR, and mortality data sources that already use our technology to link data.



# datavant



## Case Study 01

### Creating a longitudinal patient journey

A leading medical device company launched a subcutaneous Bluetooth-enabled glucose monitoring device that measures biometrics to allow patients to better manage their medication and diabetes. The product also enables patients to readily share information with physicians through a cloud-based platform. Using Datavant's technology, the company linked together claims, lab, and their internal patient data to understand how the device enabled patients to improve their diabetes management and overall quality of life.



## Case Study 02

### Demonstrate value after a ccelerated approval

A leading pharma received accelerated approval for their immunotherapy, based on a surrogate endpoint. How do they gather evidence of clinical and economic outcomes as early as possible? With Datavant they can link the lab data from their clinical trial to real-world data and understand whether the patients with a higher white blood cell count also experienced improved symptoms or better overall survival.