



“One Person’s Trash...”

Your guide to reducing, reusing and recycling

**A Newsletter of
El Dorado Disposal Service**

(530) 626-4141

eldoradodisposal.com

Winter 2023

Organics Recycling Updates

Senate Bill (SB) 1383, California’s Short-Lived Climate Pollutant Reduction Strategy, was signed into law in 2016 and went into effect in 2022. The law targets greenhouse gases for reduction, in particular methane, which is a super pollutant that can be 84 times more potent than carbon dioxide. Methane results from several activities, including landfilling organic waste. Because of this, SB 1383 establishes two 2025 goals related to organics — reduce organic waste disposal in landfills by 75% and rescue at least 20% of surplus food currently disposed by businesses. Programs for residents and businesses will vary, but all customers will eventually see changes.

Residents

Beginning January 1, 2023, we will offer the food and yard waste program to our residential customers in the unincorporated county area. The customers in area A, which includes Pollock Pines, Camino, Diamond Springs, Shingle Springs, El Dorado, some areas of Rescue, some areas of Placerville, and non-mandatory areas of El Dorado Hills, have existing yard waste collection services. For these customers, the yard waste collection will become a “Yard and Food Waste Collection” beginning in January 2023. Customers in unincorporated areas B and C, which don’t have yard waste collection service, will be able to self-haul food scraps and food-soiled paper to the Material Recovery Facility beginning in January 2023.

Businesses

Many businesses, especially restaurants and grocery stores, were already recycling food scraps under Assembly Bill 1826, an earlier California commercial organics recycling law. With the passage of SB 1383, we have expanded the program to all commercial customers. As of last July, all businesses with food waste service were able to include additional materials, including inedible items, such as eggshells and coffee grounds with filters, and food-soiled paper, such as napkins, paper plates, and waxed paper products. Also, we began allowing businesses to place food scraps into Biodegradable Products Institute (BPI) GREEN-colored bags. These bags make collection easier at food businesses and help keep carts and bins cleaner. These green bags also make it easy for our drivers to see that they are picking up biodegradable, BPI-approved bags that will decompose at the same rate as the food scraps, rather than regular plastic bags that create contamination. Our goal is that allowing these bags will increase participation and provide us with cleaner material to compost.



Credit: Adkasal | iStock | Getty Images Plus

Need help navigating the changes?

El Dorado Disposal Service has a dedicated and resourceful Sustainability Team that can answer questions and provide hands-on training for employees and managers at local businesses. When we visit you and see how you work, we are able to answer specific questions about your business operations and waste-handling processes. We also have flyers featuring pictures of various materials that can help busy employees make quick sorting decisions. Whether you need assistance implementing the new food scrap and food-soiled paper collections, have questions about proper recycling for other materials, or want to reduce contamination in your containers, our team can help. Call us at 530-626-4141 or email us at 4030sustainability@wasteconnections.com.



Recycle paper in the correct cart

As we have begun to roll out food scrap and food-soiled paper recycling across El Dorado County, we’ve noticed a worrisome trend. Some folks are putting clean, recyclable paper, such as magazines, printer paper, and cardboard, into the Yard and Food Waste cart or bin. Please don’t do that.

Clean, recyclable paper belongs the same place it always has — in the recycling cart or bin! Clean, recyclable paper includes newspapers, magazines, catalogs, office and school papers, junk mail, empty cereal boxes, shoe and gift boxes, paperback books, and cardboard boxes. The highest and best use for this paper is to be turned into new paper and cardboard products, which can be recycled again. When this paper gets mixed with food and yard waste, its life as a paper product is done.

The only paper that should be mixed with food scraps and yard waste is “food-soiled,” which includes paper towels, paper napkins, paper plates, coffee filters, greasy pizza boxes, and waxed cartons from milk, juice, ice cream, and similar items. In other words, the only paper products that should be mixed with food and yard waste either held food directly or cleaned up after it.

If food collection in your area has not started and you have a yard waste cart offered in your area, food waste collection begins in January 2023. Please keep an eye out for our new service information in the mail. If you are in an area without a yard waste cart, please continue to place food-soiled paper products and waxed paper products in the garbage.

If you have questions, visit eldoradodisposal.com or call one of our recycling experts at 530-626-4141.



Credit: Laboko | iStock | Getty Images Plus



Credit: vm | iStock | Getty Images Plus

Reducing food waste

Certain large, food-related businesses are now required to donate surplus edible food that would have otherwise been destined for landfill disposal. If you operate a food business or run a nonprofit which could distribute food, learn more at edcgov.us/Government/emd/solidwaste/food-recovery. You can also visit toogoodtogo.com, a website that helps connect businesses with surplus food to consumers who can rescue it.

If you would like to manage more of your organic waste in your own backyard and create healthier soil in your gardens, you can use vegetable and fruit scraps along with yard waste in a compost bin or pile. You can learn more by searching for “Home Composting” at edcgov.us. El Dorado Disposal also offers composting classes periodically, so watch our website and social media pages for announcements. Visit eldoradodisposal.com for more information about organics and all our other programs.

For those who have food scraps, but don’t have the room, time, or interest in composting, check out sharewaste.com. This site connects those with food scraps to people who would like to use them in their own compost pile, a community garden, or for livestock feed.

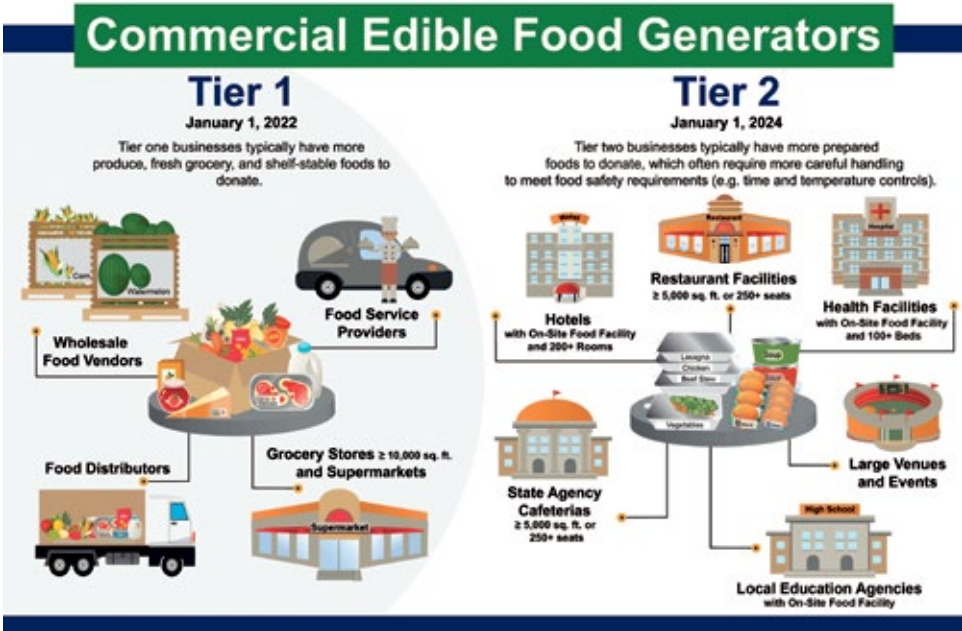
Welcome, Madyson!



We’re delighted to welcome new Operations Supervisor Madyson Lawlor to our team. Madyson has been with Waste Connections for more than seven years in Oregon and brings with her a wealth of knowledge from the waste industry.

Food Recovery Requirements

To reduce food waste and help address food insecurity, SB 1383 sets a goal of 20% recovery of surplus edible food from California businesses by 2025. The law directs that food-generating businesses must arrange to recover the maximum amount of their edible food that would otherwise go to landfills and to maintain records of their food donation activities. SB 1383 places mandated food donors into two tiers. This tier system allows businesses and jurisdictions more time to prepare to expand or build new food recovery infrastructure and capacity to donate foods that are harder to safely store and distribute. At present, Tier 1 businesses need to be in compliance. Learn more at EDCgov.us/Government/emd/solidwaste/food-recovery.



Reduce contamination in the recycling stream

El Dorado County residents are great at recycling, but we still see some contaminants in recycling carts. Did you know contamination can ruin an entire truckload of recyclables? When items that don’t belong in recycling bins end up inside collection trucks, they can ruin otherwise recyclable items and damage equipment at the Material Recovery Facility. Whether collecting recycling at a business or from your own home, do your part to reduce contamination and keep recycling clean.

Common contaminants include plastic bags, Styrofoam, textiles (such as clothes and towels), and wood. Make sure these items go into your trash and not your recycling or yard waste carts. If you aren’t sure what goes in your cart or bin, visit eldoradodisposal.com or call us at 530-626-4141 to speak to one of our recycling experts.

El Dorado Disposal also has a Sustainability Team that works closely with our drivers collecting materials from carts and bins. This team receives notes and pictures from drivers who identify contamination. After receiving this information, our sustainability team contacts customers by email, phone, and/or mail to educate customers about what is considered contamination and help them recycle right.

Do Recycle

- All California redemption value drink containers
- Clean paper and mail
- Corrugated cardboard
- Cereal boxes (without plastic liner)
- Shoe and gift boxes
- Brown paper bags
- Newspaper
- Paperback books
- Magazines and catalogs
- Frozen food boxes
- Plastic bottles, jars, and jugs
- Plastic dairy tubs (yogurt, margarine)
- All colors of glass jars, bottles, and jugs with lids removed
- Aluminum cans
- Steel or tin cans

Don't Recycle

- Plastic bags
- Food scraps, food-soiled paper, or food-soiled boxes
- Expanded polystyrene foam (Styrofoam)
- Prescription vials
- Paper towels, plates, or napkins
- Disposable diapers and wipes
- Cleaning wipes
- Ceramics or dishes
- Light bulbs
- Mirrors or window glass
- Scrap metal
- Needles or syringes
- Containers that held toxics (antifreeze, oil, pesticides, etc.)



Credit: Mykola Soslukin | iStock | Getty Images Plus

Why do I separate my recycling from the trash if it all goes into the same truck?

Many routes in our area, especially in our county’s outskirts, are serviced by split-body trucks. These trucks have two compartments in the back. When the trash is being collected, the cart is emptied into a chute that sends material into the trash compartment. When it is time to empty the recycling, a divider, called a flapper, covers the trash chute, opening the recycling chute. Then recyclables are emptied into the recycling compartment. Want to see how these trucks work? Check out our video at youtu.be/qUoBv0l6gxc.

Why does my recycling have to be loose in the cart?

We collect paper, plastic, glass, and metal together in one cart. Eventually these items need to be sorted by material types to be processed and become new products. They cannot be sorted efficiently if they are bundled together inside a bag. Plus, we cannot recycle the bag with our recyclable materials, so it is considered a contaminant. Please do not bag your recycling!

Can I put decorative bark into my yard waste cart?

No. Our yard waste carts are for natural vegetation only, which is compostable, such as plant material, grass clippings, leaves, weeds, and trimmings. Chemically treated material, such as decorative bark, is not accepted. For a full list of acceptable and unacceptable materials, visit eldoradodisposal.com.

“Oops” tag program continues

Our “Oops, Let’s Recycle Right!” program began more than two years ago to help educate our customers individually on what can and can’t be included in the recycling. While we started this program with residential customers, we’ve recently expanded it to commercial accounts as well.

Here’s how the program works. When one of our drivers spots contamination in a customer’s cart or dumpster, they leave an Oops! tag with recycling do’s and don’ts and direct feedback. We also give you a call and send a recycling information packet about acceptable and non-acceptable recyclable items to help inform you about proper recycling. If a second tag is placed on your cart or dumpster, it will not be serviced. Once contaminants are removed, the recycling will be collected on the next day of service. After the third incident, you will be charged a contamination fee.

If you aren’t sure what goes in your bin, visit eldoradodisposal.com or call us at 530-626-4141 to speak to one of our recycling experts.

Learn more

For answers to all your recycling questions, check out our mobile app where you can search by material. You can download the app from Google Play or the App Store by looking for “El Dorado Disposal.” You can also use our online tool at eldoradodisposal.com/waste-wizard. Our customer service staff is always happy to answer questions Monday through Friday, 8 a.m. to 5 p.m., at 530-626-4141.





Year in review

We are proud to partner with the communities we serve on Clean-Up events. Over the past year, El Dorado Disposal provided large dumpsters at numerous locations for the public to dispose of items for free. Here’s a summary of what we collected:

- At the Camino Clean-Up on April 23, 2022, we removed 2.53 tons of mixed recycling, as well as 8.18 tons of mixed solid waste (garbage).
- At the Logtown Clean-Up on May 14, 2022, we removed 1.52 tons of mixed recycling, 1.6 tons of yard waste, and 4.9 tons of mixed solid waste.
- At the Pollock Pines Clean-Up on May 21, 2022, we removed 5.31 tons of yard waste, as well as 42.18 tons of mixed solid waste.
- On September 17, 2022, at the Cameron Park Community Services District’s Clean-Up, we removed 2 tons of recycling, 3 tons of yard waste, and 11.58 tons of mixed solid waste.
- On September 29, 2022, at the El Dorado Hills Community Services District’s Clean-Up, we removed 2.88 tons of mixed recycling, plus 9.56 tons of mixed solid waste.
- At the Placerville Clean-Up on October 15, 2022, we removed 1.97 tons of metal and mixed recycling and 9.94 tons of mixed solid waste.

More clean-ups are planned during 2023. We will take part in the Cameron Park Community Services District Clean-Up this spring, as well as others throughout the year. Watch for us in your area.

We appreciate your business

Like many businesses, we have seen an increase in our costs for materials and services during the past year. In addition, we are facing added costs as we implement California’s SB 1383. For instance, a combination of food and yard waste is more costly to process than clean yard waste by itself. We do everything we can to operate as efficiently as possible, but we have had to increase our residential and commercial disposal fees recently. We thank you for your understanding. Whether you’re a residential customer, a commercial customer, or a self-hauling customer using our Material Recovery Facility, we appreciate you. We will continue to strive to make our services well worth the prices you pay.

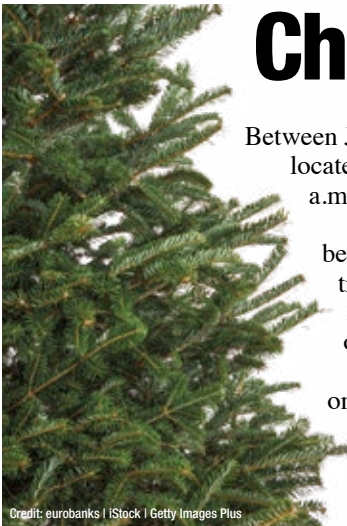


Bike giveaway programs

The holiday season brings a lot of generosity and gift-giving to the residents of El Dorado County. We enjoy lifting the spirits of those around us just as much as you do. Through the Waste Connections “A Christmas Promise” program, our staff purchased and built 152 new bikes. We thank our community partners for their assistance, including Anthem Blue Cross, Doug Veerkamp General Engineering, Diamond Springs El Dorado Fire, and many others. The bikes were distributed the week before Christmas to local agencies, such as Big Brothers Big Sisters, El Dorado County Office of Education, The Divide Rotary, and CASA.



Our partners, the Cameron Park Rotary, have been giving away bicycles and helmets for more than 15 years to young people, homeless adults, fire victims, and now Ukrainian and Afghan refugees. Cameron Park Rotary collects bikes from our Material Recovery Facility to be refurbished and then given to those in need. The club partners with Folsom Lake Prison, offering inmates the opportunity to give back to their communities while building confidence, self-esteem and learning skills that benefit them upon release. Over the years, the club has given away more than 6,000 bikes across El Dorado County and our entire region.



Credit: eurobanks | iStock | Getty Images Plus

Christmas tree recycling

Between January 2 and January 15, you can drop off your natural Christmas tree for free recycling at the Material Recovery Facility (MRF), located at 4100 Throwita Way, Placerville. Trees must be free of tinsel, garlands, lights, ornaments, and stands. The MRF is open from 8 a.m. to 5 p.m. daily. Flocked trees are not recyclable but will be accepted as trash and a fee will be charged.

If you have curbside service, natural Christmas trees will be picked up from the curb during your yard waste collection week between January 2 and January 31. If you do not have yard waste collection in your area, we will pick up the Christmas trees on your trash-only collection weeks. Please cut the tree into pieces and bundle the pieces with twine or rope. Bundles cannot be more than 3 feet long and 18 inches in diameter. Place bundles on the ground next to your cart. Trees must be free of tinsel, garlands, lights, ornaments, and stands. Flocked trees are not recyclable and should be delivered to the Material Recovery Facility for disposal.

Residents of the El Dorado Hills Community Services District may drop off natural Christmas trees for the tree chipping event on January 7, from 8 a.m. to 3 p.m., in the north parking lot at 1021 Harvard Way in El Dorado Hills. Trees must be free of tinsel, garlands, lights, ornaments, and stands. Flocked trees will not be accepted.

Residents of the Cameron Park Community Services District may drop off natural Christmas trees from December 31 through January 31 in the lower parking lot at Cameron Park Lake, located at 2989 Cambridge Road. Trees will be accepted each day from 7 a.m. until dusk. Trees must be free of tinsel, garlands, lights, ornaments, and stands. Flocked trees will not be accepted.

Recycle your batteries!

- Tape the terminal ends of your household batteries.
- Bag lithium-ion batteries individually in sealable plastic bags.
- Do not place lithium-ion batteries inside your trash or recycling cart because they present a fire risk!
- Properly dispose of lithium-ion batteries or devices with these batteries, as well as other household batteries, using one of these options:
 - > Residential customers can request a battery container and, once it's full, ask for collection on your next service day. To set up this free service, please call Customer Service at 530-626-4141. Corroded, lead acid, wet cell, and automotive batteries are not accepted through this curbside program.
 - > The recycling centers in El Dorado Hills (4421 Latrobe Road) and Cameron Park (3500 Palmer Drive) accept batteries from 9 a.m. to 3:30 p.m., Tuesday through Saturday. (Please note, batteries are no longer accepted at the Placerville Recycling Center.)
 - > The Household Hazardous Waste Collection Facility (4100 Throwita Way) accepts batteries from 9 a.m. to 4 p.m., on Fridays, Saturdays, and Sundays. (Automotive batteries only are accepted daily at the Material Recovery Facility.)



Examples of properly taped batteries are shown here. Please use clear tape to tape both ends of alkaline batteries (middle). For lithium “button” batteries, please tape both sides.



Clean Lawnmower Incentive Program

Did you know that using an old gas mower for one hour pollutes the air about as much as 11 average cars operating for an hour? That’s why the El Dorado County Air Quality Management District offers the Clean Lawnmower Incentive Program (CLIP). Through CLIP, El Dorado County residents who replace gasoline or diesel-powered lawnmowers with cordless, zero-emission, electric mowers may be eligible for a \$200 rebate. Pre-approval is required, and other conditions apply. To learn more about this program, please call 530-621-7501 or visit EDCcleanair.org.

What to do with old electronic devices

When you get new electronics, never throw the old ones into the trash. The materials inside them can cause pollution in landfills, but they can be useful in making new devices. According to the US Environmental Protection Agency, “Electronic products are made from valuable resources and materials, including metals, plastics, and glass, all of which require energy to mine and manufacture. Donating or recycling consumer electronics conserves our natural resources and avoids air and water pollution, as well as greenhouse gas emissions that are caused by manufacturing virgin materials.”

Consider giving old, working devices to someone else. You could donate them to an organization like a community center. You might sell them to a friend or a store like GameStop. You can even learn online how to take them apart and rebuild them. Finally, if there’s no life left in your electronic gadgets, recycle them.

El Dorado Disposal accepts a wide variety of electronic waste (e-waste) for recycling, including televisions, monitors, laptops, desktop computers, hard drives, network equipment, printers, scanners, fax machines, game consoles, and many other consumer electronics. E-waste is accepted daily at the Material Recovery Facility, 4100 Throwita Way in Placerville, and during regular operating hours at the Cameron Park and El Dorado Hills Recycling Centers (see page 8 for details). Annually, residential customers receive a voucher by mail to have one electronic item picked up at curbside. However, this service is only available by appointment and is limited to one free item and up to three items maximum per appointment. (Most items are charged \$15 each, but items with Freon are an extra \$25). For details, call 530-626-4141.

Paper, ink, and toner must be removed from printers prior to disposal. Batteries must be removed from all electronics and recycled separately. If an item has a non-removable battery, we will not be able to accept it. Cell phones and other devices with internal batteries that cannot be removed can often be returned to retail stores that sell them, so check with the retailer.



Keep those reusable shopping bags clean

Reusable shopping bags offer several advantages over plastic bags. They are sturdy, they hold more, they can be used for years, and they can even be stylish. But they can get dirty and do need to be cleaned. The new year is a good time to take stock of your reusable bags. Here are some tips to help you clean your reusable shopping bags and keep them clean throughout the year:

- Wash your hands after you get home from the store and before unloading groceries.
- Wash your reusable fabric grocery bags frequently. Check to see whether the bag has cleaning instructions and follow them. If none are provided, turn the bags inside out before tossing them into the washing machine. Detergent and cold water will do the trick. You can dry fabric bags on low heat or line-dry them.
- Wipe out the inside of plastic reusable or insulated bags with a damp, soapy cloth and then wipe away any residue with a clean, damp cloth. Turn the bags inside out and allow them to air-dry.
- Label bags for meat, produce, dairy, packaged food, and cleaning supplies. For added food safety, place raw meat into a disposable plastic bag before putting it into a reusable bag. Doing this will help prevent cross-contamination.
- Never use bags that you use for groceries as gym bags, diaper bags, or laundry bags.
- Put clean bags near the door or place them in your car so you’ll have them handy the next time you head to the store.



Not all bears are hibernating *Protect your garbage with special bear-resistant carts*



Many of our local bears hibernate in the winter, but not all of them. Hibernation is a response to low food supplies, and local bears have learned that our area offers an abundance of food year-round at outdoor gathering areas and in our trash carts.

Unfortunately, bears with access to garbage pose increased public health and safety issues, as well as increased danger for the health and well-being of bears and other wildlife. It can also result in garbage being scattered on properties and roadways.

If you live in an area where bears have been known to get into trash carts, you can order a heavy-duty, locking, bear-resistant cart. We now offer these carts in several sizes. These carts are especially useful in bear country for our elderly or disabled customers. Deterring bears and other wildlife from your cart requires proper cart care and trash disposal, but please note you should NO LONGER use chemical deterrents. (You may use ammonia.) Instead, store your containers in a secure location and bring containers in immediately after service. You can also freeze food waste before placing it in the cart the night before service to reduce odors.

Call us at 530-626-4141 for details on ordering a bear cart or to learn more about bear prevention.



Keep hot ashes out of carts

It’s the time of year that many of us enjoy gathering around the fire — whether indoors around the fireplace or outdoors around the fire pit. Wherever you are enjoying a wood fire, be sure to safely dispose of all ashes. Hot coals and ashes should never be placed directly into your curbside trash cart. Improperly discarded material can pose a fire risk and jeopardize the safety and health of your home and family, as well as the truck driver, waste and recycling facility workers, and the public. Coals and ashes can remain hot enough to start a fire for many hours, perhaps days, after you think the fire is out. As a safety precaution, treat all coals and ashes as hot. Follow these guidelines for safe disposal:

- Allow coals to burn out completely and let ashes cool. Ashes should be cool enough to handle without gloves before you prepare to dispose of them.
- Please bag cooled ashes and place in your trash cart.
- As a precaution, keep the trash cart with cooled ashes outside and away from the side of the house or any trees.
- Be sure there are no other combustible materials nearby.
- Never place ashes and coals in your yard waste or recycling carts.

What goes in your commercial bins?

Organics Bin

Place all material free and loose, in a paper bag or a GREEN BPI-certified compostable bag.

All food waste: fruits, vegetables, meats, shellfish, dairy, bones, and coffee grounds/filters

All food-soiled paper products: napkins, paper plates, paper towels, pizza boxes, coffee cups, milk /ice cream cartons without plastic

Unacceptable in Organics Bin

Plastic bags	Compostable plastic utensils or straws	Plastic of any kind
Foil or metal of any kind	Liquids	Pressure treated or painted wood
Pet waste or litter	Hazardous Waste	Styrofoam
Hot ashes	Diapers	Glass of any kind

Trash Bin – Black lids

All items need to be bagged and placed in the bin.

Bubble wrap/Air pillows	Plastic wrap/Film	Plastic straws/Utensils
Styrofoam peanuts/Blocks	Clothes/Leather	Dry paint cans – Lids removed.
Napkins/Used paper products	Shredded paper	Pens/Pencils
Coffee cups/Lids/Keurig pods	Padded envelopes	Buckets

Unacceptable in all Commercial Bins

All construction material including but not limited to concrete, treated wood, scrap metal, drywall, rocks, and dirt
Never place hazardous materials, batteries, oil, electronic waste, light bulbs, or tubes in your bins or carts.

Recycle Bin – Yellow/Blue Lids

Place items in bin free and loose (unbagged).

Plastic: All items need to be rinsed out and dry. Plastic bottles, tubs, jugs, and jars. Lids must be removed and put in the trash.

Paper: All items need to be dry and clean. Newspaper, magazines, junk mail, envelopes, catalogs, bags, office paper, phone books, and flattened cardboard boxes.

Glass: All clean and dry bottles and jars, with or without labels. Lids removed and placed in the trash.

Metal: All clean and dry aluminum, tin, steel and bi-metal food or beverage containers with or without labels. Lids removed and put into the trash.

Unacceptable Material for Recycling

Plastic bags	Styrofoam peanuts/blocks	Plastic wrap
Shrink-wrap or film	Bubble wrap/air pillows	Wood
Fabrics or clothing	E-Waste	Hazardous Material
Batteries		



Download our App!



530.626.4141 ElDoradoDisposal.com

El Dorado Disposal Material Recovery Facility

Material Recovery Facility (MRF)

4100 Throwita Way, Placerville

Open: 8 a.m. to 5 p.m., 7 days a week

Closes at 2 p.m. on: Easter, Memorial Day, July 4th, Labor Day, Thanksgiving, Christmas Eve, and New Year’s Eve

Closed: Christmas Day and New Year’s Day

Materials Accepted at the Transfer Station for a Charge:

- Commercial and household waste
- Construction and demolition waste
- White goods, such as refrigerators, freezers, washing machines, stoves, air conditioning units, microwaves, etc.
- Tires (mounted or unmounted on rims)
- Yard waste
- Carpet

Materials Accepted at the MRF for Free:

- Cans and bottles
- Cardboard, office paper, newspaper, and magazines
- Glass food and beverage bottles and jars (unbroken)
- Steel, tin, and aluminum cans
- Plastic food and beverage bottles, jugs, cups, and tubs

- Consumer electronics (e-waste), such as televisions, computers, monitors, stereos, VCRs, cell phones, etc.
- Automotive batteries
- Mattresses and box springs – Please keep clean and dry.

Household Hazardous Waste Collection Facility

4100 Throwita Way, Placerville

Open to Residents: 9 a.m. to 4 p.m., Fridays, Saturdays, and Sundays only

Materials Accepted from Residents at No Charge:

- Medical sharps (such as needles and lancets) in an approved sharps container or a sealed rigid plastic bottle or jug
- Unwanted over-the-counter and prescription medications (no “controlled substances” — Contact your pharmacist to ask whether an old prescription is considered a controlled substance.)
- Household chemicals, such as polishes, oven and drain cleaners, lighter fluid, mercury-containing items, cooking oil, etc.
- Personal care products, such as cosmetics, nail polish, and polish remover

- Garden and landscape products, such as fungicides, insecticides, and pool chemicals
- Garage or workshop chemicals, including paint, paint thinners, wood preservatives, antifreeze and other automotive fluids, used motor oil and filters, etc.
- Rechargeable and alkaline batteries (with clear tape covering the +/- ends)
- Fluorescent light bulbs and tubes (limit of 15)
- Propane tanks (limit of 4 single-use tanks or 2 five-gallon tanks)

Limit of 15 gallons or 125 pounds per visit

Hazardous Waste Disposal for Businesses:

Businesses generating less than 220 pounds or 27 gallons of hazardous waste per month may dispose of hazardous waste at this facility by appointment and for a fee. Appointments are available only on Fridays, from 8 to 9 a.m. Businesses must obtain a Hazardous Waste Generator Permit. For more information or to schedule an appointment, call 530-295-2818.

Off-Site Recycling and Redemption Centers Residential Only

Placerville

580 Truck Street

Open: 9 a.m. to 3:30 p.m., Tuesday through Saturday, with ½ hour break at noon

Note: For the safety of employees, all recycling centers will close when the temperature has reached 100 degrees.

Materials Accepted:

- Buy-back for CRV beverage containers (aluminum, plastic, and glass)

Cameron Park

3350 Saratoga Lane

Open: 9 a.m. to 3:30 p.m., Tuesday through Saturday, with ½ hour break at noon

Note: For the safety of employees, all recycling centers will close when the temperature has reached 100 degrees.

Materials Accepted:

- Green waste bin (2 cubic yard maximum per day)
- Buy-back for CRV beverage containers (aluminum, plastic, and glass)
- Cardboard bin for all cardboard, newspaper, and magazines
- E-Waste accepted for free (Limit of 4 TVs)
- Drop-off box for household batteries only (with clear tape covering the +/- ends) – No car, motorcycle, or other large batteries accepted.

El Dorado Hills

4421 Latrobe Road

Open: 9 a.m. to 3:30 p.m., Tuesday through Saturday, with ½ hour break at noon

Note: For the safety of employees, all recycling centers will close when the temperature has reached 100 degrees.

Materials Accepted:

- Buy-back for CRV beverage containers (aluminum, plastic, and glass)
- Green waste bin (2 cubic yard maximum per day)
- Cardboard bin for all cardboard, newspaper, and magazines
- E-Waste accepted for free
- Drop-off box for household batteries only (with clear tape covering the +/- ends) – No car, motorcycle, or other large batteries accepted.

Visit the CalRecycle website, calrecycle.ca.gov, for current California Redemption Value (CRV) pricing.

We want your suggestions, questions and comments!

El Dorado Disposal Service

P.O. Box 1270

Diamond Springs, CA 95619

Customer Service:

530-626-4141 or 916-985-1162
eldoradodisposal.com

Funded by
El Dorado Disposal Service
Copyright© 2023
Waste Connections, El Dorado
Disposal Service, and Eco Partners, Inc.
All rights reserved.



Please recycle after reading.