



THE PowerLines REPORT

1 | Staying Safe This Year

2 | Elevate TV

3 | College Scholarships

4 | Introducing the Giga-Pod

JANUARY 2021

Keeping Our Community Safe

A message from Jasen Bronec, CEO

Entering into this new year isn't business as usual. This is a time of great difficulty and uncertainty as we worry about loved ones, essential workers, students, teachers, and small businesses. Because of this, I want to take a few moments to tell you what steps DMEA is taking to keep our essential workers and communities safe and healthy during COVID.

DMEA is taking numerous steps to minimize employee exposure. We are encouraging and enforcing mask and distancing requirements, as well as regularly sanitizing our facilities. We have conducted proactive testing for our employees. In addition, we are encouraging remote work and hosting virtual meetings instead of in-person gatherings.

For our employees who cannot work remotely, I ask for your help in keeping them healthy. Our lineman and service technicians are doing their part to minimize exposure without sacrificing member services or safety. If you come in contact with one of these essential workers, please wear a mask and remain six or more feet away when possible. This helps ensure DMEA can continue to keep your lights on and your small businesses running. By following mask and social distancing recommendations when in contact with our crews and when out and about, you are also helping keep our communities healthy. Thank you.

Whenever possible, skip the trip to our offices. We are still here working for you and can provide all necessary services over the phone, via email, or online. If you haven't done

so yet, be sure to register your DMEA account online at www.dmea.com. This will give you 24/7 access to pay your bill, update payment information, and monitor energy use.

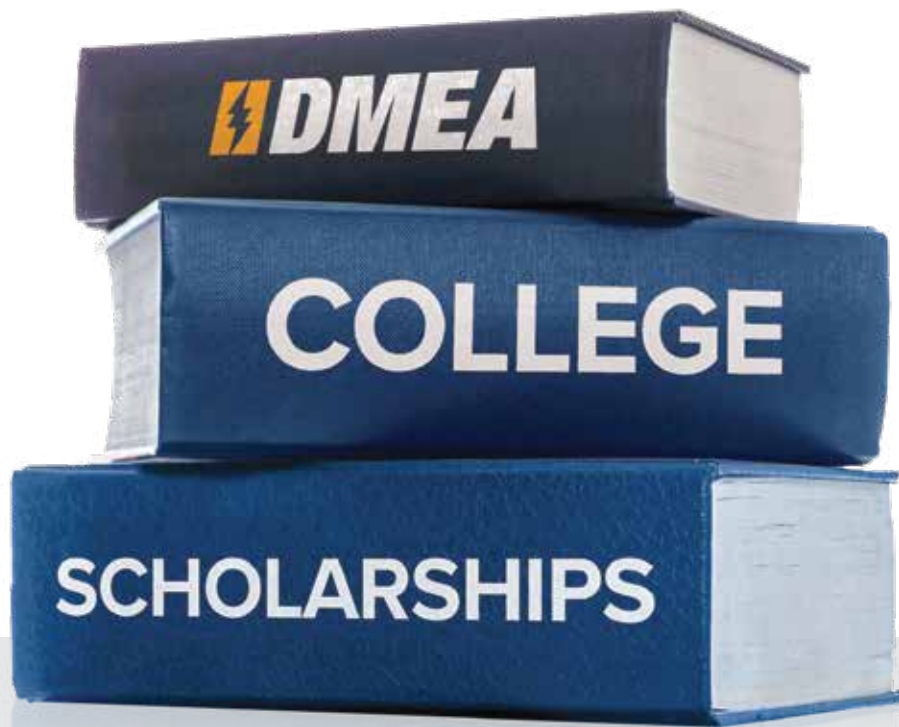
Lastly, if you or someone you know are struggling to make ends meet, we can help. DMEA has a COVID support program that can help pay all or a portion of your monthly electric bill. Please reach out to us directly at 877-687-3632 for more information.

As we say hello to 2021, our commitment to protect essential workers, your livelihoods, and the health and safety of our communities remains at the forefront. Stay healthy, folks.

COVID SUPPORT PROGRAM

If you need assistance with your monthly electric bill please reach out to us directly at 877-687-3632 for more information.





This year, DMEA is offering \$51,000 in college scholarships to local graduating seniors and continuing education students. Let us help make your dream a reality!

High School Graduate Scholarship

Amount: \$2,000

Scholarships awarded to 1 graduate from Cedaredge, Hotchkiss, Olathe, and Paonia High School, 1 graduate of a non-traditional school in either Delta County and Montrose County, 2 graduates from Delta High School, and 3 graduates from Montrose High School

Continuing Education Scholarship

Amount: \$2,000

Scholarships awarded to 3 students who are currently enrolled full-time in an accredited post-high school educational institution.

Colorado Mesa University Montrose Campus Scholarship

Amount: \$2,000

Scholarships awarded to 2 students who are planning to attend or are currently enrolled in full-time in Colorado Mesa University - Montrose Campus.

Technical College of the Rockies Scholarship

Amount: \$2,000

Scholarships awarded to 2 students who are planning to attend or are currently enrolled full-time in the Technical College of the Rockies

Line Worker Scholarship

Amount: \$2,000

Scholarships awarded 2 students currently enrolled in a lineman school who are DMEA members or dependents of DMEA members.

Guzman Energy Character Award

Amount: \$3,000

Scholarship awarded to 1 high school graduate applicant who has demonstrated superb character.

Apply by March 1, 2021 at www.dmea.com/scholarships



DON'T MISS A MINUTE

Ditch traditional cable TV and never miss a game. Instead, watch your favorite shows over the same reliable fiber network that brings you fast internet.

Elevate TV is a simple app-based live TV service. Watch it on your big-screen TV AND all your favorite smart devices like tablets, phones, and computers.

Included FREE features:*

- Download on unlimited devices and watch on up to 3 devices at the same time
- 100 DVR hours
- 72-hour look back
- Hundreds of movies and shows on demand
- All high-definition channels
- Watch TV on the go with Elevate TV Everywhere
- No contract required and no activation fees



elevateinternet.com / 844-386-8744     

Elevate TV requires internet service through Elevate. Pricing is not bundled with other services, but is subject to change. Channel lineups are also subject to change, and local channels are based upon your location. For the most up to date lineups visit elevateinternet.com. *Features may be subject to limitations from content providers.

PLANS

Local Lineup \$34.95/month

Just basic local broadcast channels like CBS, FOX, NBC, and PBS. 20+ channels

Expanded Plan \$99.95/month

Mid-level package perfect for families. Get the Local Lineup plus more news, sports, and entertainment channels like Fox News, MSNBC, Disney Channel, and HGTV. 70+ channels

Extreme Plan \$129.95/month

The ultimate entertainment package for true TV lovers. Get even more of your favorites to satisfy every member of your family, like the Outdoor Channel, Nick Jr., and ESPNU. 125+ channels

ADD ON FEATURES

Starz Encore Premium Channels \$15.95/month

Showtime Premium Channels \$17.95/month

Additional simultaneously streams \$2/device/month

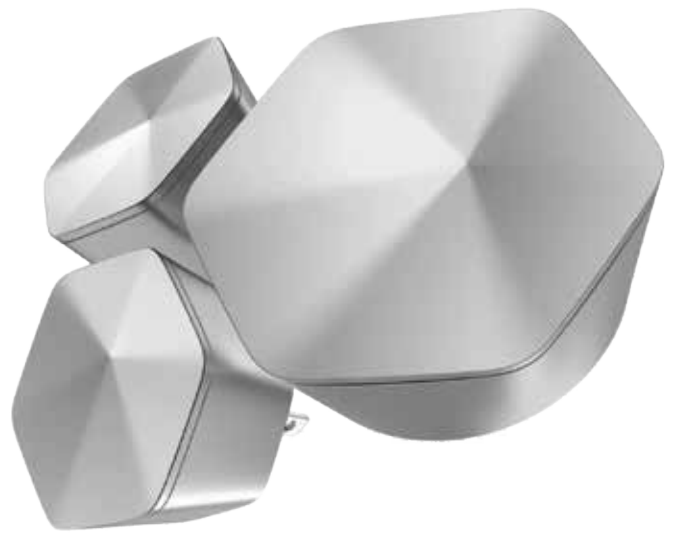
Set Top Box \$8.95/month

Additional DVR hours \$5/50-hour block/month

INTRODUCING THE ELEVATE™ GIGA-POD

Powered by
Plume HomePass®

Get wall-to-wall Wi-Fi coverage, plus extra security, parental controls, and safety features all at the touch of a button. The Elevate Giga-Pod is an all-inclusive home Wi-Fi system that lets you see what devices are connected - and kick off those that shouldn't be - monitor your speeds, set up guest access, security settings, and more.



WHAT BETTER HOME WI-FI LOOKS LIKE



Adaptive Wi-fi does the work for you. Each Elevate Giga-Pod is its own smart Wi-Fi router and they work together to ensure your network is just as powerful in the basement as it is in the office.



Parental controls keep your kids safe. Restrict the content, including specific sites, your children can access online. Set schedules for certain devices and even freeze the internet on your teen's phone at night in hopes they'll finally go to bed.



Security is more important than ever now that we're more connected than ever. Block suspicious activity and devices you don't recognize, quarantine compromised devices, block SPAM sites, and prevent phishing and other fraud.

GET STARTED WITH A GIGA-POD

- \$5.95/pod/month
- Free Plume Home Pass Membership included with purchase
- Order online at www.elevateinternet.com/gigapodorder or call 844-386-8744

ELEVATE™

FAST INTERNET ▶ (for real)

elevateinternet.com / 844-386-8744



A Touchstone Energy® Cooperative 

Montrose Office

11925 6300 Road
Montrose, CO 81401
M, W, F; 8:00am-5:00pm
T & Th; 8:00am-6:00pm

Read Office

21191 H 75 Road
Delta, CO 81416
M & W; 9:00am-4:00pm

Contact Us:

1-877-687-3632 | www.dmea.com |    

Your Board of Directors:

Bill Patterson, District 1 *Kyle Martinez, District 2*
Brad Harding, District 3 *Ken Watson, District 4*
Chris Hauck, District 5 *Damon Lockhart, District 6*
Enno Heuscher, District 7 *Stacia Cannon, North*
Jock Fleming, South

DMEA Board Meetings are open to all members and are generally held on the 4th Tuesday monthly beginning at 3PM with the public comment period at 5PM. Call 970-240-1212 to confirm date, time, and location.

Recipes Info:

Submit recipes, including your name, address, and phone number to:

DMEA Newsletter
PO Box 910
Montrose, CO 81402

Or email your information to communications@dmea.com.

If your recipe is published, claim your prize by calling (269)598-9386 within 60 days.

HOME COOKING



No Dough Pizza

Patsy Denham, Olathe



Ingredients:

Crust:

8 oz package of full fat cream cheese
2 eggs
1/4 tsp ground black pepper
1 tsp garlic powder
1/4 c grated parmesan cheese

Topping:

1/2 c pizza sauce
1 1/2 c shredded mozzarella cheese
Any additional toppings; ham, sausage, mushrooms, peppers, etc.

Directions:

Lightly spray a 9x13 inch baking dish with cooking spray. With a handheld mixer, mix cream cheese, eggs, pepper, garlic powder, and parmesan cheese until combined. Spread into baking dish. Bake for 12-15 minutes until golden brown. Allow crust to cool for 10 minutes.

Spread pizza sauce on crust. Top with cheese and toppings. Sprinkle pizza with garlic powder. Bake 8-10 minutes, until cheese is melted.

WE'RE IN NEED OF YOUR RECIPES!

Submit your best recipe, along with your name, address and photo of your dish, to communications@dmea.com

If we print your recipe, you win a \$25 gift card.



WIN A BURTON SNOWBOARD!

Participate in DMEA's all-new safety program, PLAY IT SAFE. Open to kids in K through 5th grade. Each month, DMEA will announce a new electrical safety problem that your student can research and resolve. The best submission wins, and the prizes are awesome!

JANUARY SAFETY DILEMMA

Bill hits a pad mounted transformer while plowing snow. Bill doesn't notice but Susie does when her lights and X-Box quit working. Susie goes outside to tell Bill and notices a green box with wires hanging out and making noise. What should Susie do?

What to submit:

This month, your submissions must be in the form of a comic strip. Comics must be uploaded as a PDF or JPEG at dmea.com/safety-competition.

When to submit:

Entry period is January 1, 2021 - January 31, 2021.

Who can participate:

Kids in grades K-5

What you can win:

This month's prize is a Burton snowboard, boots, and bindings!

