

THE

# PowerLines

REPORT

1



Improve Your Co-op, VOTE!

2-3



Smart Technology, Smart Energy Rebates

4



Tree Planting Guide

September 2018

## Celebrating 80 years by setting a new course for our future!

- Jasen Bronec, CEO

This year, DMEA turned 80 years old. As we look back over the history of our communities, our industry, and our members' lives during these 80 years, the only thing that has stayed the same is change! Well, that and our Articles of Incorporation.

DMEA has long been a cooperative that looks to the future to adjust to the changes in our industry and the changing needs of our communities and members. As part of our efforts to continue to position DMEA for the future, the DMEA Board has recommended that our Articles of Incorporation be amended and restated.

### What does amended and restated mean?

DMEA members have voted to amend our Articles of Incorporation—the foundational document of your cooperative—several times in the past 80 years. DMEA's board is proposing some additional changes (that's the "amended" part) and combining the new changes with the previous Articles into a single document (that's the "restated" part). Amending and restating the Articles, as recommended by the board, will add the new amendments to the ones that have been voted on by our members over the years and bring them into a single, more modern document.

### What other revisions are being proposed?

One of the major revisions being recommended by the Board will allow DMEA to operate under a law called the Colorado Cooperative Act. The Colorado Cooperative Act is a more modern option than the one under which DMEA currently operates. It would give DMEA operational and financial flexibility to reach its future goals. The law allows cooperatives like DMEA to issue capital stock to investors, including non-members. The issuance of capital stock, when the Board determines it to be in the best interest of DMEA, is an additional way for DMEA to raise funds that could be used to continue to grow into new services, like Elevate; to purchase power from local sources, like qualifying facilities; or to take on whatever new challenges and opportunities our industry faces.

### Will these changes affect member control?

If the proposed Articles changes pass by a vote of the members, DMEA will remain your electric co-op. These changes will NOT make us an investor-owned utility. Members will retain their voting rights. The holders of the proposed capital stock will NOT have voting rights. This protection is written into the revised Articles themselves. This means, members retain local control of the co-op through the right to vote in the election of the Board and to decide other important co-op issues, like these proposed Articles changes.

### When and how can I vote?

Members can vote by mail or in person. All members will receive a ballot by mail in late September. The ballot will include an information sheet showing all of the proposed revisions and explanations of each change. It will also include notification of a special member meeting. Please read these materials and give them consideration when deciding your vote. Members may also vote in person at the special meeting, which will be held on Tuesday, October 16, at 10:00 a.m. at the DMEA headquarters in Montrose, 11925 6300 Rd.

Your Board of Directors has approved the DMEA Amended and Restated Articles of Incorporation and recommends you VOTE YES for the future of your co-op.

### Learn More

Join us at one of our Town Hall Meetings

Sept. 10 - Grand Mesa Art Center, Cedaredge | 5 p.m.

Sept. 11 - DMEA Read Service Center, Delta | 1 p.m.

Sept. 11 - Diamond Joe's, Crawford | 5 p.m.

Sept. 12 - Delicious Orchard, Hotchkiss | 5 p.m.

Sept. 13 - Orchard City Town Hall, Austin | 5 p.m.

Sept. 14 - DMEA Headquarters, Montrose | 5 p.m.

# GOING GREEN – GETTIN’ GREEN

DMEA and Elevate want you to harness the power of technology to save money—from smart appliances to ENERGY STAR ratings to helpful tips and tricks. Check out the largest rebates members received in 2017 below, contact us with questions, and then get your home green to save the green! Have additional ideas?

## Upgrade your lighting with LEDs.

An easy way to reduce energy use is to be more efficient with your lighting. There are a ton of smart home devices out there that can help with this, but the largest rebate we see is members installing LED lights throughout their home. There are also LED lights available that can tie into a smart home hub, so you can control lighting when you are at home or on the go.

With more lighting options available than ever today, LEDs remain the smartest and simplest choice. You'll cut your lighting costs and earn a rebate from DMEA. LEDs use approximately 75% less energy than traditional incandescent bulbs!

An ENERGY STAR rating means the LED was put through rigorous testing to ensure high quality, high efficiency, and high performance, particularly in testing color quality and light output. The rigorous testing also helps consumers know they are using a safer product.

### Tips for LED bulb shopping:

- Review the guidelines on the 2018 DMEA LED bulb application online at [www.dmea.com/content/rebates](http://www.dmea.com/content/rebates)
- Note the quantity, type, and watts of bulbs in your home (don't forget the outdoor lights)
- Head to the store and look for the ENERGY STAR logo on the LED box
- Make sure to use the LED watt conversion chart on the bulb box (for example 60-watt incandescent = 9-watt LED)
- Complete the 2018 DMEA LED bulb application by December 28, 2018 and return via mail, or email



Photo courtesy of energystar.gov.

## Replace your old fridge for bigger savings.

How old is that refrigerator in your kitchen or down in your basement? Did you know that by recycling that old one and getting a new ENERGY STAR model, you will not only receive a great rebate from DMEA, but your energy use will decrease too?

ENERGY STAR models are available for less than \$500 for those on a budget. If you are wanting something that can keep you connected, check out the WiFi enabled ENERGY

STAR models. Smart refrigerators can help you plan meals, coordinate schedules, and even tell you when you're low on milk.

If your unit is 10 years old, it is time to take a look at upgrading. ENERGY STAR certified models must use 10% less energy than the minimum federal efficiency standards, meaning you will notice an energy savings every month. If you are looking for the most efficient model, make sure to look at units with a top-mounted freezer. These use less energy than a 60-watt light bulb.

Want to find out how much you could actually save by replacing your refrigerator? Check out the Flip your Fridge calculator at [energystar.gov](http://energystar.gov).

Don't forget to properly recycle that old model! DMEA will give you an additional \$70 for recycling. See the 2018 DMEA appliance rebate application for more information.



## Refrigerators

- ✓ More than 240 members received rebates.
- ✓ Rebates totaled approximately \$18,000.
- ✓ Rebate: \$30/unit

## Smart move to choose a smart dishwasher.

### Dishwashers

- ✓ More than 200 members received rebates.
- ✓ Rebates totaled approximately \$4,000.
- ✓ Rebate: \$20/unit



Ok, so smart dishwashers can't load themselves... yet. But they can connect to your smart device, so you can get alerts about your rinse agent level, track detergent use, or if leak occurs. Even better, you can start your dishwasher from anywhere through an app. Combine that with the water and energy-saving technology of ENERGY STAR and it's a win-win.

Dishwashers have dramatically improved over the last 10 years. Not only to increase efficiency, but to help you get more out of your dishwasher. The newer models have sensors to detect the type of load and then select the appropriate cycle to help you save. These sensors can also detect soil levels to ensure your dishes get clean. Newer models also have improved water filtration and fans to use fresh air to dry your dishes.

### Main reasons to look at a new dishwasher:

- \$20 DMEA rebate
- Enjoy cleaner dishes
- Monthly savings on your electric and water bill
- Start the dishwasher from anywhere with a smart model
- Make a difference by saving the environment—new models use less water and reduce air pollution and greenhouse gases

## Save on water use with a new washing machine.

It isn't just about the energy savings when you take advantage of member rebate programs, especially when you upgrade your washing machine. ENERGY STAR rated models use 33% less water, so you can save on your water bill too!

Just like a lot of the newer appliances out there, washing machines now are smart too. You can load up your washer in the morning and turn it on just before you leave work. No more wet musty-smelling clothes waiting all day for your return. Or, maybe you'd like your washer to fix itself and run it's own diagnostic tests. These are all possible now thanks to smart washing machines.

### Washing Machine

- ✓ More than 140 members received rebates.
- ✓ Rebates totaled approximately \$5,000.
- ✓ Rebate: \$30-\$40/unit



A front-load washing machine with a ENERGY STAR rating will get you a \$40 rebate, while a top-load will get you a \$30 rebate. Another reason to consider a front-load washing machine: it will use the least amount of water and extracts more of it during the final spin cycle, which equates to even more energy savings and LESS WORK for your dryer.

Considering an upgrade? Make sure to look at a washer and dryer combo. Replacing your electric dryer will score you another \$30 rebate (\$90 if you upgrade to a hybrid heat pump model).

**“DMEA made processing the rebates easy and it was definitely worth it. Not only did I receive the rebate from DMEA, but I have noticed the monthly energy savings too. I do recommend learning what product information you'll need to submit beforehand, so you don't toss a box or receipt too soon. Thanks DMEA!”**

**- Patricia Mosiman**

*Received rebates for LED lights, dishwasher, and refrigerator.*

Learn more about DMEA's rebate programs by visiting [www.dmea.com](http://www.dmea.com) and then click Efficiency and then Rebates. Statistics referenced in this article are from [energystar.gov](http://energystar.gov). Visit [energystar.gov](http://energystar.gov) to learn more about ENERGY STAR rated products.

## PLANT IN THE RIGHT PLACE

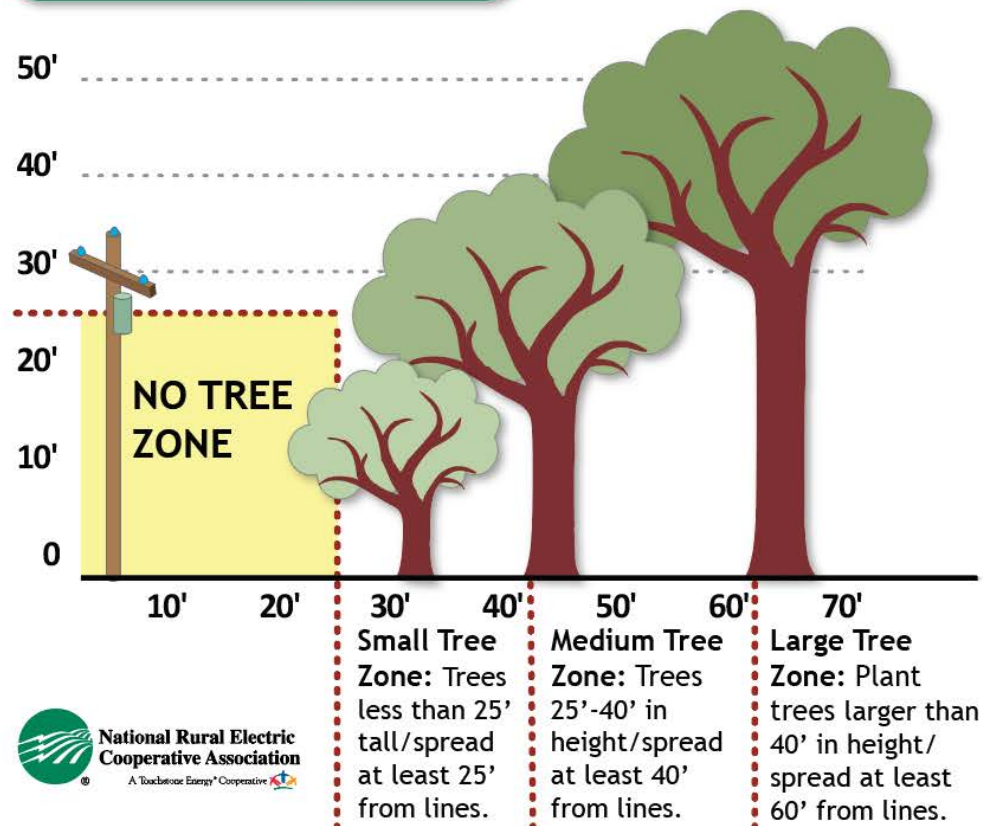
Keeping lines clear of trees and vegetation

Fall is a great time to plant trees, but only if you plant them in the right place. Before planting trees in your yard, think about how tall they may grow and how wide their branches may spread. A good rule-of-thumb to follow is 25 feet of ground-to-sky clearance, meaning that no trees, limbs, leaves or other vegetation should be within 25 feet of overhead power lines, from the ground up.

By making sure your trees are planted safely away from DMEA's power lines, you are helping us keep a safe and reliable supply of power (and Elevate internet too) flowing to your home or business. Thanks for keeping our power and fiber lines in mind when you plant.

Remember to keep Mother Earth in mind when you plant too. Check out CSU extension's Plant Select guide <http://plantselect.org/plants/find-a-plant/>.

## Tree Planting Guide



A Touchstone Energy® Cooperative

**Montrose Office**  
11925 6300 Road  
Montrose, CO 81401  
M - F; 8:00am-5:00pm

**Lead Office**  
21191 H 75 Road  
Delta, CO 81416  
M & W; 9:00am-4:00pm

**Contact Us:**  
1-877-687-3632 | [www.dmea.com](http://www.dmea.com) |

DMEA is an equal opportunity provider and employer. If you wish to file a Civil Rights program complaint of discrimination, complete the USDA Program Discrimination Complaint Form, found online at [http://www.ascr.usda.gov/complaint\\_filing\\_cust.html](http://www.ascr.usda.gov/complaint_filing_cust.html) or at any USDA office, or call (866) 632-9992 to request the form. You may also write a letter containing all of the information requested in the form. Send your completed complaint form or letter to us by mail at U.S. Department of Agriculture, Director, Office of Adjudication, 1400 Independence Avenue, S.W. Washington, D.C. 20250-9410, by fax (202) 690-7442 or email at [program.intake@usda.gov](mailto:program.intake@usda.gov).

## SMART HOME & ENERGY SAVINGS

with WiFi WeMo Crock-Pot



The internet has changed the way we search, connect and work, but cook? Yes, with the WiFi WeMo Crock-Pot you can now take control of your cooking from wherever you are.

Connect to the free WeMo app on your smartphone or tablet and adjust cook time, temperature, shift to warm, or turn off from your office or the store. The free WeMo app is available for Apple (iOS 7 and higher) and Android (4.0 and higher). The connected product solution delivers enhanced control, convenience, and peace of mind.

Besides being an internet connected product the WeMo Crock-Pot has three heat settings and has the classic oval shape to accommodate all sizes of dishes. It has a 6-quart capacity, cool-touch handles, and built-in cord storage. The oval stoneware is removable and dishwasher safe as well.

**Check it out on Amazon today:**  
Crock-Pot Wemo Smart Wifi-Enabled Slow Cooker, 6-Quart, Stainless Steel.

DMEA and Elevate Fiber, harnessing today's technology to help you manage your energy use.

### Recipes Info:

Submit recipes, including your name, address, and phone number to:

DMEA Newsletter  
PO Box 910  
Montrose, CO 81402

Or email your information to [communications@dmea.com](mailto:communications@dmea.com).

If your recipe is published, claim your prize by calling (970) 240-1273 within 60 days.



Hit the Brakes. Keep us Safe.

Orange cones, flashing lights, roadside flaggers, and warning signs can all indicate a work zone on the road ahead. Within these zones, DMEA and Elevate employees and contractors are often doing work to install or repair power and fiber lines. Workers in these situations might already be facing the hazards of dealing with high voltage, and they increase their risk when establishing a work zone in the roadway. No matter how big the work zone, it requires drivers to pay attention to avoid a crash.

**We're asking you to help us keep our workers safe by slowing down and paying attention while driving in work zones. Please remember to:**

- Never use a cell phone or text while driving.
- Stay alert. Expect the unexpected.
- Slow down.
- Don't tailgate.
- Pay attention to the signs.
- Obey the flaggers.
- Be patient and stay calm.
- Know the road rules for work zones.

Keeping a safe distance between your car and the construction workers and equipment, driving the posted work zone speed limit, and using your four-way flashers when stopping or traveling slowly can help reduce accidents in work zones. Your patience in work zones helps us safely repair our electric and fiber lines during outages or conduct necessary maintenance. It also saves lives.



### Ingredients:

- 2 lbs ground Elk
- 2 T plus 2 cups of water
- Salt and pepper
- ¾ t. baking soda
- 1 Anaheim pepper, stemmed, seeded, and torn into 1-inch pieces
- 1 ounce tortilla chips, crushed (¼ cup)
- 2 T ground cumin
- 1 T paprika
- 1 T garlic powder
- 1 T ground coriander
- 2 t. dried oregano
- ½ t. dried thyme
- 1 (14.5-oz) can whole peeled tomatoes
- 1 T vegetable oil
- 1 onion, chopped fine
- 3 garlic cloves, minced
- 1-2 t minced canned chipotle chiles in adobo sauce
- 1 (15 oz) can pinto beans
- 2 t. sugar
- 2 T cider vinegar
- Lime wedges
- Coarsely chopped cilantro
- Chopped red onion

### Directions:

Adjust oven rack to lower-middle position and heat oven to 275 degrees. Toss ground Elk with 2 T water, 1 1/2 t salt, and baking soda in bowl. Set aside for 20 min. Place Anaheim pepper in Dutch oven set over medium-high heat. Toast Anaheim, stirring frequently 4 to 6 min., reducing heat if pepper begins to smoke. Let cool and process. Add tortilla chips, cumin, paprika, garlic powder, coriander, oregano, thyme, and 2 t. pepper to food processor with Anaheim pepper and process until finely ground. Transfer mixture to bowl. Process tomatoes and their juice until smooth, about 30 seconds. Heat oil in now-empty pot over medium-high heat until shimmering. Add onion stirring occasionally, until softened. Add garlic and cook until fragrant. Add ground Elk and cook, stirring to break meat up into 1/4-inch pieces, until browned, and caramelized drippings begin to form on pot bottom, 12 to 14 min. Add Anaheim pepper mixture and Chipotle; cook, stirring frequently, until fragrant, 1 to 2 min. Add remaining 2 cups water, beans and their liquid, sugar, and tomato puree. Bring to boil, scraping bottom of pot to loosen any browned bits. Cover, transfer to oven, and cook until meat is tender and chili is slightly thickened, 1 1/2 to 2 hrs, stirring occasionally. Remove chili from oven and let stand, uncovered, for 10 min. Stir in any fat that has risen to top of chili, add vinegar and season with salt to taste. Serve, with lime wedges, cilantro, and chopped onion separately. (Make up to 3 days in advance.)