

THE PowerLines REPORT

1 |  DMEA Linemen

2 |  Tree Trimming

4 |  Tech Gadgets

April 2017

Hats Off to the Heart of the Co-op, Our Linemen



Jasen Bronec, CEO

Every year, we take the time to thank our extraordinary linemen who dedicate their lives to keeping the lights on in our local communities. Twenty-three linemen maintain 3,800 miles of line in DMEA's service territory, and without them, our world would be dark.

While we depend on our entire staff to keep DMEA running smoothly, on April 10, 2017, we honor our linemen

who often find themselves in dangerous, challenging and downright miserable situations, so our lives may be a little bit brighter and safer every day. These brave men repair damaged lines and maintain critical infrastructure for our communities. Without their hard work and commitment to the job, our co-op would not thrive. No matter the time—day or night, weekday or weekend—if the lights go out, so do they.

Perhaps you have seen them raising their bucket trucks in howling winds and torrential rains, or in freezing, icy conditions. They work around the clock near high-voltage power lines until electricity is restored to every member in our co-op community.

Our linemen are brave, committed, and critical to our success. This year, we hope you will join us in thanking the many them. Remember, your power works because they do!

Pictured from left to right: Marty Elliot, Cole Zunich, Chance Stevens



TELL THEM THANKS

Help us say thank you to the men who work to keep the lights on:

Mail it in – Send a thank you note to DMEA Lineman Appreciation, PO Box 910, Montrose, CO 81402. If you personally know one of our linemen include a note to them. We'll make sure your kind words reach the right person.

Get social – Post on your favorite social media channel using the hashtag #thankadMEALineman about why you appreciate they job they do. Or, visit DMEA's page (www.facebook.com/DeltaMontroseElectricAssociation) and post a photo or comment.

Keep learning – The best way to honor our linemen is to learn more about what they do. Bring your students for a field trip or invite us into your classroom to learn about electricity safety and the job of a lineman.



Trees and Power Lines Don't Mix

Although trees are an important part of our life, from shade to beauty to environmental health, they can affect the reliability of DMEA's power system and create a significant safety risk if limbs grow too close to our power lines. We know it's important to you and your family to receive safe and reliable power, so removing limbs and trees that can contact our power lines is a top priority.

Who trims my trees?

DMEA currently contracts with Asplundh Tree Expert Company to trim trees and vegetation growing up within the power line right-of-way. You've most likely seen Asplundh's bright orange bucket trucks and chippers around the community before. They maintain vegetation along all of DMEA's power lines, trimming limbs or removing trees and vegetation from lines and easements, and also removing hazard trees. All of which can pose a safety or reliability threat to our power system.

How do trees cause problems?

Trees that are planted in our power line rights-of-way and directly under the lines pose an obvious hazard. They are growing directly into the power lines and will eventually cause blinks or outages. But trees don't always have to be in the rights-of-way to be considered hazards. Trees planted outside of our rights-of-way that are growing toward the power lines and even dead trees that can fall into our lines are also targeted in our trimming program. The ultimate goal is to provide a buffer between our power lines and the trees or vegetation. This keeps our consumers and workers safe and serves as outage prevention.

How do you trim a tree?

Our goal is to trim trees on a minimum three-year cycle, meaning that once Asplundh trims a problem tree, it shouldn't need to be trimmed again for three years or more. That trim distance can vary dramatically from species to species and depending on the proximity to a water source, as well as the age, health, and location of the tree. This three-year cycle will help us maintain a regular trimming rotation and minimize or eliminate the number of problem trees.

In order to keep your trees healthy, we use a method developed by the National Arborist Association, which works to redirect a tree's growth pattern. Aptly termed directional pruning, it encourages growth away from power lines. Trees under power lines that have large "Vs" in them are directionally pruned. And while it may look a little funny, it's a win-win situation. The tree remains healthy and intact and the risk of that tree impacting our power lines is reduced.

What if you have a problem tree on your property?

Asplundh will trim trees they have identified as hazards even when the trees are located on private property. They will make every effort to connect with the property owner prior to trimming the tree. However, you may notice a tree on your property that is growing into the power lines before Asplundh has a chance to identify it. Never trim the tree yourself. Always contact DMEA, and we will coordinate with our tree contractor.



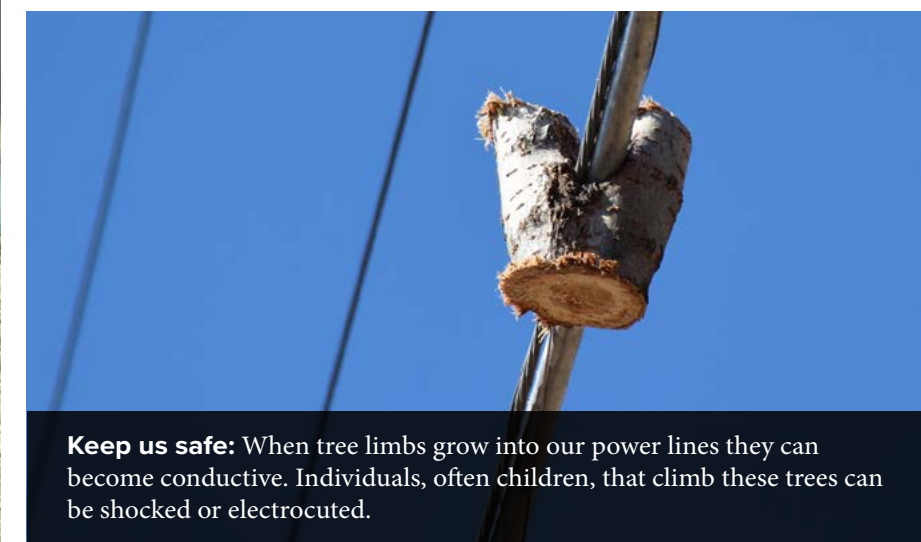
Wrong tree, wrong place: Trees that grow taller than 25 feet should never be planted within the power line right-of-way, especially directly under our lines. A good rule of thumb is to stay 25 feet from power lines.



Don't block the view: Trees, vegetation, and general landscaping items should never be planted or placed where they obstruct access to ground equipment. In general, keep a clear space of 10 feet on all sides of any DMEA equipment.



Leave it to the Pros: Never attempt to remove trees or vegetation touching the power lines yourself. Our tree trimming crews are equipped with insulated tools to keep them safe while working around high voltage.



Keep us safe: When tree limbs grow into our power lines they can become conductive. Individuals, often children, that climb these trees can be shocked or electrocuted.

What's new in technology gadgets?

ELEVATE

FIBER ► POWERED BY DMEA

The Consumer Electronics Show (CES) is always an exciting start to each year for tech enthusiasts. CES is an annual convention where vendors from around the world bring and present their newest gadgets to test receptiveness and excitement. Check out some of our favorite gadgets from the 2017 CES convention.

THE KURI

Who wouldn't love a robot that could help with household chores and play with the kids? The Kuri looks like it could do it all, but you better start saving for this cute robot now. Learn more at heykuri.com. Make sure to check out the "Kuri Doesn't" video.



LEGO BOOST

Yes, Lego is now on the technology radar. The new Lego Boost will bring life to Lego sets. Lego creations will now be able to walk, flash, make noise, and more. This exciting app is scheduled to be released in August. Check out the videos on YouTube or learn more about this gadget at lego.com/en-us/boost.



MOTIV RING

From Fitbits to the Apple Watch and more, the majority of people these days have heard of or are wearing a smart device on their wrist to track activity and help them live a healthy lifestyle. But, what if you would prefer something smaller? It is here. The new Motiv Ring can do it all and is water proof. Check it out at mymotiv.com.



SEVENHUGS SMART REMOTE

A universal remote is nothing new, but a total smart remote that actually lives up to its expectations certainly is. The new Sevenhugs smart remote took the CES award for "Best of Innovation" this year and is selling out of preorders quick. Check out the remote at remote.sevenhugs.com



The average home now has more than 7 devices connected to the home's WiFi network and all of these tech gadgets just add to that list. It is crucial these days to have a WiFi network that can handle multiple devices without buffering. Elevate can help create the best WiFi network for your home—backed by fiber and delivering speeds up to 1 Gig (1,000 Mbps)—our network is a smart device's dream come true. Preregister today for the fastest, most reliable internet connection at join.elevatefiber.com.



A Touchstone Energy® Cooperative

Montrose Office

11925 6300 Road
Montrose, CO 81401
M - F; 8:00am-5:00pm

Read Office

21191 H 75 Road
Delta, CO 81416
M & W; 9:00am-4:00pm

Contact Us:

1-877-687-3632 | www.dmea.com |

Your Board of Directors:

Bill Patterson, *District 1*
Brad Harding, *District 3*
Marshall Collins, *District 5*
Mark Eckhart, *District 7*
Tony Prendergast, *South*

Kyle Martinez, *District 2*
Jim Elder, *District 4*
Terry Brown, *District 6*
John Gavan, *North*

DMEA board meetings are open to all members and are generally held on the 4th Tuesday monthly, beginning at 3pm with the public comment period at 5pm. Call (970) 240-1212 to confirm specific dates, times, and locations.

Recipes Info:

Submit recipes, including your name, address, and phone number to:

DMEA Newsletter
PO Box 910
Montrose, CO 81402

Or email your information to communications@dmea.com.

If your recipe is published, claim your prize by calling (970) 240-1273 within 60 days.

SAVE THE DATE

Celebrate your cooperative membership and be sure to attend the 2017 Annual Meeting of Members

Thursday, June 15, 2017

Hotchkiss High School

4:30 – 8:00 PM

The fun begins at 4:30 PM with family activities, bucket truck rides, a free dinner, and demonstrations from Elevate Fiber. This year, we're focusing on economic development, so stay tuned for more information about pre-meeting seminars and our keynote speaker Diane Smith, a rural entrepreneur and author from Whitefish, Montana.

MAKE YOUR VOICE HEARD

Don't forget about our 2017 Board of Directors elections. District 6, District 7, and the North Region are up for election. You'll receive a mail-in ballot in late May. Return your ballot in the envelope provided. Be sure to drop it in the mail no later than June 8, 2017. If you don't vote by mail, you can also vote

in person at the Annual Meeting. Meet this year's board candidates at one of the forums listed below.

Tuesday, May 16

Cedaredge Town Hall / Centennial Room

140 NW 2nd St., Cedaredge, CO

6:00pm - 8:00pm

Thursday, May 18

DMEA Multipurpose Room

11925 6300 Rd., Montrose, CO

6:00pm - 8:00pm

THERE'S STILL TIME

Interested in becoming a candidate? There is still time to nominate yourself. Remember, you must live in District 6, District 7, or the North Region in order to run for this year's election. Pick up a self-nomination and petition packet at either DMEA office. Complete the packet, including providing at least 15 valid member signatures supporting your nomination, and return it by Monday, May 1.

Home COOKING

Banana Bread

Ingredients:

- 2 very ripe bananas, peeled and cut into 1-inch pieces
- 1/2 cup softened butter
- 3/4 cup sugar
- 2 large eggs
- 1/4 cup milk
- 2 tsp. lemon juice or white vinegar
- 1 tsp. baking soda
- 1/2 tsp salt
- 1 & 3/4 cup all purpose flour (for a healthier option, substitute 1/4 cup ground flax seed for 1/4 cup flour)

Directions:

Preheat oven to 350 degrees. Place bananas and butter in a mixing bowl and mix at medium speed until butter and bananas are well blended. Add remaining ingredients except flour and mix until well blended. Add flour (and flax seed) and mix on high speed till blended. Pour batter into a greased 9X5 bread pan and bake at 350 degrees for 45 to 55 minutes. Check loaf by inserting a butter knife into the center. The bread is done when the knife comes out clean.

For an added treat, make a topping of brown sugar, flour, cinnamon, and butter mixed until crumbly. Add topping to loaf before baking. Makes a nice sweet crunchy topping to the loaf.

- Craig Roberg, Montrose

