

Forty-four Years of Service on the Line

After almost 45 years, Roger McDaniel – a.k.a Rocky – hung up his climbing spurs for the last time on January 30, 2016. Rocky began his DMEA career at just 20 years old after serving in the National Guard. He started as an apprentice lineman and worked his way up through the operations department, serving as a journeyman lineman, line foreman, and lineman serviceman.

In the four decades he has been with DMEA he's seen a lot of changes, noting, "there's a different way of doing just about everything." However, even after cataloging all that has changed, Rocky smiles as he admits one thing has remained constant.

"The people we serve, our members; they are what keep the company going. We've always worked to do the best for them," said Rocky.

Rocky is humble when talking about his career with DMEA, but he can't hide his love for his job as he starts recalling memorable moments. Moreover, neither can his wife, Beth. The pair cannot help but tell stories about when "they" responded to outages. Because you see, cops consider themselves families, and Rocky and Beth truly embody that philosophy.

"I remember when I went on a "little outage" near Ridgway that turned into 72 hours," said Beth.

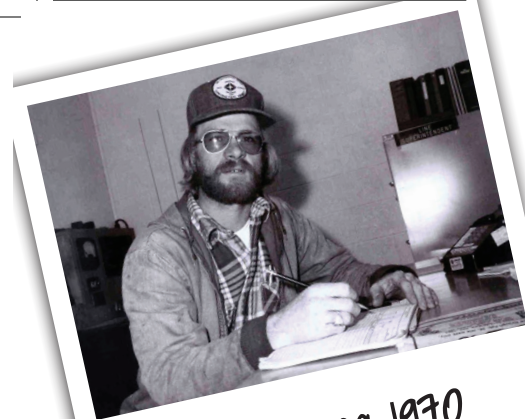
"I thought it was just going to be a small outage, so I asked her if she wanted to come along. She was eight months pregnant and ended up sleeping in the front seat," said Rocky.

"Finally, someone showed up with food, but they stayed around to work on the outage, so I was still stuck. That was the last outage call I went on," countered Beth.

What's next for Rocky and Beth? According to Rocky, they plan on "enjoying life." As avid geocachers, the couple hopes to break their previous record of 1,001 geocaches in one year. Geocaching is a current day treasure hunting game, where participants navigate to specific GPS coordinates to find a hidden geocache – a container holding a log sheet and sometimes trinkets.

"[Geocaching] gets you out. Since we started, we've been to places that we always knew were there, but had no reason to go. We get to explore," said Rocky.

The pair has even placed geocaches of their own, one of which is yet to be found. Hint: it's in Delta near the Safeway. Please join DMEA as we wish Rocky the best in his retirement. He and Beth will be missed as they take on their next great adventure.



Rocky circa 1970



The good life 2016



Home Cookin'

Chile Rellenos Squares

– Mike Youtzy, Cedaredge

Ingredients:

3 cups shredded monterey jack cheese
1 (4oz) can diced green chiles, drained
4 eggs, beaten

Directions:

Preheat oven to 350 degrees. Sprinkle cheese and chiles evenly into well-greased 8" square baking pan, pour eggs over the top. Bake at 350 degrees for 35 minutes.

Let stand 10 minutes before cutting into 1 1/4" squares. Serve warm

Yield: 3 dozen appetizers

THE PowerLines REPORT



1 | Understanding Your Energy Use



2 | Board Candidate Info



3 | Youth Leadership Representatives

March 2016

SmartHub Helps you Understand your Energy Use



Jasen Bronec, CEO

While the cold weather months bring our beloved powder, they also bring higher utility bills. If you're one of the many members who experienced an increase in your electricity bill over the past few months, know you are not alone. When temperatures dip, electric bills rise, even for those whose primary heating source isn't electricity.

One common misunderstanding we hear at DMEA is "I haven't changed my thermostat setting, but my bill still went up." Although you may not have turned your thermostat up, the difference between the temperature on the inside of your home and that of the air outside, makes your heating system equipment run longer and ultimately use more electricity. This is true even for gas furnaces, which require electricity to operate.

In the end, the reason our bills go up is because we're using more electricity. It can be hard to understand exactly what in your home is using electricity and when. If you're like me and experienced an increase on your last bill, a good place to start is by logging into your account via DMEA's SmartHub application. You'll find this on the home page of our website, www.dmea.com. Simply click on the "My Account" button.

SmartHub will break down your energy consumption by the month, day, and hour. This gives you the ability to see when you were consuming energy during the month and correlate it to your life. Did you have guests? What was the outside temperature? Did you plug in any electric appliances or equipment, like heat tape, diesel trucks, or space heaters? Little changes like these, coupled with extreme weather, can quickly affect the amount of energy you use and your bill.

Space heaters and heat tape are common culprits of spikes in winter energy bills. For instance, most standard heat tapes are six to nine watts per foot. If left on 24/7 for one month, just one six-watt, 100-foot heat tape will cost you approximately \$1.50 per day. That's an additional \$45 per month! SmartHub will help you better understand how you use energy and the impact items like heat tape can have on your bill.

Most importantly, I want to stress that DMEA is a member-owned cooperative. Our goal is to help you use energy as efficiently as possible. We have professional energy services staff members that can work with you to determine how you can save energy and lower your bill. If you're experiencing unusual increases in your bill, call us first so we can help you determine what may have happened and find solutions to lower your bill. The bottom line is we want to help: It's just how we do business.

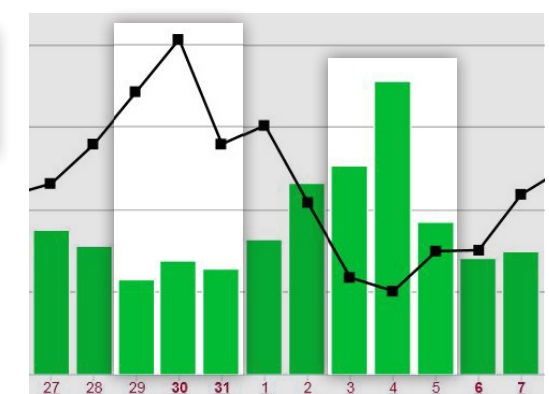


Daily kWh consumption



Average outside temperature

The graph to the right depicts a home's daily energy consumption compared to the average daily temperature. The highlighted areas show how weather may affect your bill. In this case, less energy was consumed when the temperature was warmer and more energy was consumed when the temperature dropped. But remember, the weather is just one factor that can affect your bill. To learn about your home's or business' energy consumption patterns login to SmartHub at www.dmea.com.



Locations:

Montrose Office
11925 6300 Road
Montrose, CO 81401
M - F; 8:00am-5:00pm

Read Office

21191 H 75 Road
Delta, CO 81416
M & W; 9:00am-4:00pm

Contact Us:

1-877-687-3632
www.dmea.com



Your Board of Directors:

Bill Patterson, *District 1*
Olen Lund, *District 3*
Marshall Collins, *District 5*
Mark Eckhart, *District 7*
Tony Prendergast, *South*

DMEA board meetings are open to all members and are generally held on the 4th Tuesday monthly, beginning at 3pm with the public comment period at 5pm. Call (970) 240-1212 to confirm specific dates, times, and locations.

Kyle Martinez, *District 2*
Jim Elder, *District 4*
Terry Brown, *District 6*
John Gavan, *North*

Recipes & Pop Quiz Info:

Submit pop quiz answers and recipes, including your name, address, and phone number to:
DMEA Newsletter
PO Box 910
Montrose, CO 81402
Or email your information to communications@dmea.com.

If your recipe is published or you are announced as a pop quiz winner, claim your prize by calling (970) 240-1273 within 60 days.

DMEA is an equal opportunity provider and employer. If you wish to file a Civil Rights program complaint of discrimination, complete the USDA Program Discrimination Complaint Form, found online at http://www.ascr.usda.gov/complaint_filing_cust.html or at any USDA office, or call (866) 632-9992 to request the form. You may also write a letter containing all of the information requested in the form. Send your completed complaint form or letter to us by mail at U.S. Department of Agriculture, Director, Office of Adjudication, 1400 Independence Avenue, S.W. Washington, D.C. 20250-9410, by fax (202) 690-7442 or email at program.intake@usda.gov.



Be a Voice for Your Cooperative | Serve as a DMEA Representative

DMEA is a member-owned and locally controlled rural electric cooperative. What does that mean? It means you, our members, own the cooperative, via your purchase of electric service, and are responsible for governing it through an elected board of directors. Each year, you are tasked with electing three representatives from the membership to serve on DMEA's Board of Directors. This year, the District 3, District 4, and South Region board seats are up for election.

Interested members who live within these three areas are encouraged to seek nomination. Board members govern the cooperative on the behalf of all members by setting strategic goals, rates, and cooperative policies. By serving on your co-op's board of directors, you truly act as a voice of the membership.

In order to become a candidate, you must complete the candidate nomination petition packet. The packet will be available beginning Monday, March 28 at DMEA's offices in Montrose and Read. The deadline to return your nomination petition packet is 4:00pm Monday, May 2, 2016.

SAVE THE
DATE

JUNE
16
ANNUAL
MEETING

How to Run for the Board of Directors?

- ★ Pick up your nomination petition from a DMEA office.
- ★ Get your petition signed by 15 or more registered members.
- ★ Return your petition to DMEA on or before May 2, 2016.
- ★ Vote: Return your mail-in ballot in May or vote in person at the Annual Meeting.
- ★ Election concludes June 16, 2016 at the DMEA Annual Meeting of Members.



2016 DMEA Board of Directors Elections

The following districts and/or regions are up for election in 2016.

District #3

The Northfork Valley, including Crawford, Hotchkiss, Paonia, Somerset, and the surrounding rural areas.

District #4

The rural areas north, east, and southeast of Montrose.

South Region

The southern half of DMEA's service territory from approximately halfway between Olathe and Delta to the southern territory boundary.

To confirm in which district/region you reside, call 1-877-687-3632.

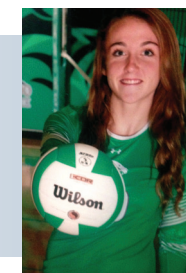
Local Students Selected to Attend Leadership Adventures

Four local high school students were selected to attend DMEA's summer youth leadership programs. The students were selected from a competitive pool of applicants and were required to complete a personal application form and write a 500-word essay. They were judged on their academic performance, extracurricular and community involvement, and the quality of their essay. Congratulations to the following students!



Briar Cary earned top honors and was selected to attend the Rural Electric Youth Tour in Washington, D.C. Cary is a Montrose High School sophomore with a GPA of 4.0. She is involved in tennis, band, marching band, color guard, winter guard, book club, and National Honor Society. Cary, along with almost 1,500 high school students from across the country, will tour the nation's capital and learn about the electric cooperative industry.

Emily Baier was selected to attend the Colorado Cooperative Youth Leadership Camp. She is a Delta High School junior with a GPA of 4.0. Baier is involved in volleyball, basketball, track, Women in Science and Engineering, Future Business Leaders of America, and ASTRA.



Cara Littlefield was selected to attend the Colorado Cooperative Youth Leadership Camp. She is a Hotchkiss High School junior with a GPA of 3.67. Littlefield is involved in choir, Valley Youth Orchestra, basketball team manager, and Paonia Players.

Grace White was selected to attend the Colorado Cooperative Youth Leadership Camp. She is a Montrose High School junior with a GPA of 3.536. White is involved in tennis, and ASTRA, and volunteers as a teacher's assistant in an ESL class.



Baier, Littlefield, and White will join students from Colorado, Wyoming, Oklahoma, and Kansas at the Cooperative Youth Leadership Camp for a week of hands-on leadership training in the mountains near Steamboat Springs.

For more information about DMEA's youth leadership programs visit www.dmea.com/content/youth-leadership-programs.

Stay Safe this Spring

After spending the long winter days inside, most folks love to get outside in spring, even if it's just to do chores. However, outdoor chores can bring electrical hazards. For example, according to recent data from the Consumer Product Safety Commission (CPSC), ladders contacting power lines cause 9 percent of electrocution-related deaths each year. Landscaping, gardening, and farming equipment cause another 7 percent. To avoid electrical hazards, make sure you and your family follow these simple tips:

- Never use ladders near overhead power lines.
- Do not attempt to trim trees that are near or have come into contact with power lines. Contact DMEA immediately and we will work with trained contractors who can safely trim or remove trees.
- Teach children to stay away from electric transformers and substations.
- Avoid damp conditions when using electricity. Keep all electrical devices and cords away from water.
- Place waterproof covers on all outdoor outlets.
- Install ground fault circuit interrupters (GFCIs) in outlets where water may be present.
- Only use extension cords marked for outdoor use and match the power needs of an electric tool or appliance to the cord's label information.
- Dial 8-1-1, the national "Call Before You Dig" phone number, at least 72 hours before engaging in any type of excavation work. Contractors will identify any underground lines on your property and mark them accordingly.
- Inspect power tools and appliances for frayed cords, broken plugs, and cracked or broken housing. Repair or replace damaged items.
- Unplug outdoor tools when not in use.
- Do not carry power tools by the cord.
- Never touch a person or an object that has made contact with a power line.

Visit www.dmea.com or safeelectricity.org for more electrical safety tips. Source: Electrical Safety Foundation International; CPSC



Busy Corner White Kitchen
Thursday, April 21, 2016
6:45am – 8:00am
318 Main St., Olathe

Munson Gallery
Friday, April 22, 2016
6:45am – 8:00am
260 W. Main St., Cedaredge

All DMEA members are invited. Spend a few minutes to ask us questions and tell us how we can better serve you. Or, just say hi before work. Coffee and pastries are on us! Event is free to attend. Come and go as you please. No RSVP needed. Questions? Becky, (970) 240-1263