

THE PowerLines REPORT



Rate Changes

2



Elevate Fiber

3



Operation RoundUP

November 2016

2017 Proposed Rate Changes



Jasen Bronec, CEO

Last month DMEA announced the need to increase rates with the New Year. DMEA will experience a 4.3% power cost increase from our wholesale provider, Tri-State. Simultaneously, we must also ensure that each rate class is paying their fair share of the costs associated with the delivery of their electric service.

As a not-for-profit electric cooperative, DMEA's rates are designed to recover the cost of doing business. The energy charge—the rate you pay per kilowatt hour—covers the costs of purchasing wholesale energy from Tri-State and the generation of local energy. The access fee, also known as the base charge, covers the cost operating the cooperative and delivering power to you. These are considered fixed costs or costs that DMEA would experience regardless of the number of kilowatt hours you use each month. Fixed costs include items such as system maintenance, bill processing, equipment and employee wages.

The proposed rates reflect our need to pass on Tri-State's increase and more accurately collect the amount of revenue needed from each rate class to cover the cooperative's fixed costs to serve each rate class. Overall, the changes amount to an approximate 3.61% increase. DMEA's Board of Directors will take comment on the following rates at their regularly scheduled November board meeting on November 15 at 3:00 p.m. They will also vote on the proposed rates at this time.

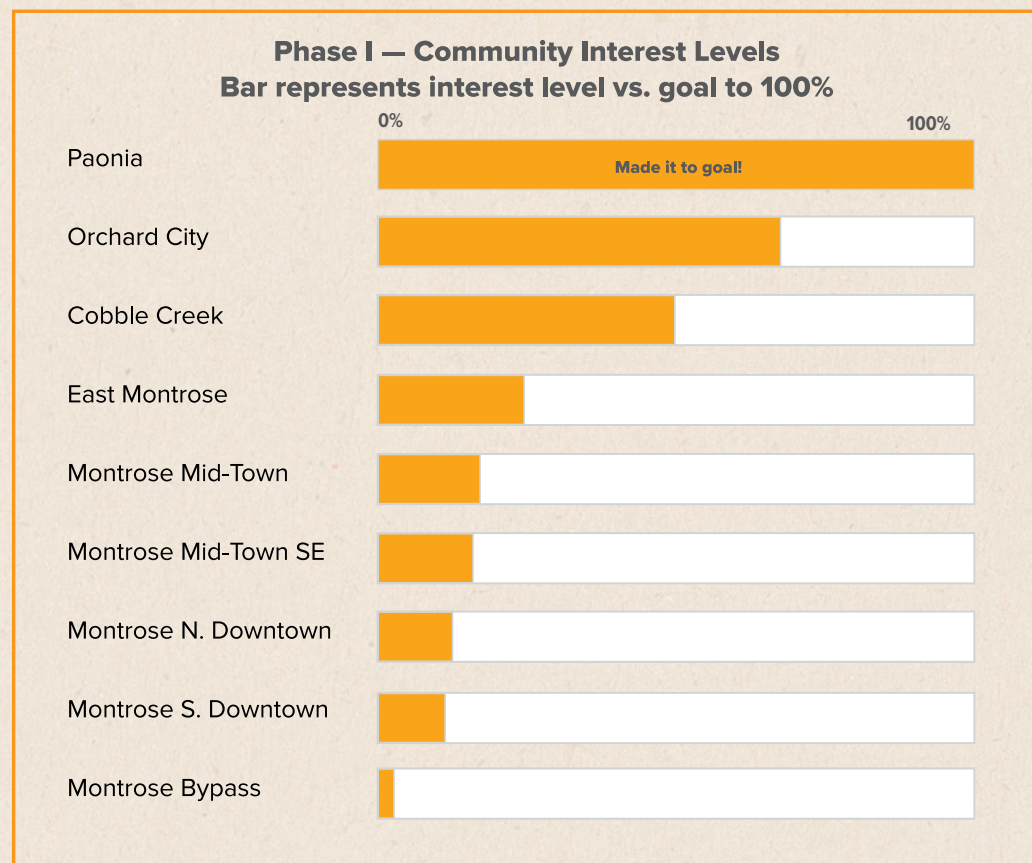
If you have questions about how these changes will affect your account, please contact DMEA's energy service team at 877-687-3632.

Rate Class	Charges on the Bill	Current Rate	Proposed Rate
Residential	Access Fee – Single Phase	\$25.00	\$27.50
	Access Fee – Three Phase	\$28.00	\$30.50
	Energy Charge	\$0.10320	\$0.10450
Optional Seasonal Time-of-Use <i>On-peak hours are Mon. - Sat., 6:30am - 11:00am, 5:30pm - 9:30pm</i>	Access Fee – Single Phase	\$25.00	\$27.50
	Access Fee – Three Phase	\$28.00	\$30.50
	On-Peak Energy Charge	\$0.11000	\$0.16300
	Off-Peak Energy	\$0.0800	\$0.06550
Yearly Time-of-Use <i>On-peak hours are Mon. - Sat., 12pm - 10pm</i>	Access Fee – Single Phase	\$25.00	\$27.50
	Access Fee – Three Phase	\$28.00	\$30.50
	On-Peak Energy Charge	\$0.10800	\$0.16280
	Off-Peak Energy Charge	\$0.08100	\$0.06550
COZ	Access Fee – Single Phase	\$25.00	\$27.50
	Monthly Allowance Energy Charge	\$0.09412	\$0.09410
	Tier 2 Energy Charge	\$0.10320	\$0.10450
Small Commercial	Access Fee – Single Phase	\$25.00	\$28.00
	Access Fee – Three Phase	\$35.00	\$38.00
	Energy Charge	\$0.10680	\$0.10850
Small Commercial Time-of-Use <i>On-peak hours are Mon. - Sat., 12pm - 10pm</i>	Access Fee – Single Phase	\$25.00	\$28.00
	Access Fee – Three Phase	\$35.00	\$38.00
	On-Peak Energy Charge	\$0.10800	\$0.16300
	Off-Peak Energy Charge	\$0.09000	\$0.06700
Large Commercial	Access Fee	\$140.00	\$140.00
	Energy Charge	\$0.07653	\$0.0590
	Member Demand Charge	\$5.15	\$12.15
Optional Large Commercial Seasonal	rate no longer available		
Large Commercial Coincidental Peak	Access Fee		\$140.00
	Energy Charge		\$0.04204
	Member Demand Charge		\$5.25
	Demand – TSGT Coincident Peak		\$19.34

Chart continued on page 3.

GET READY for Elevate Fiber.

3,000+ preregistered members and growing every day. Let's take a look at our communities who have shown the most interest.



Remember, even if you don't live in one of the areas listed, it is still important to preregister. The interest we collect from the website will help us determine our next phases and construction plan. So, preregister today and share it with your neighbors!

Are you ready for Elevate Fiber?

Our build is based on interest levels. To bring Elevate to your area sooner 1) preregister today at join.elevatefiber.com 2) send FREE postcards to your neighbors through the website system 3) spread the word—become an Elevate Champion and you will help take your community forward sooner.

Have questions? Check out all of our FAQ guides at www.dmea.com/content/elevate-fiber or stop by one of our offices to visit with our local, knowledgeable customer service representatives. Let's build our community together with Elevate Fiber.



join.elevatefiber.com /



Elevate Update.

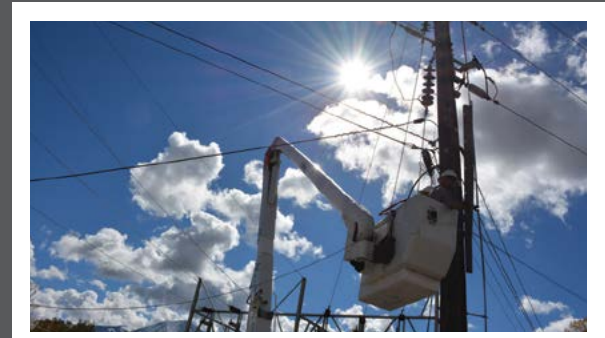
Construction and actual service installation began in Paonia during October—6 months earlier than expected. Huge thanks to all of our members. Without our member and community support this project would not be possible.

Make ready efforts, which include preparing poles for the fiber cable and installing underground conduit, have also begun in Orchard City and Cobble Creek. Follow our 'Updates' and 'Areas' pages at join.elevatefiber.com for weekly news and progress.

If you have not preregistered and live in Paonia, contact us directly to sign up for service. Call us at 877-687-3632 or stop by the Montrose or Read office. Don't miss the chance for super-fast internet and the low introductory \$100 installation fee—once we leave the area the installation fee doubles.



A fiber termination pedestal—big-city technology, country views.



Pulling fiber into the Paonia substation.

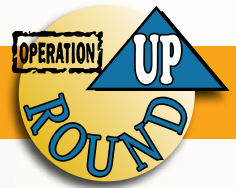


Directional boring and installing conduit for the underground fiber.

...Continued from page 1, Proposed 2017 Rate Changes

Rate Class	Charges on the Bill	Current Rate	Proposed Rate
Distribution 12kV	Access Fee	\$140.00	\$140.00
	Energy Charge	\$0.04034	\$0.04204
	Member Demand Charge	\$6.57	\$6.65
	Demand – TSGT Coincident Peak	\$18.76	\$19.34
Transmission 46kV & 115kV	Access Fee	\$140.00	\$140.00
	Energy Charge	\$0.04200	\$0.0440
	Member Demand Charge	\$2.65	\$2.65
	Demand – TSGT Coincident Peak	\$18.76	\$19.34
General Municipal Service	Access Fee – Single Phase	\$25.00	\$28.50
	Access Fee – Three Phase	\$35.00	\$38.00
	Energy Charge	\$0.11103	\$0.11300
Agriculture Small Irrigation	Access Fee	\$40.00	\$40.00
	Energy Charge	\$0.0800	\$0.08100
	Member Demand Charge	\$4.50	\$4.60
Agriculture Large Irrigation	Access Fee	\$40.00	\$40.00
	Energy Charge	\$0.08000	\$0.06570
	Member Demand Charge	\$7.90	\$13.00
Agriculture Small Irrigation Time-of-Use Member Demand measured Mon. - Sat., 12pm - 10pm excluding New Year's Day, Memorial Day, Independence Day, Labor Day, Thanksgiving Day, & Christmas Day.	Access Fee	\$40.00	\$40.00
	Energy Charge	\$0.06330	\$0.0650
	Member Demand Charge – Peak	\$14.50	\$14.75
Interconnected Generating Facilities	Access Fee	\$85.00	\$85.00
	Energy Charge	\$0.10150	\$0.10300
	Member Demand Charge	\$2.85	\$3.25
Local Generation – Community Solar Array	Energy Credits	-\$0.10320	-\$0.10450
COZ Loop	no changes		
Security Lighting	Mercury Vapor – 175W	\$14.48	\$14.99
	Mercury Vapor – 400W	\$27.49	\$28.45
	HP Sodium – 100W	\$11.63	\$12.04
	HP Sodium – 250W	\$20.64	\$21.36
Street Lighting	Mercury Vapor – 100W	\$11.80	\$12.21
	Mercury Vapor – 175W	\$16.51	\$17.09
	Mercury Vapor – 250W	\$22.26	\$23.04
	Mercury Vapor – 400W	\$31.29	\$32.39
	HP Sodium – 70W	\$10.93	\$11.31
	HP Sodium – 100W	\$13.27	\$13.73
	HP Sodium – 150W	\$16.46	\$17.04
	HP Sodium – 250W	\$23.50	\$24.32
	LED < 75W	\$6.64	\$6.87
LED > 75W	\$11.75	\$12.16	

How You Helped a Boy Bring Home His Dog



Like most six-year-old boys, Tristin Daguerre loves The Minions and Disney's Cars. His room is filled with stuffed animals, trucks, and an array of treasures from a recent trip to the Denver Aquarium. Pizza, grapes, and apples are some of his favorite foods. But, unlike most six-year-old boys, Tristin experiences the world through the scope of autism. He is highly sensitive to the world around him and has trouble understanding how to process the things he sees, hears, and feels.

"He doesn't process the world the same way as we do. He can't put things in perspective. It's sensory overload for him and people on the outside see it as "throwing a fit" when he is actually having a meltdown," explains Emilia Vallejos, Tristin's now adoptive mother.

When Tristin was a baby, he lived—or rather survived—his first few years in an unsafe environment. In May of 2013, he was finally removed from the home. Emilia left her life in Ohio and returned to Western Colorado to care for Tristin through Child Protective Services, which eventually led to adoption. In October of 2014, she was awarded full rights, but her work to rehabilitate Tristin didn't stop there.

"It was overwhelming at first when I got him. He didn't talk. You couldn't touch him unless he wanted to be touched. He didn't show any emotion like other kids. Only pointing and grunting," remembers Emilia.

First stop was the pediatrician's office to get a full evaluation of Tristin's developmental issues and then to Denver Children's Hospital for autism testing.

To help Tristin better navigate the world and keep him safe and calm him during meltdowns, Emilia purchased an autism service dog—a white German Shepherd named Tundra. Tundra is Tristin's rock. Tristin can be tethered to Tundra while in public places keeping him from wandering away, which is an autistic trait.

Trained by Canine Manners, a certified trainer from Grand Junction, Tundra can read Tristin's behaviors and know how

to respond. He will provide distractions during stressful moments or a full response to a meltdown.

"Tundra will sense Tristin's agitation, and depending on his needs, he may go as far as lying on top of him to apply pressure, as well as assisting in other areas," explains Emilia.

The pressure is calming and helps Tristin focus on something other than being overwhelmed. Service dogs, like Tundra, don't come cheap. The cost of the dog plus training can start at \$7,000. DMEA's Operation Round program was able to help by donating \$2,500 to the family.

"Tundra will make it easier and safer for basic living. I'm a single parent. It helps to have the service dog. Helps make me more comfortable. Helps keep Tristin safe," said Emilia.

Through regular therapies and the addition of Tundra, Tristin is slowly learning how to make his way in the world. Although his way will never follow the same path as that of an average person, he will do it—with the love of Emilia and the support of Tundra.



Give back, by signing up for Operation RoundUp today. Visit www.dmea.com/content/operation-roundup



A Touchstone Energy® Cooperative

Montrose Office

11925 6300 Road
Montrose, CO 81401
M - F; 8:00am-5:00pm

Read Office

21191 H 75 Road
Delta, CO 81416
M & W; 9:00am-4:00pm

Contact Us:

1-877-687-3632 | www.dmea.com |

Your Board of Directors:

Bill Patterson, *District 1*
Brad Harding, *District 3*
Marshall Collins, *District 5*
Mark Eckhart, *District 7*
Tony Prendergast, *South*

Kyle Martinez, *District 2*
Jim Elder, *District 4*
Terry Brown, *District 6*
John Gavan, *North*

DMEA board meetings are open to all members and are generally held on the 4th Tuesday monthly, beginning at 3pm with the public comment period at 5pm. Call (970) 240-1212 to confirm specific dates, times, and locations.

Recipes Info:

Submit recipes, including your name, address, and phone number to:

DMEA Newsletter
PO Box 910
Montrose, CO 81402

Or email your information to communications@dmea.com.

If your recipe is published, claim your prize by calling (970) 240-1273 within 60 days.