



1  Preventative Tree Trimming

2  Elevate Fiber

3  Youth & Community

September 2016

Trimming Future Problems with Vegetation Management



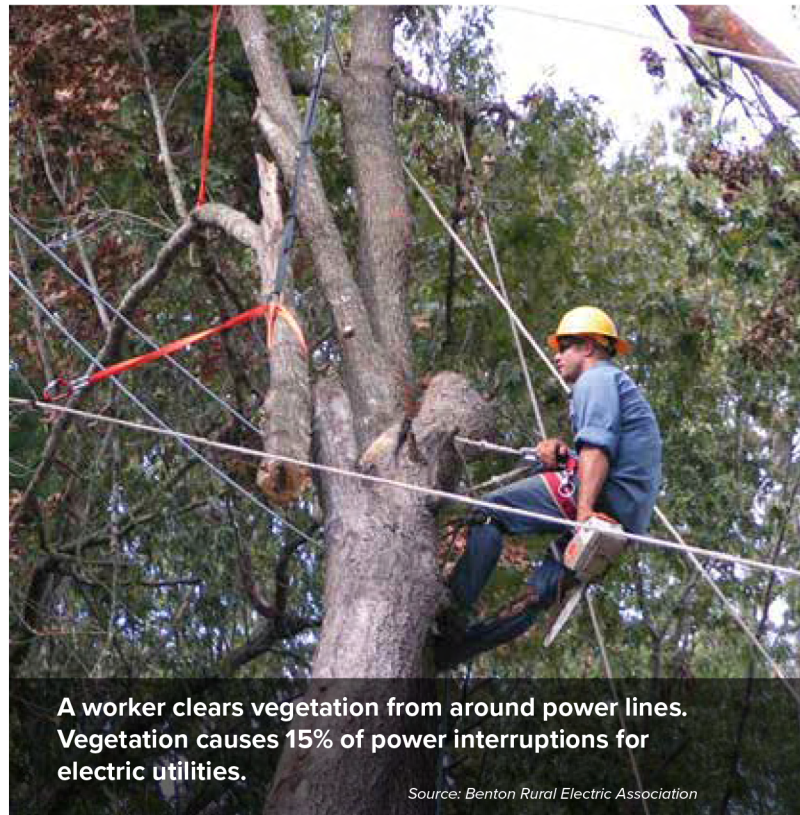
Jasen Bronec, CEO

Autumn brings some annual traditions at my home. At least one weekend, I drive with family and enjoy the vibrant fall colors. With only a few years of fall color drives under my belt, I'm still taking recommendations on where to go. If you have a favorite be sure to send it my way! Sometimes on these trips we'll spot some of our contractors working by the road, trimming tree branches growing too close to power lines.

I enjoy the beauty trees add to our region, especially at this time of year. But I also enjoy the comfort of knowing power will be available when I need it. At DMEA, we're committed to providing you with reliable power. There are some things we can't stop—high winds, mudslides, lightning—but we do what we can to prevent other outage culprits.

As you can probably guess, weather-related events cause the majority of power outages for electric cooperatives—a whopping 19 percent according to a survey by our national service organization, the National Rural Electric Cooperative Association. But vegetation, such as trees, shrubs, and brush growing too close to power lines and distribution equipment comes in a close second, causing 15 percent of power interruptions.

To cut back on potential tree-related problems, DMEA operates an aggressive vegetation management program. Most recently, we hired utility arborist, Mike Davison, to manage DMEA's vegetation management program. He'll be responsible for assessing trees and other vegetation in our rights-of-way and working with members when trees need to be trimmed or removed. He is also focused on educating the members on proper tree planting and the importance of right-of-way maintenance.



A worker clears vegetation from around power lines. Vegetation causes 15% of power interruptions for electric utilities.

Source: Benton Rural Electric Association

Additionally, our tree trimming contractors look for foliage growing under lines, overhanging branches, leaning trees, or "danger" trees that could pull down a power line if they fall, and trees that could grow into lines. It's a job that's never done. By the time crews finish trimming activities along our approximately 2,000 miles of overhead lines, vegetation has begun growing back at the starting point. That's why we're making changes to more aggressively remove trees and other vegetation growing within our power line and equipment rights-of-way.

Vegetation continued on page 4



DO MORE

with internet and voice from Elevate

Did you know that 1 Gig (1,000 Mbps) is 100 times faster than the national average? With the new fiber internet company in town, Elevate Fiber—powered by DMEA, 1 Gig internet could be headed to your community next.

1.

The first step to doing more is preregistering for service—visit join.elevatefiber.com, stop by a local DMEA office, or call us at 877-687-3632.

Preregistration goals have not been set for all areas. Preregister now to guarantee a \$100 installation fee (limited time offer) that will be required when service is installed. A 12-month contract with a minimum service level of \$49.95 per month is required. Elevate internet service is required for voice service.

Let's cover some of the basics:

I am not sure if my location is eligible to preregister? All locations are eligible to preregister. Areas with large interest for service will get fiber the soonest—member interest will drive the construction process. Paonia will be the first area, but yours could be next if enough interest is shown. Do not wait for us to knock on your door or for a community goal to be set. Preregister today at join.elevatefiber.com.

What will I have to pay when I preregister? There is no payment collected during preregistration. This process just allows you to complete a simple form to let us know what services your home or business is interested in. By preregistering now though you guarantee a \$100 installation fee, when the time comes. This fee includes all wiring and a powerful WiFi router. Before construction begins in your area we will contact you to complete the sign up process and to collect the installation fee. Having trouble preregistering online? Give us a call at 877-687-3632 or stop by one of our local DMEA offices during regular business hours.

What services can I get? Elevate Fiber is bringing internet with speeds up to 1 Gig (1,000 Mbps)—that is 100 times faster than the national average. We have two internet plans, 100 Mbps and 1 Gig, available for residential homes or businesses. We also plan to launch an affordable voice service. This will work just like your standard telephone service but will include unlimited local and long distance calling, plus tons of features. Also, when you preregister you can express your interest in video service. We are researching a local video (TV) solution that would bring local channels and streaming options at an affordable price over your fiber connection.

ELEVATE
FIBER ▶ POWERED BY DMEA

877-687-3632 » join.elevatefiber.com / 

Taking Time for Teens

EMPLOYEE SPOTLIGHT: LARRY DONATHAN

Larry Donathan spends his days troubleshooting issues with electric meters and managing substation networks. In layman's terms, he helps keep the lights on. And while he loves his job, his true passion is mentoring the local youth in his community.

Larry is actively involved in Delta Lions Club and All American Families. But his face lights up most when talking about Delta County Young Life, a non-denominational youth outreach program that provides a safe and positive environment for Delta area teens.

“Young Life is a safe place where kids can go and just hang out. It's controlled chaos, where we get to have fun, talk about life, and build relationships,” explains Larry.

Larry has been actively involved with youth programs including leading youth groups in the Delta area for more than 15 years, but Young Life has grown to be his passion. He has been involved with Young Life from its inception seven years ago when his friend and former mentee, Ty Gallenbeck, asked him to help out.

“I didn't realize I would enjoy it as much as I do. It's the kids; the conversations; the relationships you get to develop with the teenagers that continue even after they graduate and move away,” said Larry.

In his seven years with Young Life, Larry has mentored hundreds of Delta County teens. He admits you don't always know when you've made an important connection. But one such connection still stands out today.

“A young man who had participated in Young Life in high school called me up out of the blue one evening. He was out of state in the military,” describes Larry.



Larry and fellow adult Young Life volunteers have fun dressing up for the photo booth club night at a Delta County Young Life.



The Delta County Young Life crew poses for a group photo at summer camp in Arizona.



Larry celebrates with a group of Delta County Young Life participants after a paint dance party.

The man was in crisis mode and reached out to Larry because he needed someone to talk to. Larry did what he does best: he listened and helped connect the young man with another Young Life volunteer who was living just 40 minutes from the military base.

“I didn't realize that I had really even made a connection with the boy during Young Life. We hadn't been particularly close, but I was the only person he called that night. It really showed me that building those relationships with the teens makes a difference,” said Larry.

As with all service organizations, Young Life is funded by the generosity of local community members. The Delta division is struggling with funds and its future is unsure.

“I don't know what we'll do. Without Young Life it will leave a huge void in our community. The majority of the teens who participate aren't involved in another youth organization. If we're not there for them, they have nothing,” stressed Larry.

No matter what role Larry plays, be it at DMEA or in the community, he is committed to improving lives.

LEARN MORE OR DONATE TO DELTA COUNTY YOUNG LIFE:
www.facebook.com/DCYoungLife
giving.younglife.org/Views/dp/donate/controller.cfm

Mini Crescent Sliders

Joan Borrowman
Cedaredge

Home Cookin'

Ingredients:

- 1 lb ground beef
- 1 cup shredded cheddar
- 1 envelope onion soup mix
- 3 tubes refrigerated crescent rolls

Directions:

Cook ground beef over medium heat, drain. Stir in cheese & onion soup mix. Set aside. You may adjust the amount of onion soup mix to your preference, depending on taste.

Separate crescent dough into triangles; place one tablespoon of beef mixture along the wide end of each triangle. Roll up; place pointed side down 2 inches apart on ungreased baking sheet. Bake at 375 degrees for 15 minute, or until golden brown. Yield 4 dozen.

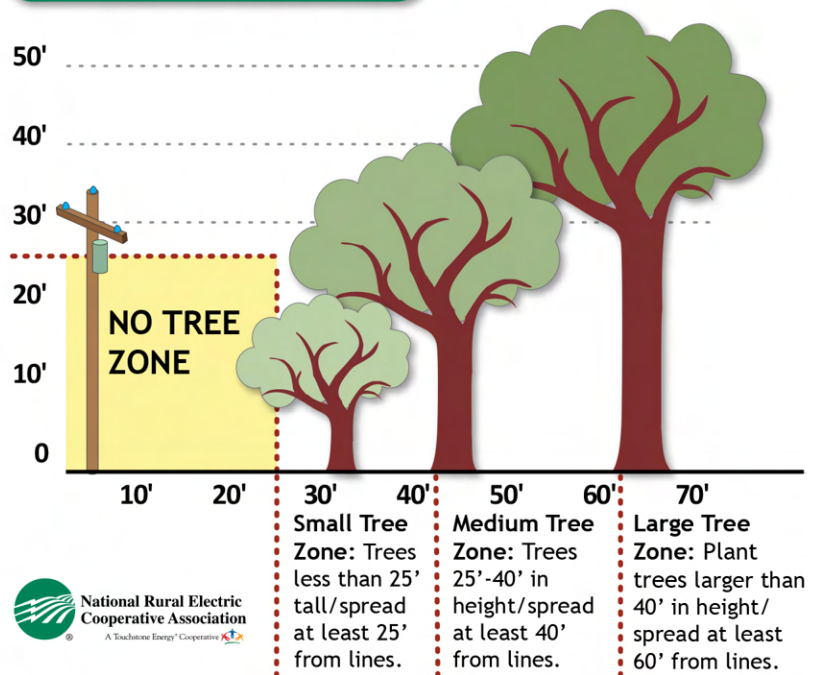
MAKES GREAT APPETIZERS!

Vegetation Management

continued from page 1

In working to keep a safe, reliable, and affordable supply of power flowing to your home or business, we need your help and cooperation. Let us know if you notice trees or branches that might pose a risk to our power lines. Even more important, before planting trees in your yard, think about how tall they may grow and how wide their branches may spread. As a rule of thumb, 25 feet of ground-to-sky clearance should be available on each side of our utility poles to give power lines plenty of space. Choose tree varieties with care and plant with power lines in mind.

Tree Planting Guide



National Rural Electric
Cooperative Association
A Touchstone Energy Cooperative

TELL US WHAT YOU THINK!

DMEA is conducting random customer satisfaction phone surveys throughout the year. We appreciate your help in completing these surveys, as they will help us better serve you in the future.

Thank you for participating!

Thanks for your help as we work together to keep electricity reliable. To report trees you think may pose a problem, call 1-877-687-3632. To find out more about proper tree planting, visit www.arborday.org.



The DMEA PowerLines Report is printed on paper that has 10% post consumer waste and is Forest Stewardship Council and Sustainable Forestry Initiative Certified.



A Touchstone Energy® Cooperative

Montrose Office

11925 6300 Road
Montrose, CO 81401
M - F; 8:00am-5:00pm

Read Office

21191 H 75 Road
Delta, CO 81416
M & W; 9:00am-4:00pm

Contact Us:

1-877-687-3632 | www.dmea.com |

Your Board of Directors:

Bill Patterson, *District 1*
Brad Harding, *District 3*
Marshall Collins, *District 5*
Mark Eckhart, *District 7*
Tony Prendergast, *South*

Kyle Martinez, *District 2*
Jim Elder, *District 4*
Terry Brown, *District 6*
John Gavan, *North*

DMEA board meetings are open to all members and are generally held on the 4th Tuesday monthly, beginning at 3pm with the public comment period at 5pm. Call (970) 240-1212 to confirm specific dates, times, and locations.

Recipes Info:

Submit recipes, including your name, address, and phone number to:

DMEA Newsletter
PO Box 910
Montrose, CO 81402

Or email your information to communications@dmea.com.

If your recipe is published, claim your prize by calling (970) 240-1273 within 60 days.