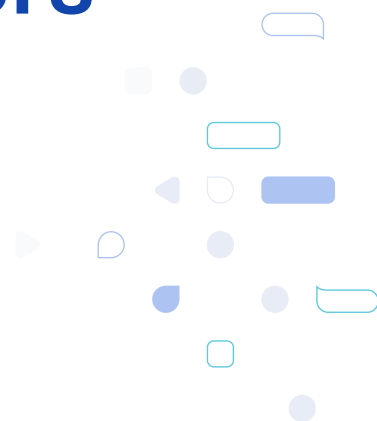




Recollective for Independent Researchers

Discover how independent researchers use Recollective to run online qual studies, reduce time and achieve better engagement - all while saving money.



“Overall, I have been very happy with Recollective and I have had very positive comments from clients who have used the tool. We have used it to validate strategies and HR initiatives and it has worked very well to gain employee feedback on concepts and prioritize different options.”

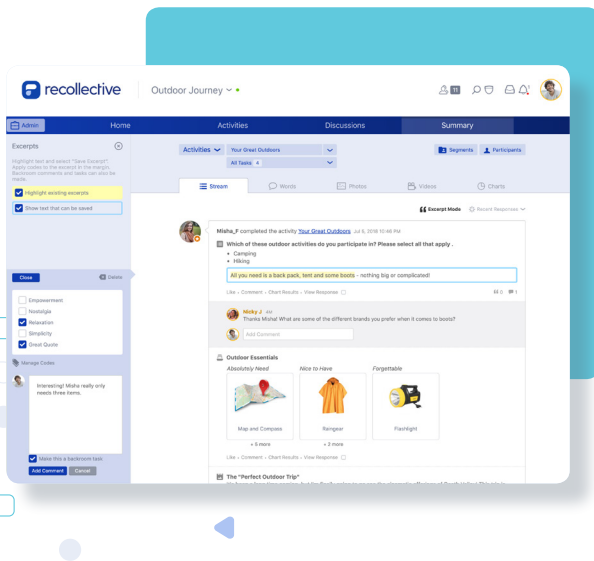
Christi S.

Time, cost and quality.

As an independent researcher, you can do a lot for your clients, but may not have the resources to do everything yourself. In this article, discover how Recollective and our Research Services can serve as an extension of your team to help you do even more for your clients.

The summary article describes some of the suite of time saving platform tools and our range of support offerings that you can take advantage of at any point throughout the research process.





Save Time

70% of Recollective projects are in and out of field in less than one week.

Conducting research online with Recollective saves time at every stage of your project. Get a project up and running in under 24 hours, view results in real-time and start analyzing your data immediately.

Automatically-generated charts, interactive world clouds, coded verbatims and video excerpts help you quickly spot themes, provide meaningful topline summaries to end clients and inform further enquiries.

Better Engagement

Average response rates exceed 80% for short-term research projects using Recollective.

Recollective lets you choose from standard and journaling activities with 13 different task types to engage participants in meaningful exercises. Leverage forum-style discussions and live chats to foster collaboration and socialized feedback to meet your client's specific needs.

Supplement qualitative tasks such as text, photo and video capture, image and video reviews with a range of quantitative options including polls, scales, allocation scales, grids and sorting exercises.



Part Of Your Team

As a smaller research firm or independent researcher, we understand the tight budgets and delivery pressure you face.

When you choose Recollective, you'll get all the support you need to delight your clients. So whether you have a specific question, require assistance programming or need recruitment info - we're in this together!

Access our knowledge base and support options from your Recollective site directly. Attend free training and daily Q&A webinars to hone your skills or let our services team help out with things like guide programming, recruitment quotes and participant uploads.



Certification Program

Grow your business by completing the Recollective certification program.

This hands-on course provides both training and practical experience in programming research on Recollective. At each stage you'll receive customized feedback and support from our Research Services team.

On successful completion, you'll become eligible to join our preferred partner network of research professionals and be promoted to end clients seeking a partner matching your profile for their next Recollective project! You'll also receive permission to display the Recollective Certified badge on your website and marketing collateral.



Frequently Asked Questions

Are there long term costs?

No. You can buy a license for a single project, or other any duration you need with any number of participants.

How long does it take to get started?

Recollective can activate a site on the same or next business day. Training takes 1 - 3 hours and programming guides depends on study complexity and length but can often be done in one or two days.

How can you help with my guide?

Consult with our services team to optimize your research guide. With exposure to hundreds of examples, we can help provide creative and engaging options.

How do I get my participants into Recollective?

We have multiple onboarding options including SSO and bulk importing but can also do this for you.

What languages are supported?

20 languages including English, French, Spanish, Portuguese, German, Dutch, Italian, Swedish, Polish, Romanian, Hungarian, Russian, Turkish, Japanese, Chinese, Korean, Arabic and Hebrew.

What if something goes wrong?

Reach out to our friendly support staff directly from your site. Our responsive team can help to answer your question, provide platform resources and more.

Flexible Pricing!

For around \$500 USD you can host a three-day quick study for your clients with urgent needs.

Recollective can extend for any duration of project and scale to accommodate anywhere from 10 participants up to 10,000. Increasing discounts are built into our pricing for larger projects and all licenses come with everything you need to be successful - unlimited activities, unlimited admin and client accounts, all features activated plus support, training and a pre-launch site check.



Contact Us

North America: +1 (888) 932 2299 x237

International: +1 613 230 3808 x237

Email: sales@recollective.com

Or swing by for a coffee at:

283 Boulevard Alexandre-Taché, Suite F3050

Gatineau, QC, J9A 1L8

Canada.

About Us

Recollective is an award-winning software developer focused on marketing research and online communities. For over 20 years, we've worked with some of the world's largest and most ambitious organizations, continuously innovating our software and services as their requirements evolve. The result is a proven software platform that businesses depend on to meet their most critical needs—quickly, easily, securely and affordably.