

[News](#) [Sport](#) [Money](#) [Business](#) [Opinion](#) [Israel](#) [Ukraine](#) [Royals](#) [Life](#) [Style](#) [Travel](#) [View gallery](#)

Hôtel Cabane

Paris, France

[View on a map](#)

8_{/10}

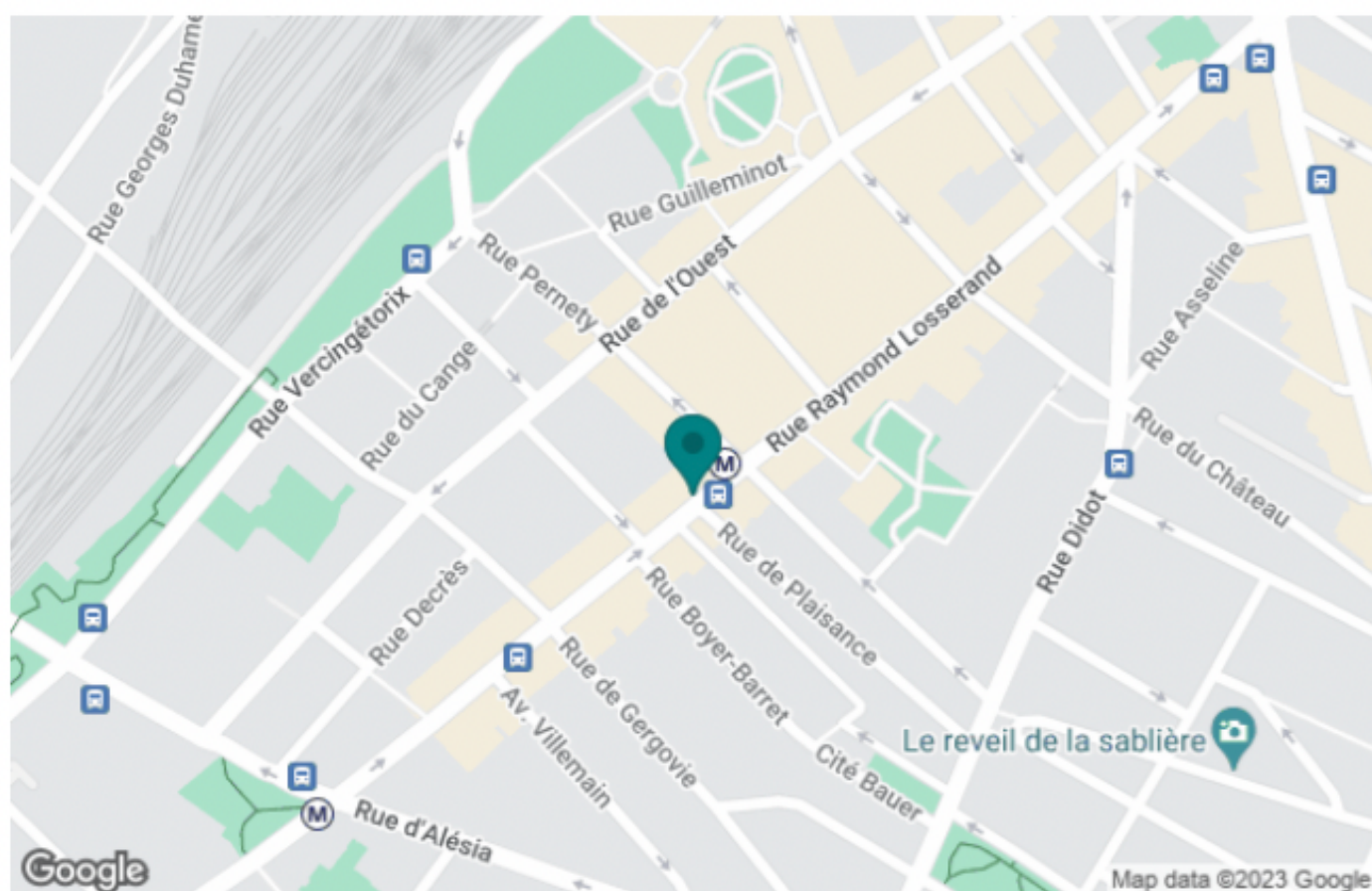
Telegraph expert
rating

" There's a delightfully Parisian sense of home at this mid-range Montparnasse hotel, which welcomes guests with homemade cake and herbal tea. Rooms charm with their potted plants and parquet floors, but the star feature is the hidden walled garden. Here you'll find a picture-book wooden cabin suite, which offers leafy views from its king-sized bed. "

Location

This mid-range hotel is set in the 14th arrondissement on a quintessential Parisian street, lined with neighbourhood cafés and food shops. Rue des Thermopyles – one of the city’s most Instagrammable lanes, particularly in spring when a jungle of ivy and wisteria clamber up house façades – is opposite.

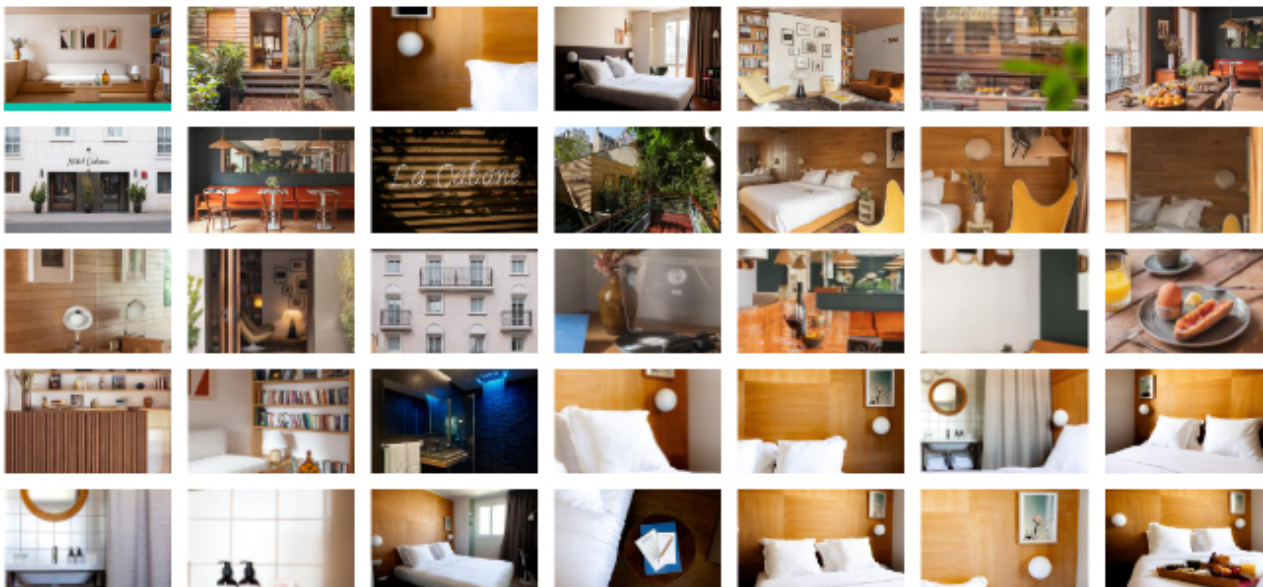
The heavily touristed Catacombs, Montparnasse cemetery and unsung art museum Musée Bourdelle (where Rodin's pupil Antoine Bourdelle lived and sculpted) are 20 minutes on foot, while the Jardin du Luxembourg is a further 10. The metro station Pernety (line 13) is next door to the hotel. Change at Denfert-Rochereau (four stops away) for the speedy RER B to Gare du Nord and Charles de Gaulle Airport.



Tranquillity and home comforts are the USP of this design hotel, one of several excellent-value hotels in the independent Parisian hotel group Orso. Its star feature is the leafy walled garden. However, the graceful interiors, spun from mid-century design icons including a Bertolia wire side chair and a tan leather rendition of Michel Ducaroy's 1973 Togo Canape, are equally cocooning after a busy day in the French capital. Cacti in terracotta pots and a turntable with a vinyl collection enhance the subtle 1970s spirit.



1 of 35



Service and Facilities

Upon arrival at the hotel, guests are welcomed with homemade cake (apple and cinnamon, cherry, lemon – all delicious) and herbal tea, and the generous hospitality doesn't lapse. The friendly reception staff are a mine of information when it comes to favourite drinking and dining spots – of which there are plenty in the neighbourhood.

The lobby lounge, with its pale-wood parquet and ceiling, is an appealing spot to linger over a glass of wine by bookshelves stacked with art books and traditional board games. Alternatively, there's always the garden.



Rooms

Potted plants and a natural palette of green, ochre, chocolate, buttermilk and tangerine creates a rich, earthy vibe in the 43 rooms. Most overlook the street – light sleepers will prefer a garden-facing room. Sleek open-plan bathrooms with glass walls (the toilets are separately enclosed) sport rain showers and full-sized Colomba body care products, fragranced with fig and wild fennel. Kudos for the wooden key card, in-room mineral water in glass bottles and compostable coffee capsules by Parisian roaster Lomi.

The pièce de résistance is the Cabane: a glass-fronted wooden cabin that is accessed from the bar via a wood and steel walkway. It offers leafy views from its king-sized bed and enjoys the same bathroom and amenities as the other rooms. Plus, it has the romance of its own mini woodchip garden with a bird box and lounge chairs. Two recently renovated basement doubles in the main building also enjoy their own tiny jardin.

Food and Drink

A buffet-style continental breakfast is served in the lounge bar, which has marble-topped bistro tables and fire-orange banquette seating. Crusty baguettes and croissants come from the local boulangerie and artisan jams, Isigny churned butter, farm yoghurts and cheeses are sourced from small producers. There's always a slice of homemade loaf cake going at reception and the bar serves drinks 24/7.

The hotel doesn't offer lunch or dinner. Reserve a table at nearby Le Layon to savour French fusion cuisine in a stylish 1950s-inspired bistro interior or at the artsy cultural centre L'Entrepôt to eat and drink in a clandestine conservatory garden.

Value for Money

Double rooms from €149 (£131) in low season; and from €299 (£262) in high. Breakfast is excluded and costs €15 (£13).

Access for guests with disabilities?

The Cabane is the only room adapted for wheelchair access.

Family-Friendly?

Not suitable.

📍 76 Rue Raymond Losserand, 75014 Paris, France.

00 33 1 4052 1240

hotelcabane.com