

TERMS OF DELIVERY



Anders Beton uses the INCOTERMS® 2020 (International Commercial Terms) for all deliveries. The INCOTERMS® 2020 are an international standard on the rights and obligations of the buyer and seller in the international transportation of goods, developed and published by the International Chamber of Commerce.

Visit www.iccwbo.org for more information

Our quotes and sales order confirmations will include the INCOTERMS® 2020 applicable to delivery. The following INCOTERMS® 2020 are used by Anders Beton:

- FCA Free Carrier Grobeton NV, Industrieweg 24, B-2280
- FCA Free Carrier Van der Velden Beton NV, Meerseweg 135 A, B-2321 Meer
- DAP Delivered At Place – delivery address of the customer
- DPU Delivered At Place Unloaded – delivery address of the customer
- CFR Cost And Freight – Port of destination

For freight transport it is necessary that the truck is fully accessible on both long sides for loading with forklifts. It must be possible to load on a flat surface.

With container transport, it is necessary that the container can be placed on the company site using so-called “Side loaders” so that we can load the goods with a forklift.

If Anders Beton takes on the cargo securing, this will be stated on the sales order confirmation and these costs will be charged.

CONTROL OF THE GOODS

The goods must be inspected on site in accordance with the INCOTERMS® 2020 included on the sales order confirmation.

We recommend taking enough photos before and after unloading. In the case of remarks, please note them on the consignment note and communicate the remarks together with the photos to Anders Beton as soon as possible.



BRIEF PROCESSING CONDITIONS

Our Delivery and Processing Conditions can be found on our website www.andersbeton.com.

1. Tip: take enough photos before and after unloading

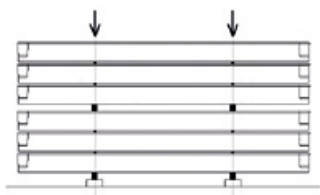
2. Provide a suitable place for unloading

- Provide a load-bearing, horizontal and flat surface.
- Support beams have to be provided by the customer.
- Place the support beams perpendicularly to and parallel to the wood between the slats

3. Points of attention when unloading



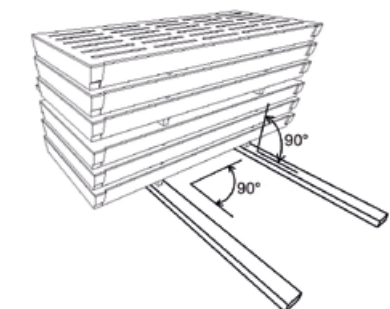
Wood in 1 line above each other. Replace the wood between the piles correctly.



Do not stack higher than on the truck or container.

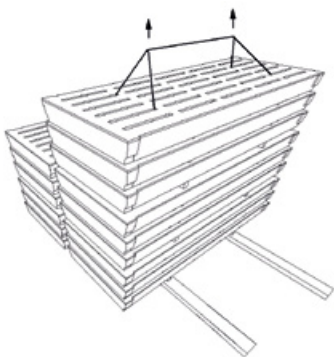


Max. 5cm between the forks of the forklift truck and the wood. Lift max. 1 pile at a time with forks.

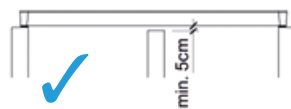




4. Points of attention when placing



Place the products one by one with approved lifting equipment.



Place the ends in the mortar.
Do not clamp the ends.



The slats can only be supported on the ends.

5. Load capacity of the goods

Placing is allowed immediately, loading only 28 days after the production date (see production sticker).



Don't drive on walkable elements. Only drive on driveable elements with pneumatic tires and axle loads according to load class.

GENERAL PROCESSING CONDITIONS

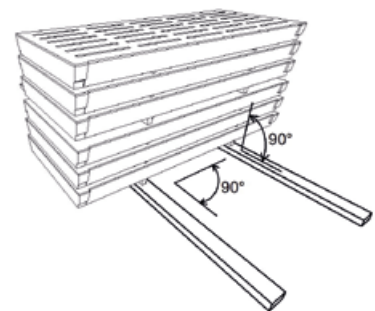
TEMPORARY STORAGE

Location for unloading

Organize the unloading location so that the goods can be placed directly from this location with a construction crane. In this way it is avoided that goods have to be moved on the construction site with vehicles. For safety reasons do not allow unauthorized persons to the unloading location.

Load-bearing surface / Support beams

Our goods are always temporarily stored at the customer location. This storage location must be provided with a sufficiently stable, horizontal and flat surface. The goods must always be unloaded on 2 beams supporting beams where the goods do not touch the ground. These beams are foreseen by the customer and must be placed perpendicular to the stacking wood between the stacked goods.



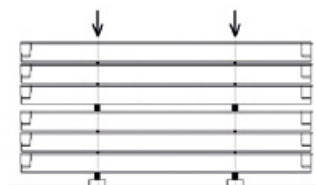
UNLOADING THE GOODS

The following conditions must be followed to prevent damage:

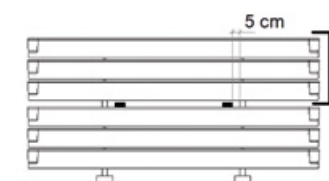
Lift the goods carefully and avoid sudden movements. Never stack the goods at the unloading location higher than the height at which they are stacked for transport (on the truck or container). When unloading, place stacking wood between each stack. Place this stacking wood perpendicularly below / above the stacking wood that is already between the stacked goods. Do not let the stacking wood stick out from between the goods. The unloading tool must be provided with protective rubber strips that are suitable for the application. When using forks (e.g. a forklift or pallet hook), the forks should be placed as close as possible to the inside of the stacking wood with a maximum distance of 5 cm between the forks and the wood. The forks should not lift more than one stack at a time. A stack is a collection of one or more goods that are separated by thicker stacking wood. Thicker stacking wood means beams, which have minimum cross section dimensions of 50 x 50 mm, in contrast to the other stacking wood, which has maximum cross section dimensions of 40 x 25 mm.



Wood in 1 line above each other. Replace the wood between the piles correctly.



Do not stack higher than on the truck or container.

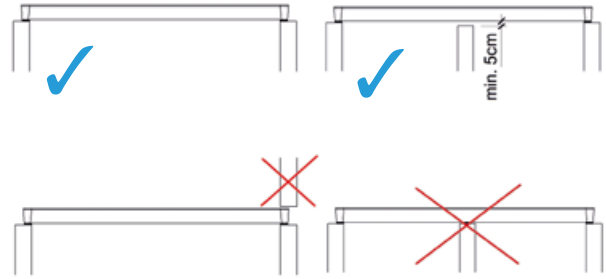
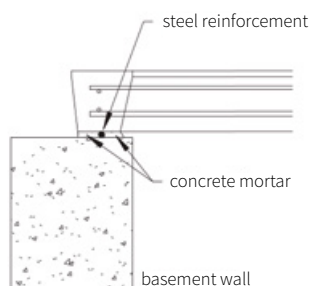


Max. 5cm between the forks of the forklift truck and the wood. Lift max. 1 pile at a time with forks.

PLACEMENT

The goods must be placed accurately and professionally.

- The goods must be placed with approved hoisting equipment for your own safety and that of the construction personnel. Under no circumstances should people come under the goods or in close proximity of the turning circles of the goods.
- The goods must be lifted element by element from the stack and placed accordingly.
- The goods must lie in a flat field after installation.
- The goods are only placed on both ends (on a basement wall, for example). Deviations from this, such as additional intermediate supports or laying on a gravel bed, are specifically stated on the sales order confirmation.
- The goods must be imposed freely. In other words, they should not be clamped by for example an overlying wall.
- The prescribed minimum length of the support must be respected at both ends. The minimum support for our concrete products is standard 100 mm. Some deviations apply:
 - Minimum support of 70 mm instead of 100 mm applies for:
 - > Pig slats with load class B3 that are used for fattening pigs (load class B2) and this up to a maximum length of 350 cm
 - > T-Floors type 503.245BL and type 507.245BL
 - Minimum support 125 mm instead of 100 mm applies for:
 - > Ventilation slats type 670,000, 671,000, 672,000 and 673,000
 - > Ventilation slats type 680,000, 681,000, 682,000 and 683,000
 - Other deviations are described in the specific processing conditions (e.g. for beams) or by a special mention on the sales order confirmation
- If the basement is made with poured concrete walls or concrete stones, the goods must be placed in a mortar bed. The tolerances of the goods and any unevenness of the concrete walls must be absorbed by the mortar bed. The NEN 1010: 2015 - Electrical installations for low voltage prescribes an additional protective adjustment. This can be done by placing a continuous reinforcement bar or steel wire (preferably diameter 10 mm) in the mortar bed.



- If the basement is made with completely flat precast concrete walls, the goods can also be placed on rubber strips that are suitable for the application and have a minimum thickness of 5 mm.
 - Article RUB2000: For goods with a requirement of 100 mm support
 - Article RUB2000-7: For goods with a requirement of 70 mm support
- Cubicle beds are placed after the adjacent concrete slats for a closer connection. When mounting 2 cubicle beds with the front side against each other, the possible tolerance between the front sides is absorbed. If desired, the tolerance can be closed with mortar by the customer / contractor.
- The tolerances on the product dimensions must be taken into account.
- If the goods are processed / sawn on site, the warranty will expire.
- The goods may not be used as a work floor during the construction process. If there is no other technical option, it is recommended to protect the goods with flat steel, wood or plastic plates to avoid direct contact with the goods. Damage resulting from this is not covered by the warranty.
- Do not allow unauthorized persons to enter the construction site.

LOAD CAPACITY OF THE GOODS

The goods can be placed immediately after delivery.

The goods may only be fully loaded from 28 days after the production date.

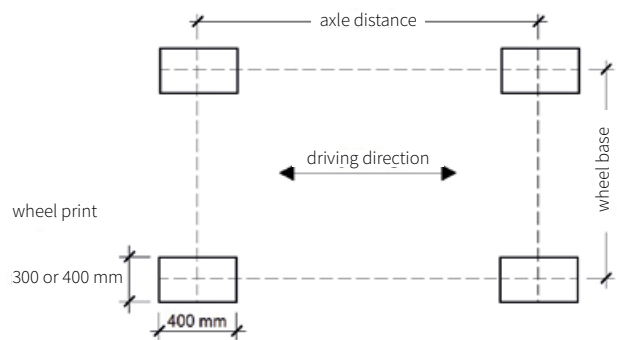
The production date is stated on the label. If the label is missing, the products may only be fully loaded from 28 days after delivery. In principle, the load capacity and / or load class of the goods is described in various types of documentation (product brochures, technical information on the website, product sheets ...). If the load capacity stated on the sales order confirmation differs from the one stated in other documentation, then the load capacity of the sales order confirmation applies. For products that are shortened (in length, width and / or height), the load capacity is not guaranteed, unless specifically determined.

If you have any doubts or conflicting information regarding load capacity, you must contact Anders Beton.

Driveable goods

Anders Beton's goods that are driveable are always calculated based on load from vehicles fitted with pneumatic tires. Under no circumstances Anders Beton goods are suitable for vehicles that are not equipped with pneumatic tires (e.g. tracked vehicles). The load capacity of the goods is expressed in animal weights, line loads, distributed loads and axle loads. In the case of axle loads, the corresponding characteristics are described in the documentation (wheel print, axle distance, wheel base, etc.).

Fit-in slats or shortened slats cannot be driven separately unless stated otherwise. It is important that all aspects related to driveability are strictly observed. If in doubt, you should contact Anders Beton.



ADDITIONAL ACTIONS BEFORE USE

Cleaning

Before using the products, you must clean the surface and the slot openings so that any residues from the construction process are removed.

Acidic environment

Anders Beton's products meet high quality standards. However, products consisting of concrete are not suitable for use in an acidic environment (pH value <6). If the products are used in an acidic environment, provide them with a separate top layer before use to avoid damage. Check regularly during use if the top layer still offers sufficient protection to prevent damage.

Heavy load

Anders Beton's products that are suitable for an axle load of more than 10 tons and which are provided with slots, must be provided with bevelled edges of at least 5 x 5 mm before use. The bevelled edges prevent loads directly on the sharp slot edge to prevent damage as much as possible. It's recommended to use pneumatic tires with a wheel print as large as possible to reduce point loads. Damage to ventilation slats through use in storage facilities (for potatoes, onions and related preservation products) are known. We would like to emphasize explicitly that such damage is not covered by the warranty conditions.

Deburring

The products are deburred in the factory as good as technically possible at the level of the slots and the sides. If, despite our actions, there are still burrs, please remove them before use to avoid damage and animal suffering.

SPECIFIC PROCESSING CONDITIONS

There are additional specific processing conditions for certain products. In case of discrepancies, the specific processing conditions are leading.

