



## SMART AGRICULTURE TECHNOLOGY & S.T.E.A.M. FARM EDUCATION

Skyponic Farming offers an innovative approach to sustainable farming, with clean and safe materials, and synchronized systems and operations to increase efficiency and productivity.

Hydroponic installations can serve as an holistic environment -- offering opportunities for multi-purpose-uses that support aesthetic and therapeutic sensory spaces, as well as crop production through a unique and innovative solution.

### OUR APPROACH

Skyponic's model represents **three (3) primary Commercial Agriculture Technology, Consulting, and Training domains:**

1. Hydroponic System Design/Build and Consulting
2. Cultivation, Product Processing, and Technical Assistance
3. Hydroponic and STEAM Farm Training and Education

### OUR PROCESS

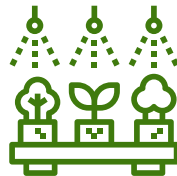
#### PLANNING & DESIGN



Skyponic Consultant Services offers comprehensive project phase strategy and implementation planning, including functionality and design options, equipment selection, and environmental control assessment. We collaborate closely with trusted subcontractors and vendors to provide a detailed budget breakdown for equipment, parts, and supplies.

#### CONSTRUCTION & INSTALLATION

In the construction and installation phase, the Skyponic Installation Team coordinates the delivery and installation of all necessary equipment and supplies. This includes LED grow lights, air circulation systems, hydro system plumbing and more.



#### SYSTEM MAINTENANCE & PROGRAMMING



For ongoing system maintenance and programming, Skyponic Farming oversees the regular upkeep of the hydroponic operation, plant health, cleaning, hydroponic nutrients, supply management and plant nursery orders.



Skyponic Hydroponic Retail Install - Golden Goose, Soho NY

S

#### FARM SCIENCE

Plant Biology, Atmosphere Replication, Hydroponic Nutrient Mastery, Plant Health, and Organic Quality Control

T

#### FARM TECHNOLOGY

Mastering NFT, Deep Water Culture, & Vertical Hydroponic Production, Atmosphere Control & Maintenance, Sensor & Farm Software Program Integration

E

#### FARM ENGINEERING

Mastery of electrical, Sensor & Mechanical Components, and Design and Production of Custom Hydroponic Grow Systems

A

#### FARM ART & AGRICULTURE

Provide Fresh Produce to Existing Culinary Arts Programs and Marketing Activities that Feature Produce Transformed into Added-Value Products

M

#### FARM MATHEMATICS

From Plant Growth Rate Record Keeping, Nutrient and Water Ratio Maintenance, to Harvest Tabulation, and Produce Product Accounting

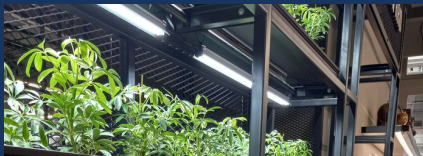
AGRITECH FARMING



## ADVANCING ECONOMIC & WORKFORCE DEVELOPMENT

Skyponic's enterprise model fosters an ecosystem for sustainable economic development in hydroponic, aquaponic, outdoor commercial farming, and related industries in urban and developing communities.

Specializing in cultivating premium produce, as well as designing immersive sensory environments, Skyponic provides a collaborative approach, ensuring sustainability and maximizing benefits for customers and communities.



☎ 202.599.8367  
✉ skyponic@proton.me  
🌐 skyponicfarming.com

## FEATURED PROJECTS

PROVIDING URBAN FARMING AND COMMERCIAL HYDROPONIC CONSULTING, PRODUCTION AND EXCLUSIVE CLIENTELE GROW SERVICES



### SKYPONIC FARMING INSTALLS THE LARGEST HYDROPONIC GROW SYSTEM FOR A RETAIL BOUTIQUE IN SOHO, NEW YORK

This indoor hydroponic system provides an aesthetic and clean-air ambiance through live plants as a backdrop for the store's merchandise and special events.



Golden Goose, Soho NY

HYDROPONIC GROW SYSTEM DESIGN | INSTALLATION | MAINTENANCE | TRAINING

### NYC'S FIRST HOUSING & MEDICAL CAMPUS WITH INTEGRATED HYDROPONIC GREENHOUSE FACILITY



Skyponic is the partner for this 1,700-square-foot greenhouse on the campus of Kingsbrook Estates. This facility will provide fresh food, as well as therapeutic programs and supports to this 300-unit campus of affordable housing.

Rendering: Kingsbrook Medical Village Greenhouse Brooklyn, NY

The medical village is designed to support seniors, families, and those with disabilities within the East Flatbush section of Brooklyn.

### 6TH FLOOR INDOOR GARDEN OASIS AT AFFORDABLE SENIOR LIVING HIGH-RISE

The 28-story Carmen Villegas Apartments (CVA) in East Harlem, Manhattan, will feature 217 units of affordable senior housing, ground floor commercial and community facility space, and a 6th-floor indoor garden. Named after local activist Carmen Villegas, this development will serve as a vibrant testament to the neighborhood's vitality and support the community's affordable housing initiatives.



Rendering: Carmen Villegas Apartments - Harlem, NYC

