

Next Generation Insurance for Time-Critical Freight

Insure your financial losses, business interruption, and consequential damages with our cargo delay insurance.

- For inquiries about investment & partnership:

Yann Barbarroux, CEO & Co-Founder

yann@otonomi.ai

+1 (646) 821-3455

Licensed representative
contact for details:

- For inquiries about sales & broking:

Charlie Schaper, Director of Insurance & Broking

charlie.schaper@otonomi.ai

+1 (303) 886-4922

Disclaimer: All insurance information is provided exclusively by Otonomi Insurance Services, LLC ("Insurance Services"). Insurance Services is currently licensed as an insurance producer in the following states: CO, DE, IL, IN, KY, MD, MI, MN, NH, NY, OH, PA, and WI. This disclaimer will be updated upon receipt of additional state licenses. Customers from outside those states should inquire with Otonomi as to the names of any licensed brokers or producers that can provide insurance-related information for its parametric cargo delay insurance program.

Case Study #3: Vaccines Shipment

Based on country reported data, WHO estimates that, across 47 vaccines and 94 manufacturers, the 2021 global vaccine market supplied approximately 16 bn vaccine doses (up from 5.8 bn in 2019), with a value of \$141 bn (up from \$38 bn in 2019). Air cargo carries the majority of pharmaceutical and life science products. In fact, they make up 1.9% of all air cargo volume and contribute 2.6% of total airline cargo revenues, equivalent to \$2.5 bn.

1. Cold-Chain Logistics

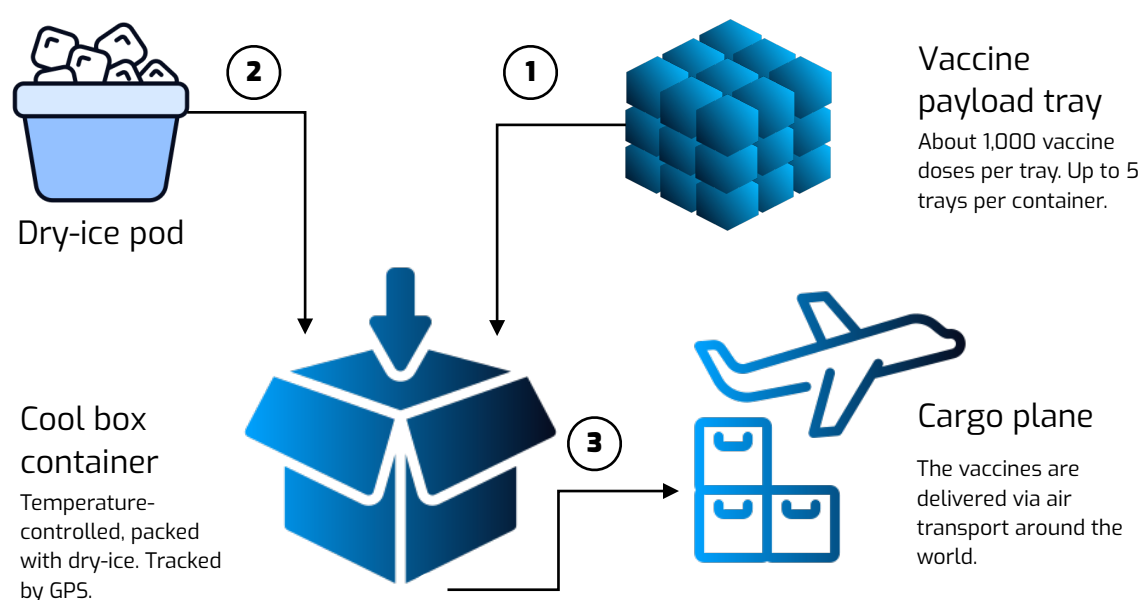


Source: <https://www.canva.com>

- Given the low temperature requirements of many vaccines, the logistics industry faces rigorous cold chain transportation challenges. This is further complicated with a high degree of scrutiny by manufacturers and governmental entities to ensure that vaccines are delivered efficiently, and safely shipped.
- FedEx and UPS, key carriers of vaccines routinely rely on commercial airlines to support shipments that their networks can't handle, creating a complicated logistical challenge when different temperatures requirements.

2. A Time Sensitive Logistics

- Order placed: [PharmAir](#), a freight forwarder specialized in pharmaceutical logistics, received an order to move 50,000 doses of vaccine from their supplier client [Horizon Medical](#).
- Requirements: Transportation by air from BOS to LAX. The Pfizer vaccine must be transported at a temperature of -94F and the Astra Zeneca at -36F in temperature-controlled thermal shipper boxes using dry ice.
- Time sensitive: When dry ice melts, it turn into carbon dioxide gas. If the dry ice melts, the vaccines could spoil. It's time critical freight.

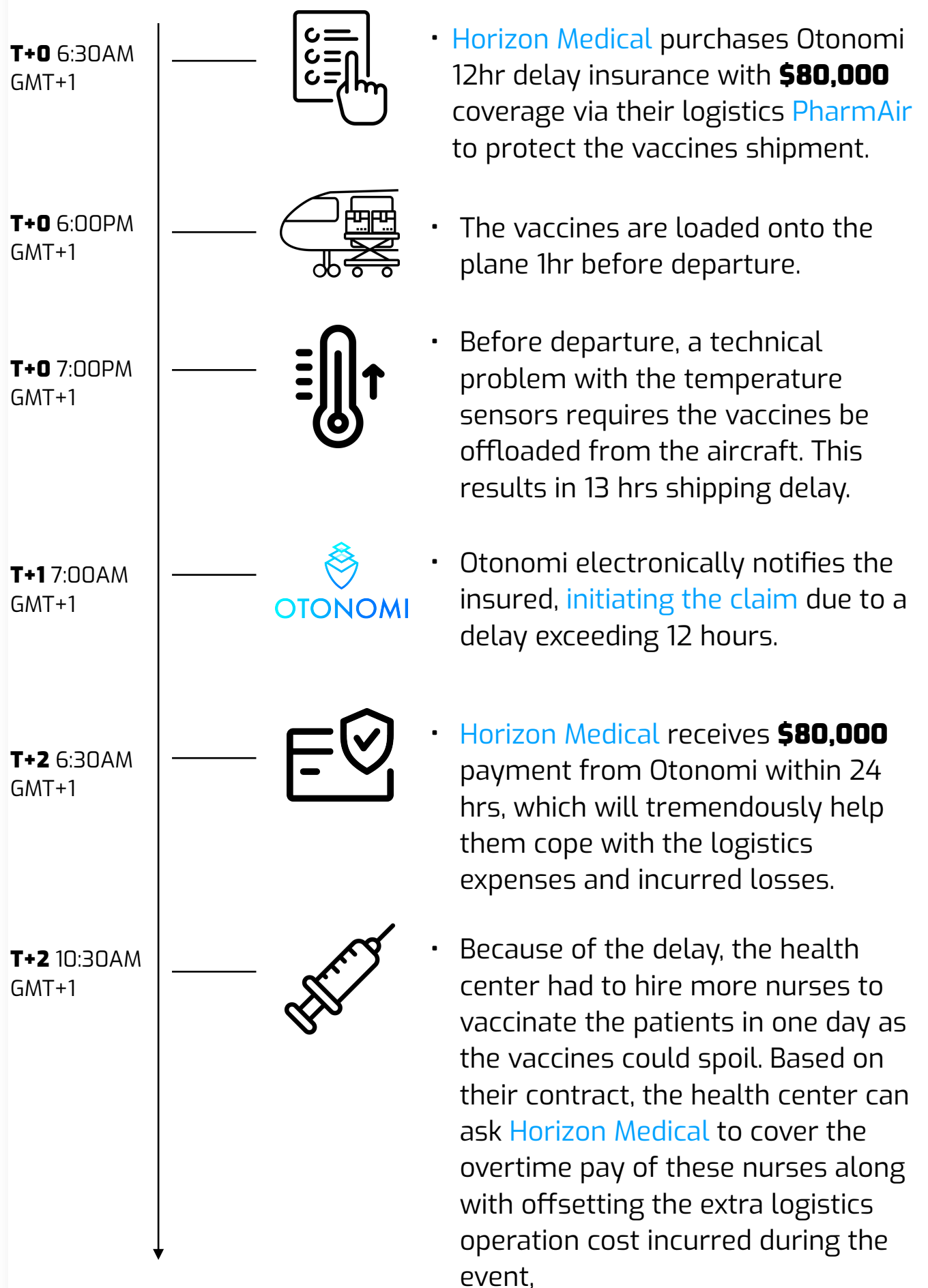


Source: <https://www.otonomi.ai>

3. Cargo Delay Insurance

Thanks to Otonomi, high-value vaccines shippers can quickly recover their losses due to [business interruption](#), [operational costs](#) and [loss of sales](#) while maintaining their client relationship intact, despite the unforeseen supply chain disruption.

This is how an [air shipment claim](#) gets settled automatically.



4. Market Metrics

Vaccine market figures:

- 8,000 Boeing 747 aircrafts would be necessary to transport vaccines for every human being on earth.
- The global vaccine cold chain logistics market is valued at US\$ 2.84 billion, and it is expected to reach US\$ 4.90 billion by 2030.
- 8,000 Boeing 747 aircrafts would be necessary to transport vaccines for every human being on earth.
- The global vaccine market represents 10% of the global pharmaceutical market.