

VIVID BASIC

With its exceptionally thin and domed profile, Vivid Basic allows lighting designers to create organic shapes for dramatic lighting effects. Its uniform light creates a dot-free seamless effect from start to finish. Available in static.

- A 02 FIXTURES
- A 04 CONNECTORS
- A 12 MOUNTING PROFILES
- A 28 ACCESSORIES
- A 30 WIRING DIAGRAMS
- A 32 PACKAGING
- A 36 TESTING

PVC: 24V

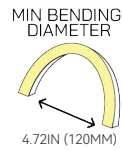
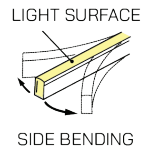
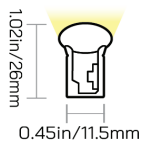


UL2108 CLASS 2

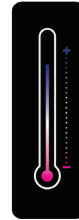
CE-EMC

5 YEAR WARRANTY

24V DC



Temperatures



AMBIENT
OPERATING
-13°F TO 131°F
(-25°C TO 55°C)



AMBIENT
INSTALLATION
32°F TO 131°F
(0°C TO 55°C)



FIXTURE
STORAGE
-4°F TO 140°F
(-20°C TO 60°C)



MAX MOUNTING
SURFACE
140°F (60°C)



HUMIDITY NON
CONDENSING
0-95%

THERMAL
MANAGEMENT
FREE AIR CONVECTION

Physical Attributes

FLAME
RESISTANTUV
RESISTANTSOLVENT
RESISTANTSALT
RESISTANTINDOOR/
OUTDOOR

DIMMABLE

IK 10
PROTECTION*IP 68
PROTECTION*

* The highest achievable IP rating with appropriate connector accessories & The highest achievable IK rating with appropriate mounting accessories.
Note: Lumen Maintenance: 70,000 Hours L70 @ 25°C : 90,000 L50 @ 25°C 50,000 Hours L70 @ 50°C : 70,000 Hours L50 @ 50°C

Wiring: LED Functions



Connectors Available

Swivel; Snap; PVC Seamless; and PVC Submersible.

Mounting Profiles Available

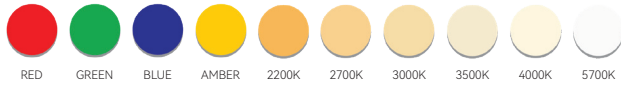
Aluminum Basic; Aluminum Recessed; Aluminum Silicone Grip; Aluminum Silicone Grip Recessed; Aluminum Flexible; Aluminum Raceway; Aluminum Raceway Suspended; Plastic Reinforced; and Stainless Steel Clip.

Order Code

V	2	A	1	W	1	A	1	A	3V	H
SERIES	MATERIAL	PROFILE	BENDING	JACKET/BASE + LENS COLOR	LED FUNCTION	LED COLOR	CHIP + CRI	POWER	VOLTAGE	ORDER UNIT LENGTH
V = Vivid	2 = PVC	A = Basic	1 = Side	W = White + Diffused	1 = Static	A = Amber B = Blue C = Green E = Red H = 2200K J = 2700K L = 3000K M = 3500K N = 4000K Q = 5700K	1 = Epistar SMD LED 2 = Epistar SMD LED + CRI80	A = 1.06w/ft (3.5w/m) B = 1.37w/ft (4.5w/m)	3V = 24V DC CV (Constant Voltage)	F = 3.28in (83.3mm) H = 4.92in (125mm)

STATIC: WHITES + COLORS - WHITE+DIFFUSED JACKET

LED Colors



Jacket Color



Order Codes

ORDER CODE	COLOR
V2A1W1A1A3VH	AMBER
V2A1W1B1B3VF	BLUE
V2A1W1C1B3VF	GREEN
V2A1W1E1A3VH	RED
V2A1W1H2B3VF	2200K
V2A1W1J2B3VF	2700K
V2A1W1L2B3VF	3000K
V2A1W1M2B3VF	3500K
V2A1W1N2B3VF	4000K
V2A1W1Q2B3VF	5700K

Electrical

COLOR	VOLTAGE	POWER CONSUMPTION
AMBER	24V DC CV	1.06W/ft (3.5W/m)
BLUE		1.37W/ft (4.5W/m)
GREEN		1.37W/ft (4.5W/m)
RED		1.06W/ft (3.5W/m)
2200K		1.37W/ft (4.5W/m)
2700K		1.37W/ft (4.5W/m)
3000K		1.37W/ft (4.5W/m)
3500K		1.37W/ft (4.5W/m)
4000K		1.37W/ft (4.5W/m)
5700K		1.37W/ft (4.5W/m)

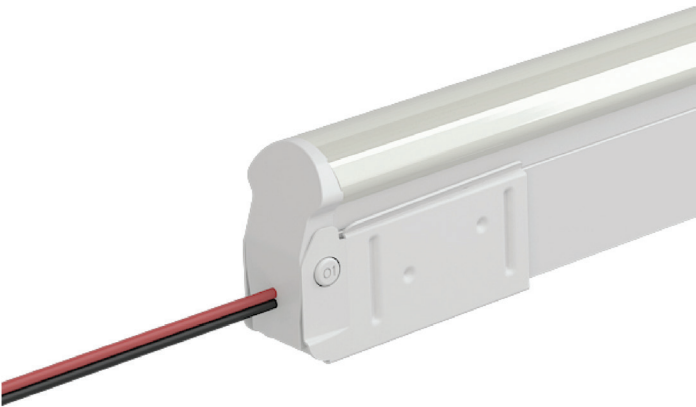
Fixture Specifications

COLOR	LED CHIP + FIXTURE CRI	LED COUNT	1 CONNECTOR FULL/DYNAMIC	2 CONNECTORS FULL/DYNAMIC	ORDER UNIT (CUTTING UNIT)
AMBER	Epistar SMD LED Chip	22 LEDs/ft (72 LEDs/m)	65.62ft (20m) / N/A	131.23ft (40m) / N/A	4.92in (125mm) (9 LEDs)
BLUE	Epistar SMD LED Chip		49.21ft (15m) / N/A	98.43ft (30m) / N/A	3.28in (83.3mm) (6 LEDs)
GREEN	Epistar SMD LED Chip		49.21ft (15m) / N/A	98.43ft (30m) / N/A	3.28in (83.3mm) (6 LEDs)
RED	Epistar SMD LED Chip		65.62ft (20m) / N/A	131.23ft (40m) / N/A	4.92in (125mm) (9 LEDs)
2200K	Epistar SMD LED Chip + CRI80		49.21ft (15m) / N/A	98.43ft (30m) / N/A	3.28in (83.3mm) (6 LEDs)
2700K	Epistar SMD LED Chip + CRI80		49.21ft (15m) / N/A	98.43ft (30m) / N/A	3.28in (83.3mm) (6 LEDs)
3000K	Epistar SMD LED Chip + CRI80		49.21ft (15m) / N/A	98.43ft (30m) / N/A	3.28in (83.3mm) (6 LEDs)
3500K	Epistar SMD LED Chip + CRI80		49.21ft (15m) / N/A	98.43ft (30m) / N/A	3.28in (83.3mm) (6 LEDs)
4000K	Epistar SMD LED Chip + CRI80		49.21ft (15m) / N/A	98.43ft (30m) / N/A	3.28in (83.3mm) (6 LEDs)
5700K	Epistar SMD LED Chip + CRI80		49.21ft (15m) / N/A	98.43ft (30m) / N/A	3.28in (83.3mm) (6 LEDs)

Optical Parameters

COLOR BREAKDOWN	FIXTURE COLOR TOLERANCE	WAVELENGTH/CCT	LED CRI	LED COLOR TOLERANCE	LUMEN COUNT
AMBER	N/A	588-594nm	N/A	3nm	20lm/ft (65lm/m)
BLUE	N/A	468-474nm	N/A	3nm	6lm/ft (20lm/m)
GREEN	N/A	522-528nm	N/A	3nm	30lm/ft (100lm/m)
RED	N/A	618-624nm	N/A	3nm	18lm/ft (60lm/m)
2200K	6SDCM	2238 ± 102K	82-87	2.3SDCM	43lm/ft (140lm/m)
2700K	6SDCM	2725 ± 145K	82-87	2.3SDCM	43lm/ft (140lm/m)
3000K	6SDCM	3045 ± 175K	82-87	2.3SDCM	49lm/ft (160lm/m)
3500K	6SDCM	3465 ± 245K	82-87	2.3SDCM	49lm/ft (160lm/m)
4000K	6SDCM	3985 ± 275K	82-87	2.3SDCM	49lm/ft (160lm/m)
5700K	6SDCM	5669 ± 355K	82-87	2.3SDCM	43lm/ft (140lm/m)

SWIVEL CONNECTOR: DIY



IP20, Omni-directional Cable, Tool-less, Mini Size. Recommended for indoor dry environments and for on-site length adjustments. Under the simple and convenient design concept, we developed our swivel connector, which is superb for indoor concealed installation in narrow space thanks to its mini size and omni-directional cable. Navigated by user manual, tool-free and quick assembly can be realized, and Press & Seal design enables the functions of energization and dust-proof rapidly. DIY or custom factory assembly.



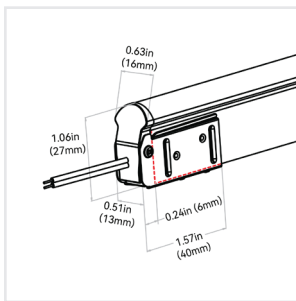
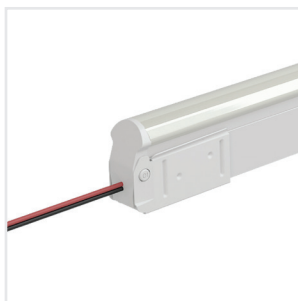
- NOTES:
- 1. Connector Tolerance $\pm 0.02\text{in}$ (0.5mm)
 - 2. We recommend leaving 2.36in (60mm) of connector wire in its natural state. Bending too close to the fixture can result in damage.
 - 3. Ensure Max. Cable Lengths are followed according to wire gage to avoid voltage drop.

Connector Order Code:

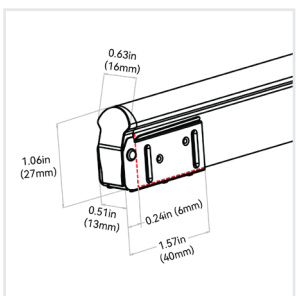
Will be displayed: Connector Order Code (01 exit) + Fixture Order Code + Connector Order Code (02 exit)

6	A	#
CONNECTOR TYPE	ORIENTATION + TYPE	LEAD WIRE LENGTH
6 = Swivel X = Custom	A = End Exit I = End Cap X = Custom	1 = 0.98ft (0.3m) 2 = 3.28ft (1m) 8 = N/A X = Custom

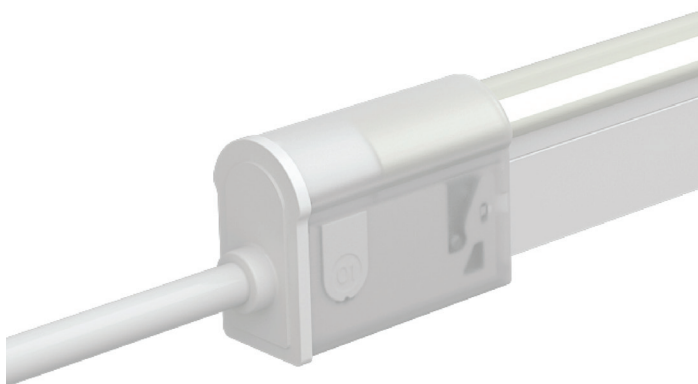
End Exit: 6-A-#



End Cap: 6-I-8



SNAP CONNECTOR: DIY



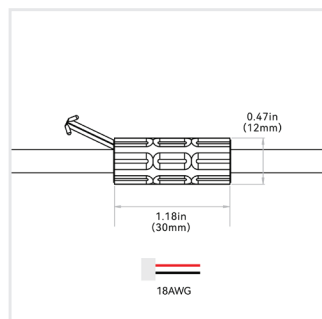
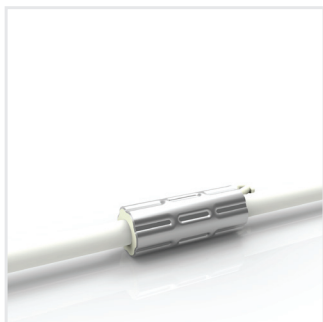
IP67, tool-less; good solution for protection from water ingress; larger connector & anti-wicking ferrule. Recommended for wet environments and on-site length adjustments. To seal the end of light and ensure the waterproof in case of any cutting or extension on site, Insulfit technology prevents the water or vapor ingress from the end of the light. DryWire technology applied on the cable eliminates the capillary phenomenon through wires, which secured the long-term reliability in any wading environments. DIY or custom factory assembly.



NOTES:

1. Connector Tolerance $\pm 0.02\text{in}$ (0.5mm)
2. We recommend leaving 2.36in (60mm) of connector wire in its natural state. Bending too close to the fixture can result in damage.
3. Ensure Max. Cable Lengths are followed according to wire gage to avoid voltage drop.

Anti-wicking Ferrule:



NOTES:

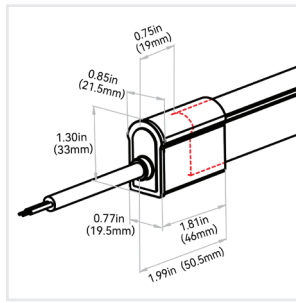
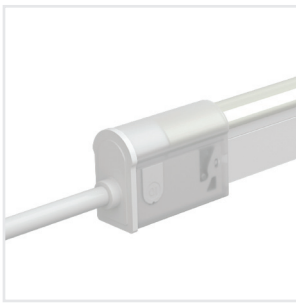
1. The anti-wicking ferrule is located at 4.53in (115mm) ($\pm 0.39\text{in}$ [$\pm 10\text{mm}$] tolerance) from the connector on the cable. For protection against water ingress.
2. The removal of anti-wicking ferrule will void the warranty if any water ingress caused by it.

Connector Order Code:

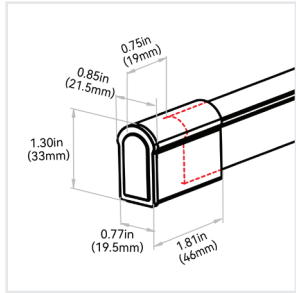
Will be displayed: Connector Order Code (01 exit) + Fixture Order Code + Connector Order Code (02 exit)

7	A	#
CONNECTOR TYPE	ORIENTATION + TYPE	LEAD WIRE LENGTH
7 = Snap X = Custom	A = End Exit E = End Jumper H = Power T-Feed I = End Cap V = Barrel Connector Male W = Barrel Connector Female X = Custom	1 = 0.98ft (0.3m) 2 = 3.28ft (1m) 3 = 9.84ft (3m) 4 = 16ft (5m) 5 = 32.81ft (10m) 6 = 49.21ft (15m) 7 = 65.62ft (20m) 8 = N/A X = Custom

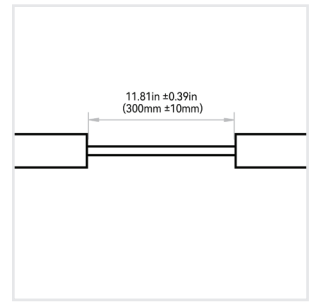
End Exit: 7-A-#



End Cap: 7-I-8

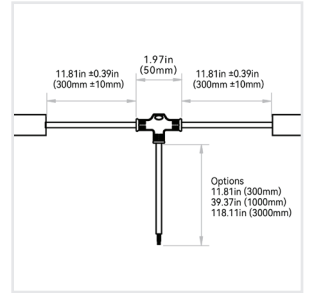


End Jumper: 7-E-1



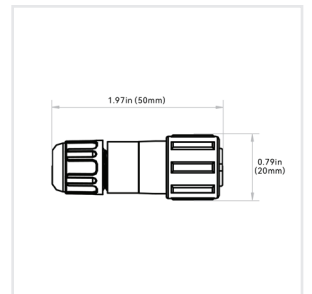
NOTE: Max. 4 Jumpers in 32.8ft (10m) Runs & 8 Jumpers in 65.6ft (20m).

Power T-Feed: 7-H-#



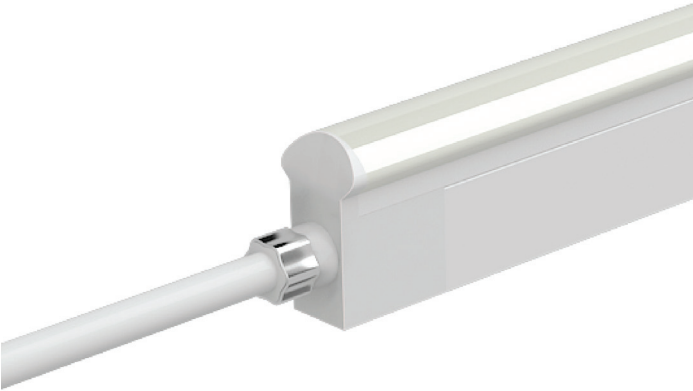
NOTE: Max. 4 T-Feeds in 32.8ft (10m) Runs & 8 T-Feeds in 65.6ft (20m).

Barrel Connectors - IP67: 7-(V or W)-#



NOTE: The tolerance is ± 0.08 in (2mm).

PVC SEAMLESS CONNECTOR: CUSTOM

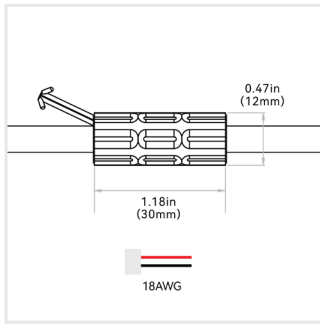
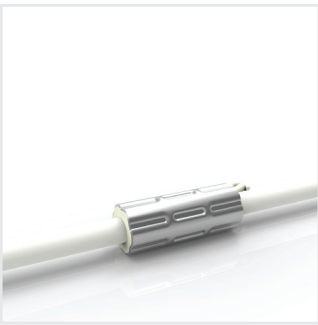


IP67; seamless; anti-wicking ferrule. Recommended for wet environments & for custom predetermined lengths. Adopting precision milling and special glue PVC injection molding workmanship, the transparent terminal of the connector allows the seamless effects spliced end by end. The copper ring protects the cable joint from the damage of excessively external force in the process of installation. DryWire technology applied on the cable eliminates the capillary phenomenon through wires, which secured the long-term reliability in outdoor or any wet environments. Light lengths can be customized on the basis of projects and pre-installation before the delivery eases the assembly trouble on site. Custom factory assembly.



- NOTES:
- 1. Connector Tolerance $\pm 0.02\text{in}$ (0.5mm)
 - 2. We recommend leaving 2.36in (60mm) of connector wire in its natural state. Bending too close to the fixture can result in damage.
 - 3. Ensure Max. Cable Lengths are followed according to wire gage to avoid voltage drop.

Anti-wicking Ferrule:



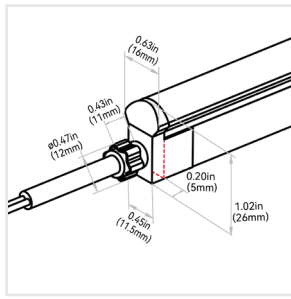
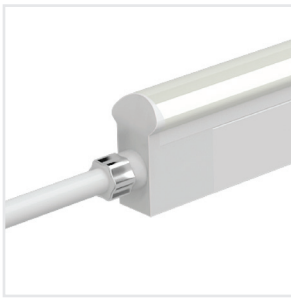
- NOTES:
- 1. The anti-wicking ferrule is located at 4.53in (115mm) ($\pm 0.39\text{in}$ [$\pm 10\text{mm}$] tolerance) from the connector on the cable. For protection against water ingress.
 - 2. The removal of anti-wicking ferrule will void the warranty if any water ingress caused by it.

Connector Order Code:

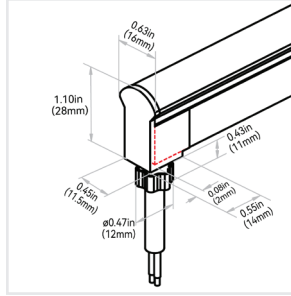
Will be displayed: Connector Order Code (01 exit) + Fixture Order Code + Connector Order Code (02 exit)

1	A	#
CONNECTOR TYPE	ORIENTATION + TYPE	LEAD WIRE LENGTH
1 = PVC Seamless X = Custom	A = End Exit B = Bottom Exit C = Side Left Exit D = Side Right Exit E = End Jumper G = Side Jumper H = Power T-Feed I = End Cap V = Barrel Connector Male W = Barrel Connector Female X = Custom	1 = 0.98ft (0.3m) 2 = 3.28ft (1m) 3 = 9.84ft (3m) 4 = 16ft (5m) 5 = 32.81ft (10m) 6 = 49.21ft (15m) 7 = 65.62ft (20m) 8 = N/A X = Custom

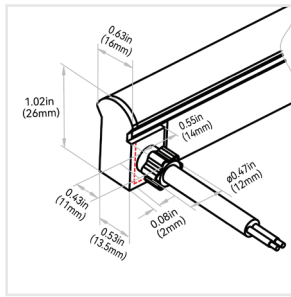
End Exit: 1-A-#



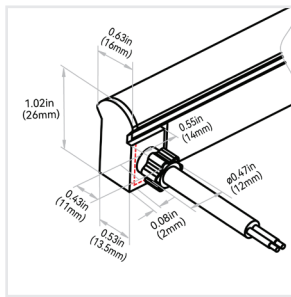
Bottom Exit: 1-B-#



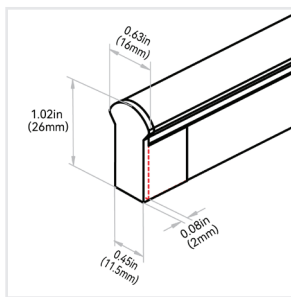
Side Left Exit: 1-C-#



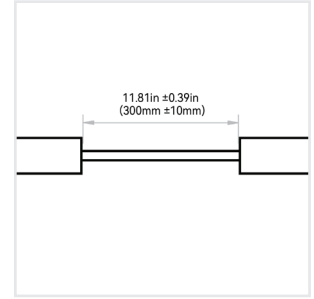
Side Right Exit: 1-D-#



End Cap: 1-I-8

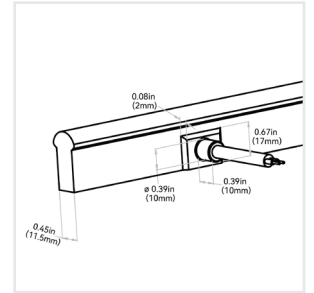


End Jumper: 1-E-1

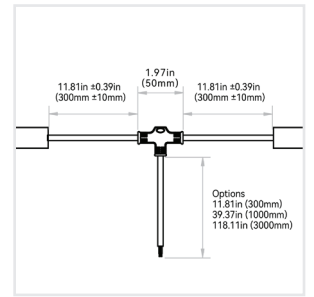


NOTE: Max. 4 Jumpers in 32.8ft (10m) Runs & 8 Jumpers in 65.6ft (20m).

Side Jumper: 1-G-#

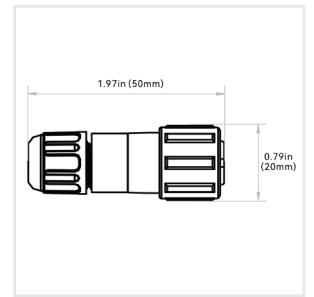


Power T-Feed: 1-H-#



NOTE: Max. 4 T-Feeds in 32.8ft (10m) Runs & 8 T-Feeds in 65.6ft (20m).

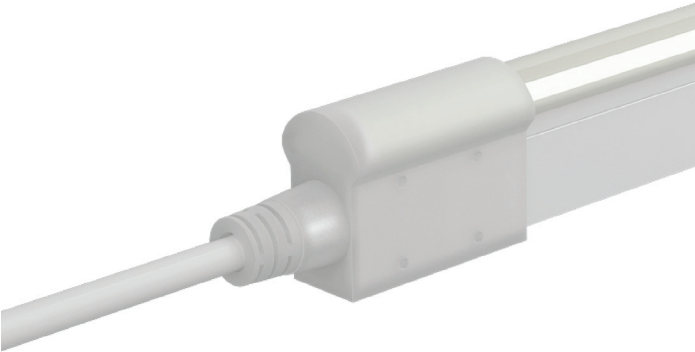
Barrel Connectors - IP67: 1-(V or W)-#



NOTE: The tolerance is ±0.08in (2mm).

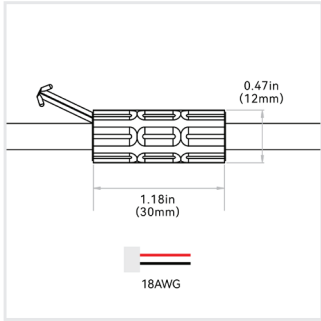
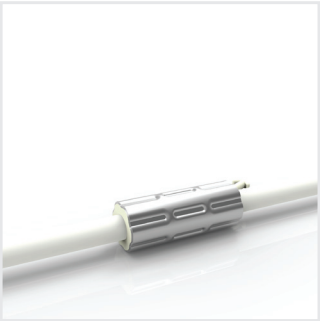
PVC SUBMERSIBLE CONNECTOR: CUSTOM

IP68; extremely durable & anti-wicking ferrule. Recommended for; long-term submersed in wet environments up to the depth of 6.56ft (2m); high temperature and humidity environments; custom pre determined lengths and larger connector; harsh working conditions & increased handling forces during installation. Custom factory assembly.



- NOTES: 1. Connector Tolerance ± 0.02 in (0.5mm)
2. We recommend leaving 2.36in (60mm) of connector wire in its natural state. Bending too close to the fixture can result in damage.
3. Ensure Max. Cable Lengths are followed according to wire gage to avoid voltage drop.

Anti-wicking Ferrule:



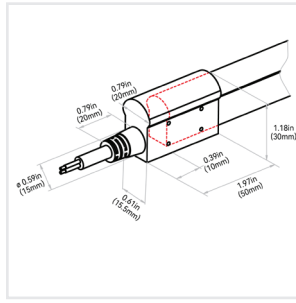
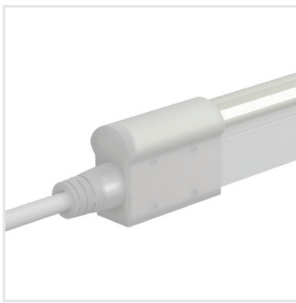
- NOTES: 1. The anti-wicking ferrule is located at 4.53in (115mm) (± 0.39 in [± 10 mm] tolerance) from the connector on the cable. For protection against water ingress.
2. For underwater application, do not immerse anti-wicking ferrule in the water. The removal of anti-wicking ferrule will void the warranty if any water ingress caused by it.

Connector Order Code:

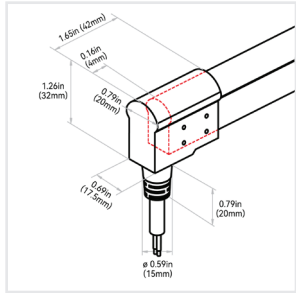
Will be displayed: Connector Order Code (01 exit) + Fixture Order Code + Connector Order Code (02 exit)

3	A	#
CONNECTOR TYPE	ORIENTATION + TYPE	CABLE LENGTH (LEAD WIRE)
3 = PVC Submersible	A = End Exit B = Bottom Exit C = Side Left Exit D = Side Right Exit E = End Jumper H = Power T-Feed I = End Cap V = Barrel Connector Male W = Barrel Connector Female X = Custom	1 = 0.98ft (0.3m) 2 = 3.28ft (1m) 3 = 9.84ft (3m) 4 = 16ft (5m) 5 = 32.81ft (10m) 6 = 49.21ft (15m) 7 = 65.62ft (20m) 8 = N/A X = Custom

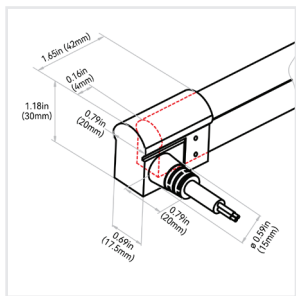
End Exit: 3-A-#



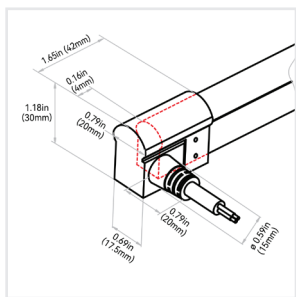
Bottom Exit: 3-B-#



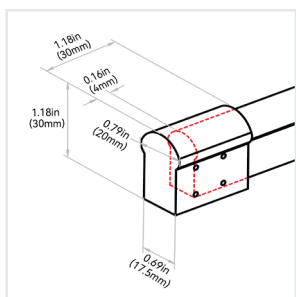
Side Left Exit: 3-C-#



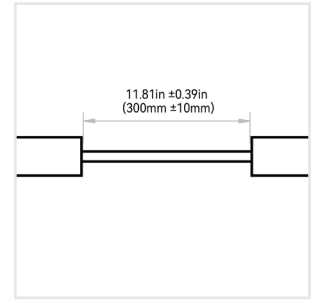
Side Right Exit: 3-D-#



End Cap: 3-I-8

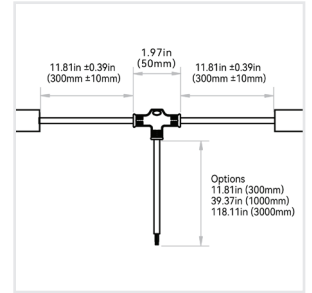


End Jumper: 3-E-1



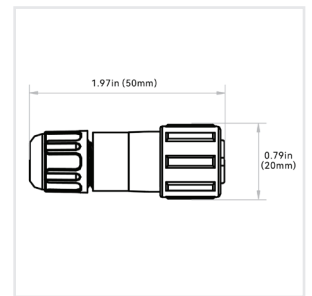
NOTE: Max. 4 Jumpers in 32.8ft (10m) Runs & 8 Jumpers in 65.6ft (20m).

Power T-Feed: 3-H-#



NOTE: Max. 4 T-Feeds in 32.8ft (10m) Runs & 8 T-Feeds in 65.6ft (20m).

Barrel Connectors - IP67: 3-(V or W)-#



NOTE: The tolerance is ± 0.08 in (2mm).

ALUMINUM PROFILE - BASIC



High-quality 6063 aluminum with thin-wall, light-weight design to fit the fixture tightly. It is deformation and rust resistant, and cost-effective.

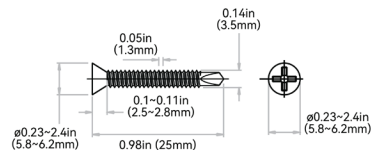
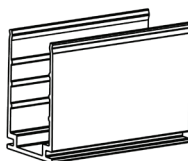
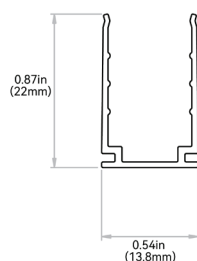
Please refer to install manual for proper installation practices.

Mounting Profile Order Code:

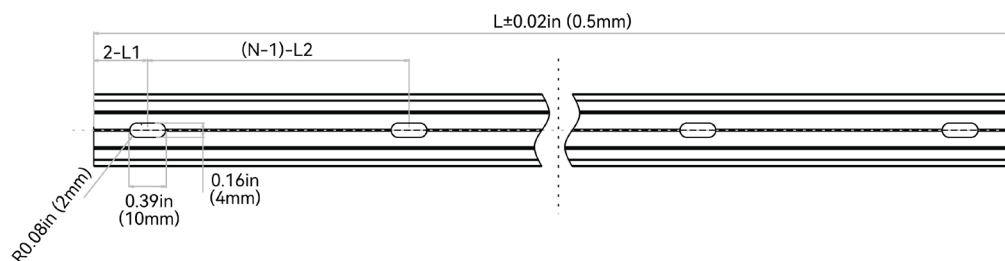
A1	#	A
MOUNTING PROFILE TYPE	STANDARD LENGTH	PROFILE
A1 = Aluminum Basic	2 = 1.38in (35mm) 3 = 19.68in (500mm) 5 = 39.37in (1000mm) 6 = 78.74in (2000mm) X = Custom	A = Vivid Basic



Dimensions + Hardware



Tolerance: $\pm 0.01\text{in}$ (0.3mm)



NOTES: 1. 2-L1 refers to two of symmetric L1 in each piece of profile.

2. (N-1)-L2 refers to (N minus one) of symmetric L2 in each piece of profile. "N" hereby stands for its corresponding "Hole Number" in the below table

ORDER CODE	STANDARD LENGTH	L1	L2	SLOTTED HOLE	HOLE #
A1-2-A	1.38in (35mm)	0.69in (17.5mm)	N/A	0.16*0.39in (4*10mm)	1
A1-3-A	19.68in (500mm)	1.97in (50mm)	7.87in (200mm)	0.16*0.39in (4*10mm)	3
A1-5-A	39.37in (1000mm)	3.93in (100mm)	7.87in (200mm)	0.16*0.39in (4*10mm)	5
A1-6-A	78.74in (2000mm)	3.93in (100mm)	7.87in (200mm)	0.16*0.39in (4*10mm)	10

ALUMINUM PROFILE - RECESSED



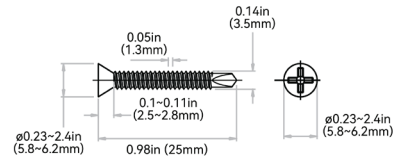
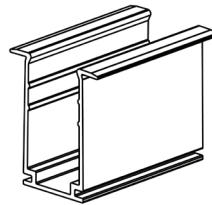
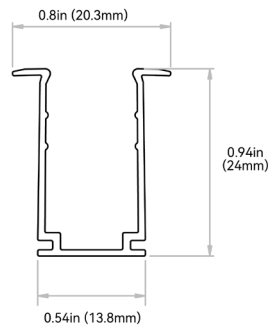
High-quality 6063 aluminum with thin-wall, light-weight design to fit the fixture tightly. Recommended on projects with lighting mounted recessed in a cavity so only the lens is shown. It is deformation and rust resistant, and cost-effective.

Please refer to install manual for proper installation practices.

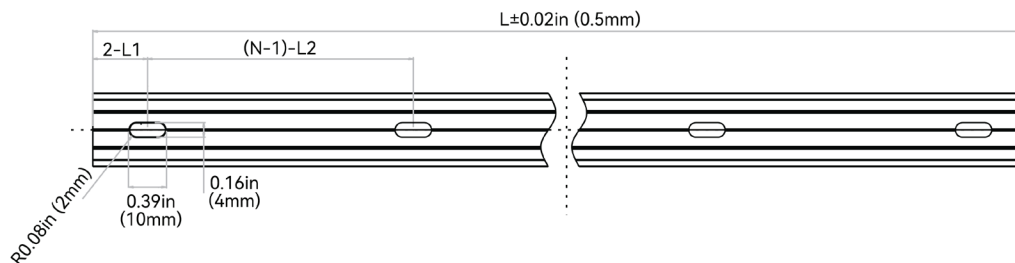
Mounting Profile Order Code:

A2	#	A
MOUNTING PROFILE TYPE	STANDARD LENGTH	PROFILE
A2 = Aluminum Recessed	2 = 1.38in (35mm) 3 = 19.68in (500mm) 5 = 39.37in (1000mm) 6 = 78.74in (2000mm) X = Custom	A = Vivid Basic

Dimensions + Hardware



Tolerance: $\pm 0.01\text{in}$ (0.3mm)

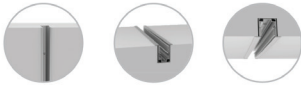


NOTES: 1. 2-L1 refers to two of symmetric L1 in each piece of profile.

2. (N-1)-L2 refers to (N minus one) of symmetric L2 in each piece of profile. "N" hereby stands for its corresponding "Hole Number" in the below table

ORDER CODE	STANDARD LENGTH	L1	L2	SLOTTED HOLE	HOLE #
A2-2-A	1.38in (35mm)	0.69in (17.5mm)	N/A	0.16*0.39in (4*10mm)	1
A2-3-A	19.68in (500mm)	1.97in (50mm)	7.87in (200mm)	0.16*0.39in (4*10mm)	3
A2-5-A	39.37in (1000mm)	3.93in (100mm)	7.87in (200mm)	0.16*0.39in (4*10mm)	5
A2-6-A	78.74in (2000mm)	3.93in (100mm)	7.87in (200mm)	0.16*0.39in (4*10mm)	10

ALUMINUM PROFILE - RECESSED - SILICONE GRIP



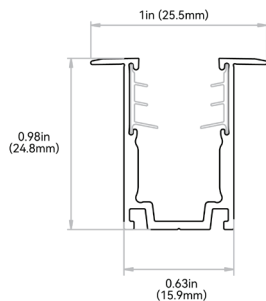
High-quality 6063 aluminum with thin-wall, light-weight design. Includes a silicone grip insert designed to hold fixture with additional force. Recommended on projects mounted upside down and recessed. It is deformation and rust resistant, and cost-effective.

Please refer to install manual for proper installation practices.

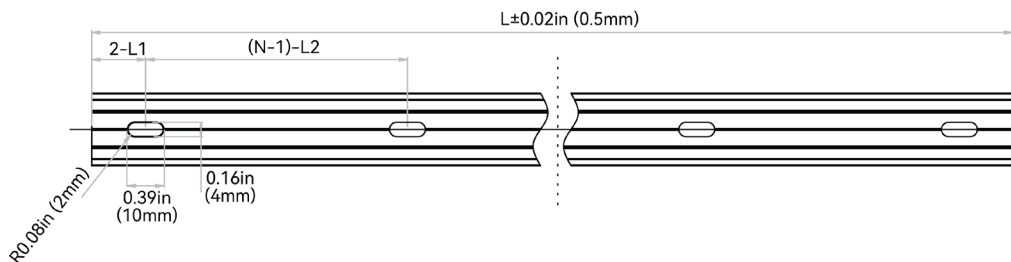
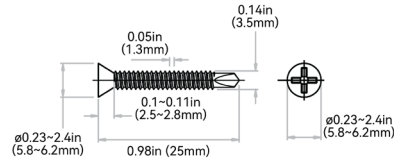
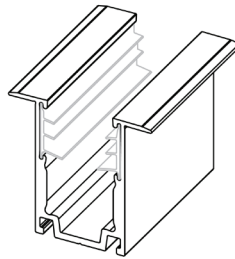
Mounting Profile Order Code:

A3	#	A
MOUNTING PROFILE TYPE	STANDARD LENGTH	PROFILE
A3 = Aluminum Recessed Silicone Grip	1 = 0.79in (20mm) 3 = 19.68in (500mm) 5 = 39.37in (1000mm) 6 = 78.74in (2000mm) X = Custom	A = Vivid Basic

Dimensions + Hardware



Tolerance: $\pm 0.01\text{in}$ (0.3mm)

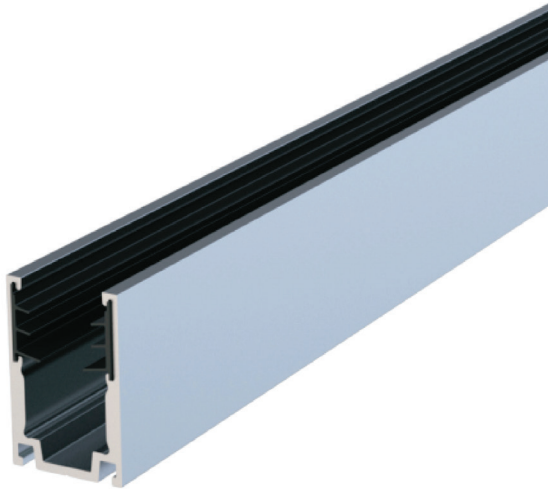


NOTES: 1. 2-L1 refers to two of symmetric L1 in each piece of profile.

2. (N-1)-L2 refers to (N minus one) of symmetric L2 in each piece of profile. "N" hereby stands for its corresponding "Hole Number" in the below table

ORDER CODE	STANDARD LENGTH	L1	L2	SLOTTED HOLE	HOLE #
A3-1-A	0.79in (20mm)	0.39in (10mm)	N/A	0.16*0.39in (4*10mm)	1
A3-3-A	19.68in (500mm)	1.97in (50mm)	7.87in (200mm)	0.16*0.39in (4*10mm)	3
A3-5-A	39.37in (1000mm)	3.93in (100mm)	7.87in (200mm)	0.16*0.39in (4*10mm)	5
A3-6-A	78.74in (2000mm)	3.93in (100mm)	7.87in (200mm)	0.16*0.39in (4*10mm)	10

ALUMINUM PROFILE - SILICONE GRIP



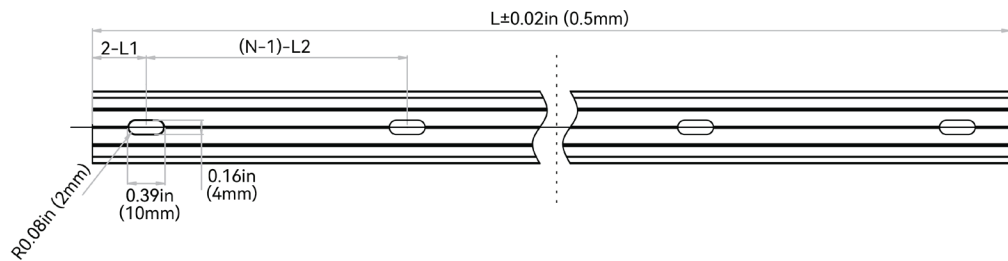
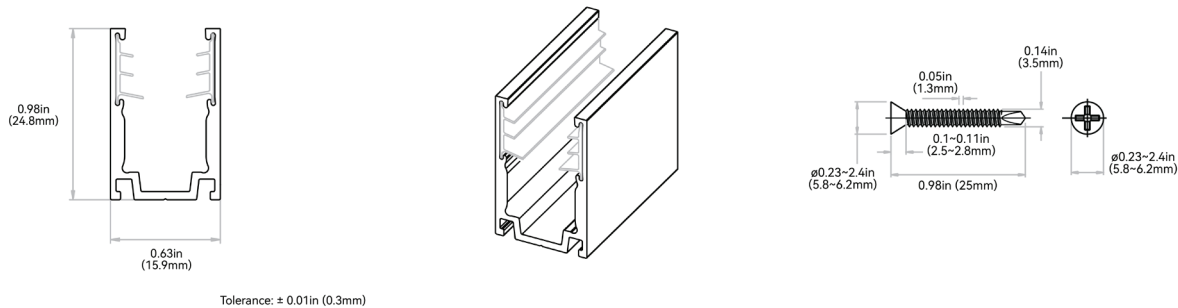
High-quality 6063 aluminum with thin-wall, light-weight design. Includes a silicone grip insert designed to hold fixture with additional force. Recommended on projects mounted upside down. It is deformation and rust resistant, and cost-effective.

Please refer to install manual for proper installation practices.

Mounting Profile Order Code:

A4	#	A
MOUNTING PROFILE TYPE	STANDARD LENGTH	PROFILE
A4 = Aluminum Silicone Grip	1 = 0.79in (20mm) 3 = 19.68in (500mm) 5 = 39.37in (1000mm) 6 = 78.74in (2000mm) X = Custom	A = Vivid Basic

Dimensions + Hardware

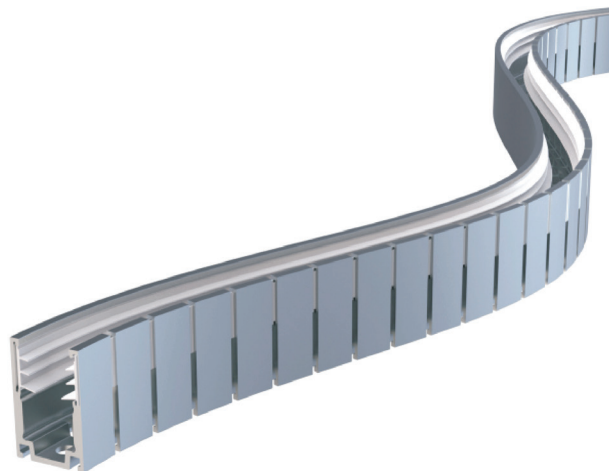


NOTES: 1. 2-L1 refers to two of symmetric L1 in each piece of profile.

2. (N-1)-L2 refers to (N minus one) of symmetric L2 in each piece of profile. "N" hereby stands for its corresponding "Hole Number" in the below table

ORDER CODE	STANDARD LENGTH	L1	L2	SLOTTED HOLE	HOLE #
A4-1-A	0.79in (20mm)	0.39in (10mm)	N/A	0.16*0.39in (4*10mm)	1
A4-3-A	19.68in (500mm)	1.97in (50mm)	7.87in (200mm)	0.16*0.39in (4*10mm)	3
A4-5-A	39.37in (1000mm)	3.93in (100mm)	7.87in (200mm)	0.16*0.39in (4*10mm)	5
A4-6-A	78.74in (2000mm)	3.93in (100mm)	7.87in (200mm)	0.16*0.39in (4*10mm)	10

ALUMINUM PROFILE - FLEXIBLE



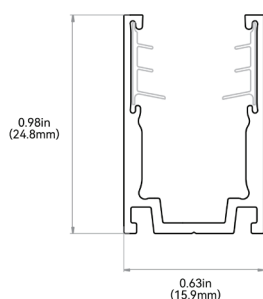
It is an expanded design of the flexible aluminum profile, and caters for the continuously streamlined aesthetics of curve shape. The secondary precision cutting process, not only maintains the advantage of clamping force, but also enables the two-way side bending directions with super shape memory.

Please refer to install manual for proper installation practices.

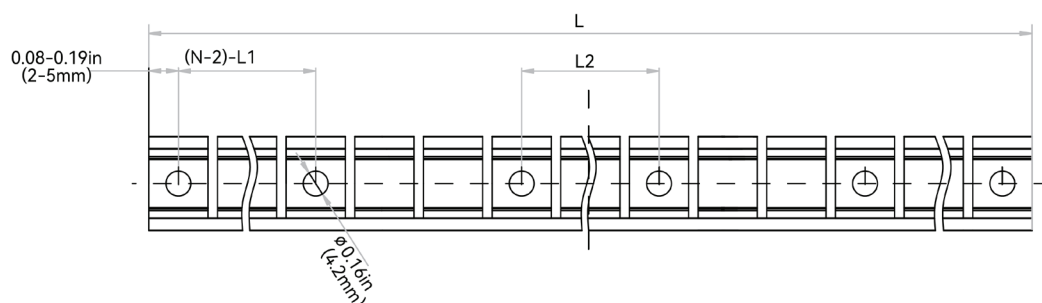
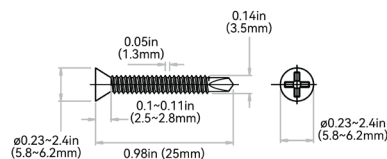
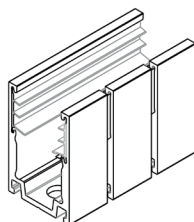
Mounting Profile Order Code:

A5	#	A
MOUNTING PROFILE TYPE	STANDARD LENGTH	PROFILE
A5 = Aluminum Flexible	3 = 19.68in (500mm) 5 = 39.37in (1000mm) X = Custom	A = Vivid Basic

Dimensions + Hardware



Tolerance: ± 0.01 in (0.3mm)



NOTES: 1. 2-L1 refers to two of symmetric L1 in each piece of profile.

2. (N-1)-L2 refers to (N minus one) of symmetric L2 in each piece of profile. "N" hereby stands for its corresponding "Hole Number" in the below table

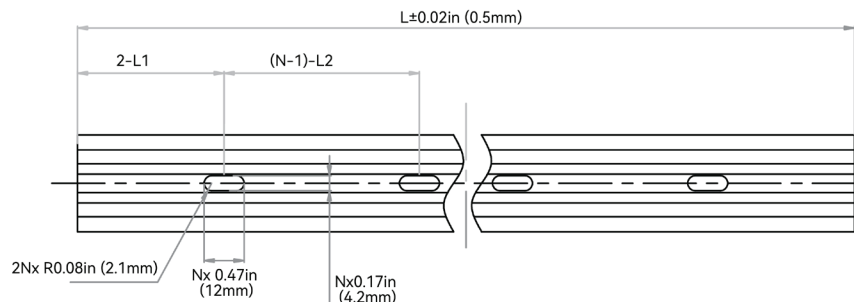
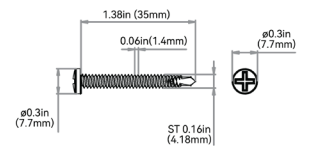
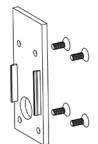
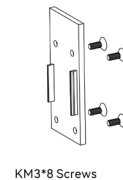
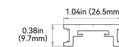
ORDER CODE	STANDARD LENGTH	L1	L2	SLOTTED HOLE	HOLE #
A5-3-A	19.68in (500mm)	4.34in (110.3mm)	1.92in (48.9mm)	$\phi 0.17$ in (4.2mm)	6
A5-5-A	39.37in (1000mm)	4.59in (116.5mm)	3.89in (98.8mm)	$\phi 0.17$ in (4.2mm)	10



Please refer to install manual for proper installation practices.

A8	#	A
MOUNTING PROFILE TYPE	STANDARD LENGTH	PROFILE
A8 = Aluminum Raceway	3 = 19.68in (500mm) 5 = 39.37in (1000mm) 6 = 78.74in (2000mm) X = Custom	A = Vivid Basic

Technical drawings of the 1000 Series Aluminum Extrusion. The drawings include a front view showing a U-shaped profile with a height of 2.44 in (62 mm) and a base width of 1.14 in (29 mm). A side view shows a depth of 0.99 in (25.1 mm) and a top flange width of 1.16 in (29.5 mm). Two perspective views show the extrusion from different angles, highlighting the internal structure and the 1000 Series marking.



2. (N-1)-L2 refers to (N minus one) of symmetric L2 in each piece of profile. "N" hereby stands for its corresponding "Hole Number" in the below table

ORDER CODE	STANDARD LENGTH	L1	L2	SLOTTED HOLE	HOLE #
A8-3-A	19.68in (500mm)	1.97in (50mm)	7.87in (200mm)	0.18"0.47in (4.5"12mm)	3
A8-5-A	39.37in (1000mm)	3.93in (100mm)	7.87in (200mm)	0.18"0.47in (4.5"12mm)	5
A8-6-A	78.74in (2000mm)	3.93in (100mm)	7.87in (200mm)	0.18"0.47in (4.5"12mm)	10

ALUMINUM PROFILE - RACEWAY - SUSPENDED



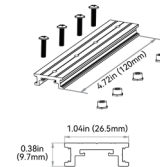
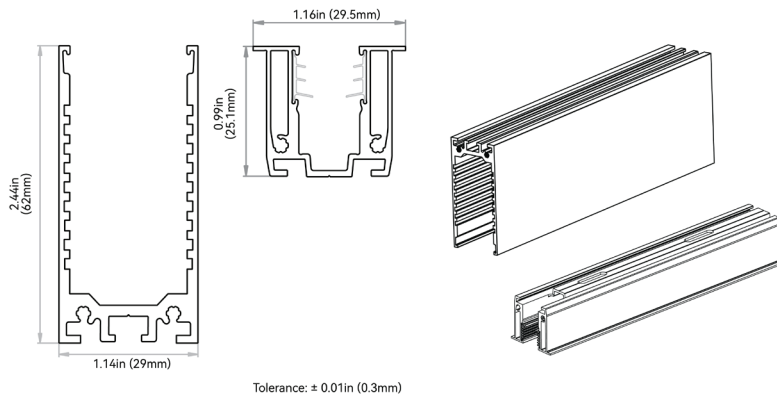
High-quality 6063 thin-wall aluminum, light-weight design featuring hidden cables and suspended by cables from the ceiling. The raceway space is enough to conceal seamless connectors with bottom feed and the general male/female connectors. It is superb for the facade where tidiness is required and the scenarios that lack of space for wiring.

Please refer to install manual for proper installation practices.

Mounting Profile Order Code:

A9	#	A
MOUNTING PROFILE TYPE	STANDARD LENGTH	PROFILE
A9 = Aluminum Raceway Suspended	3 = 19.68in (500mm) 5 = 39.37in (1000mm) 6 = 78.74in (2000mm) X = Custom	A = Vivid Basic

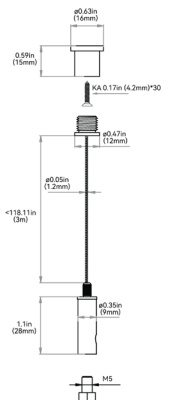
Dimensions + Hardware



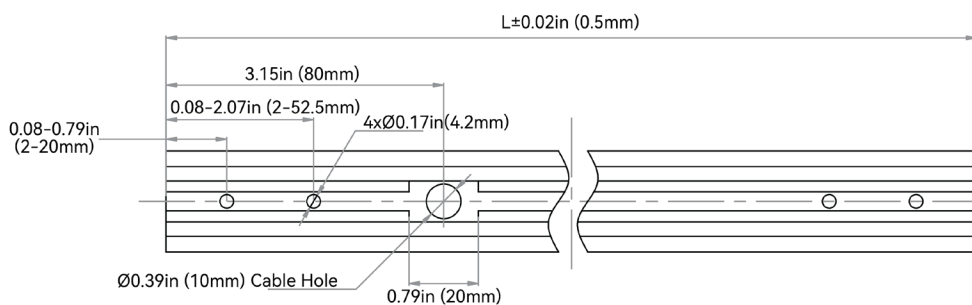
PMW4*18 Screws



KM3*8 Screws



PM4*6 Screws



ORDER CODE	STANDARD LENGTH
A9-3-A	19.68in (500mm)
A9-5-A	39.37in (1000mm)
A9-6-A	78.74in (2000mm)

PLASTIC PROFILE – REINFORCED



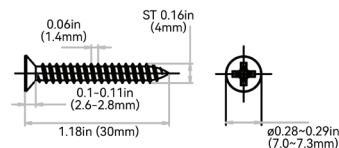
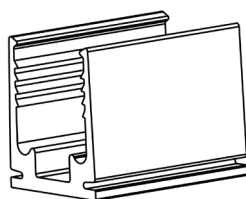
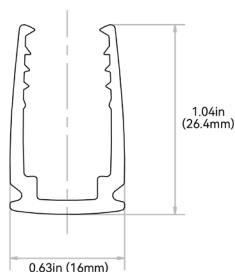
High Quality rigid plastic designed to securely hold fixtures. Recommended for use in extreme environments susceptible to increased water/humidity (SPA's and pools).

Please refer to install manual for proper installation practices.

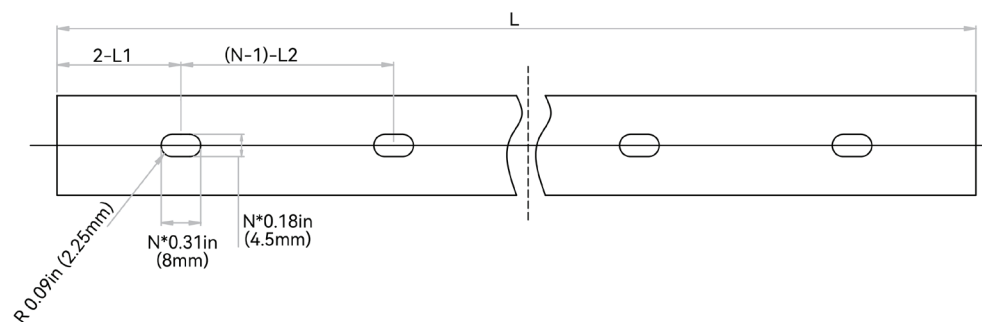
Mounting Profile Order Code:

P1	#	A
MOUNTING PROFILE TYPE	STANDARD LENGTH	PROFILE
P1 = Plastic Reinforced	2 = 1.38in (35mm) 3 = 19.68in (500mm) 5 = 39.37in (1000mm) 6 = 78.74in (2000mm) X = Custom	A = Vivid Basic

Dimensions + Hardware



Tolerance: $\pm 0.02\text{in}$ (0.5mm)



NOTES: 1. 2-L1 refers to two of symmetric L1 in each piece of profile.

2. (N-1)-L2 refers to (N minus one) of symmetric L2 in each piece of profile. "N" hereby stands for its corresponding "Hole Number" in the below table

ORDER CODE	STANDARD LENGTH	L1	L2	SLOTTED HOLE	HOLE #
P1-2-A	1.38in (35mm)	0.69in (17.5mm)	N/A	0.18*0.31in (4.5*8mm)	1
P1-3-A	19.68in (500mm)	1.97in (50mm)	7.87in (200mm)	0.18*0.31in (4.5*8mm)	3
P1-5-A	39.37in (1000mm)	3.93in (100mm)	7.87in (200mm)	0.18*0.31in (4.5*8mm)	5
P1-6-A	78.74in (2000mm)	3.93in (100mm)	7.87in (200mm)	0.18*0.31in (4.5*8mm)	10

STAINLESS STEEL PROFILE - CLIP



It uses grade 316 stainless steel with excellent property of deformation and rust resistance. The material makes it suitable for humid coastal surroundings and weak acid-base industrial environments that other mounting profiles can't accommodate. The structural design and material characteristics collectively ensure a tight clamping force. It's very convenient and reliable even for suspended installation in the curve shape.

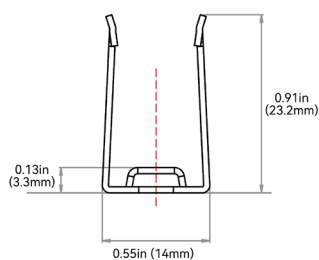
Please refer to install manual for proper installation practices.

Mounting Profile Order Code:

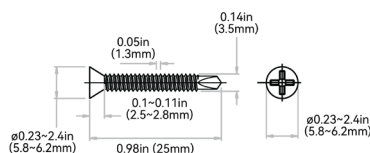
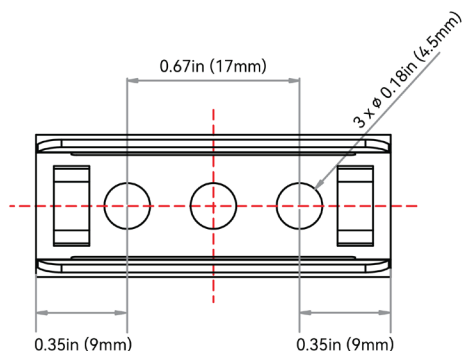
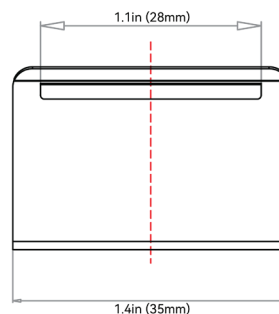
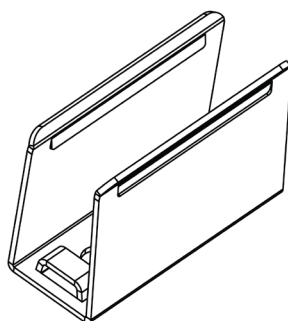
S1	#	A
MOUNTING PROFILE TYPE	STANDARD LENGTH	PROFILE
S1 = Stainless Steel Clip	2 = 1.38in (35mm) X = Custom	A = Vivid Basic



Dimensions + Hardware



Tolerance: $\pm 0.01\text{in}$ (0.3mm)



ORDER CODE	STANDARD LENGTH	SLOTTED HOLE	HOLE #
S1-2-A	1.38in (35mm)	ø0.18in (4.5mm)	3

PIVOT BRACKET

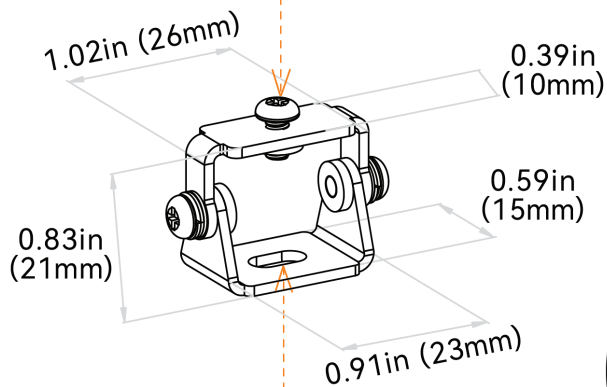
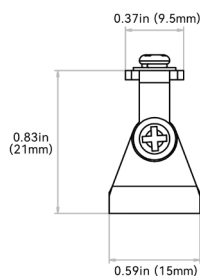
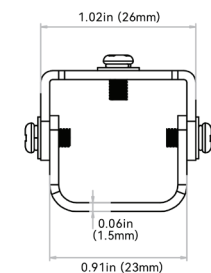
Applicable to all mounting profiles.



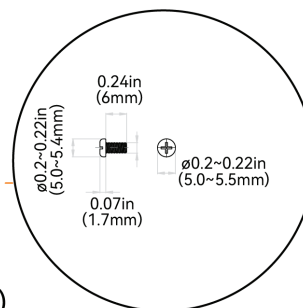
Mounting Accessory Order Code:

MA1	A
MOUNTING ACCESSORY TYPE	PROFILE
MA1 = Pivot Bracket	A = Vivid Basic

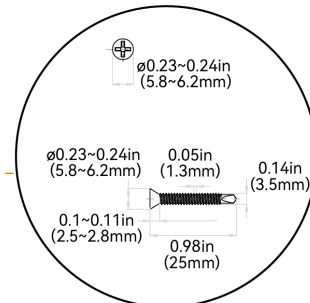
Dimensions + Hardware



Screw: PM 3*6



Screw: KA 3.5*25



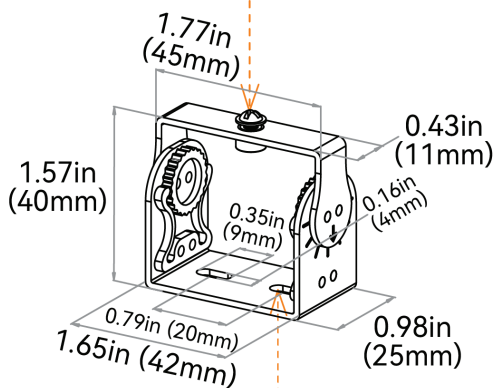
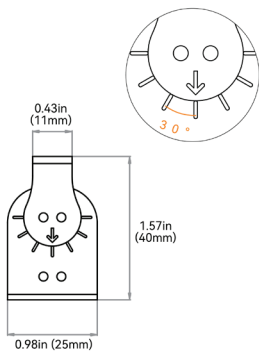
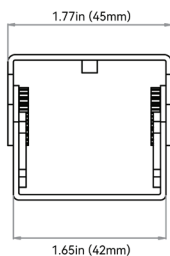
ROTARY BRACKET

Applicable to all mounting profiles.

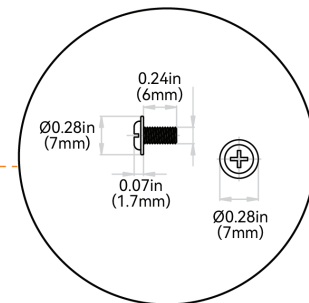
Mounting Accessory Order Code:

MA2	A
MOUNTING ACCESSORY TYPE	PROFILE
MA2 = Rotary Bracket	A = Vivid Basic

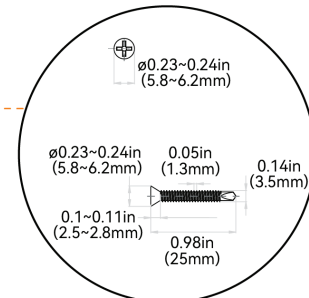
Dimensions + Hardware



Screw: PWM3*6 1 PC



Screw: KA 3.5*25 2PCS



SIDE BRACKET

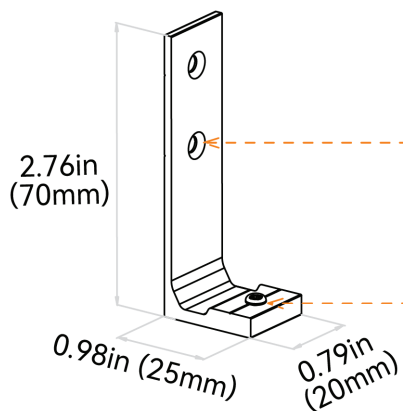
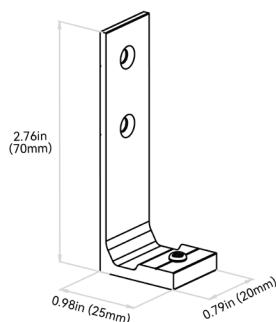
Applicable to all mounting profiles.



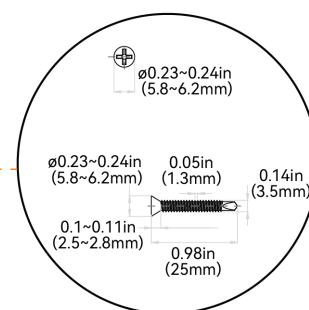
Mounting Accessory Order Code:

MA3	A
MOUNTING ACCESSORY TYPE	PROFILE
MA3 = Side Bracket	A = Vivid Basic

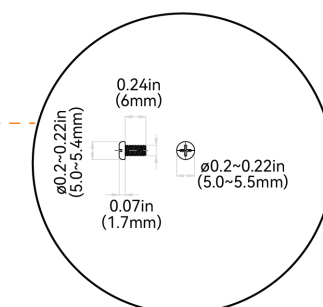
Dimensions + Hardware



Screw: KA 3.5*25 2PCS

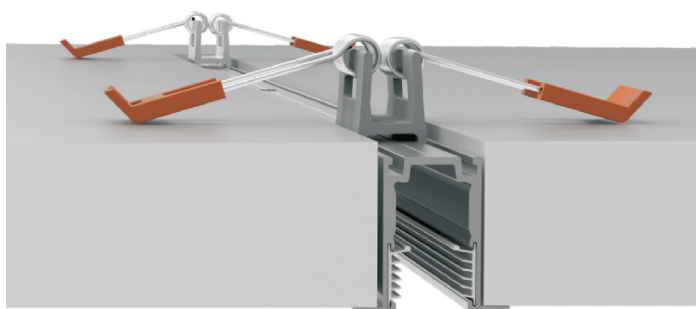


Screw: PWM3*6 1 PC



CEILING CLIP BRACKET

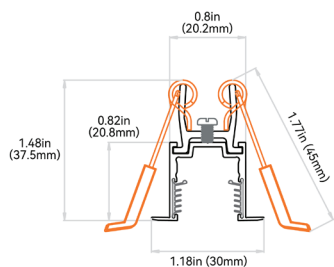
Applicable to Aluminum Profile – Recessed.



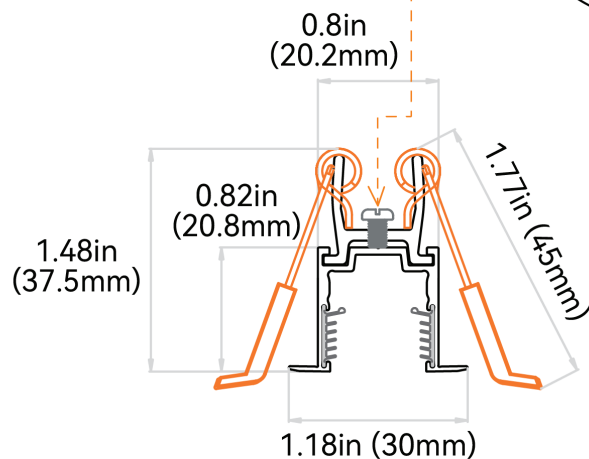
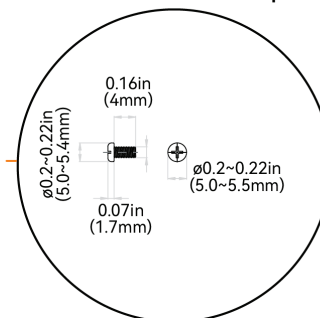
Mounting Accessory Order Code:

MA4	A
MOUNTING ACCESSORY TYPE	PROFILE
MA4 = Ceiling Clip	A = Vivid Basic

Dimensions + Hardware



Screw PM 3*4 1pc



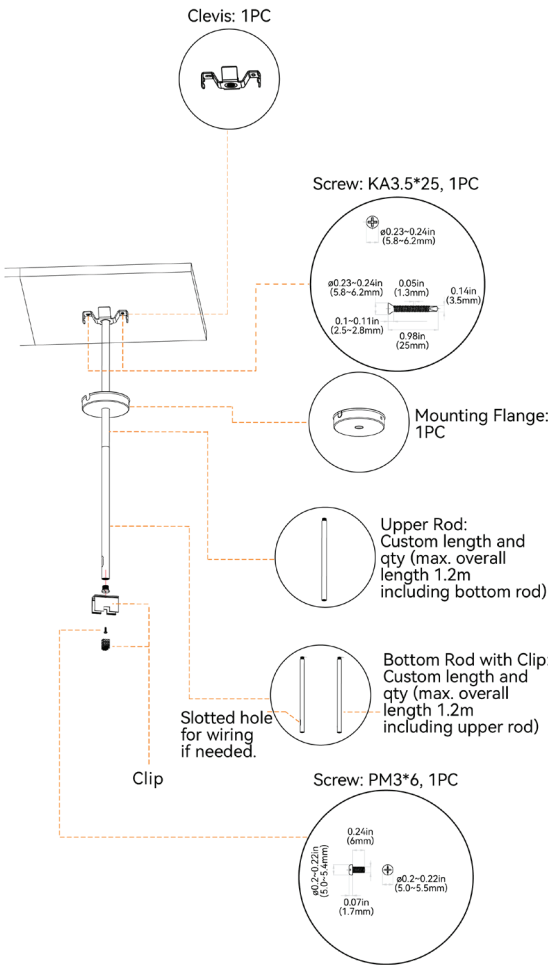
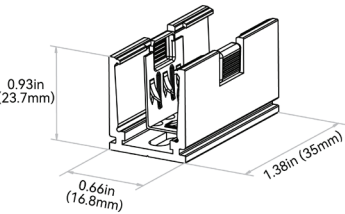
SUSPENDED MOUNTING CLIP + ROD



Mounting Accessory Order Code:

MA5	A
MOUNTING ACCESSORY TYPE	PROFILE
MA5 = Suspended Clip + Rod	A = Vivid Basic

Dimensions + Hardware



SUSPENDED WIRE



Applicable to Aluminum Profile – Silicone Grip.

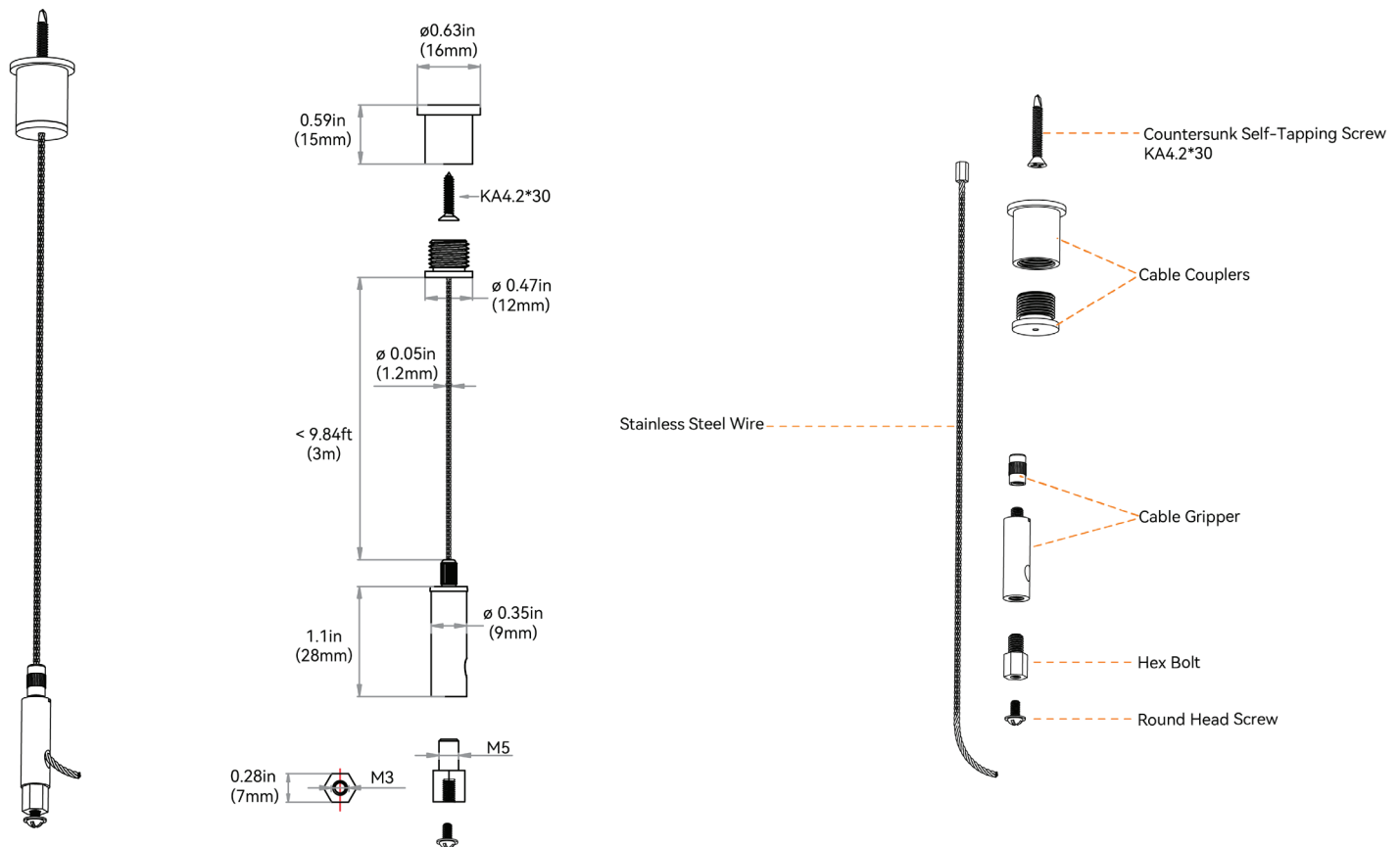
2 kits of stainless steel wires/39.37in (1000mm) of Aluminum Profile – Silicone Grip.

3 kits of stainless steel wires/78.74in (2000mm) of Aluminum Profile – Silicone Grip.

Mounting Accessory Order Code:

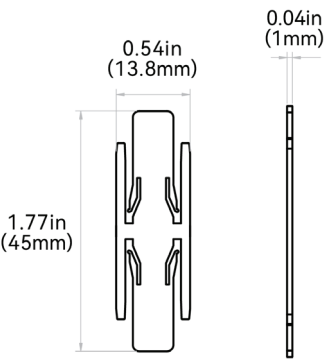
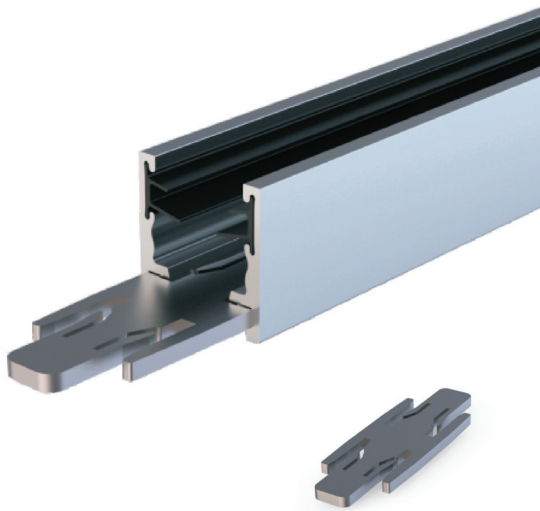
MA6	A
MOUNTING ACCESSORY TYPE	PROFILE
MA6 = Suspended Wire Kit	A = Vivid Basic

Dimensions + Hardware



ALIGNMENT BRACKET - ALUMINUM BASIC

Applicable to Aluminum Profile - Basic.

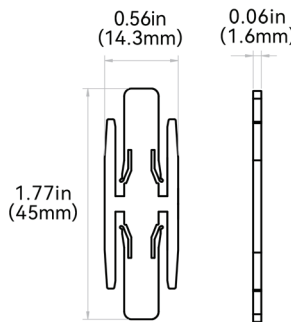
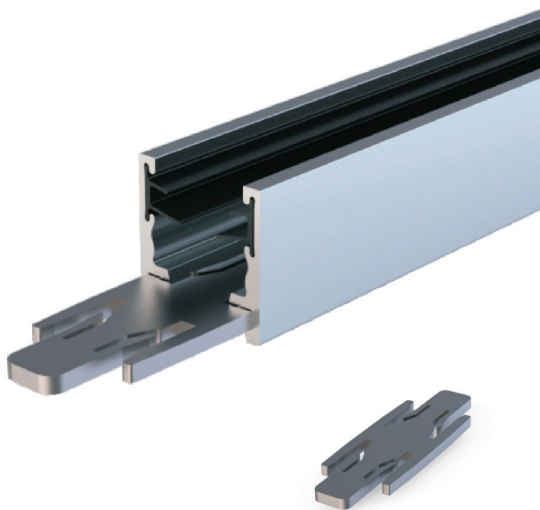


Mounting Accessory Order Code:

MA7	A
MOUNTING ACCESSORY TYPE	PROFILE
MA7 = Alignment Bracket - Aluminum Basic	A = Vivid Basic

ALIGNMENT BRACKET - ALUMINUM SILICONE GRIP

Applicable to Aluminum Profile - Silicone Grip.



Mounting Accessory Order Code:

MA8	A
MOUNTING ACCESSORY TYPE	PROFILE
MA8 = Alignment Bracket - Aluminum Silicone Grip	A = Vivid Basic

RECOMMENDED FOR OFF THE SHELF PROJECTS

Power Supply: GLLS



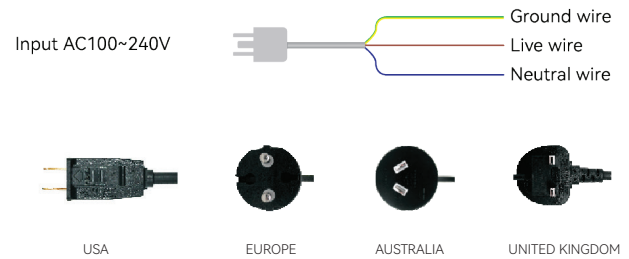
COMPATIBILITY



We can design and build almost any custom integration with our Vivid Basic Fixtures. Please visit [GLLS.com](https://www.glls.com) to schedule a consultation with an Account Manager.

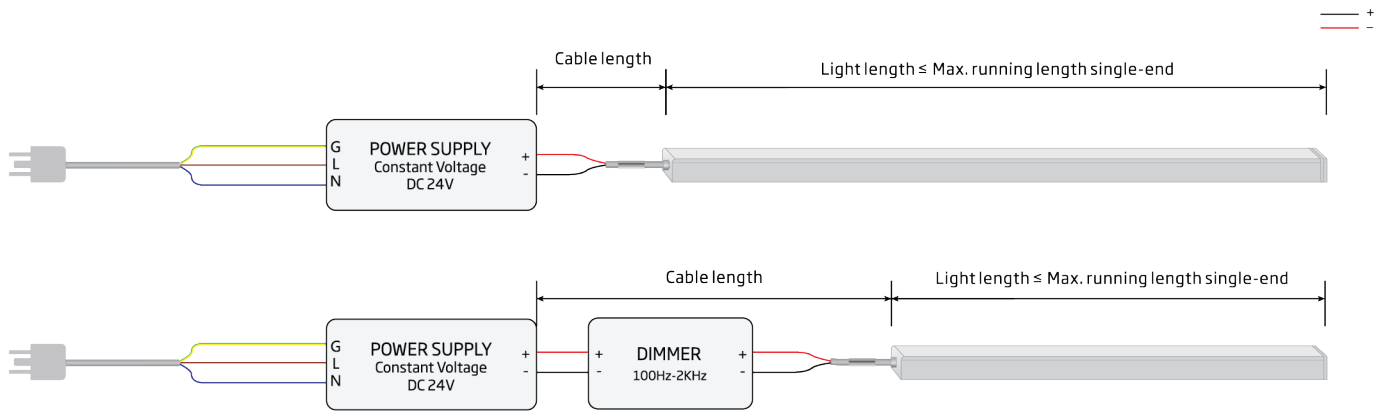
VIVID BASIC

1. Please use a constant voltage power supply with corresponding output voltage, and rated wattage of the power supply shall be 25% more than the actual power consumption of light to increase its life expectancy;
2. This wiring diagram is using the mains of AC230V with brown and blue wires as an example, and please connect with the corresponding live and neutral wires for other mains electricity; and
3. Dimming frequency ranges from 100Hz to 2000Hz, and 500Hz is recommended.



4. Types of standard plugs available from factory if exit and plug is selected in connectors.

WIRING – STATIC – SINGLE



Light Length

The length of the longest single light in parallel connection or sum of lights in series connection.

Cable Length

The length of an electrical cable between power output end and light input end, and the cables for serial interconnection are inclusive.

How To Minimize Voltage Drop

1. Please ensure the cable length is not more than the table “Max. Cable Length” according to the half of light length and its wire gauge.
2. Please ensure the light length is less than the table “Max. Running Light Length 1 Connector”.

Max Running Light Length 1 Connector

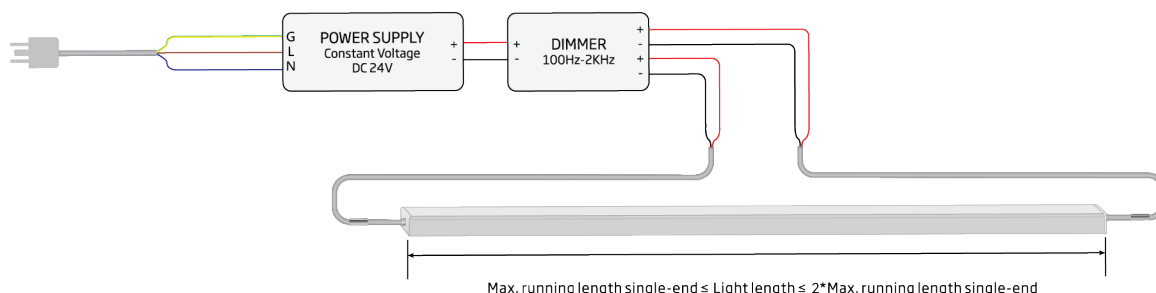
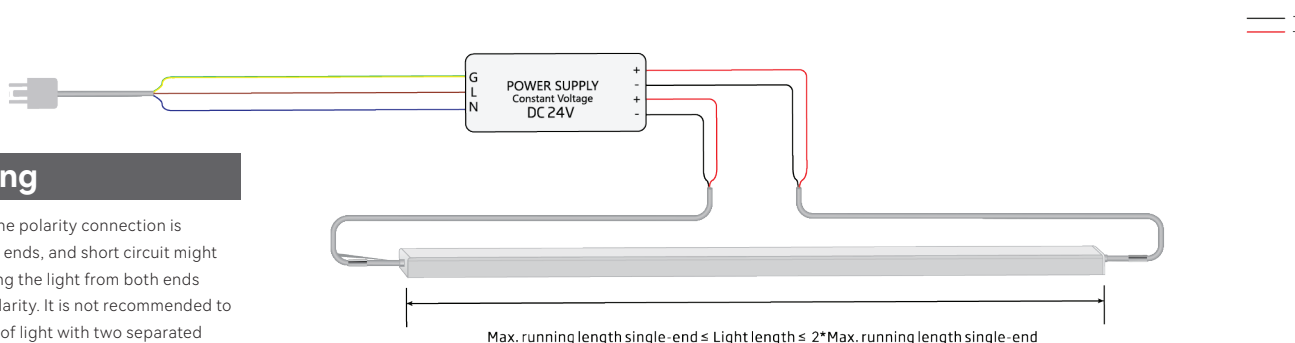
CONNECTOR TYPES	SWIVEL	SNAP	PVC SEAMLESS	PVC SUBMERSIBLE
Wire gauge	22AWG*2	18AWG*2	18AWG*2	18AWG*2
Power 1.06W/ft (3.5W/m)	32.8ft (10m)	65.6ft (20m)	65.6ft (20m)	65.6ft (20m)
Power 1.37W/ft (4.5W/m)	32.8ft (10m)	49.2ft (15m)	49.2ft (15m)	49.2ft (15m)

Note:

1. Above conclusion is based on voltage drop testing result of the light with 0.98ft (0.3m) cable only.
2. The maximum running length is based on a static light in full load.
3. Above running length is only the light length excluding lengths of connectors.
4. The delivered length might be subject to the maximum packing length.

WIRING – STATIC – DOUBLE

The following wiring diagram with 2 connectors to run length that is longer than max. running length for 1 connector but less than twice the value.



Light Length

The length of the longest single light in parallel connection or sum of lights in series connection.

Cable Length

The length of an electrical cable between power output end and light input end, and the cables for serial interconnection are inclusive.

How To Minimize Voltage Drop

1. It is optimal to position the power supply in the middle of a single light or multiple lines in daisy chain to keep the equivalent cable length on both ends for 2 connectors.
2. Please ensure the cable length is not more than the table “Max. Cable Length” according to the half of light length and its wire gauge.
3. Please ensure the light length is less than the table “Max. Running Light Length 2 Connectors”.

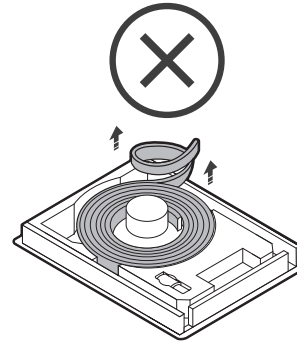
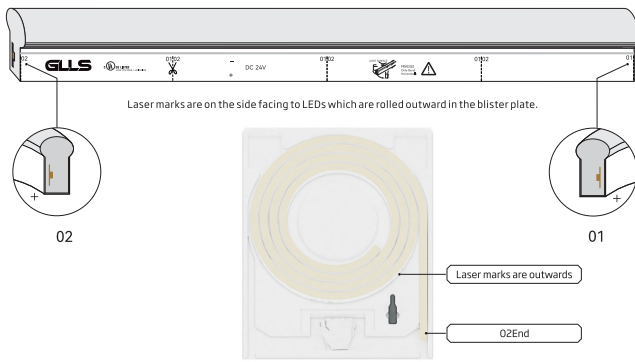
Max Running Light Length 2 Connectors

CONNECTOR TYPES	SWIVEL	SNAP	PVC SEAMLESS	PVC SUBMERSIBLE
Wire gauge	22AWG*2	18AWG*2	18AWG*2	18AWG*2
Power 1.06W/ft (3.5W/m)	65.6ft (20m)	131.2ft (40m)	131.2ft (40m)	131.2ft (40m)
Power 1.37W/ft (4.5W/m)	65.6ft (20m)	98.4ft (30m)	98.4ft (30m)	98.4ft (30m)

Note:

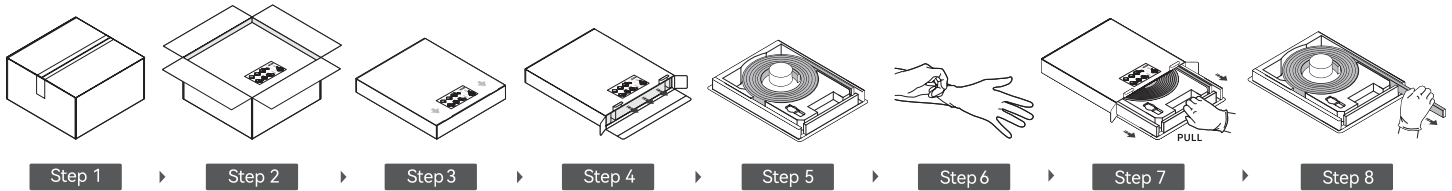
1. Above conclusion is based on voltage drop testing result of the light with 0.98ft (0.3m) cable only.
2. The maximum running length is based on a static light in full load.
3. Above running length is only the light length excluding lengths of connectors.
4. The delivered length might be subject to the maximum packing length.

STANDARD FIXTURE PACKAGING



NOTICE

Unpacking



Package Details



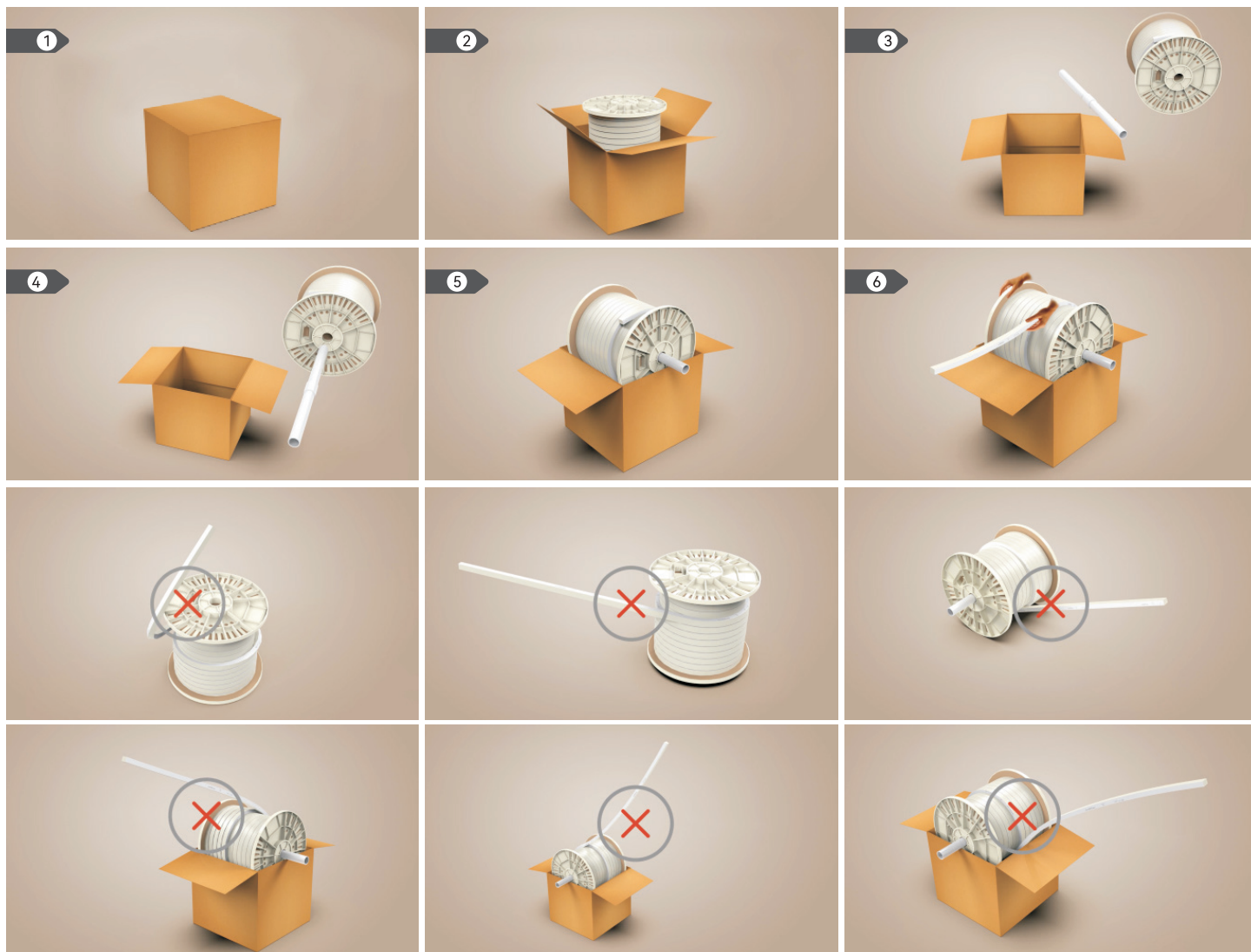
CABLE ENTRY	LIGHT FIXTURE LENGTH/BOX	WHITE BOX QTY/PACKAGE	PACKAGE DIMENSIONS	WEIGHT OF PACKAGE
END/SIDE FEED	16.40ft (5m)	5	20.3*15.8*10.8in (51.5*40*27.5cm)	32.1lbs (14.56kg)
	16.40ft (5m)	1	20.6*16.2*2.5in (52.2*41.2*6.3cm)	7.1lbs (3.22kg)
	32.81ft (10m)	5	25*20.47*10.8in (63.5*52*27.5cm)	60.5lbs (27.43kg)
	32.81ft (10m)	1	25.3*20.9*2.5in (64.2*53.2*6.3cm)	13lbs (5.90kg)
	32.81ft (10m)	3	25*20.47*6.89in (63.5*52*17.5cm)	37.3lbs (16.93kg)
	65.62ft (20m)	2	31.7*27.2*4.92in (80.5*69*12.5cm)	48.3lbs (21.91kg)
	65.62ft (20m)	1	31.9*27.6*2.5in (81.2*70.2*6.3cm)	24.6lbs (11.18kg)
	65.62ft (20m)	1	20.6*16.2*2.9in (52.2*41.2*7.3cm)	7.3lbs (3.32kg)
BOTTOM FEED	16.40ft (5m)	5	20.3*15.8*12.8in (51.5*40*32.5cm)	32.6lbs (14.80kg)
	16.40ft (5m)	1	25.3*20.9*2.9in (64.2*53.2*7.3cm)	13.1lbs (5.92kg)
	32.81ft (10m)	3	25*20.47*8.07in (63.5*52*20.5cm)	37.8lbs (17.13kg)
	32.81ft (10m)	5	25*20.47*12.8in (63.5*52*32.5cm)	60.4lbs (27.40kg)
	65.62ft (20m)	1	31.9*27.6*2.9in (81.2*70.2*7.3cm)	24.8lbs (11.26kg)
	65.62ft (20m)	2	31.7*27.2*5.7in (80.5*69*14.5cm)	48.9lbs (22.17kg)
	32.81ft (10m)	1	25.3*20.9*3.3in (64.2*53.2*8.3cm)	13.3lbs (6.05kg)
	32.81ft (10m)	3	25*20.47*9.25in (63.5*52*23.5cm)	37.8lbs (17.12kg)
MIDDLE FEED	32.81ft (10m)	5	25*20.47*14.76in (63.5*52*37.5cm)	61.6lbs (27.93kg)
	≤ 16.40ft (5m)	5	20.3*15.8*10.8in (51.5*40*27.5cm)	32.1lbs (14.56kg)
	≤ 16.40ft (5m)	1	20.6*16.2*2.5in (52.2*41.2*6.3cm)	7.1lbs (3.22kg)
	16.40ft <L≤26.25ft (5m<L≤8m)	5	25*20.47*10.8in (63.5*52*27.5cm)	37.3lbs (16.93kg)
	16.40ft <L≤26.25ft (5m<L≤8m)	1	25.3*20.9*2.5in (64.2*53.2*6.3cm)	8.4lbs (3.80kg)
	16.40ft <L≤26.25ft (5m<L≤8m)	3	25*20.47*6.89in (63.5*52*17.5cm)	23.4lbs (10.63kg)
	26.25ft <L≤39.37ft (8m<L≤12m)	5	25*20.47*10.8in (63.5*52*27.5cm)	60.5lbs (27.43kg)
	26.25ft <L≤39.37ft (8m<L≤12m)	3	25*20.47*6.89in (63.5*52*17.5cm)	37.3lbs (16.93kg)
	39.37ft <L≤65.62ft (12m<L≤20m)	1	35.4*34.1*2.9in (90*86.5*7.5cm)	19.7lbs (8.95kg)

Note:

1. Min. Volume of package will be based on the actual order.
2. Packing details are subject to change, please refer to the final packing list of each order.
3. Above values base on PVC Seamless & Submersible Connectors.

REEL FIXTURE PACKAGING

Unpacking



Package Details



CABLE ENTRY	LIGHT FIXTURE LENGTH/REEL	REEL QTY/PACKAGE	PACKAGE DIMENSIONS	WEIGHT OF PACKAGE
END / SIDE / BOTTOM FEED	32.81ft (10m)	1	13.4*13.4*4.7in (34*34*12cm)	10.2lbs (4.64kg)
	65.62ft (20m)	1	13.4*13.4*9.4in (34*34*24cm)	20.2lbs (9.17kg)
	114.8~164ft (35~50m)	1	13.4*13.4*9.4in (34*34*24cm)	39.1lbs (17.74kg)

Note:

1. Min. Volume of package will be based on the actual order.
2. Packing details are subject to change, please refer to the final packing list of each order.
3. Above values base on PVC Seamless & Submersible Connectors.

MOUNTING PROFILE PACKAGING

TYPE	PROFILE LENGTH	CARTON DIMENSION	QTY (PCS)	WEIGHT OF PACKAGE
ALUMINUM - BASIC	1.38in (35mm)	11.4*8.7*5.7in (29.0*22.0*14.5cm)	980	12.1lbs (5.5kg)
	19.68in (500mm)	21.7*4.7*4.7in (55.0*12.0*12.0cm)	32	7.7lbs (3.5kg)
	39.37in (1000mm)	40.9*10.4*5.2in (104.0*26.5*13.2cm)	80	28.7lbs (13kg)
	78.74in (2000mm)	81.1*7.5*4.7in (206.0*19.0*12.0cm)	50	37lbs (16.8kg)
ALUMINUM - RECESSED	1.38in (35mm)	11.4*8.7*5.7in (29.0*22.0*14.5cm)	630	9.9lbs (4.5kg)
	19.68in (500mm)	21.7*4.7*4.7in (55.0*12.0*12.0cm)	20	6.6lbs (3kg)
	39.37in (1000mm)	40.9*10.4*5.2in (104.0*26.5*13.2cm)	48	22lbs (10kg)
	78.74in (2000mm)	81.1*7.5*4.7in (206.0*19.0*12.0cm)	36	32lbs (14.5kg)
ALUMINUM - SILICONE GRIP	0.79in (20mm)	11.4*8.7*5.7in (29.0*22.0*14.5cm)	1200	14.6lbs (6.6kg)
	19.68in (500mm)	21.7*4.7*4.7in (55.0*12.0*12.0cm)	28	19.4lbs (8.8kg)
	39.37in (1000mm)	40.9*10.4*5.2in (104.0*26.5*13.2cm)	64	39.7lbs (18kg)
	78.74in (2000mm)	81.1*7.5*4.7in (206.0*19.0*12.0cm)	44	53.6lbs (24.3kg)
ALUMINUM - RECESSED - SILICONE GRIP	0.79in (20mm)	11.4*8.7*5.7in (29.0*22.0*14.5cm)	728	9.9lbs (4.5kg)
	19.68in (500mm)	21.7*4.7*4.7in (55.0*12.0*12.0cm)	12	4.4lbs (2kg)
	39.37in (1000mm)	40.9*10.4*5.2in (104.0*26.5*13.2cm)	40	26.5lbs (12kg)
	78.74in (2000mm)	81.1*7.5*4.7in (206.0*19.0*12.0cm)	21	27.6lbs (12.5kg)
ALUMINUM FLEXIBLE	19.68in (500mm)	21.7*4.7*4.7in (55.0*12.0*12.0cm)	28	7.7lbs (3.5kg)
	39.37in (1000mm)	40.9*10.4*5.2in (104.0*26.5*13.2cm)	64	34lbs (15.4kg)

GILLS

CERTIFICATIONS + TESTING

Certifications

TESTING ORGANIZATION + STANDARD	CERTIFICATE SERIAL NUMBER	REPORT REFERENCE
UL 2108 Class 2	E347880	E347880-20130503

Tested to UL & CSA by Underwriters Laboratory for use in USA and Canada, complies with California Title 24 Requirements, Lighting Facts. Exceeds ANSI C78.377A, CE & RoHS Compliant.

Fixture Testing

TEST	RESULTS
OPTICAL TESTING	
Spectrum Analysis	IES LM 79 (Lumen, CCT, CRI, XY, SDCM, Wavelength)
Photometric Distribution	IES LM 73 (Lumen intensity distribution & Lux Diagram)
Lumen Maintenance & Lifetime	IES LM 84 & IES TM28
TEMPERATURE TESTING	
Normal Temperature Test	UL1598 & UL2388 & IEC60598-1 & IEC60598-2-21
Abnormal Operation Test	UL1598 & UL2388 & IEC60598-1 & IEC60598-2-21
DURABILITY TESTING	
Bending Test	Manufacturer-defined, 500 cycles
Swing Test	UL2388, >750 cycles
Tensile Test	Manufacturer-defined, > The weight of light in max. connection length 2 connectors
Twist Test	Max connection length 2 connectors Manufacturer-defined, >200 cycles
Ball Impact	UL1598 & UL2388 & IEC60598-1 & IEC60598-2-21
IK	IEC62262
ENVIRONMENTAL TESTING	
Chlorinated Water Immersion	BG9667, PH6.8-7.6, Free chlorine 0.3-0.6mg/L
Salt Water Immersion	IEC60598-1, Salinity 4%
Salt Spray Test	IEC68-2-11
Outdoor Exposure	Manufacturer-defined
Flame Resistance	UL94
UV Exposure	ASTMG 154, ISO 4892-3, UVA @ 340nm
IPX5, IPX6, IPX7, IPX8	IEC60529 & EN 60598
Temperature Shock	Manufacturer-defined, -40°C - 60°C (typical temperature range)
Constant Temperature	Manufacturer-defined

ANSI Standard

NOMINAL CCT	TARGET CCT + TOLERANCE(K)	TARET D _{uv}	D _{uv} TOLERANCE RANGE
2200K	2238±102	0.0000	Tx: CCT OF THE SOURCE FOR Tx<2870K 0.000±0.0060 FOR Tx≥2870K D _{uv} (Tx)±0.0060 WHERE D _{uv} (Tx)=57700 x (1/Tx)2 -44.6 x (1/Tx) +0.00854
2500K	2460±120	0.0000	
2700K	2725±145	0.0000	
3000K	3045±175	0.0001	
3500K	3465±245	0.0005	
4000K	3985±275	0.0010	
4500K	4503±243	0.0015	
5000K	5029±283	0.0020	
5700K	5667±355	0.0025	
6500K	6532±510	0.0031	
Flexible CCT (2200-6500K)	T _F ^{1)±ΔT²⁾}	D _{uv} T _F ³⁾	

Remark:

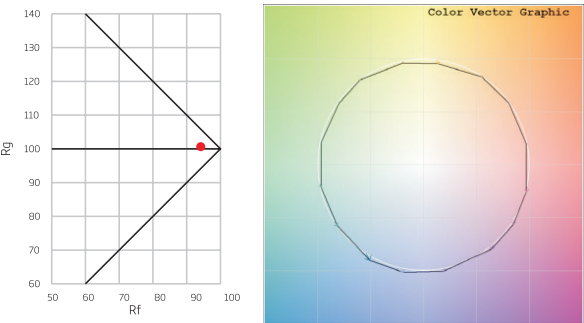
1) T_F is chosen to be at 100K steps (2300, 2400,, 6400K), excluding the ten nominal CCTs listed in Table 1.

2) ΔT=1.1900x10⁵xT³-
1.5434x10⁴xT²+0.7168xT-902.55

3) Same as in the D_{uv} Tolerance Range

PVC 24V DC - Static

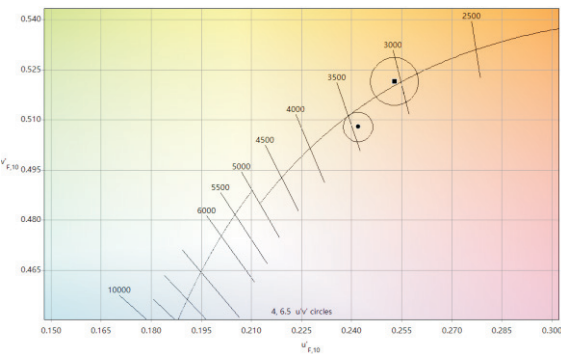
TM-30



IES TM-30-15 is a new system of several related measures and graphics that can be used together to effectively evaluate and communicate a light source's color rendering properties. The development of the method involved synthesizing multiple related research efforts and combining ideas into a single, cohesive system of objective information that can be used to aid decision-making processes, such as finding the preferred light source for a given application or evaluating the tradeoffs between efficacy and color rendering.

MEASURE	ABBREVIATION	DESCRIPTION
Fidelity Index	Rf	Analogous to CIE Ra (CRI). Characterizes the average color shift of the 99 CES to characterize the overall level of similarity between the test source and reference illuminant. Values range from 0 to 100.
Gamut Index	Rg	Compares the area enclosed by the average chromaticity coordinates in each of 16 hue bins to characterize the average saturation level of the test source compared to the reference illuminate. A neutral score is 100, with values greater than 100 indicating an increase in saturation and values less than 100 indicating a decrease in saturation. The range in values grows as fidelity decreases.

Color Matching



Color temperature value stated on all GLLS's documents refers to finished products. LED's color temperature would be shifted by the light diffuser made of PVC or silicone material. GLLS calibrates color temperature and color coordinate of tailor-made LEDs with proprietary color-matching algorithms to produce a precise color temperature and color coordinate close to black body locus for finished products. All LEDs would be strictly tested and tightly controlled to ensure finished products can meet ANSI standard.

GILLS