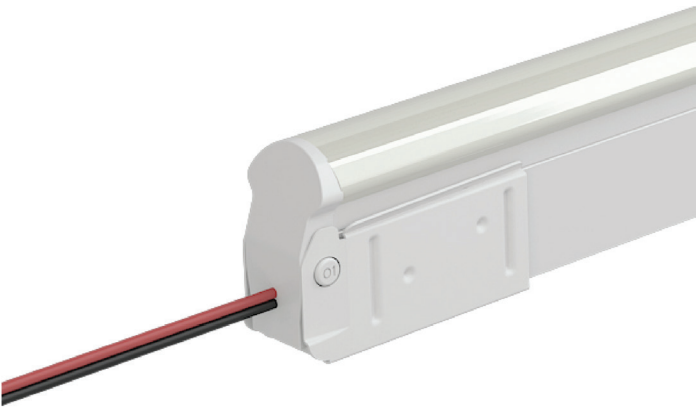


SWIVEL CONNECTOR: DIY



IP20, Omni-directional Cable, Tool-less, Mini Size. Recommended for indoor dry environments and for on-site length adjustments. Under the simple and convenient design concept, we developed our swivel connector, which is superb for indoor concealed installation in narrow space thanks to its mini size and omni-directional cable. Navigated by user manual, tool-free and quick assembly can be realized, and Press & Seal design enables the functions of energization and dust-proof rapidly. DIY or Custom Factory Assembly.



- NOTES:
- 1. Connector Tolerance  $\pm 0.02\text{in}$  (0.5mm)
  - 2. We recommend leaving 2.36in (60mm) of connector wire in its natural state. Bending too close to the fixture can result in damage.
  - 3. Ensure Max. Cable Lengths are followed according to wire gage to avoid voltage drop.

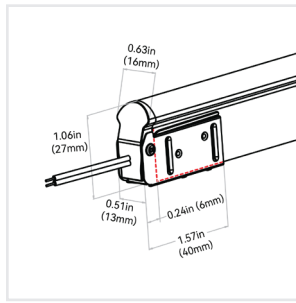
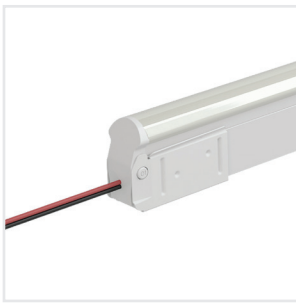
Connector Order Code:

Will be displayed: Connector Order Code (01 exit) + Fixture Order Code + Connector Order Code (02 exit)

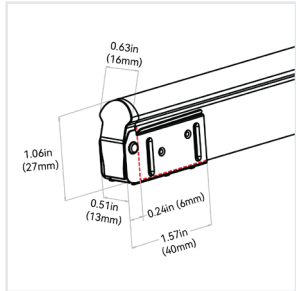
6	A	#
CONNECTOR TYPE	ORIENTATION + TYPE	LEAD WIRE LENGTH
6 = Swivel X = Custom	A = End Exit I = End Cap X = Custom	1 = 0.98ft (0.3m) 2 = 3.28ft (1m) 8 = N/A X = Custom



## End Exit: 6-A-#

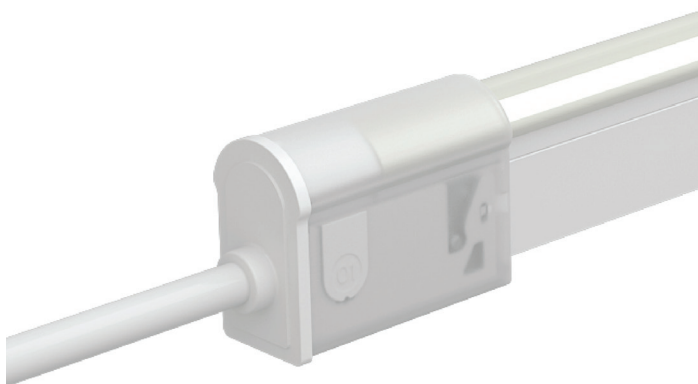


## End Cap: 6-I-8





## SNAP CONNECTOR: DIY



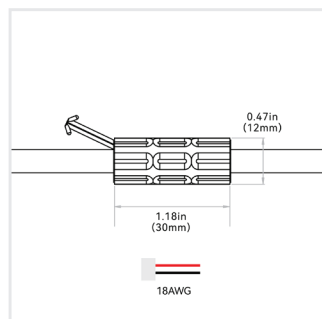
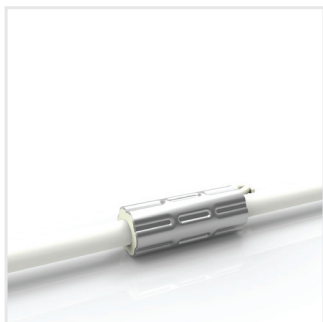
IP67, tool-less; good solution for protection from water ingress; larger connector & anti-wicking ferrule. Recommended for wet environments and on-site length adjustments. To seal the end of light and ensure the waterproof in case of any cutting or extension on site, Insulfit technology prevents the water or vapor ingress from the end of the light. DryWire technology applied on the cable eliminates the capillary phenomenon through wires, which secured the long-term reliability in any wading environments. DIY or Custom Factory Assembly.



### NOTES:

1. Connector Tolerance  $\pm 0.02$ in (0.5mm)
2. We recommend leaving 2.36in (60mm) of connector wire in its natural state. Bending too close to the fixture can result in damage.
3. Ensure Max. Cable Lengths are followed according to wire gage to avoid voltage drop.

## Anti-wicking Ferrule:



### NOTES:

1. The anti-wicking ferrule is located at 4.53in (115mm) ( $\pm 0.39$ in [ $\pm 10$ mm]) tolerance) from the connector on the cable. For protection against water ingress.
2. The removal of anti-wicking ferrule will void the warranty if any water ingress caused by it.

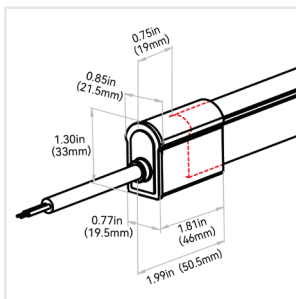
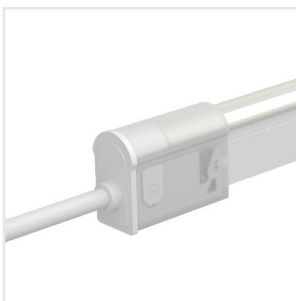
## Connector Order Code:

Will be displayed: Connector Order Code (01 exit) + Fixture Order Code + Connector Order Code (02 exit)

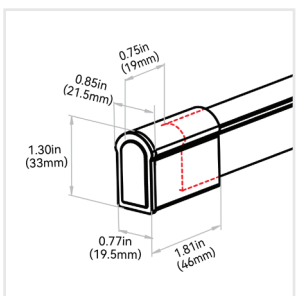
7	A	#
CONNECTOR TYPE	ORIENTATION + TYPE	LEAD WIRE LENGTH
7 = Snap X = Custom	A = End Exit E = End Jumper H = Power T-Feed I = End Cap V = Barrel Connector Male W = Barrel Connector Female X = Custom	1 = 0.98ft (0.3m) 2 = 3.28ft (1m) 3 = 9.84ft (3m) 4 = 16ft (5m) 5 = 32.81ft (10m) 6 = 49.21ft (15m) 7 = 65.62ft (20m) 8 = N/A X = Custom



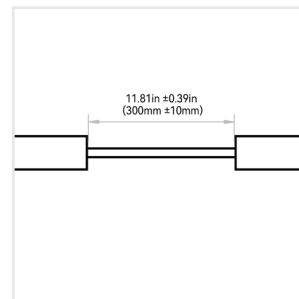
### End Exit: 7-A-#



### End Cap: 7-I-8

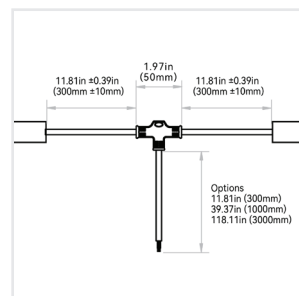


### End Jumper: 7-E-1



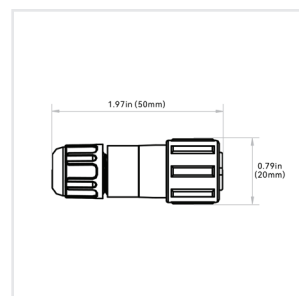
NOTE: Max. 4 Jumpers in 32.8ft (10m) Runs & 8 Jumpers in 65.6ft (20m).

### Power T-Feed: 7-H-#



NOTE: Max. 4 T-Feeds in 32.8ft (10m) Runs & 8 T-Feeds in 65.6ft (20m).

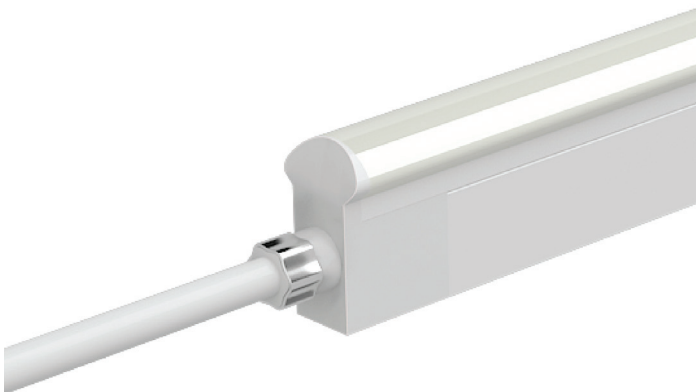
### Barrel Connectors - IP67: 7-(V or W)-#



NOTE: The tolerance is  $\pm 0.08$ in (2mm).



## PVC SEAMLESS CONNECTOR: CUSTOM



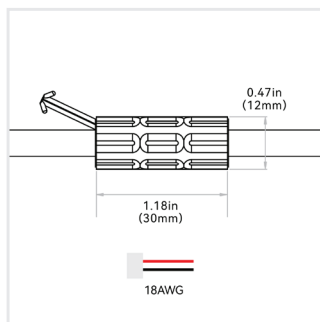
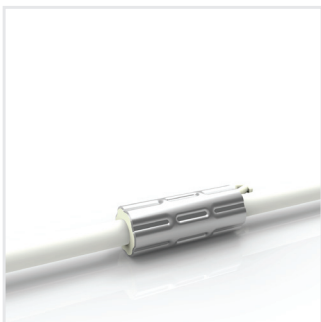
IP67; seamless; anti-wicking ferrule. Recommended for wet environments & for custom predetermined lengths. Adopting precision milling and special glue PVC injection molding workmanship, the transparent terminal of the connector allows the seamless effects spliced end by end. The copper ring protects the cable joint from the damage of excessively external force in the process of installation. DryWire technology applied on the cable eliminates the capillary phenomenon through wires, which secured the long-term reliability in outdoor or any wet environments. Light lengths can be customized on the basis of projects and pre-installation before the delivery eases the assembly trouble on site. Custom Factory Assembly.



## NOTES:

1. Connector Tolerance  $\pm 0.02$ in (0.5mm)
2. We recommend leaving 2.36in (60mm) of connector wire in its natural state. Bending too close to the fixture can result in damage.
3. Ensure Max. Cable Lengths are followed according to wire gage to avoid voltage drop.

## Anti-wicking Ferrule:



## NOTES:

1. The anti-wicking ferrule is located at 4.53in (115mm) ( $\pm 0.39$ in [ $\pm 10$ mm] tolerance) from the connector on the cable. For protection against water ingress.
2. The removal of anti-wicking ferrule will void the warranty if any water ingress caused by it.

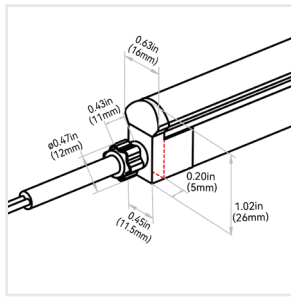
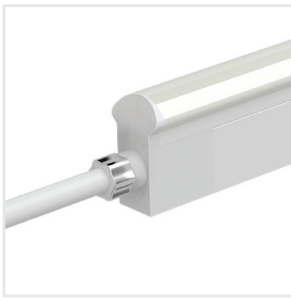
## Connector Order Code:

Will be displayed: Connector Order Code (01 exit) + Fixture Order Code + Connector Order Code (02 exit)

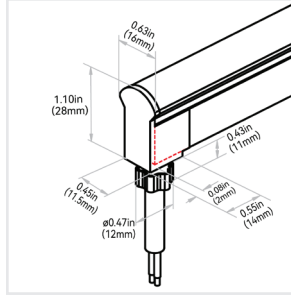
1	A	#
CONNECTOR TYPE	ORIENTATION + TYPE	LEAD WIRE LENGTH
1 = PVC Seamless X = Custom	A = End Exit B = Bottom Exit C = Side Left Exit D = Side Right Exit E = End Jumper G = Side Jumper H = Power T-Feed I = End Cap V = Barrel Connector Male W = Barrel Connector Female X = Custom	1 = 0.98ft (0.3m) 2 = 3.28ft (1m) 3 = 9.84ft (3m) 4 = 16ft (5m) 5 = 32.81ft (10m) 6 = 49.21ft (15m) 7 = 65.62ft (20m) 8 = N/A X = Custom



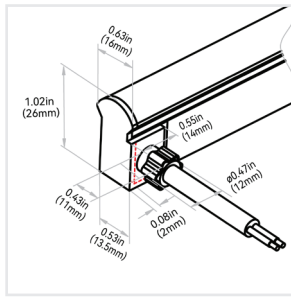
## End Exit: 1-A-#



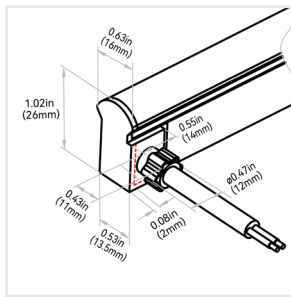
## Bottom Exit: 1-B-#



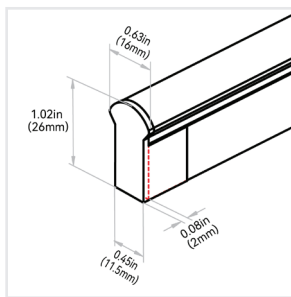
## Side Left Exit: 1-C-#



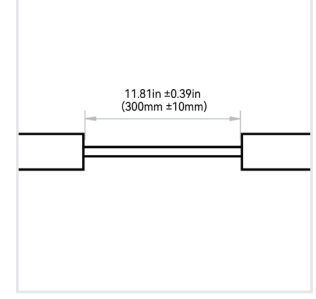
## Side Right Exit: 1-D-#



## End Cap: 1-I-8

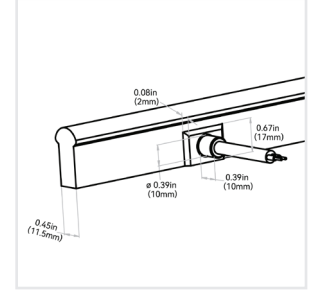


## End Jumper: 1-E-1

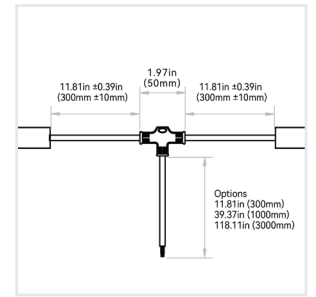


NOTE: Max. 4 Jumpers in 32.8ft (10m) Runs & 8 Jumpers in 65.6ft (20m).

## Side Jumper: 1-G-#

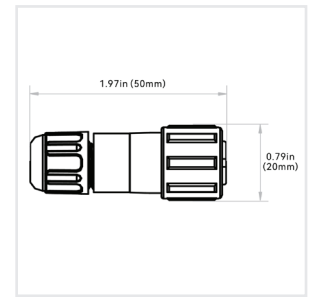


## Power T-Feed: 1-H-#



NOTE: Max. 4 T-Feeds in 32.8ft (10m) Runs & 8 T-Feeds in 65.6ft (20m).

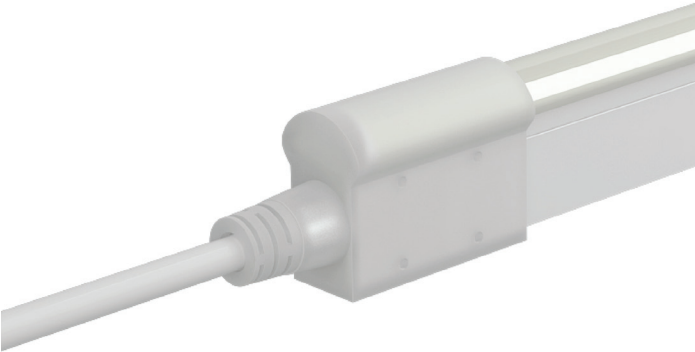
## Barrel Connectors - IP67: 1-(V or W)-#



NOTE: The tolerance is ±0.08in (2mm).



# SUBMERSIBLE CONNECTOR: CUSTOM

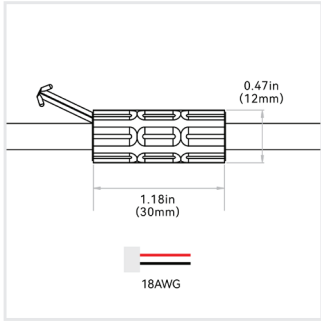
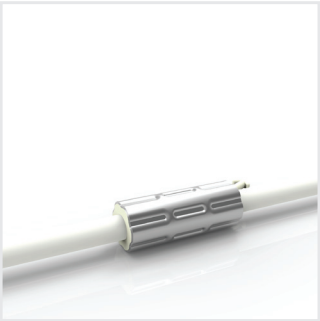


IP68 (Vivid Wave Mini IP65); extremely durable & anti-wicking ferrule. Recommended for; long-term submersed in wet environments up to the depth of 6.56ft (2m); high temperature and humidity environments; custom pre determined lengths and larger connector; harsh working conditions & increased handling forces during installation. Custom Factory Assembly.



- NOTES: 1. Connector Tolerance  $\pm 0.02\text{in}$  (0.5mm)  
2. We recommend leaving 2.36in (60mm) of connector wire in its natural state. Bending too close to the fixture can result in damage.  
3. Ensure Max. Cable Lengths are followed according to wire gage to avoid voltage drop.

## Anti-wicking Ferrule:



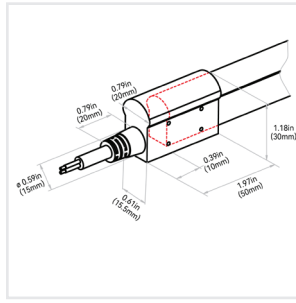
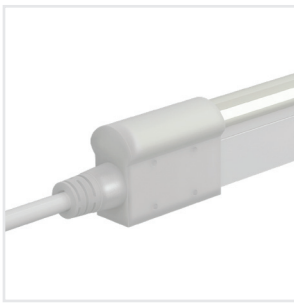
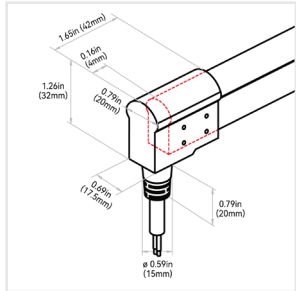
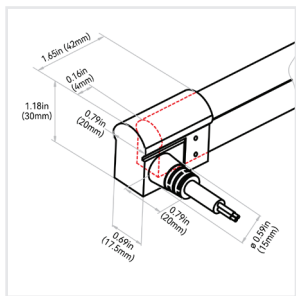
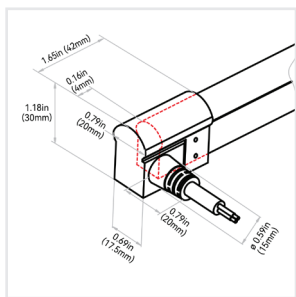
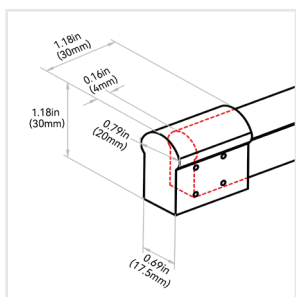
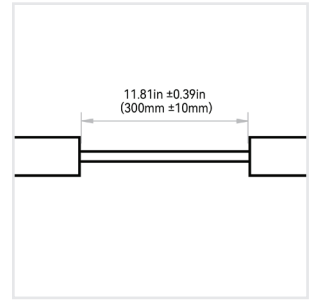
- NOTES: 1. The anti-wicking ferrule is located at 4.53in (115mm) ( $\pm 0.39\text{in}$  [ $\pm 10\text{mm}$ ] tolerance) from the connector on the cable. For protection against water ingress.  
2. For underwater application, do not immerse anti-wicking ferrule in the water. The removal of anti-wicking ferrule will void the warranty if any water ingress caused by it.

## Connector Order Code:

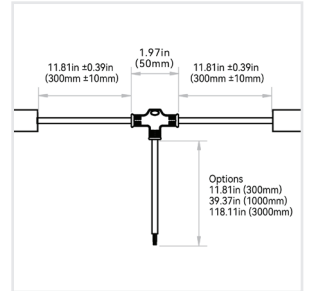
Will be displayed: Connector Order Code (01 exit) + Fixture Order Code + Connector Order Code (02 exit)

3	A	#
CONNECTOR TYPE	ORIENTATION + TYPE	CABLE LENGTH (LEAD WIRE)
3 = PVC Submersible	A = End Exit B = Bottom Exit C = Side Left Exit D = Side Right Exit E = End Jumper H = Power T-Feed I = End Cap V = Barrel Connector Male W = Barrel Connector Female X = Custom	1 = 0.98ft (0.3m) 2 = 3.28ft (1m) 3 = 9.84ft (3m) 4 = 16ft (5m) 5 = 32.81ft (10m) 6 = 49.21ft (15m) 7 = 65.62ft (20m) 8 = N/A X = Custom

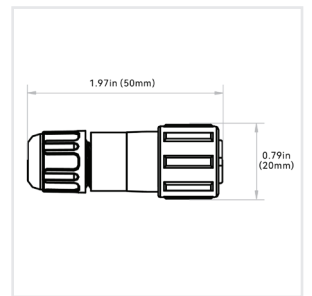


**End Exit: 3-A-#**

**Bottom Exit: 3-B-#**

**Side Left Exit: 3-C-#**

**Side Right Exit: 3-D-#**

**End Cap: 3-I-8**

**End Jumper: 3-E-1**


NOTE: Max. 4 Jumpers in 32.8ft (10m) Runs & 8 Jumpers in 65.6ft (20m).

**Power T-Feed: 3-H-#**


NOTE: Max. 4 T-Feeds in 32.8ft (10m) Runs & 8 T-Feeds in 65.6ft (20m).

**Barrel Connectors - IP67: 3-(V or W)-#**


NOTE: The tolerance is  $\pm 0.08$ in (2mm).