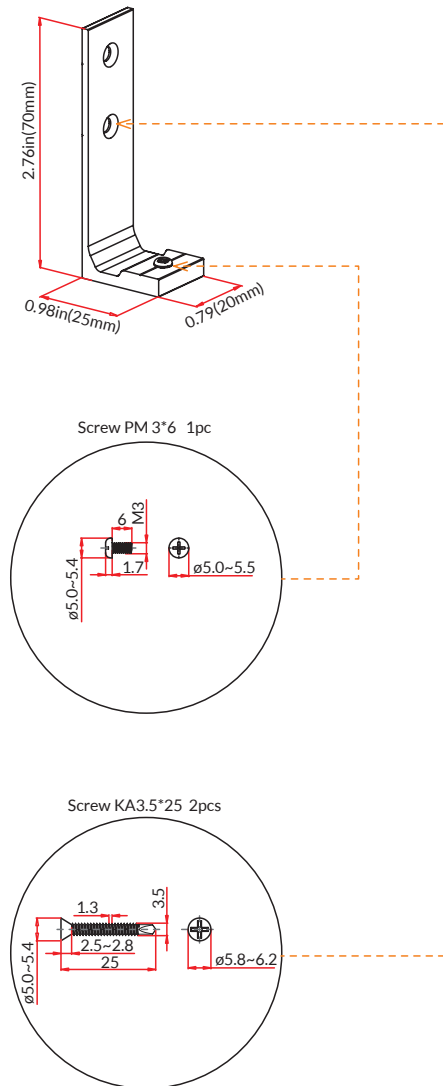
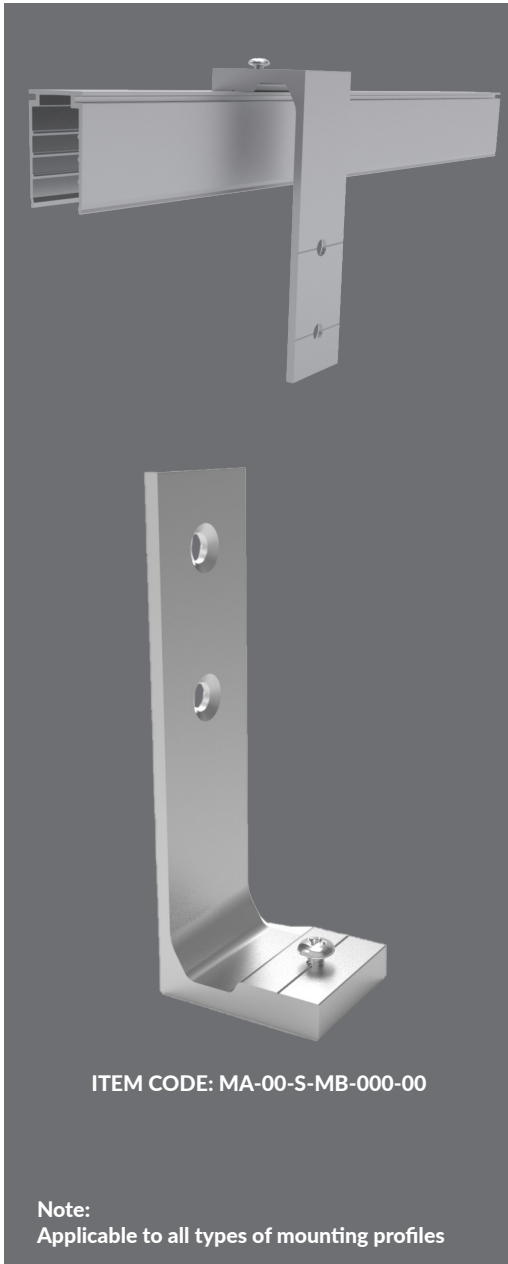


SIDE MOUNTING BRACKET

Version 1.0 | Specifications are subject to change without notice.



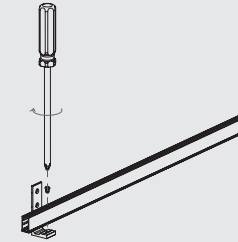
Installation Instructions

Step 1



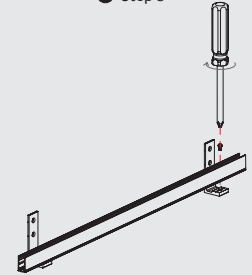
Remove the PM3*6 screw of side mounting bracket.

Step 2



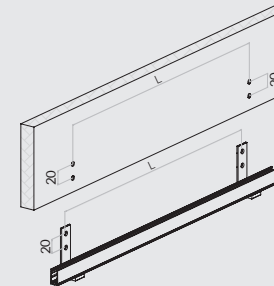
Fix side mounting bracket and mounting profile tightly by the screw.

Step 3



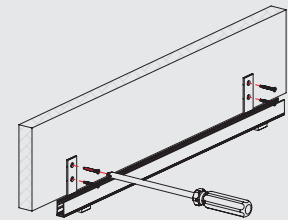
Repeat step 1 & step 2 for the remaining brackets and secure at least 2 locking points for each mounting profile, and the equal interval is more recommended.

Step 4



Mark the pilot holes on mounting surface accordingly.

Step 5



Fix the side mounting bracket by KA3.5*25 screws.

UNITED STATES

Pacific Business Center
1075 American Pacific Dr.,
Ste. A Henderson, NV 89074

CANADA

Suite 200, 264 Botsford Street,
Moncton, New Brunswick,
E1C 4X7, Canada

UNITED KINGDOM

Unit 21, The Old Rectory,
Northfleet, Gravesend,
DA11 8HN, UK

PHONE

+1-888-580-6366

DISCLAIMER

GLLS reserves the right to make any design changes for continuous improvement which will not affect the overall appearance or performance.

WEBSITES

www.glls.com
www.ledneonflex.com
www.aquaneon.com

PAGE

1

of 1